

Management, Governance and Financing



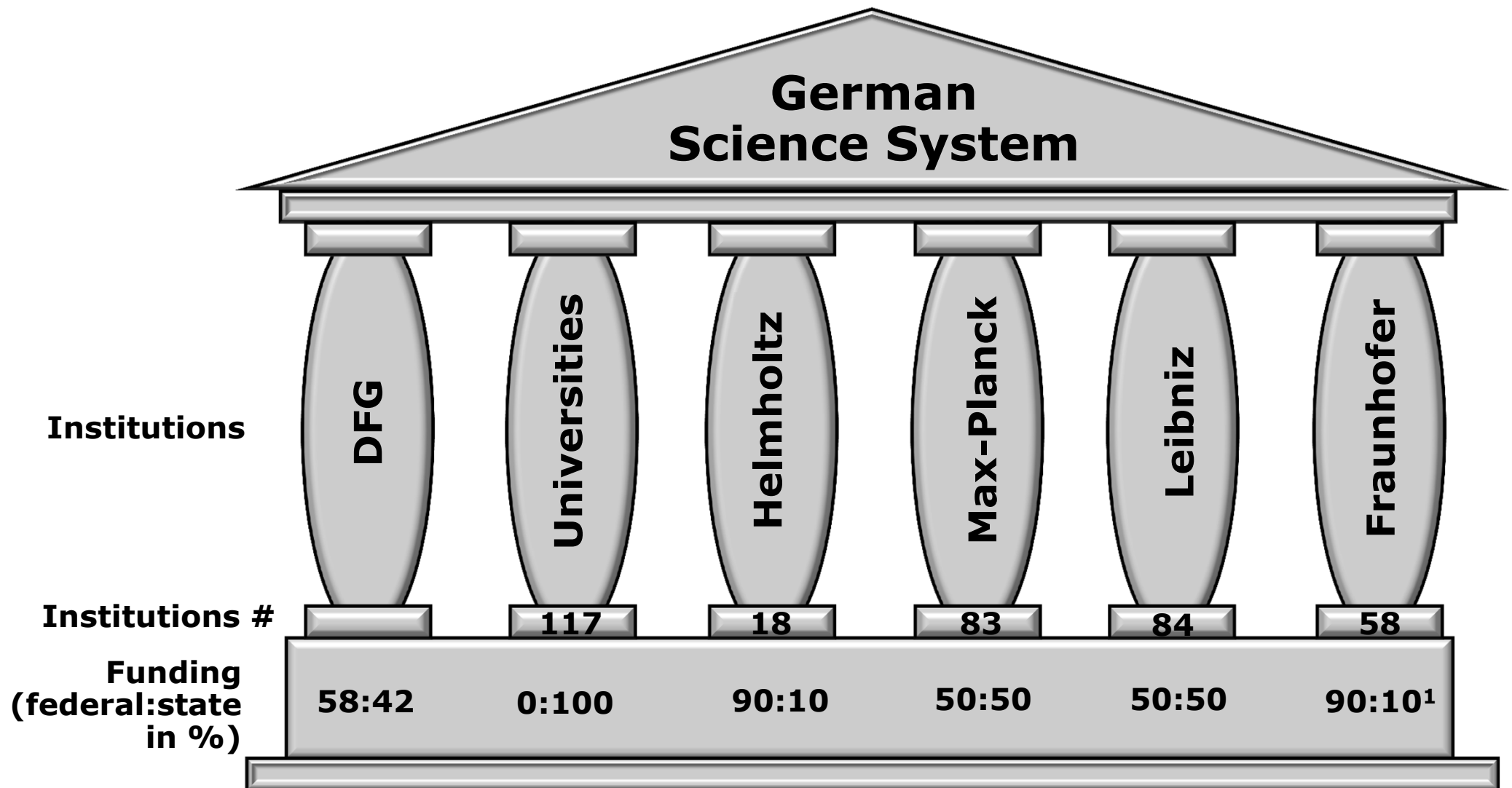
Hermann Franz

HELMHOLTZ
RESEARCH FOR GRAND CHALLENGES

RI Training workshop
Hamburg, 7 June 2018



Education and Research in Germany.



(1) Basic public funding only 30 %

- 18 National Research Centres
- 37150 employees: 15200 scientists, 6800 PhD stud., 1700 trainees

Research fields

Energy

Earth and Environment

Health

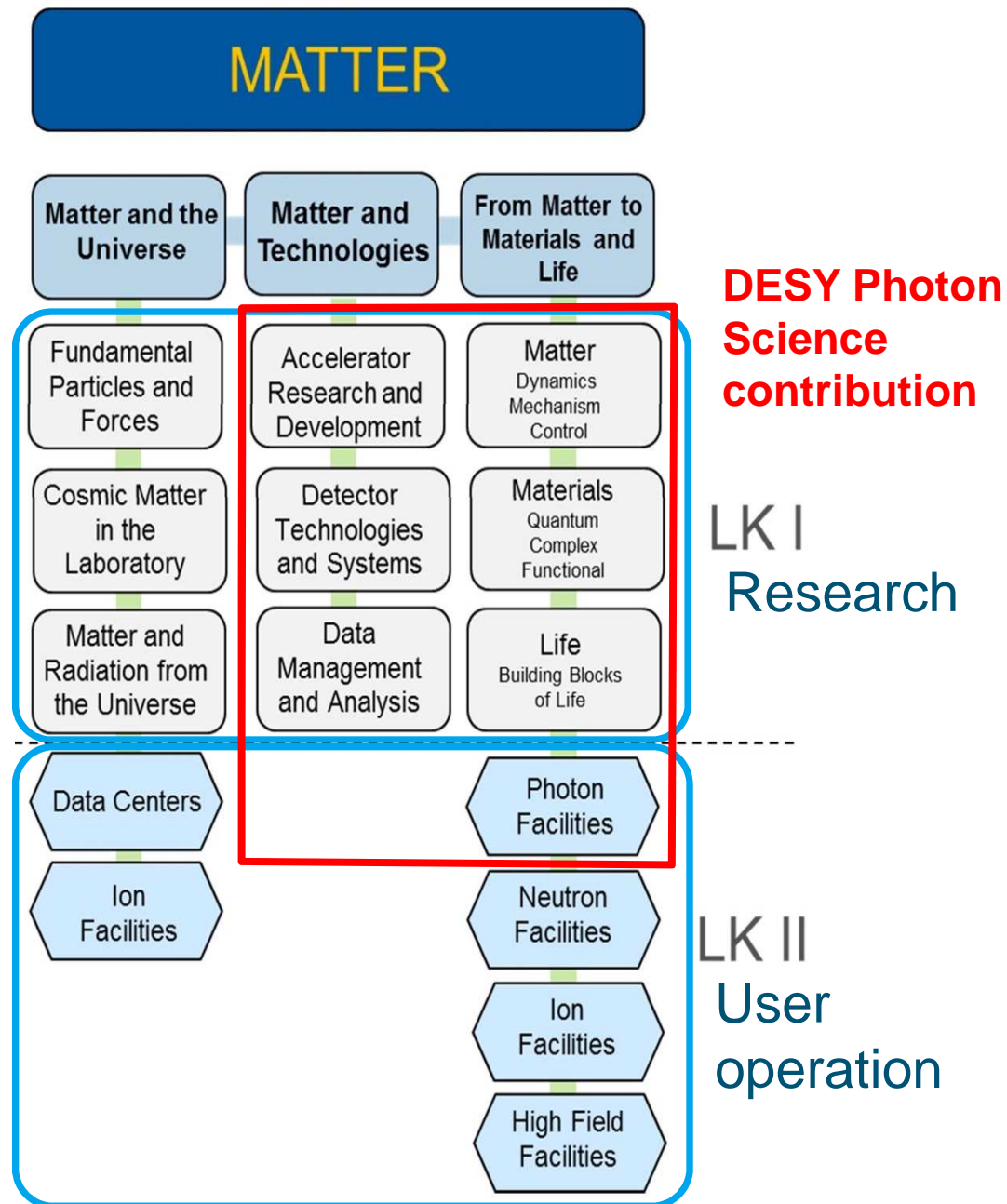
Key Technologies

Matter

Transport and Space



DESY:
only contributions
to research field Matter



DESY Competence Teams

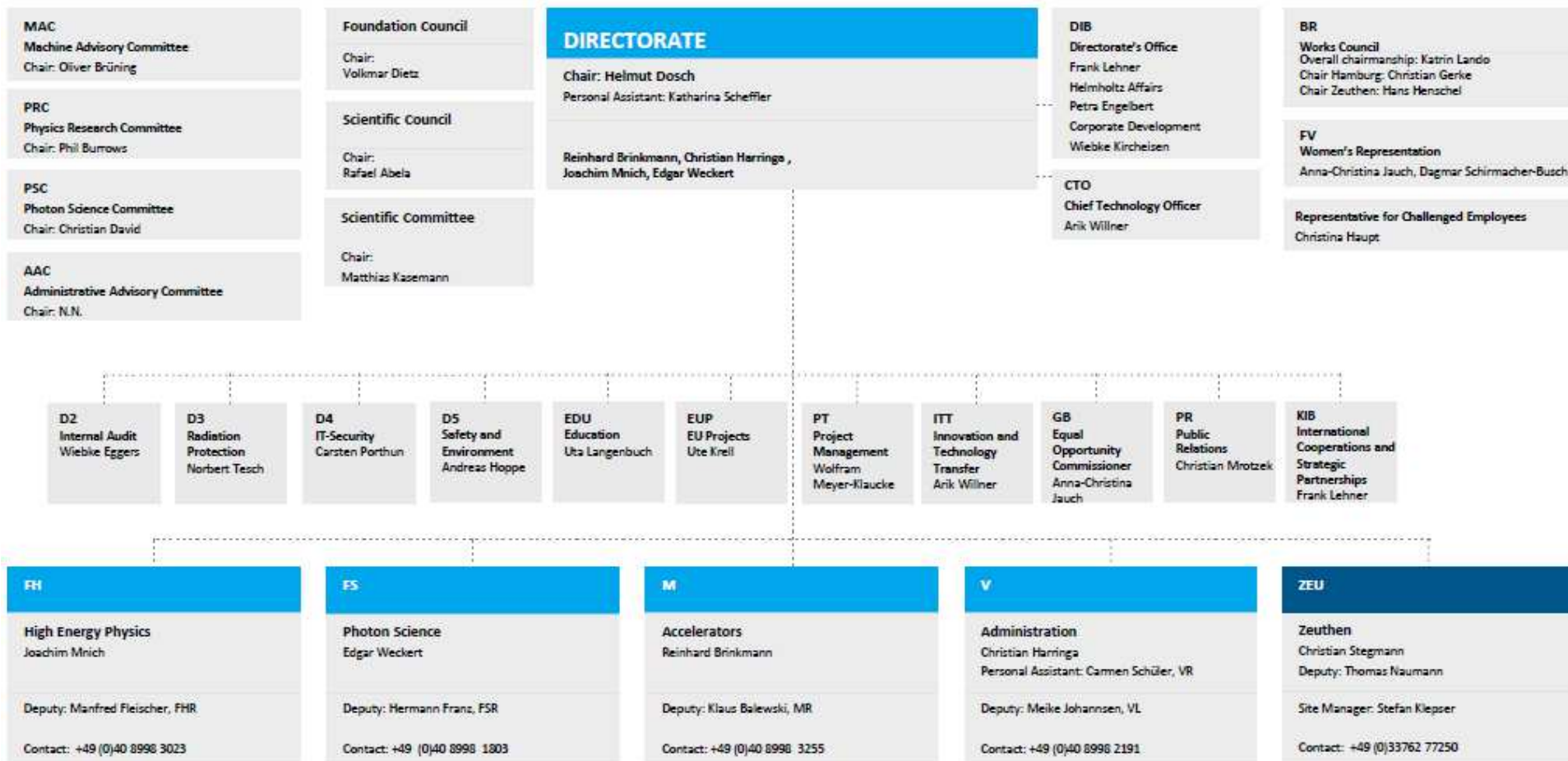


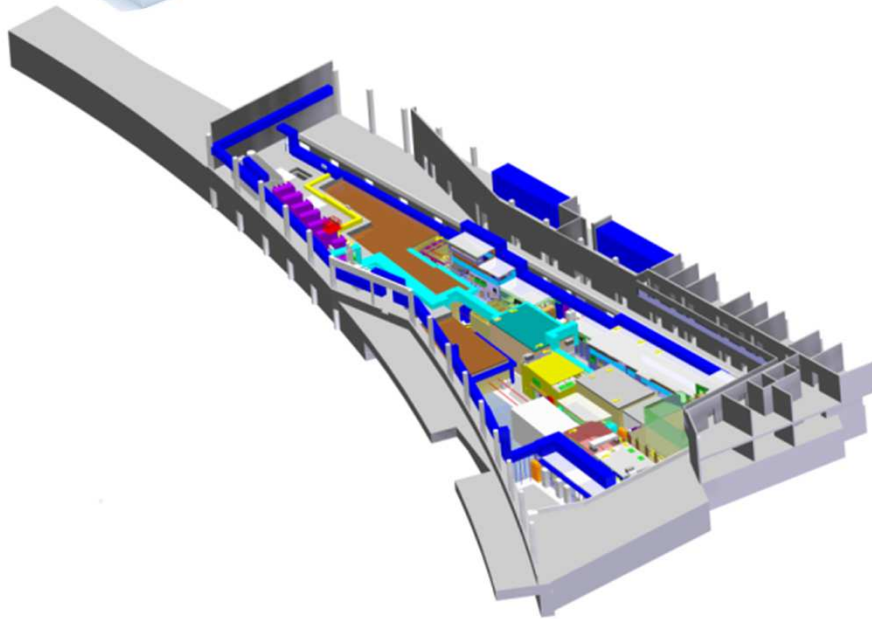
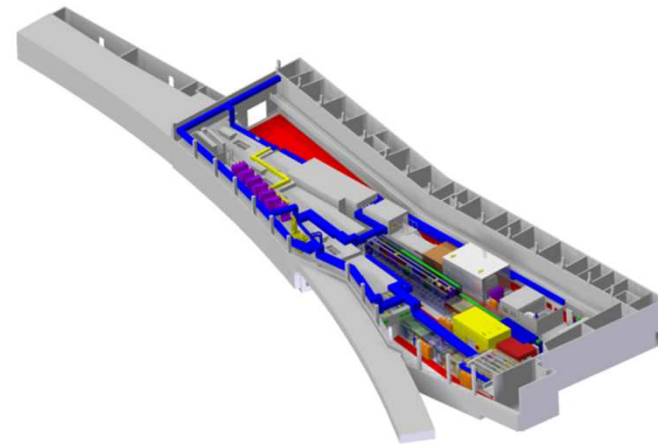
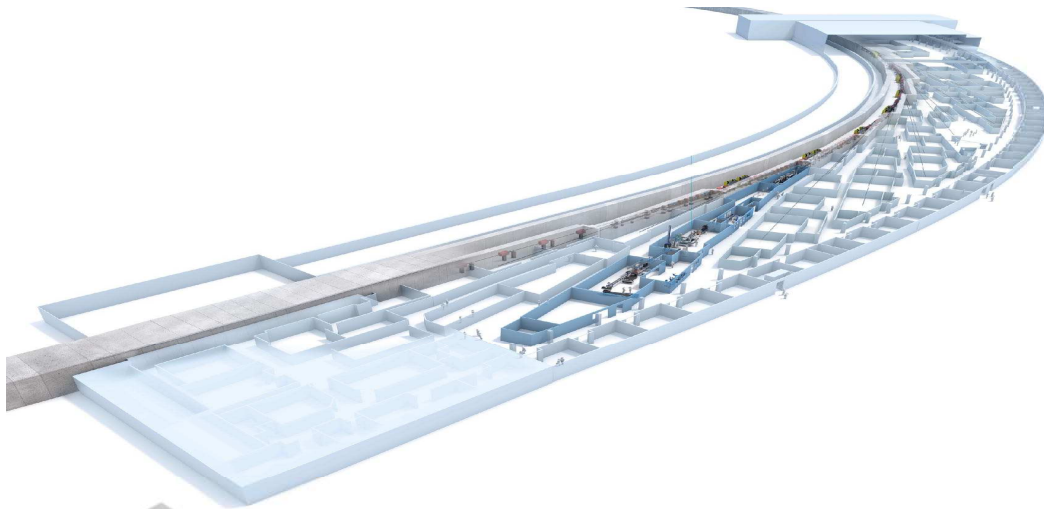
EPP	TPP	APP
Particle physics	Theory	Astro particles
B. Heinemann	G. Weiglein	M. Kowalski

Mat-DMC	Nano-Mat	Bio-Soft
Dynamics	Nano materials	Bio-Matter
R. Santra	A. Stierle	H. Chapman

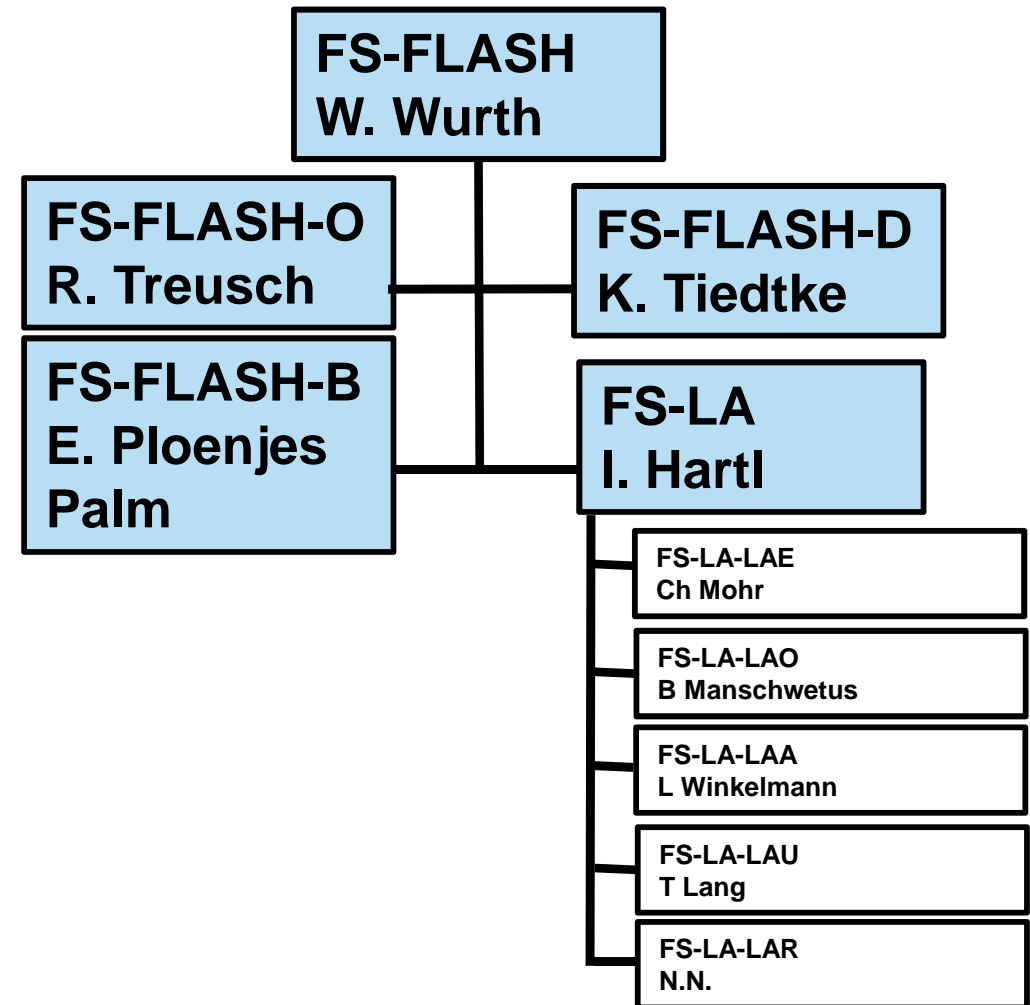
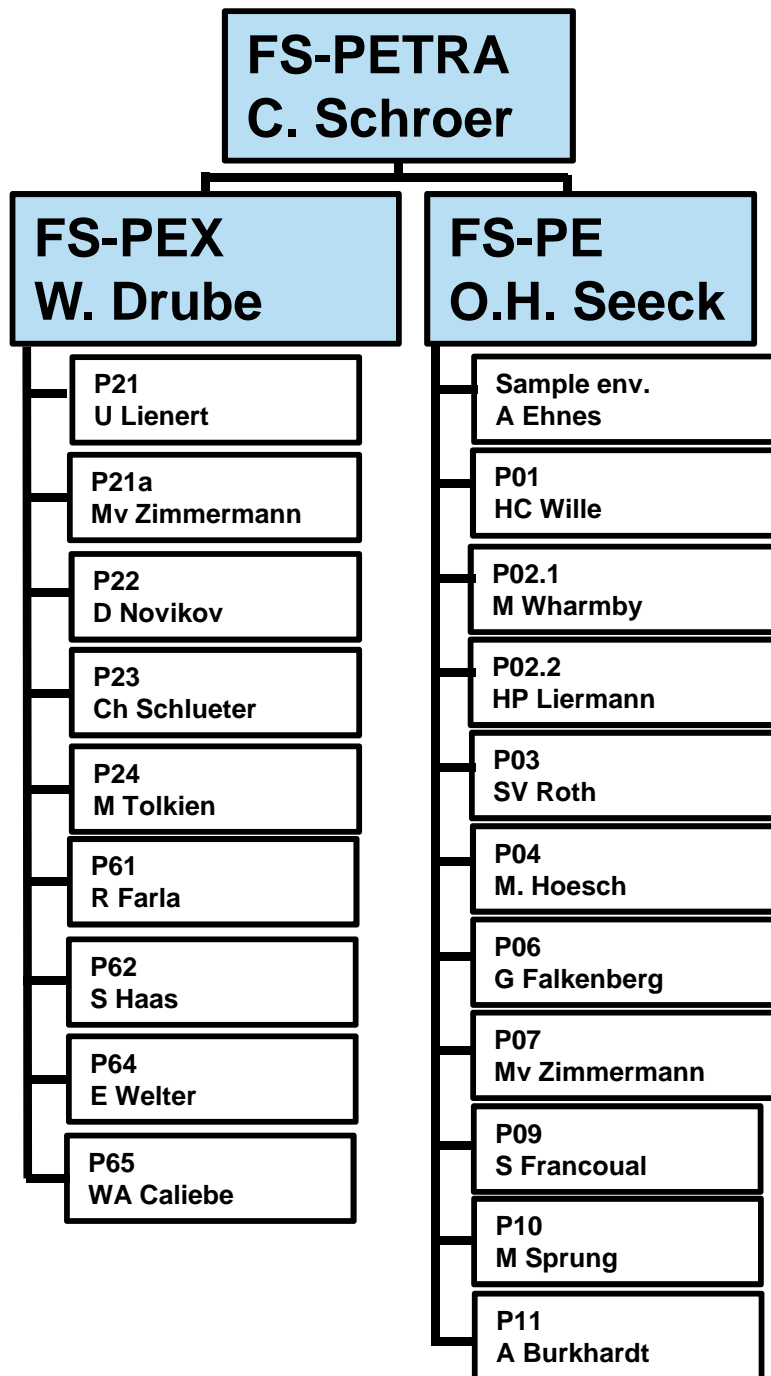
DTS	ARD	DMA
Detectors	Accelerators	Data mgmt
T. Behnke	R. Assmann	H. Weise
		V. Gülzow

DEUTSCHES ELEKTRONEN-SYNCHROTRON DESY





- **Typical annual operation hours: 5000 h**
 - 80% given to users via proposal system**
 - 10% for in-house research of the bl teams**
 - 10% for commissioning and maintenance**
- **Two calls for proposals per year, open to the international community**
- **International review pannels (some 70 members) prioritize the applications**
- **BL manager create beamtime schedules, published on the DESY webpage**

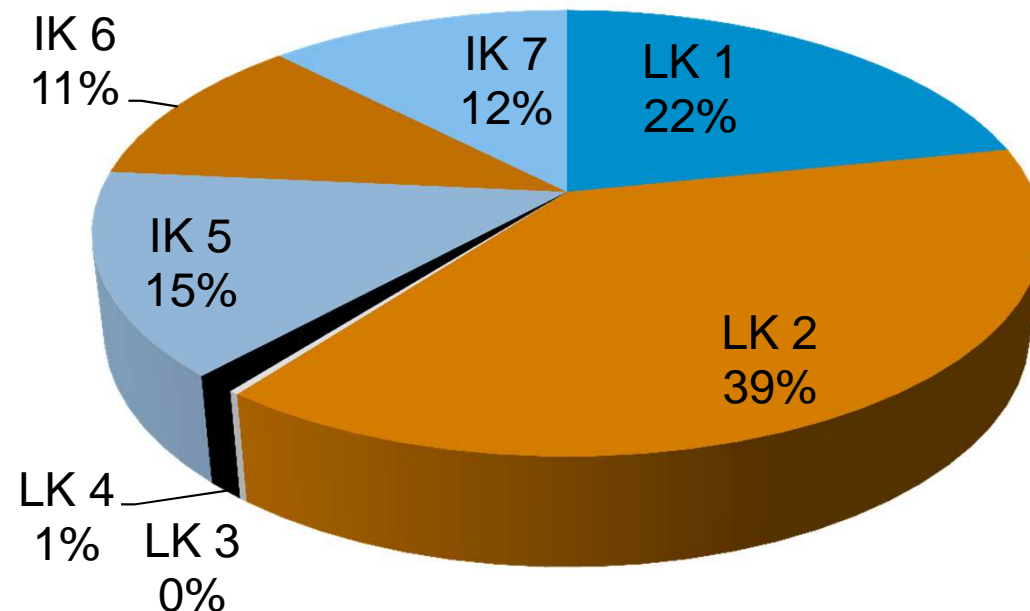


DESY spending profile

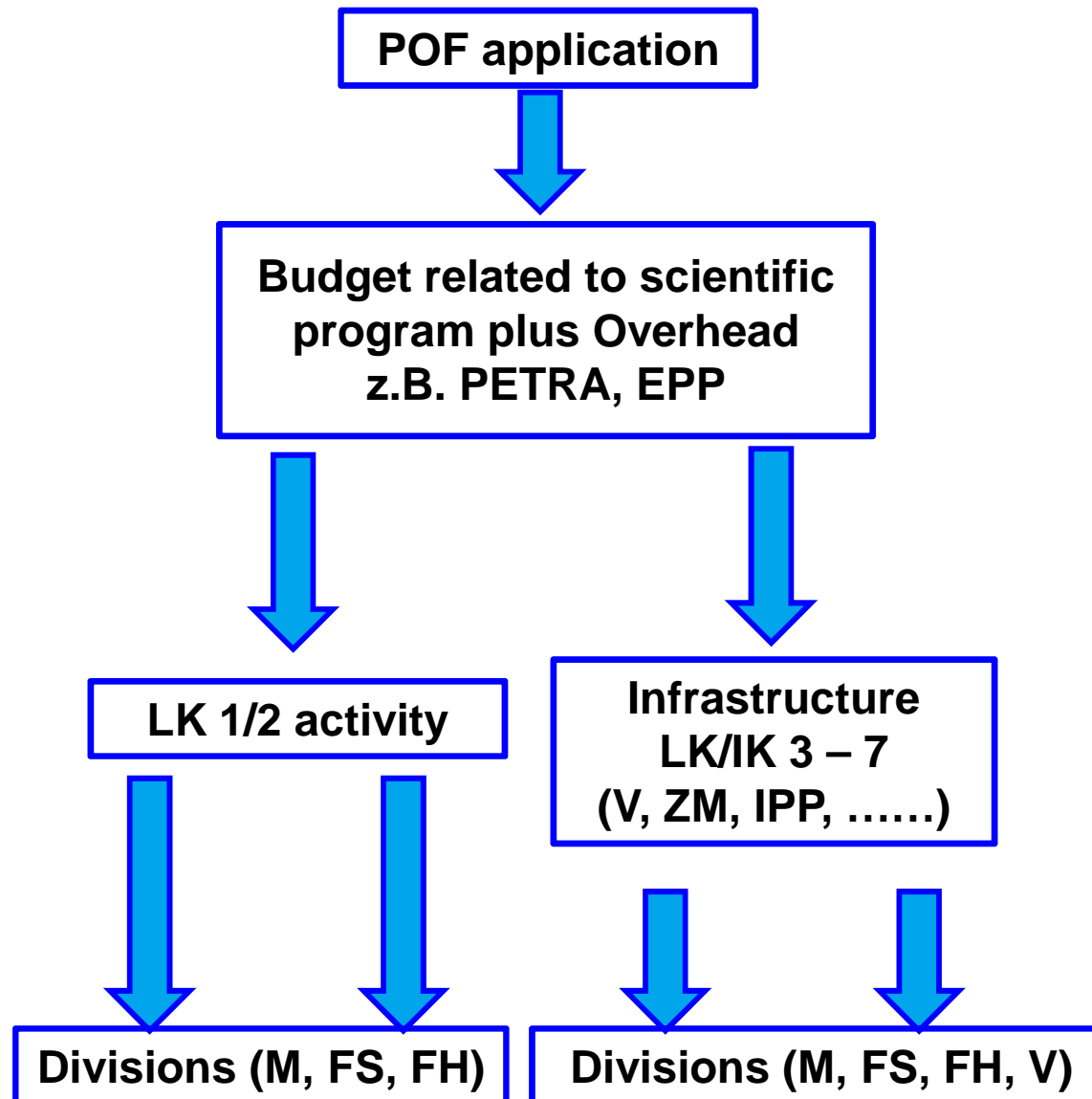


- LK 1: Research
- LK 2: User Service, large scale facilities
- LK 3: Innovation, start-ups
- LK 4: non scientific education (apprentices)
- IK 5: Management
- IK 6: Scientific Infrastructure
- IK 7: Basic Infrastructure

DESY Base Budget Ca 200 MEuro



LK: service category
IK: infrastructure category



The HGF POF system ensures secured funding for 5 (7) years

LK II facilities receive adequate funding for their operation cost (personnel, electric power, Helium, gasoline..)

HGF base funding covers some 90% of the operation cost

Partner contributions from

- EMBL
- HZG
- MPG
- Swedish research council
- Indian SAHA Institute
- German universities supported by BMBF via Verbundforschung

HGF Strategic Investment

Larger 15 MEuro, approved by the HGF Senate

Non-strategic HGF Investment

Approved by the Foundation Council

Special funds from BMBF

For large projects like PETRA III, FLASH II, PETRA IV

Approved now via roadmap process (new!)

Evaluated by the Scientific Council of the federal Government

The background of the slide is an aerial photograph of the DESY facility. The image shows a large complex of buildings, including a prominent curved white building with a circular structure on its roof. The facility is surrounded by lush green trees and a large body of water is visible in the distance under a cloudy sky.

Thank you for your attention