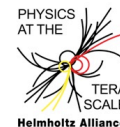


Computing Setup

Helmholtz Alliance

PHYSICS AT THE TERASCALE



Deutsches Elektronen-Synchrotron DESY +++ Karlsruher Institut für Technologie - Großforschungsbereich +++ Max-Planck-Institut für Physik +++ Rheinisch-Westfälische Technische Hochschule Aachen
+++ Humboldt-Universität zu Berlin +++ Rheinische Friedrich-Wilhelms-Universität Bonn +++ Technische Universität Dortmund +++ Technische Universität Dresden +++ Albert-Ludwigs-Universität Freiburg +++ Julius-Liebig-Universität Gießen +++ Georg-August-Universität Göttingen +++ Universität Hamburg +++ Ruprecht-Karls-Universität Heidelberg +++ Karlsruher Institut für Technologie - Universitätsbereich +++ Johannes Gutenberg-Universität Mainz +++ Ludwig-Maximilians-Universität München +++ Universität Regensburg +++ Universität Rostock +++ Universität Siegen +++ Julius-Maximilians-Universität Würzburg +++ Bergische Universität Wuppertal +++

Introductory School “Terascale Physics”

20-24 April 2015
DESY, Hamburg

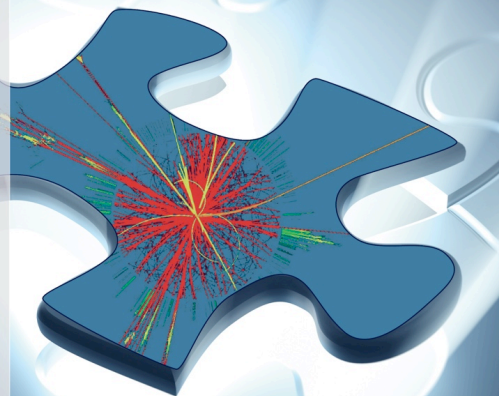
The introductory school aims at providing essential information and techniques for LHC physics. While targeting master and young PhD students, everybody is welcome to attend. The program consists of lectures and hands-on tutorials.

Lectures will cover:

- Higgs physics
- Top physics
- Standard Model processes
- Searches for new physics
- Present LHC detectors and upgrade plans for Phase II
- Soft skills

Tutorials will address:

- Introduction to ROOT
- Full analysis walk-through
- Fast detector simulation



Registration fee: 50 Euro
Registration deadline: 17 April 2015
Please register via workshop page.

www.terascale.de/intro2015

All you need to achieve today...

We set up a special WLAN for the school, please use this one:

- > Name: terascale
- > WPA/WPA2-PSK: XxPWjNH7

Desktop computers for the 6 participants who requested these:

- > User: desyuser
- > Password: 12qwaszx

NAF login nodes for school: 6 machines with 8 cores each – use the one connected to your account to get equal load!

- > `ssh -Y schoolXX@naf-school0X.desy.de` (or `-x`, `-X`,...)
- > `module load root/5.34`



Check if your root works

> root

> TBrowser(); ### are you really able to open a window?

you are fine for today!!!

See you all later for the Get-Together in the Foyer of the Auditorium!

