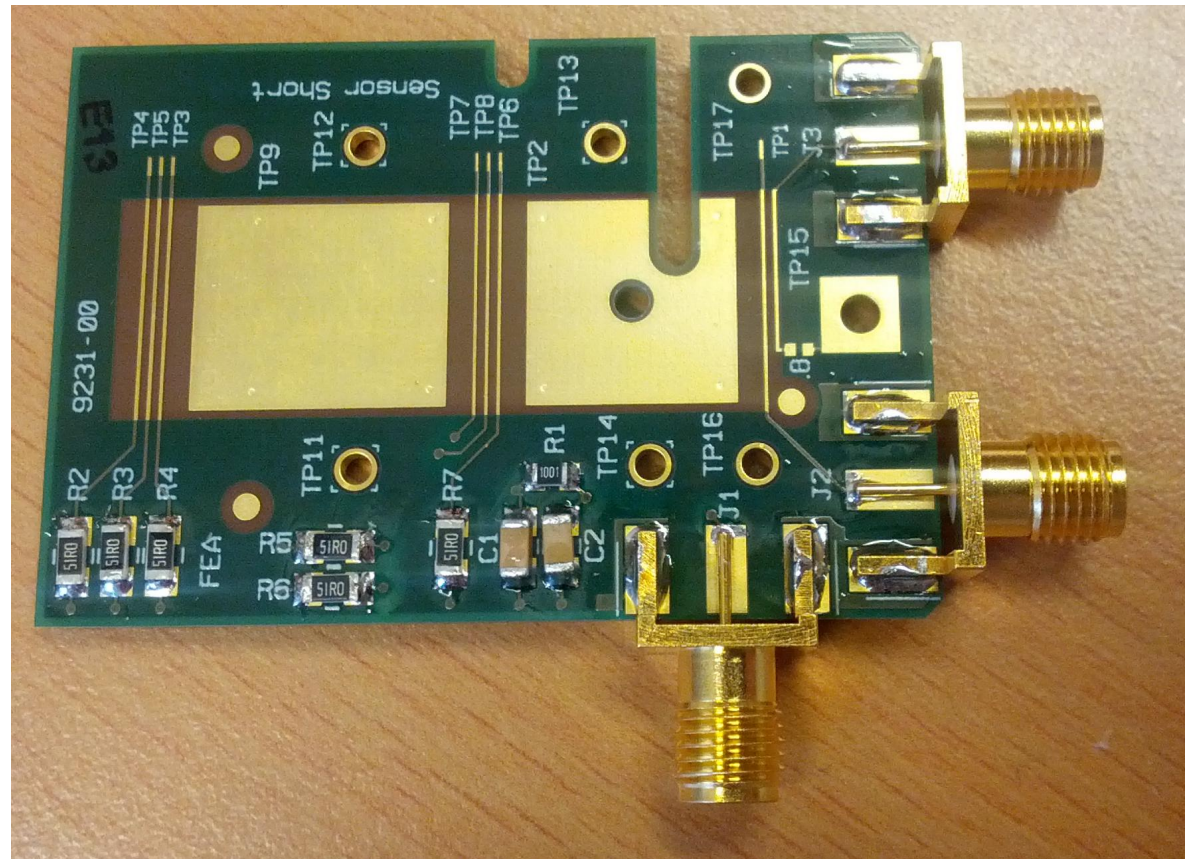


PCBs and mounts for TCT

An example

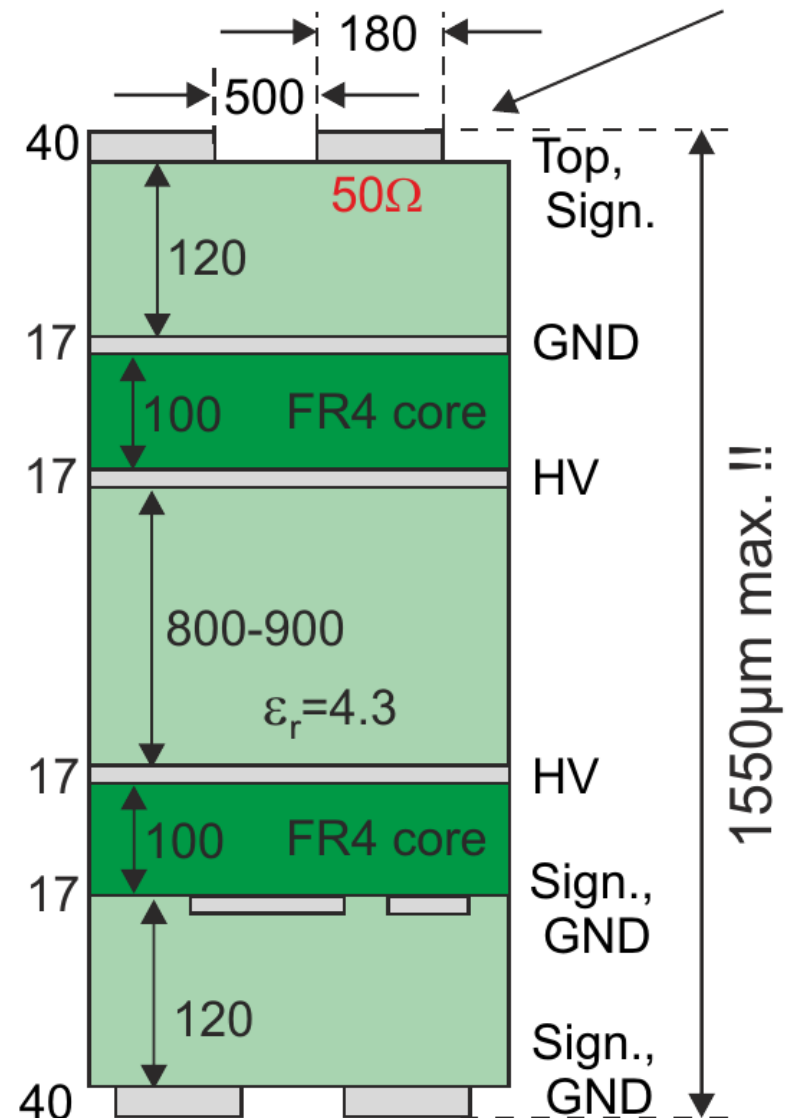
Our PCB

- Designed at DESY
- For Top/Bottom/Edge-TCT
- Usual sensor size:
10 mm x 10 mm
- Up to 30 mm x 10 mm
- Filtered HV from J1
- Two signals
- Hold-down clamp
→ No glue needed
- Mount for measurement
and bonding



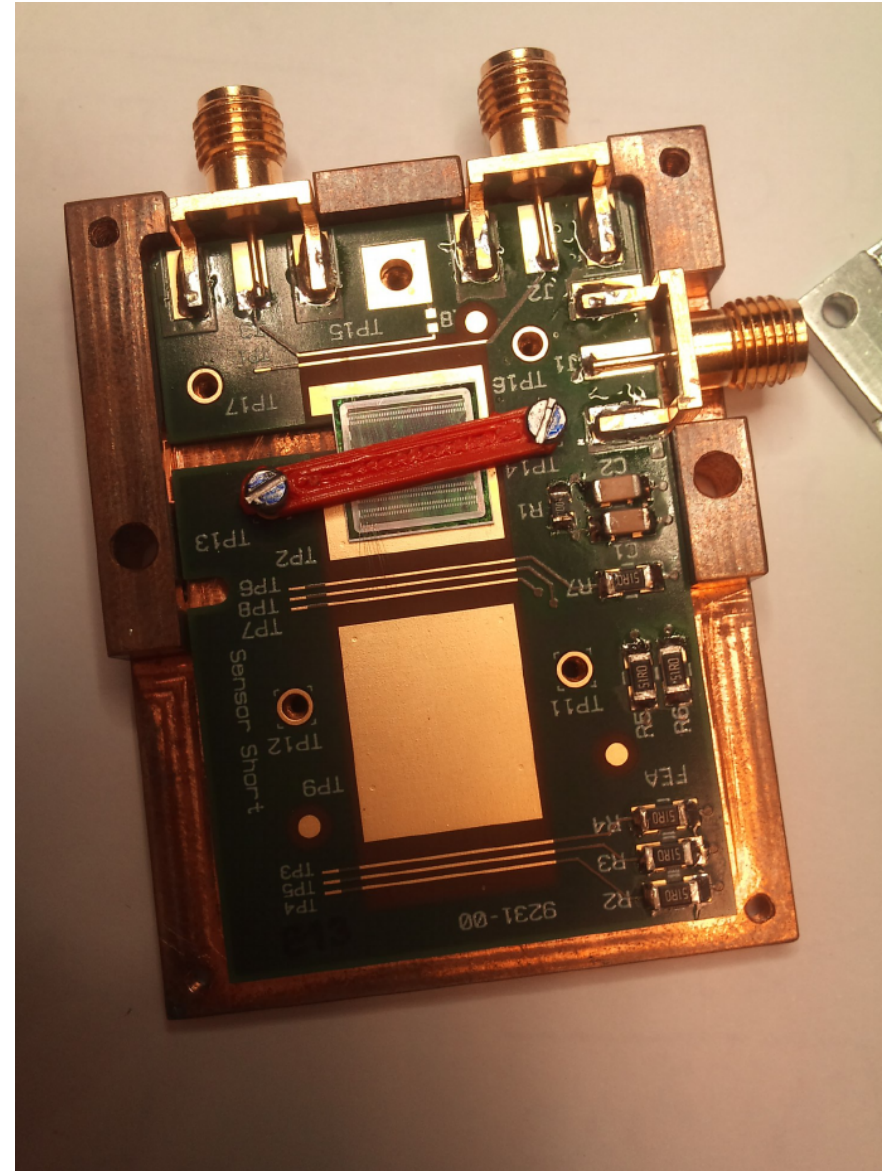
Layer view

- High analogue bandwidth
- Flat
- Impedance-matched traces
- No “ringing”
- Bonding on traces

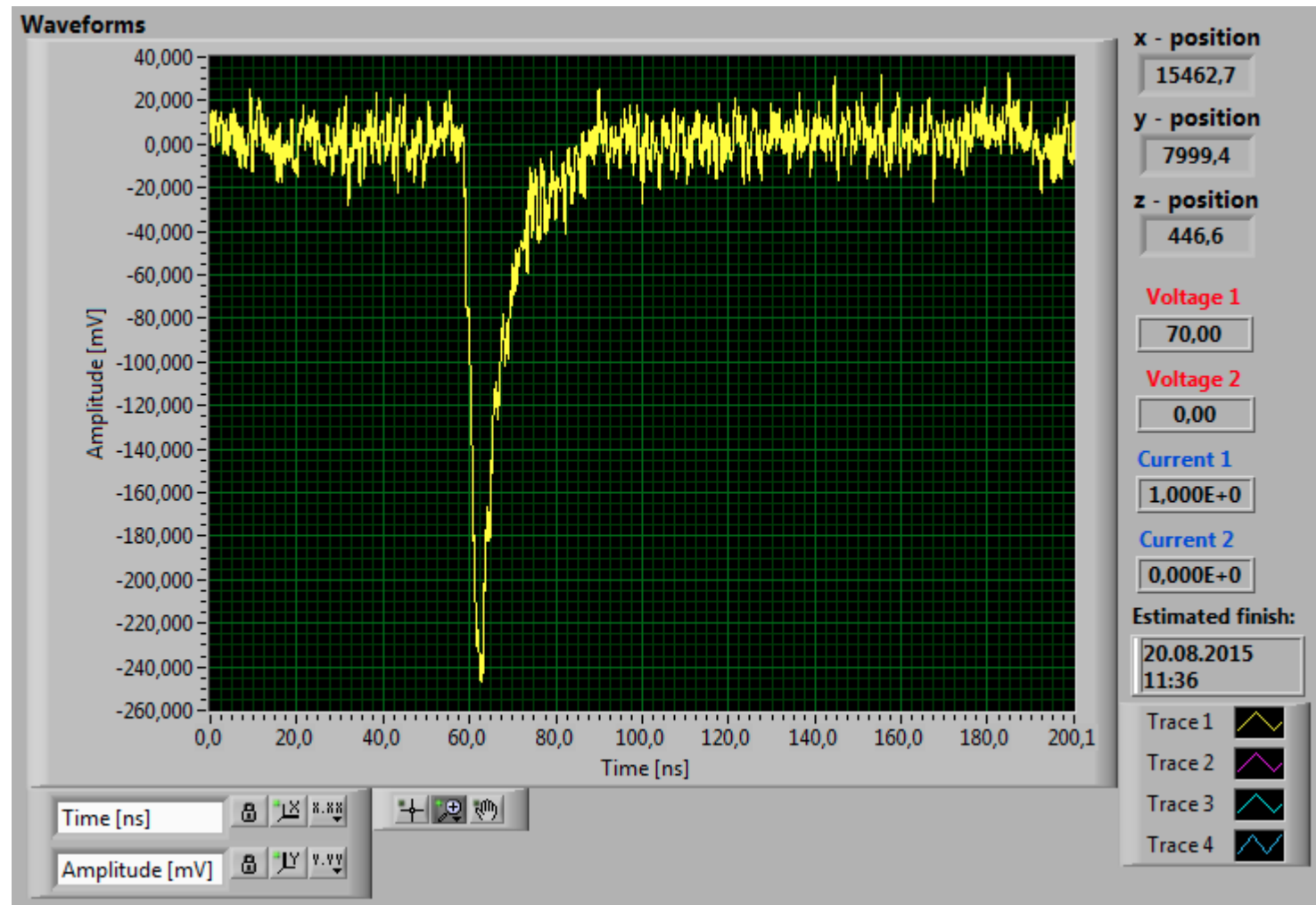


PCB with mount

- 3D printed hold-down clamp
- One PCB per sensor
- Copper mount designed @UHH
- Need two mounts:
 - 1) Measurement
 - 2) Bonding
- Openings for Top/Bottom/Edge TCT in mount



Signal



Other PCBs?

- No material from others have been sent.
- So let's discuss:
 - What are your experiences with PCBs?
 - Which functionality is needed additionally?
 - Who would like to use our PCB + Mounts?
 - ...