

LMU München - Excellence Cluster Universe

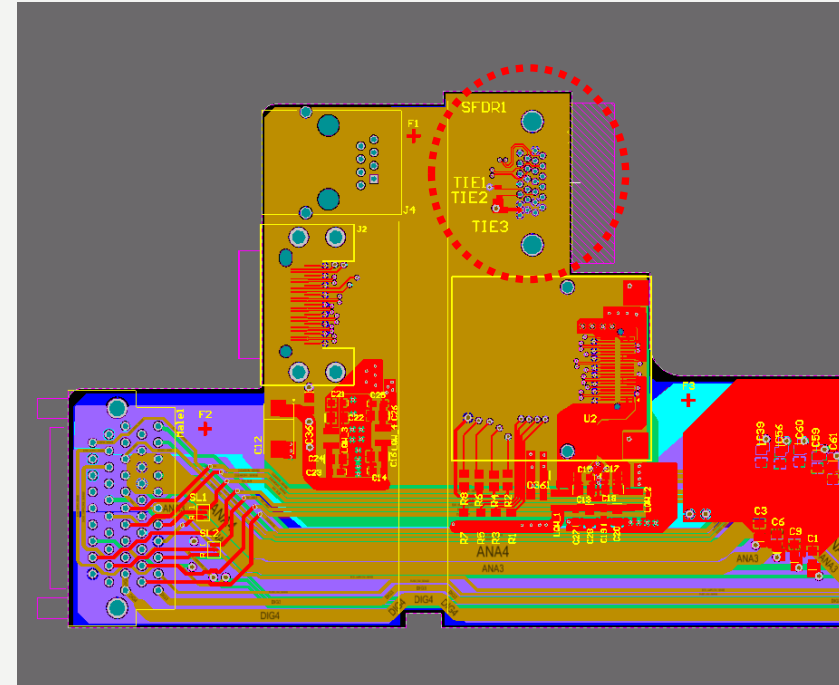
# Status of Dockbox and PP's

**Stefan Rummel**

10.01.17



- 4 prototypes with Displayport connector available
  - Useful as power adapter board
  - Testing of optical transmitter
- Collaboration decided to go for alternative cable for data transmission
  - Redesign of board necessary
- Design incorporating the Cameralink connector finished
  - Production after crosscheck @ TUM





- 4 PP with single connector are in use in the collaboration
- Test showed an issue with the assignment of the RJ45 connector, exchange of two links
- The DHP\_IO voltage supplied to DHE has been under discussion: Baseline for the two signals are DGND\_SENSE and DHP\_IO\_SENSE
- Adapter boards to fully test PP using the cable tester, installed at LMU, available since December
  - Full test of assignment, open/shorts, resistance
- Examination of second batch ongoing, incorporating the issues learned from the 1<sup>st</sup> batch
- A further prototyping run is planned to incorporate through hole contacts to solder the InfiniBand cables instead of pads

# Backup