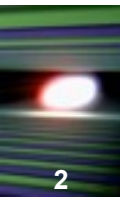


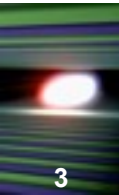
Introduction

Tobias Haas
Technical Meeting
3 Feb 2017



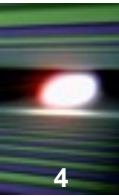
- Status Accelerator
- Progress with electronics cabling and firmware
- Activities in XTDs
- XHEXP1 status report

Status Accelerator: Achievements



- Beam operation with energies up to 700 MeV with up to 10 bunches @ 0.5 nC
- Work is ongoing on tuning RF and modules:
 - Tuning of A2/L1 almost completed
 - Tuning on L2 started
 - A3,4,5 transmitters taken into operation,
- Emittance measurements and improvements in the injector (1.1 μm rad both directions)
- Work on L3 started
 - A18,19,20 transmitters are taken into operation
 - Coupler conditioning starting

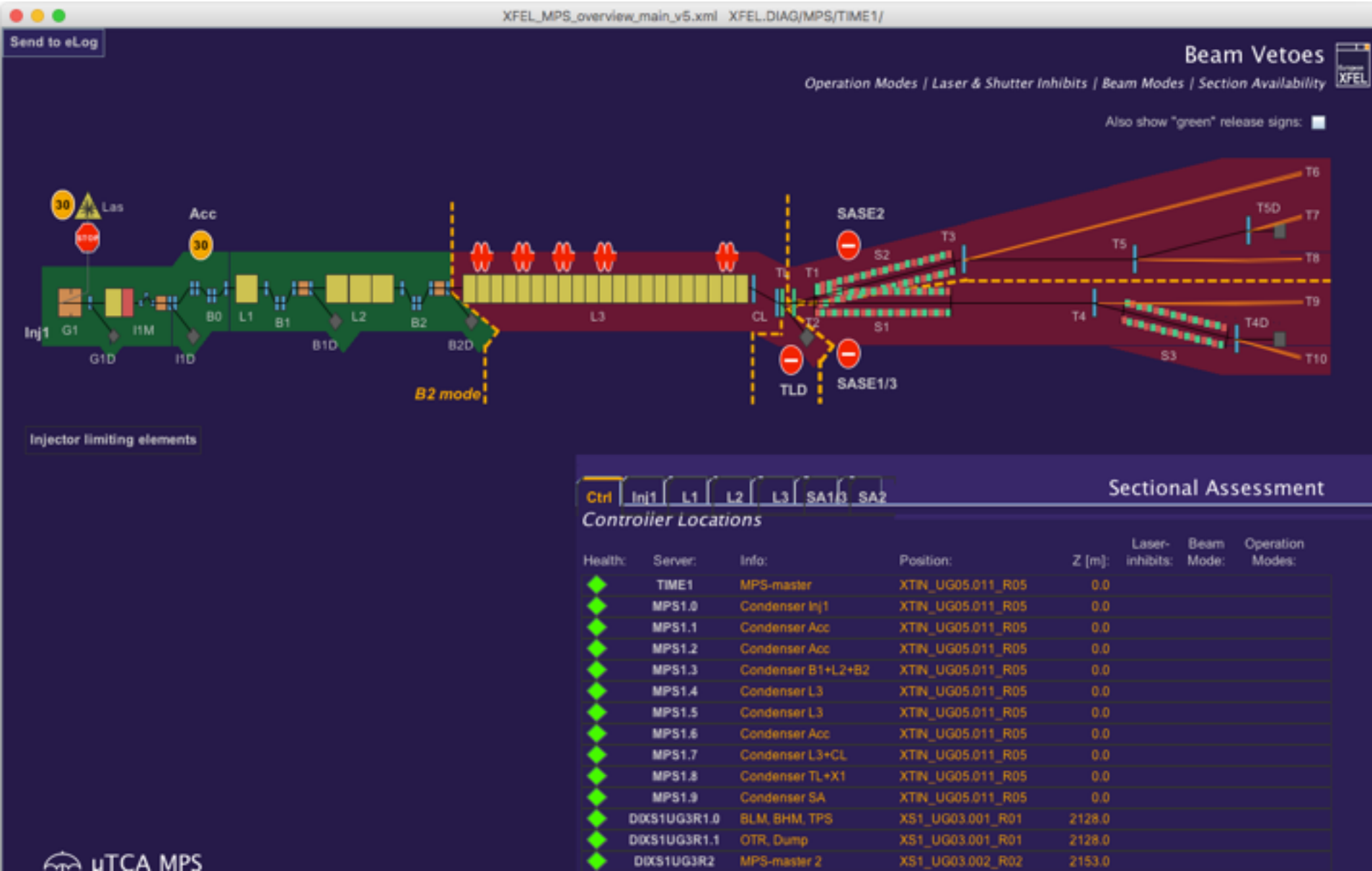
Status Accelerator: Problems

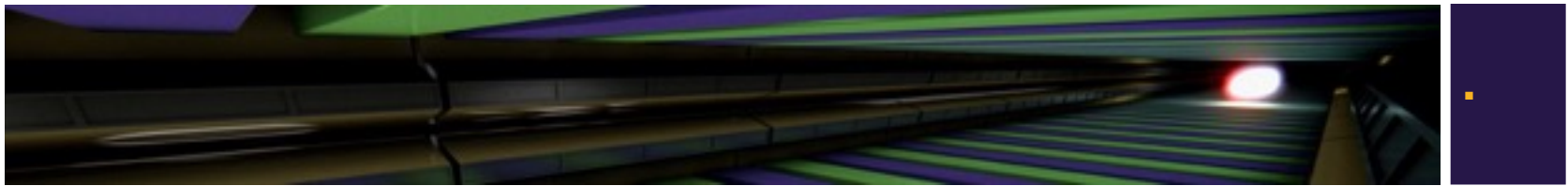


- Cold Compressors warmed up last weekend
 - One filter needed cleaning,
- Access for cryo maintenance
- Some time needed to get beam back into XTL
 - Various little problems
- Working on getting beam to B2D through L2
 - Thursday afternoon: 77% transmission

Beam Operation up to B2D

5



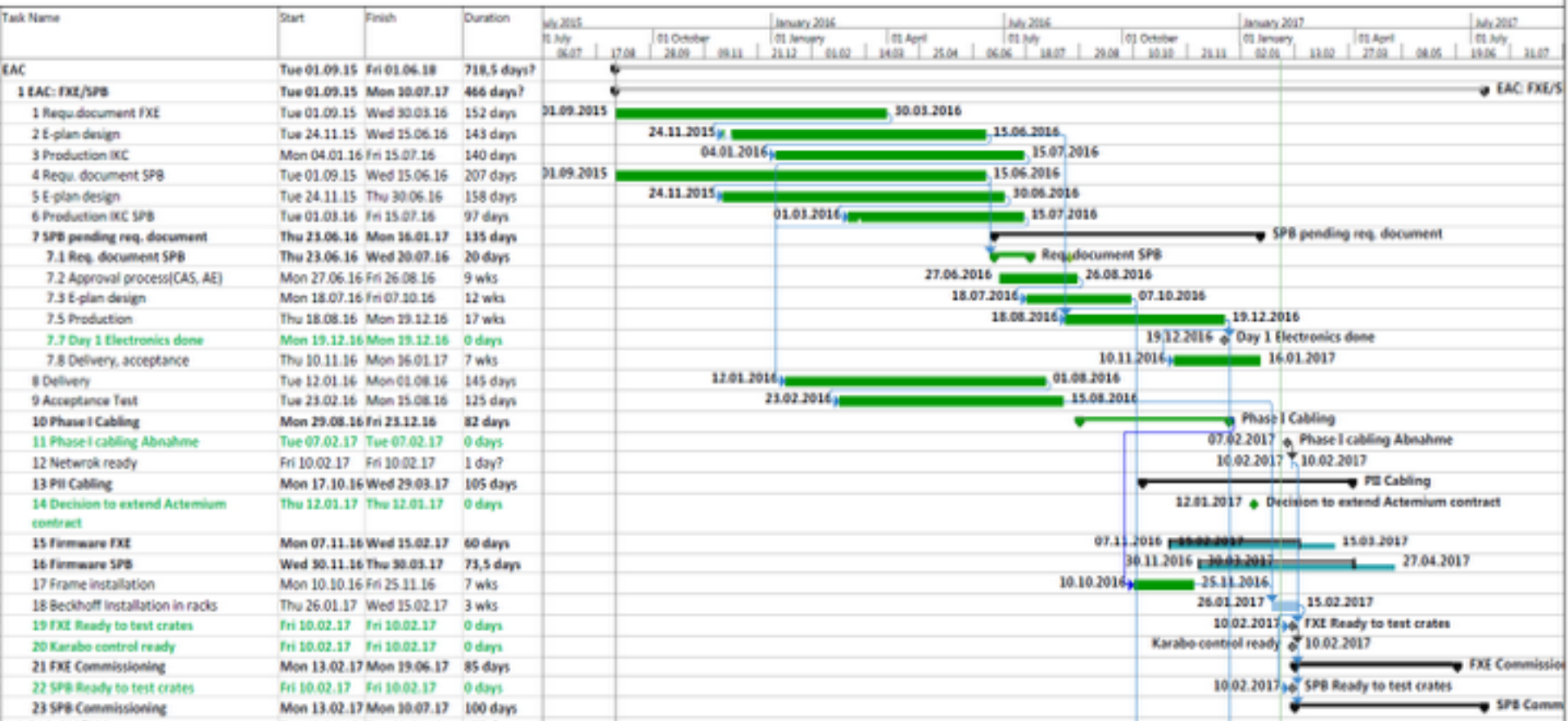


Status of Beckhoff components

Planning: SASE1

L Coordination Plan

Date of last change/save: Thu 02.02.17



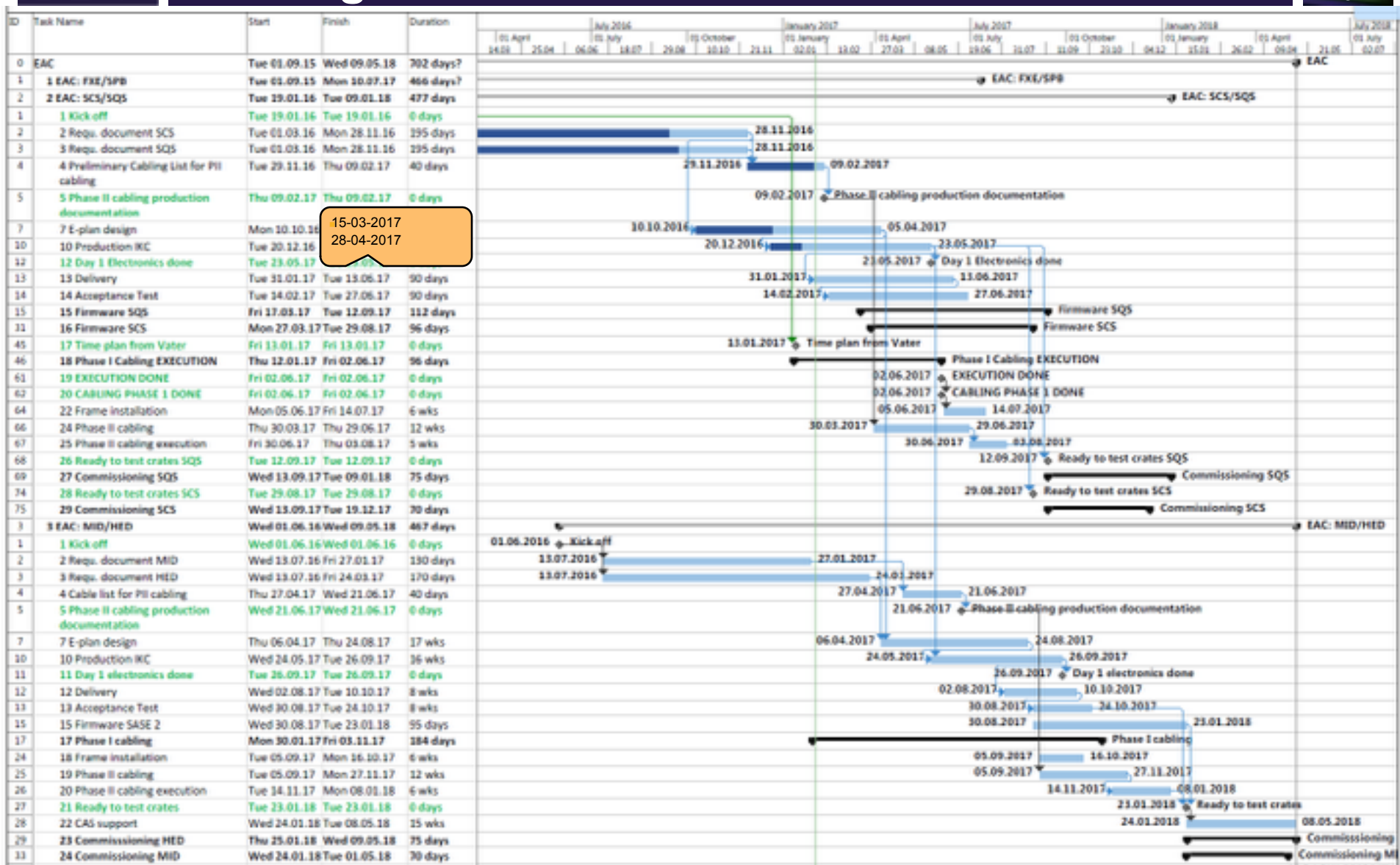
- New dates for firmware:

- FXE: 15.03.2017

/

SPB: 27.04.2017

Planning: SASE3 and SASE2



Planning: SASE3 and SASE2

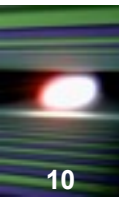


- There are some CRD from SCS/SQS still missing.
- Several CRD temporary stopped in the approval process by CAS.

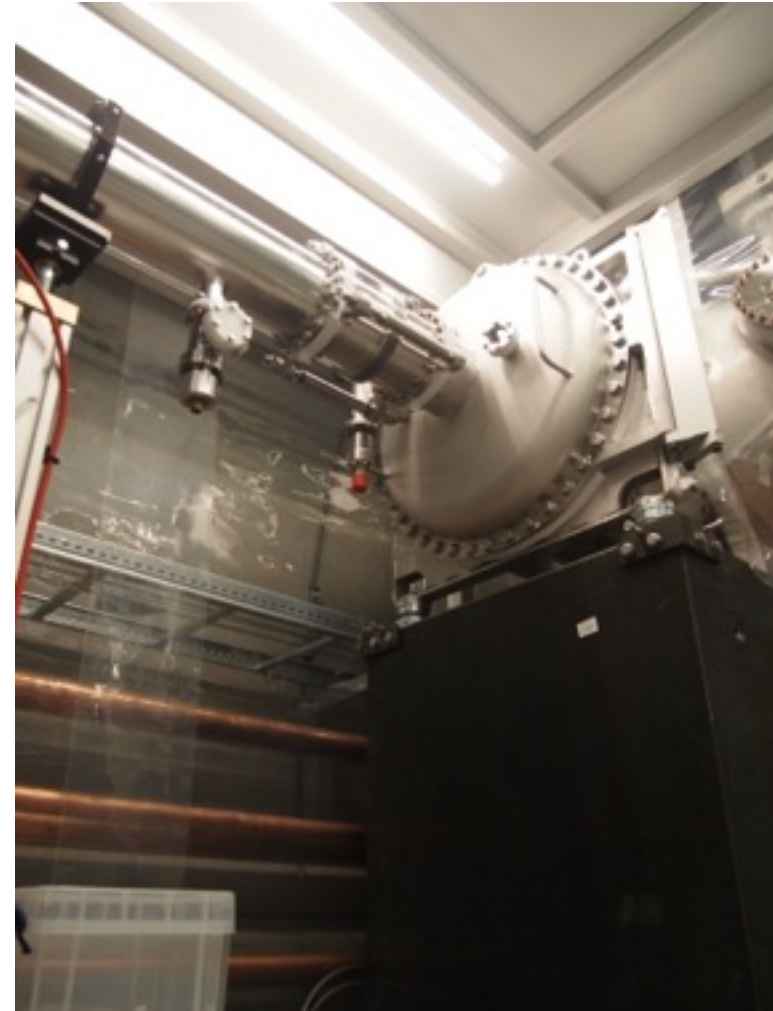


- EET has not enough documents from SCS/SQS to design the E-plans.
- Production with second supplier slowed down until enough CRD will be available to design E-plans.

Activities in XTDs



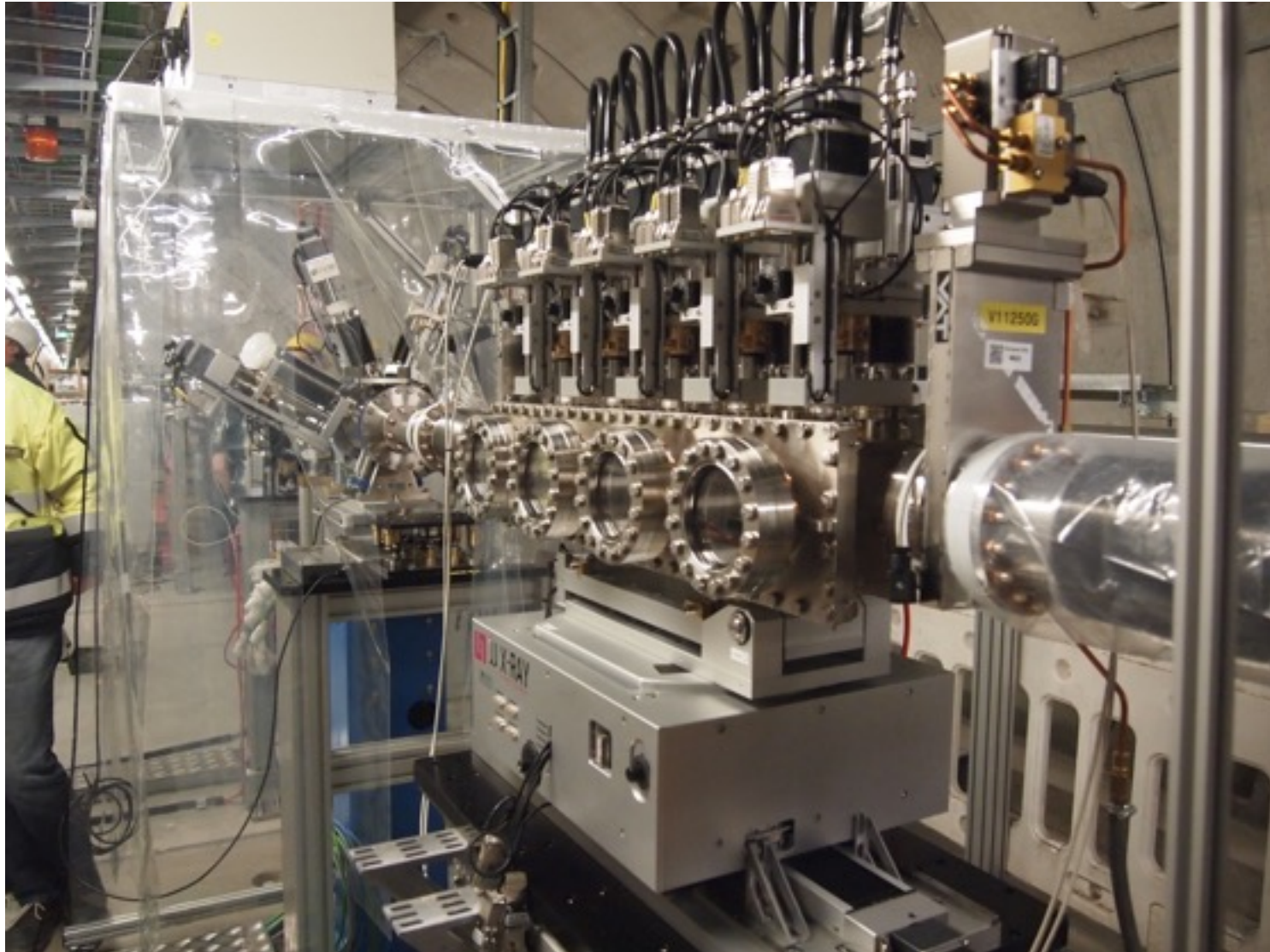
- Photon Vacuum closed in XTD9
- Intense activity on Beckhoff and software integration
 - Follow-up in SASE1 readiness meeting at 0900



XGM Gas System



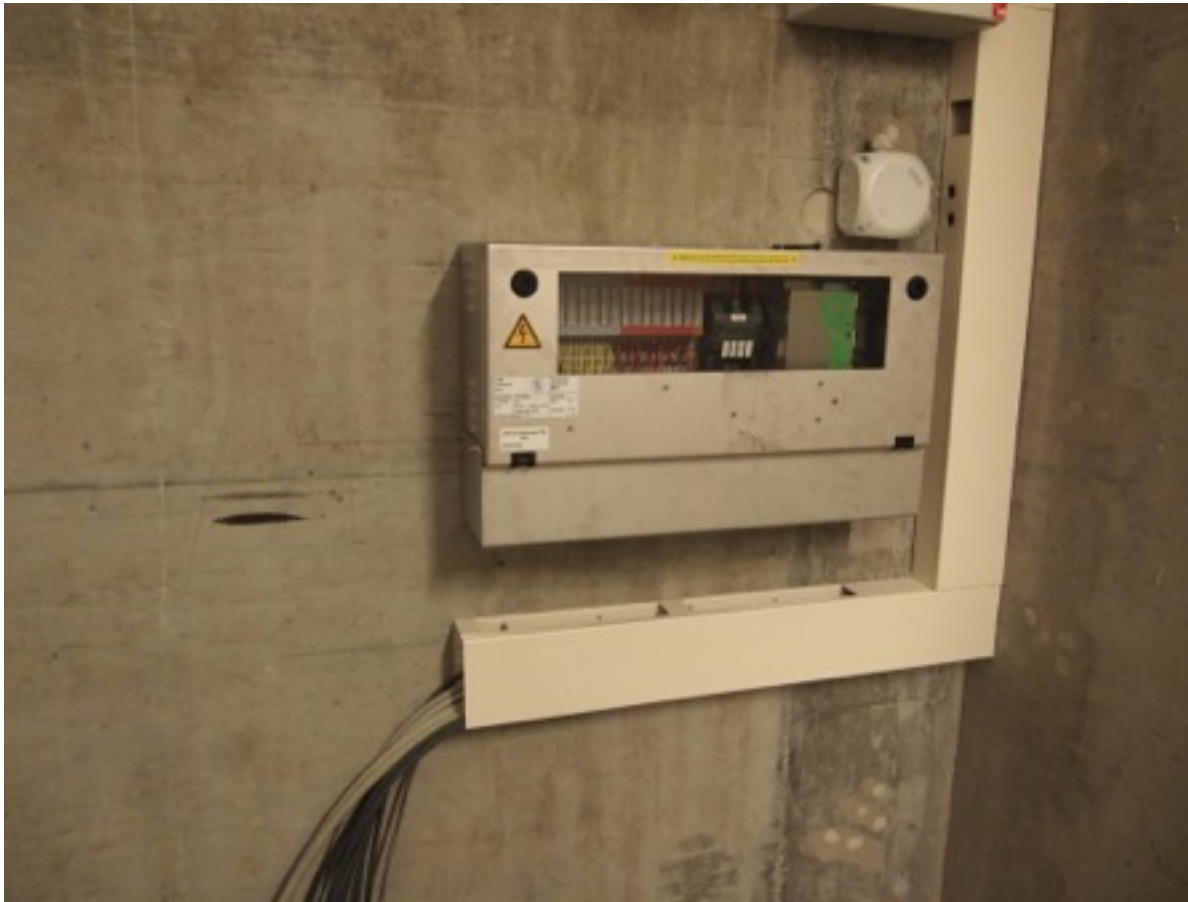
SPB CRLs and Attenuator



Cabling for SPB Tunnel Components



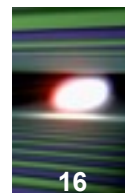
Interlock Cabling



SASE3 Undulator Alignment



XHEXP1 Smoke Test

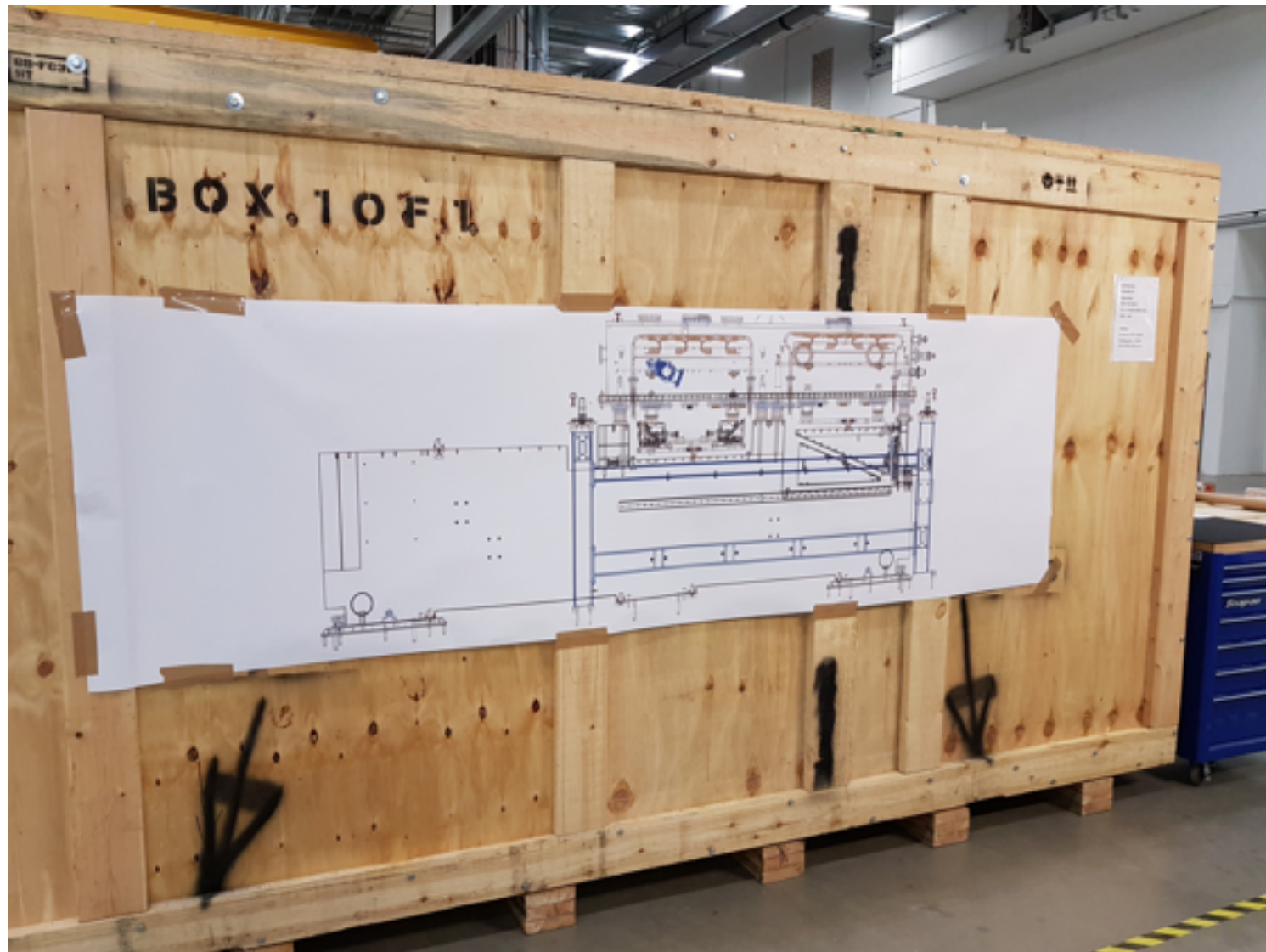
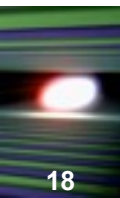


Experiment Hall



- First (internal) smoke extraction test was successful
- Phase 2 Cabling of FXE done
- Phase 2 Cabling of SPB optics done
- SASE1 Phase 1 Cabling documents received
 - Handover: 7 Feb
 - Networks operational a few days later
 - FXE ready to test crates!
- Crate installation in FXE rack room started
- SPB NKB Mirror tank arrived
- SPB/SFX Control Room furniture

SPB/SFX NKB Mirror



SPB SFX Control Room



SPB/SFX D.09 AC Curtains



SASE1 Phase1 Cabling



SASE1 Top Open Issues



- XHEXP1 Sewage pump
 - Waiting for the new pump announced by TS 2 weeks ago
- MKK compressed air
 - 2 Weeks ago:
 - Dräger finally connected their system to the DESY infrastructure...
 - ... but only in XHQ

SASE3 Media Installations



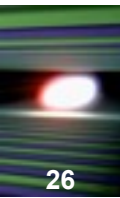
SASE2 Media Installations



SASE2 Instrument Laser Hutch AC Installations



Next Meetings



- SASE1 Readiness by invitation
 - Today 09:30 after TechMeet in this room
- Next XHEXP1 hall coordination meeting
 - Friday, 27 Jan 8:30