

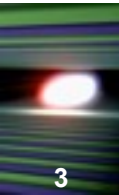
Introduction

Tobias Haas
23 June 2017



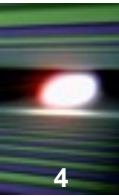
- Rad Safety Measurement/Beam in the hutches
- SASE2/3 Schedule
- Status

Beam in the hutches/Rad Safety Measurements



- Very low intensity beam to go into the SASE1 hutches today:
 - Beam parameters: 1 bunch, 2Å (6.2keV)
 - SPB Optics, FXE Instrument, SPB Instrument
- No special precautions are required outside the hutches
- No dedicated rad safety measurement will be done
 - Will be done once 30 bunches @ 9 keV available
- In the hutches the following safety trainings are required:
 - General Safety (AllgSi)
 - General Radiation Safety (StraSchu)
 - XFEL Safety (SiXfel)

New Milestone 1: “Hutches Handed to Instruments”



4

- All hutches in the area are built
 - Doors can be locked and hutches cleaned
 - ➔ Control of hutches handed to Instruments/Laser
 - Hutches supplied with (provisional) power + light
 - Heavy Installations in exp/laser hutches done:
 - ➔ AC-devices + out/inlets, cable trays, gas/water pipe
- IT-services available through WiFi on request.
- Not yet available:
 - AC, gases, cooling water and pressurised air
 - Interlock & access control
 - Motor & detector cables
 - Safety sensors

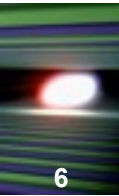
New Milestone 2: “Hutches and Infrastructure Operational, Step 1”



5

- “Hutches Handed to Instruments” +
 - Final power and lights
 - Cooling water
 - Phase 1 cables & components in instr. hutches done
 - AC with temperature stability w/o fine tuning
 - Laser Interlock

New Milestone 3: “Hutches and Infrastructure Operational, Step 2”



- “Hutches and Infrastructure Operational, Step 1” +
 - Gases and pressurised air
 - Radiation interlock & access control (DACHS)
 - Safety sensors (gases, water, fire) active
 - IT operational (Cabling Phase 1)
 - Cabling Phase 2 for day 1

SASE3 Milestones

7

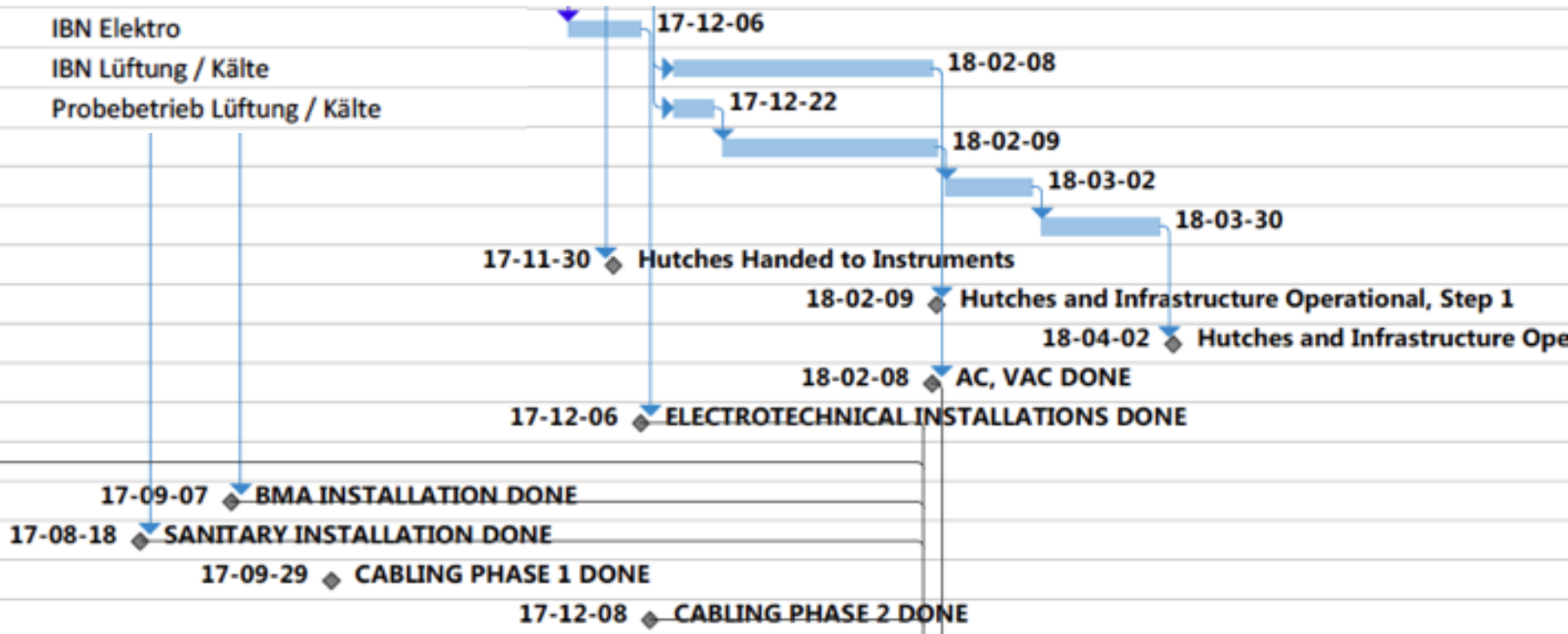
Inbetriebnahme

Einbau Racks und Inbetriebnahme

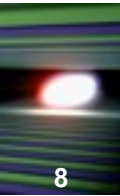
IBN Elektro

IBN Lüftung / Kälte

Probetrieb Lüftung / Kälte

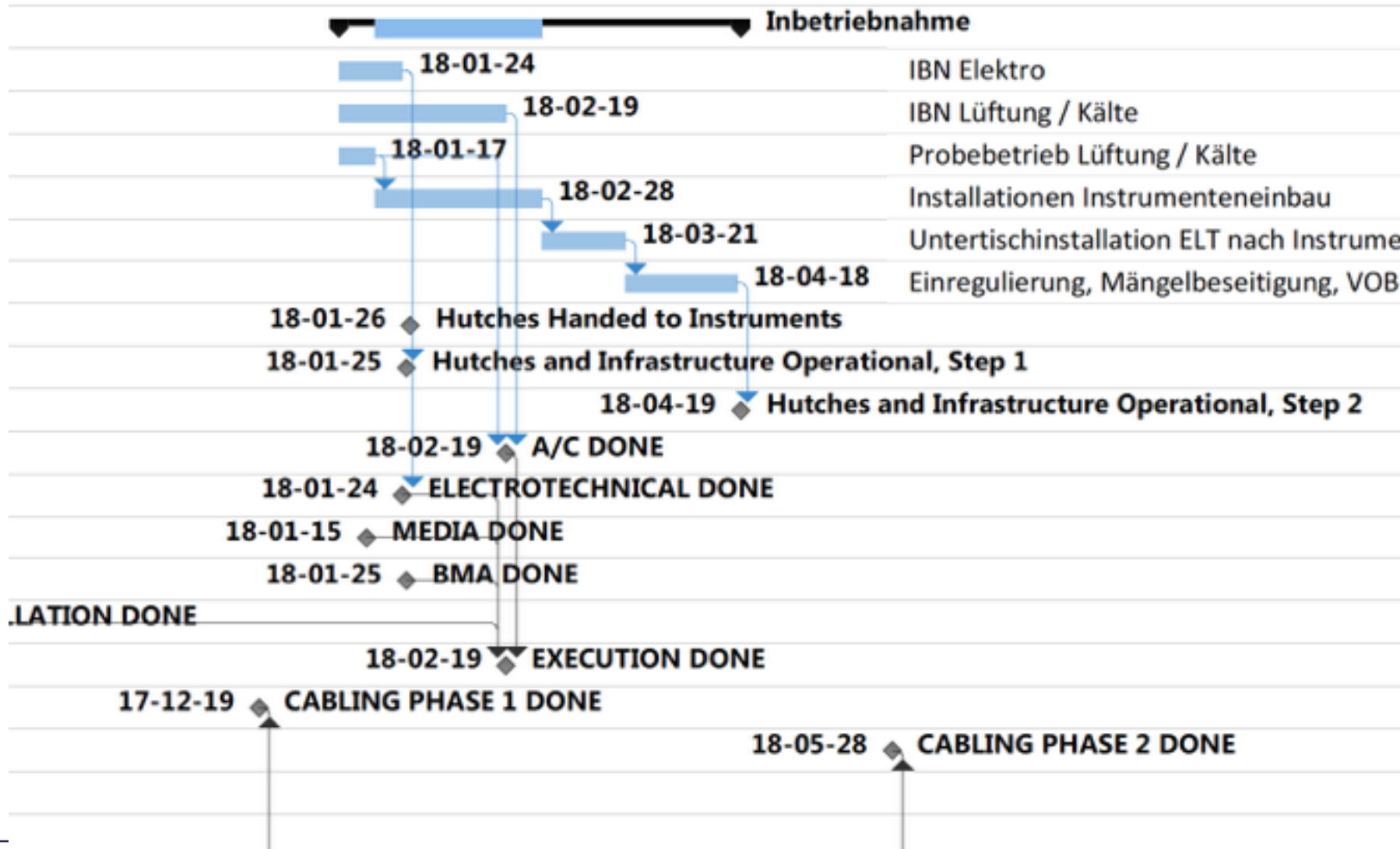


SASE3 Milestones

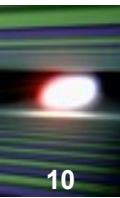


- Hutches handed to Instruments:
 - 30 Nov 2017
- Hutches and infrastructure operational, Step 1
 - 9 Feb 2018
- Hutches and infrastructure operational, Step 2
 - 2 April 2018
- Cabling Phase 1
 - 29 Sep 2017
- Cabling Phase 2
 - 8 Dec 2017

SASE2 Milestones

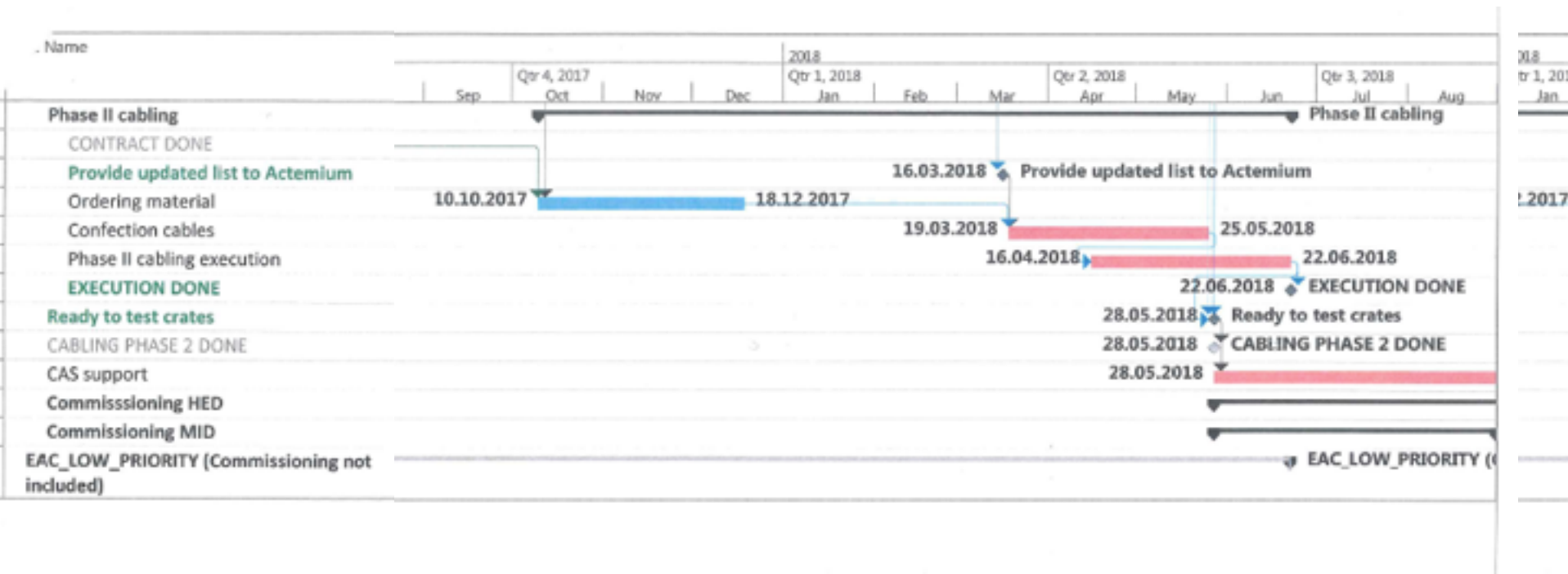


SASE2 Milestones



- Hutches handed to Instruments:
 - 26 Jan 2018
- Hutches and infrastructure operational, Step 1
 - 26 Jan 2018
- Hutches and infrastructure operational, Step 2
 - 22 Jun 2018
- Cabling Phase 1
 - 19 Dec 2017
- Cabling Phase 2
 - 22 Jun 2018

Electronics and Cable Planning SASE2



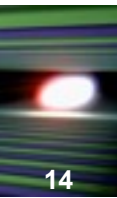
SASE1 Interlock Tests



HIBEF Compressor Chamber



Next meetings



- SASE1 Readiness (Instruments, Laser, Detectors)
 - 09:00 here
- SASE1 Readiness Dispatch
 - Mo, Wed 09:30 @ MCR
- XHEXP1 Coordination
 - Fr 30 June 08:30