

EUCALL Workshop: User Access at Advanced Laser Light Sources

User Portal GATE @ HZDR

ELI-Beamlines, 21 – 22 September 2017




HELMHOLTZ
ZENTRUM DRESDEN
ROSSENDORF

Outline

User Portal

- Basic Functionalities, useful add-ons and luxury
- Workflow
- GATE @ HZDR as an example
- Relation with the users

Demands on a User Portal

Basic functionalities:

- User registration
- Acceptance of term & conditions of access
- Confirmation regarding open access, dual use, ethical issues, etc.
- Proposal submission
- Evaluation Process
- Communication with the applicant
- Reporting of results

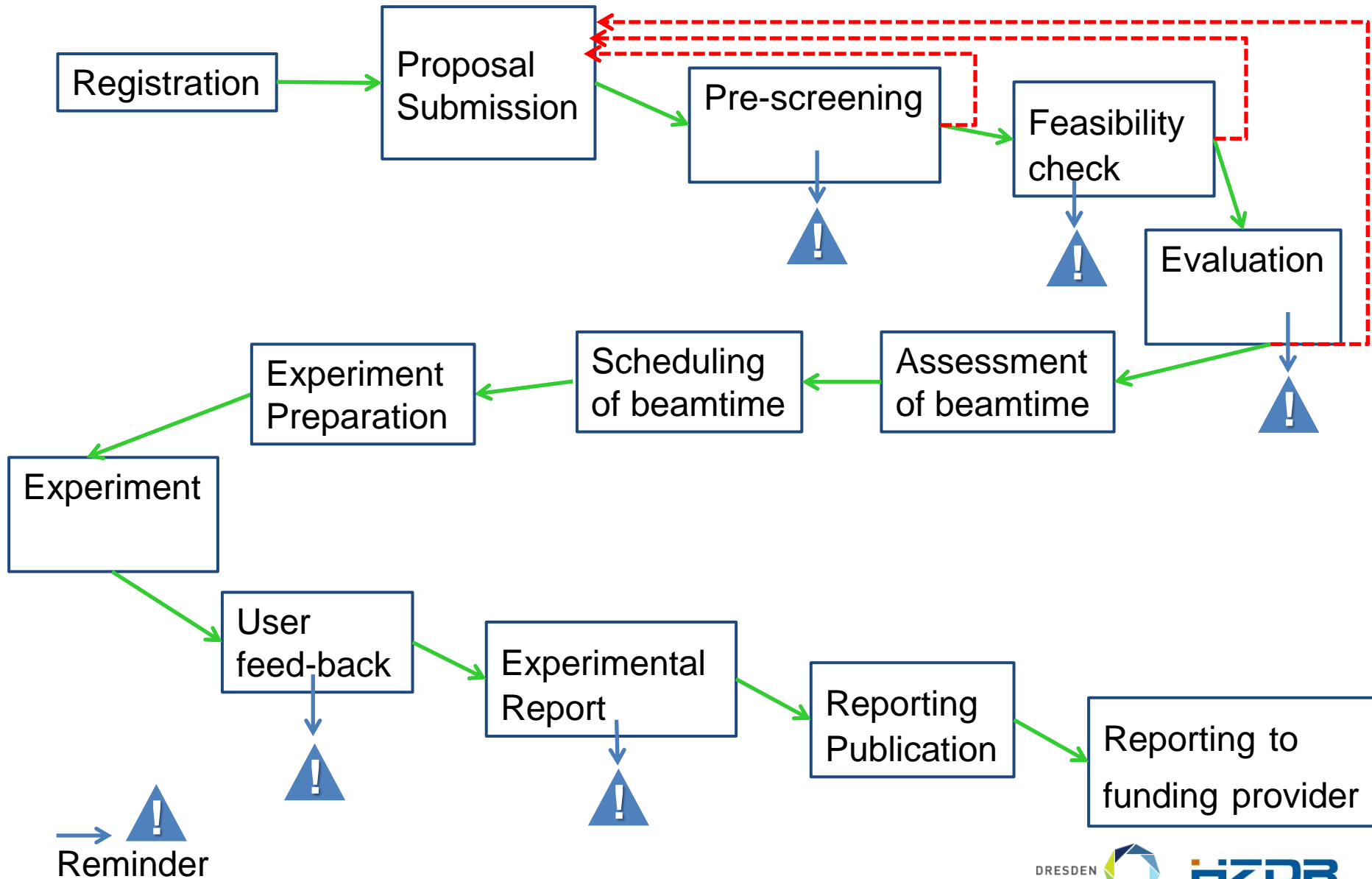
Useful add-ons:

- Application for travel support
- Preparation of Beamtime
 - ✓ Registration of additional team members
 - ✓ Radiation protection
 - ✓ Booking guesthouse
 - ✓ Visitor's card
- Statistics for Reporting to funders
- User publications

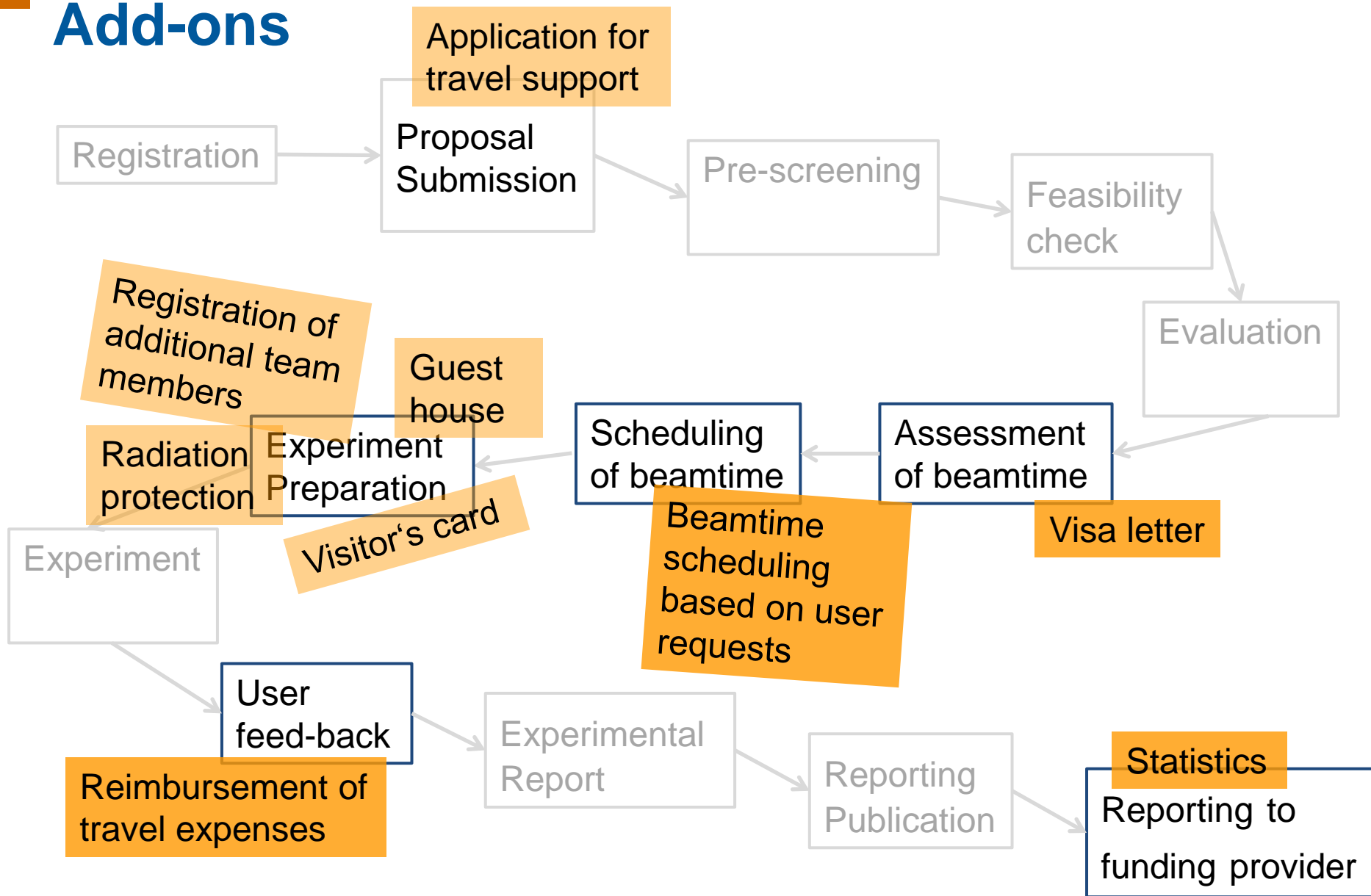
Luxury:

- Beamtime schedule based on user requests
- Reimbursement of travel expenses
- Visa letters

Work Flow




Add-ons



GATE	HZDR GATE
▼ GATE	
▼ HZDR GATE	HZDR GATE is the general access tool to the research infrastructures (RI) at HZDR, offering access to external users!
▶ Login	Users are kindly required to register in HZDR GATE in order to be able to
▶ Registration	<ul style="list-style-type: none"> • submit a proposal for beamtime at ELBE, IBC or DRACO • participate in accepted experiments at ELBE, IBC or DRACO • provide user feedback and to submit experimental reports • publish data resulting from experiments at an RI at HZDR.
▶ Lost password	
▶ Lost username	

Login

Login via umbrellalD




umbrellalD

or

HZDR GATE Login

or

Institutional Login via Shibboleth



umbrellalD

Oder wählen Sie Ihre Institution aus einer Liste:

Institution direkt selbst eingeben

- Developed by Helmholtz-Zentrum Berlin and in use for access management to BESSY II and BER II
- Adopted to requirements of HZDR in 2013/ 2014 (one FTE)
- In routine use for access to
 - ELBE – Center for High-power Radiation Sources
→ two deadlines per year in spring and fall
 - Ion Beam Center
→ continuous submission of proposals
 - DRACO laser
→ continuous submission of proposals

New Users: Registration

HZDR GATE - Barbara Schramm

Welcome to **HZDR GATE**, the webtool governing all issues related to user access to the Research infrastructures at HZDR!

Next deadline for the submission of proposals for ELBE: October 18th, 2017.
There is no deadline for IBC and for DRACO due to their rolling process!

You have ...

- ▶ 5 not submitted proposal
- ▶ 1 publications not yet assigned to the respective HZDR facility
- ▶ Any new publications?

My proposal

- ▶ Submit a new proposal
- ▶ Proposal list
- ▶ Publication list / submit publications

Personal section

- ▶ Personal data
- ▶ Connect with Institutional Login
- ▶ Change password
- ▶ Change username
- ▶ Online trainings
- ▶ Terms and conditions for user access to the experimental facilities

Referee section

- ▶ Review proposals
- ▶ Proposals per call
- ▶ Proposals
- ▶ Reports
- ▶ Referee Handbook

- ▼ GATE
- ▼ HZDR GATE
- ▶ My proposal
- ▶ New proposal
- ▶ Proposal list
- ▶ Publication list
- ▶ Referee section
- ▶ Review proposals
- ▶ Proposals per call
- ▶ Proposals
- ▶ Reports
- ▶ Referee Handbook
- ▶ Personal section
- ▶ Personal data
- ▶ Connect with Institutional Login
- ▶ Change password
- ▶ Change username
- ▶ Online trainings
- ▶ Terms and conditions for user access to the experimental facilities
- ▶ Handbook
- ▶ Request support
- ▶ Logout

- GATE
- HZDR GATE
- My proposal
- New proposal
- Proposal list
- Publication list
- Referee section**
- Review proposals
- Proposals per call
- Proposals
- Reports
- Referee Handbook
- Personal section**
- Personal data
- Connect with Institutional Login
- Change password
- Change username
- Online trainings
- Terms and conditions for user access to the experimental facilities
- Handbook**
- Request support**
- Logout**

HZDR GATE - Barbara Schramm

New proposal

General proposal data

Title *

Abstract *
max. 1000 characters

Proposal type * Scientific College *

Main research area * Scientific Category *

Funding Funding requested [Information about funding](#)

Scientific case and results expected [?](#) [example / templates \(IBC\)](#)

Scientific case and *
results expected (pdf) Keine Datei ausgewählt.
Accepted format: *.pdf, max. of 2 pages

Trans-national Access Programme

User groups from outside Germany applying for access to a beamline involved in an Integrating Activity funded by the European Commission may request financial support for their travel expenses. The request for funding from a trans-national access programme has to be indicated in the proposal form. Beamlines to which trans-national access may be requested are listed below including the corresponding EU project.

Beamlines: FELBE and TELBE

Project:



Context, eligibility and obligations:

In the framework of the trans-national access programme of the project CALIPSOplus, funded by the European Union as an integrating activity, support for travel and subsistence is offered for user carrying out experiments at accelerator-based light sources located outside the country of their home institution.

To a limited extend also users from Third countries are eligible for funding.

In publications resulting of user projects supported in this way acknowledgement of support by the European Union is mandatory using the following sentence:

The research leading to this result has been supported by the project CALIPSOplus under the Grant Agreement 730872 from the EU Framework Programme for Research and Innovation HORIZON 2020.

In addition, after the beamtime response to the Horizon2020 user survey is strongly recommended following this [link](#).

Submission of an experiment report to the facility having been used is mandatory.

Definition of proposal form

- Nationalitäten
- Adress-Templates
- **Scientists**
- Feasibility check
- Feedback submission
- **SSP**
- SSP-Sitzungen
- Laufzeit Proposalrunde
- Referee-Proposal-Zuweisung
- Referee-Rankings
- Beamtime Allocation
- Referees
- Colleges
- **Beamtime**
- Durchführungstermine
- Experimentatoren
- Förderung pro Experimentator
- **Admin**
- Preferences
- Settings
- E-Mail-Templates
- Contract Proposal-Eingabe
- Förderprogramme
- Infotexte
- externe Datenweitergabe
- externe Messgastgruppen
- Proposal-Formular-Definition
- Feedback-Formular-Definition
- Wissenschaftliches Nutzer-Profil

8				Textfeld	<input type="checkbox"/>	Breite <input type="text"/> Default <input type="text"/>	Prüfkriterien Sichtbarkeit (pro Proposaltyp)	
9	Consortium	Project consortium		Zwischenüberschrift		Project Consort...	Sichtbarkeit (pro Proposaltyp)	
10	Spokes person	Spokes person for		Coproposer-Auswahl	<input checked="" type="checkbox"/>		Sichtbarkeit (pro Proposaltyp)	
11				Umbruch			Sichtbarkeit (pro Proposaltyp)	
12	HZDR Partner	Collaborating partn		Coproposer-Auswahl	<input type="checkbox"/>		Sichtbarkeit (pro Proposaltyp)	
13				Umbruch ohne Farbwechsel			Sichtbarkeit (pro Proposaltyp)	
14	comment HZDR pa	comment HZDR pa		Text		If your project...	Sichtbarkeit (pro Proposaltyp)	
16				Umbruch			Sichtbarkeit (pro Proposaltyp)	
18	Project character	Characterization of		Zwischenüberschrift		Characterizatio...	Sichtbarkeit (pro Proposaltyp)	
20	confirm	confirm		Text		I confirm that ...	Sichtbarkeit (pro Proposaltyp)	
21	confirmation	confirmation		Checkbox	<input checked="" type="checkbox"/>		! Prüfkriterien Sichtbarkeit (pro Proposaltyp)	
22				Umbruch			Sichtbarkeit (pro Proposaltyp)	
25	project type	Type of project		Popup	<input type="checkbox"/>	Pilot, Short te...	Prüfkriterien Sichtbarkeit (pro Proposaltyp)	
26				Umbruch			Sichtbarkeit (pro Proposaltyp)	
27	PhD Thesis involve	Project is essential		Popup	<input type="checkbox"/>	yes, no...	Prüfkriterien Sichtbarkeit (pro Proposaltyp)	

ELBE - Beamline and beamtime ? [Device overview](#)

Beamline *

Preferred local contact *

Mode of operation *

Requested beamtime * Shifts (12 hours each)

Operation schedule

Preferred dates 1) - 2) -

Unfeasible dates 1) - 2) -

Experimental plan ? [example / templates \(IBC\)](#)

Experimental plan *
(pdf) Keine Datei ausgewählt.

Project Consortium

Spokes person for the proposal *

Collaborating partner from HZDR

If your project is a collaboration with scientist(s) from HZDR, the HZDR partners need to be mentioned as co-proposers (previous step) a dropdown menu here above. Please note however that the local expert/ beamline scientist who will assist for the beamtime, needs not to be mentioned here. Therefore please mention him/her here only in justified cases!

Characterization of the project

I confirm that the research presented in this proposal is neither funded by industry nor will the results directly be made available

confirmation *

Type of project

Project is essential part of PhD thesis If yes, please give name of PhD student

Project is essential part of reviewed research grant If yes, please specify



Definition of email templates

intiolexic

externe Datenweitergabe

externe Messgastgruppen

Proposal-Formular-
Definition

Feedback-Formular-
Definition

Wissenschaftliches Nutzer-
Profil

Wissenschaftliche
Kategorien

Forschungsgebiete

EU-Kategorien

Grand Challenges

Institutsmerkmale

Sicherheitsgruppen

Mail archive

Statistic

Handbooks

Personal settings

Preview message options

Proposal

+ message preview

Text template parts for mail template Feasibility Trigger

Change message text part?

Sort	Name	Text	is valid for	
1	trigger feasibility check I	<p>Dear Colleague,</p> <p>a new proposal has been submitted for the ELBE beamline to which you have been assigned as local expert. Please check this proposal for feasibility at your earliest convenience but not later than #DLFEAS#.</p> <p>To this end, please log into the HZDR website.</p> <p></p> <p>Direct access to this particular proposal: https://www.hzdr.de/db/IGate.Admin.Feasibility?xid=#PID#</p> <p>Overview: https://www.hzdr.de/dh/IGate.Admin.Feasibility</p> <p></p> <p><input type="button" value="save"/></p>	<input checked="" type="checkbox"/> ELBE <input type="checkbox"/> IBC <input type="checkbox"/> DRACO	
2	trigger feasibility check I	<p>Dear Colleague,</p> <p>a new proposal has been submitted. Please check the proposal for feasibility within the next 2 days.</p> <p>Thank you very much in advance.</p>	<input type="checkbox"/> ELBE <input checked="" type="checkbox"/> IBC <input type="checkbox"/> DRACO	

Email templates

Contract Proposal-Eingabe

Infotexte

externe Datenweitergabe

externe Messgastgruppen

Proposal-Formular-
Definition

Feedback-Formular-
Definition

Wissenschaftliches Nutzer-
Profil

Wissenschaftliche
Kategorien

Forschungsgebiete

EU-Kategorien

Grand Challenges

Institutsmerkmale

Sicherheitsgruppen

Mail archive

[back to email template overview](#)

Preview message options

Proposal 1036 [view](#)

message preview

HZDR Proposal 17201036-ST submitted, please perform feasibility check

from: gate-admin@hzdr.de

to:

Dear Colleague,

a new proposal has been submitted for the ELBE beamline to which you have been assigned as local expert. Please check this proposal for feasibility at your earliest convenience but not later than 02.11.2017. To this end, please log into the HZDR website.

- Direct access to this particular proposal: <https://www.hzdr.de/db/!Gate.Admin.Feasibility?xid=1036>
- Overview: <https://www.hzdr.de/db/!Gate.Admin.Feasibility>

Please note: a restricted access to the GATE-Admin tool is provided to you in order to enable the feasibility check. Therefore the login to the HZDR website is required.

Thank you and best regards,
Barbara Schramm
Access management ELBE

„Open to the World“

Important characteristics of a User portal:

- ✓ Easy to find
- ✓ Easy to use
- ✓ Convenient



- ✓ Use a federated identity system
→ Umbrella ID www.umbrellaid.org
- ✓ Link to wayforlight (www.wayforlight.eu),
Lightsources.org and others
- ✓ Single entry point to all ELI facilities/ all (optical) laser facilities?



Thank you for your attention!

