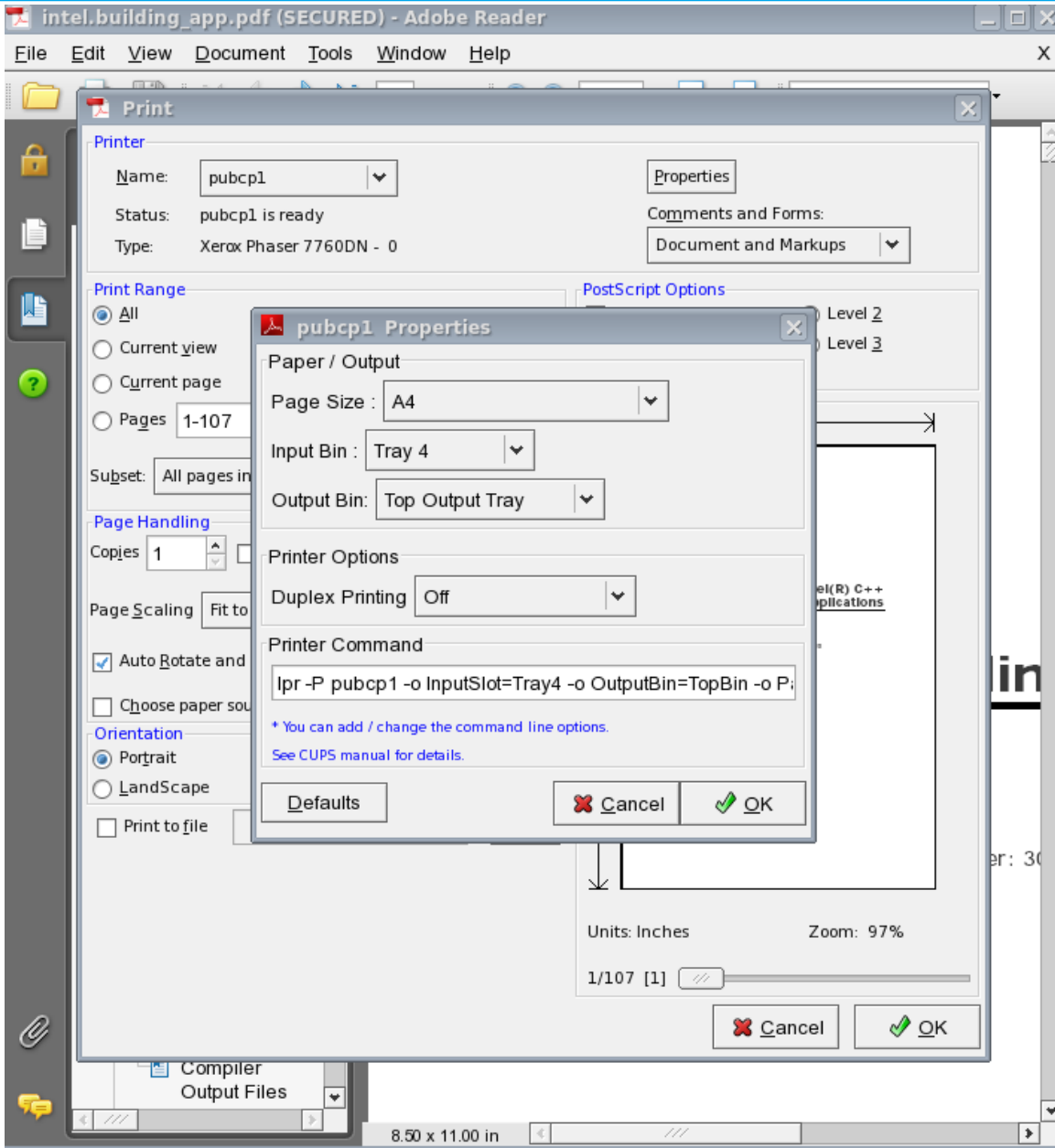


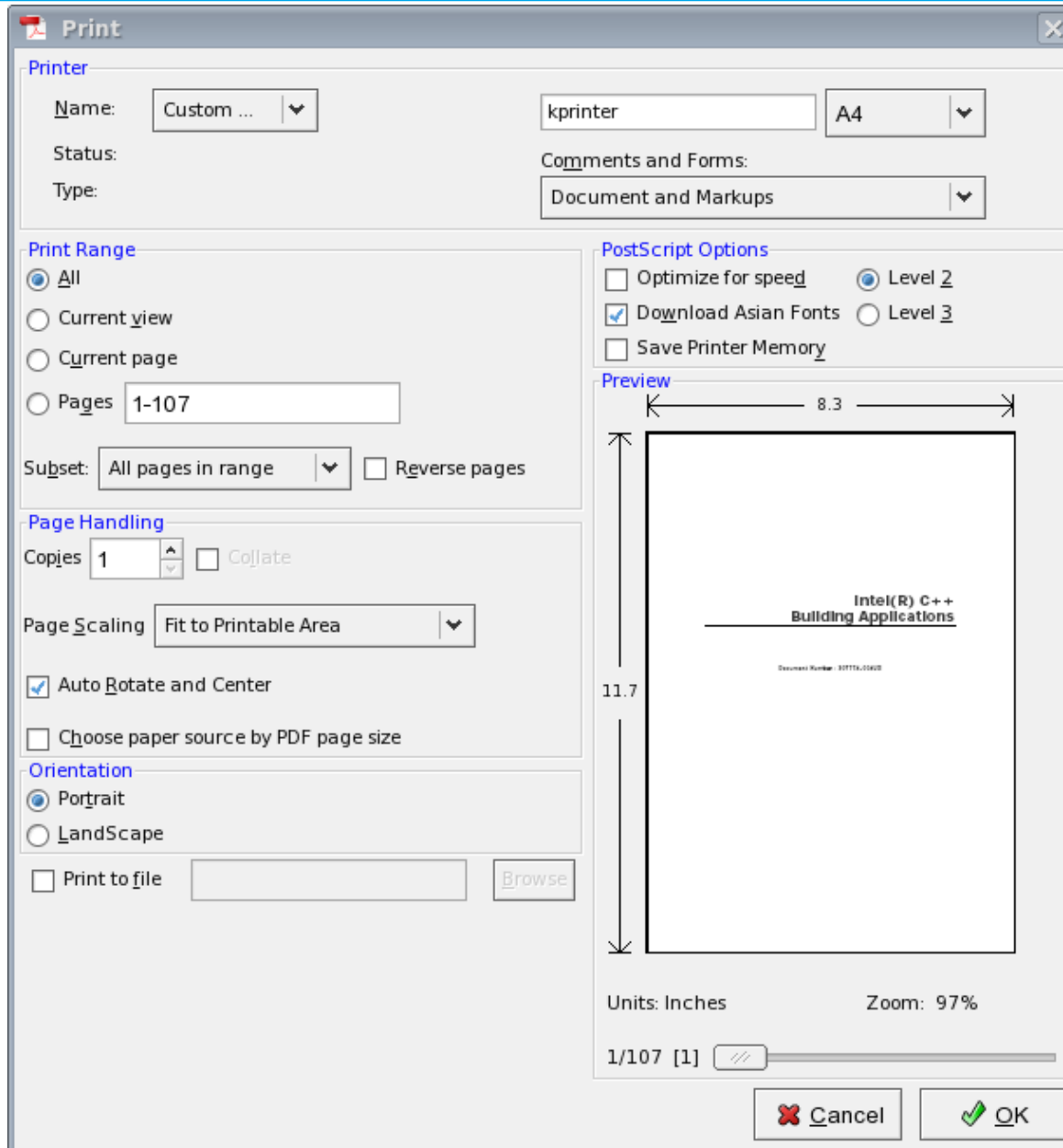
from a users point of view ...

CUPS – Applications - acroread



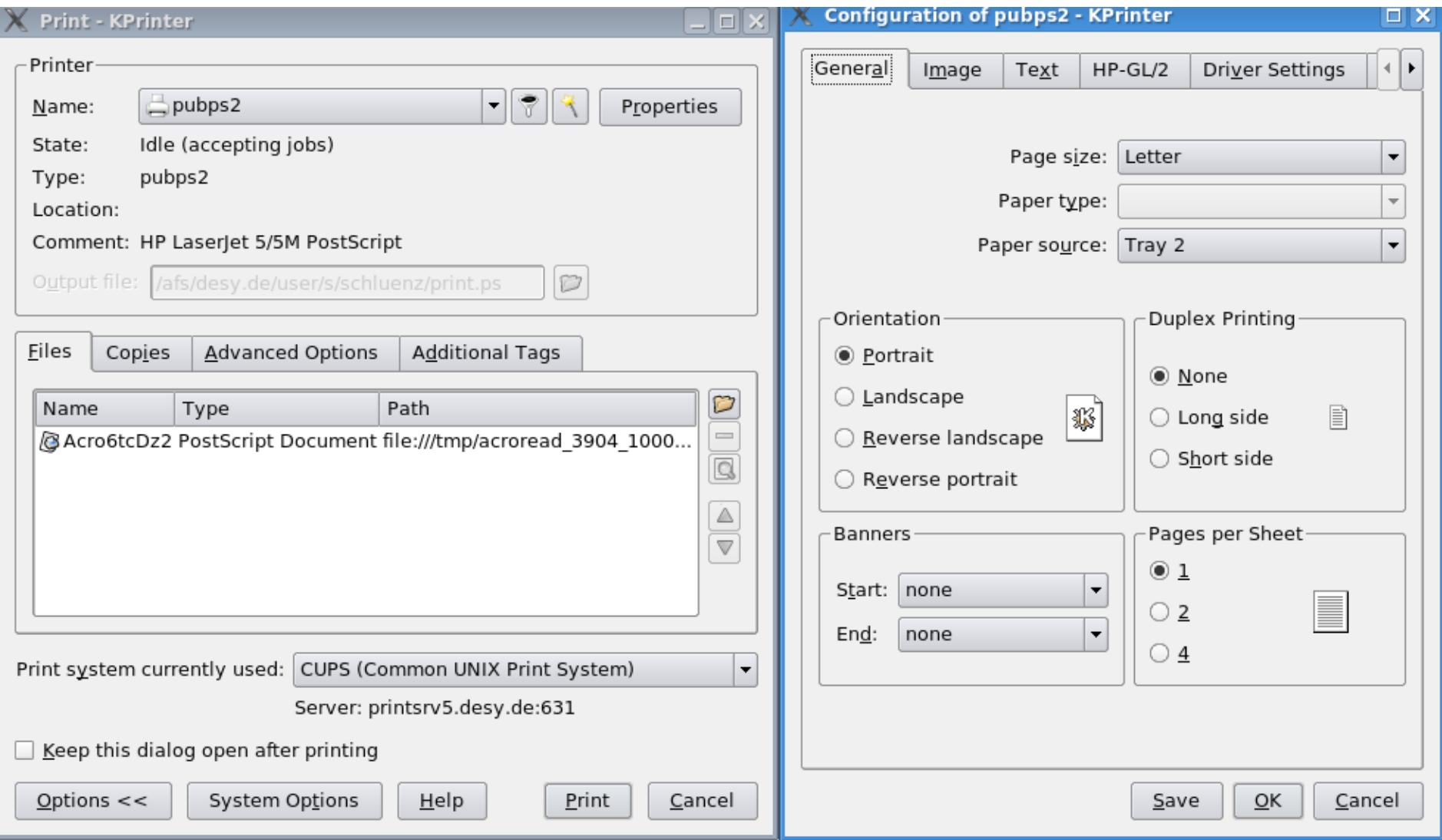
- GTK print backend
- recognizes printer features
- command line options
- forgets the settings
- Firefox / OpenOffice similar

CUPS – Applications - kprinter



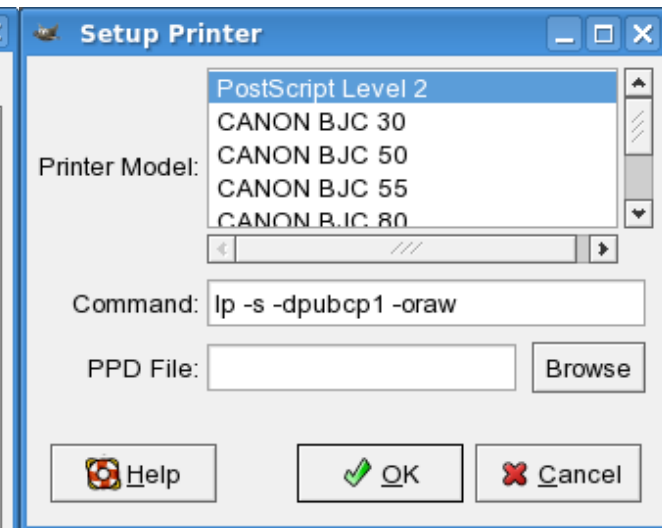
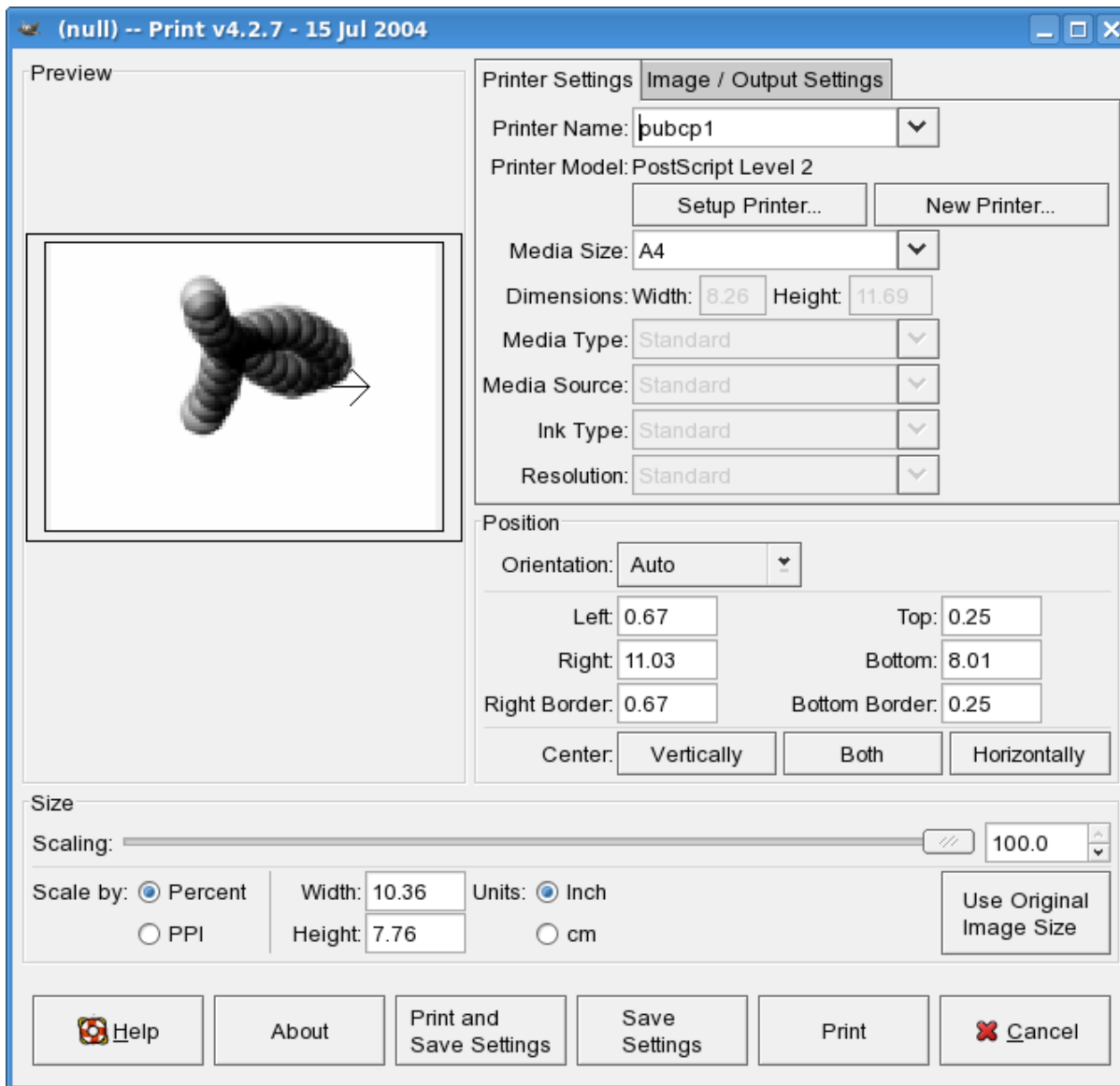
- can use kprinter as printer gui

CUPS – Applications - kprinter

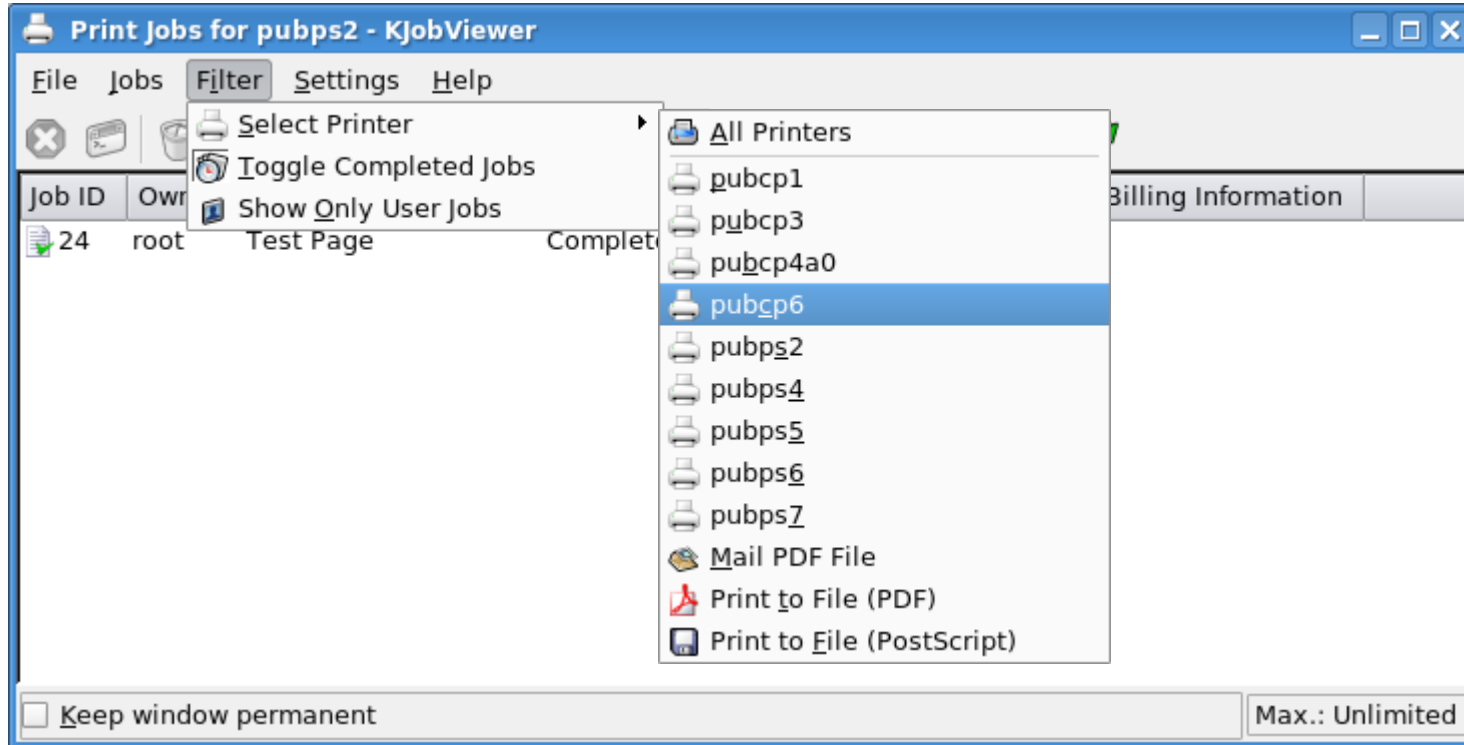


- easily set printer and printer options ... works for most other applications as well





- Gimp (and some others) are special
- Options
 - Command line
 - or use kprinter



- User can see jobs, hardly delete them
- won't work for huge number of printers

Select Server via ~/.cups/client.conf:

```
ServerName cups-hasy1ab
```

Most applications need a restart to recognize changes

Set printer options via lpoptions

```
lpoptions -p pubcp1 -o Duplex=false  
lpoptions -d pubps2
```

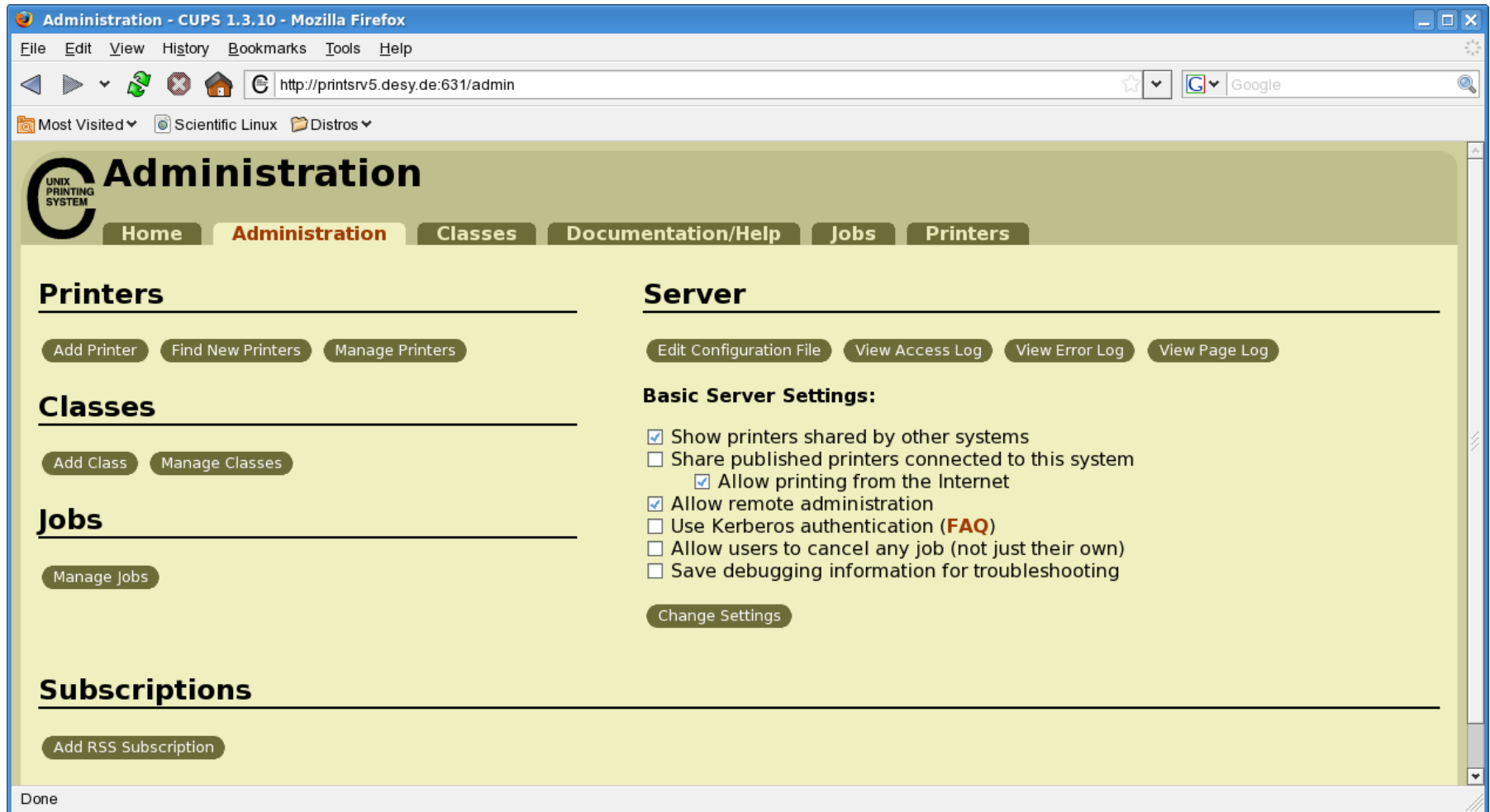
← Printer options
← Default printer

or edit .lpoptions (SL4) / .cups/lpoptions (SL5)


Show printer info via

```
lpoptions -h cups-desy -p pubcp1 -l  
lpstat -h cups-it -v
```

← Printer options
← Available printer



- Individual Server for each group (+ generic server)
 - who administrates ?



Printers - CUPS 1.3.10 - Mozilla Firefox

File Edit View History Bookmarks Tools Help

http://printsrv5.desy.de:631/printers/

Most Visited Scientific Linux Distros

Printers

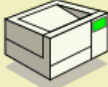
Home Administration Classes Documentation/Help Jobs **Printers**

Search in Printers: Search Clear

Showing 9 of 9 printers.

Sort Descending

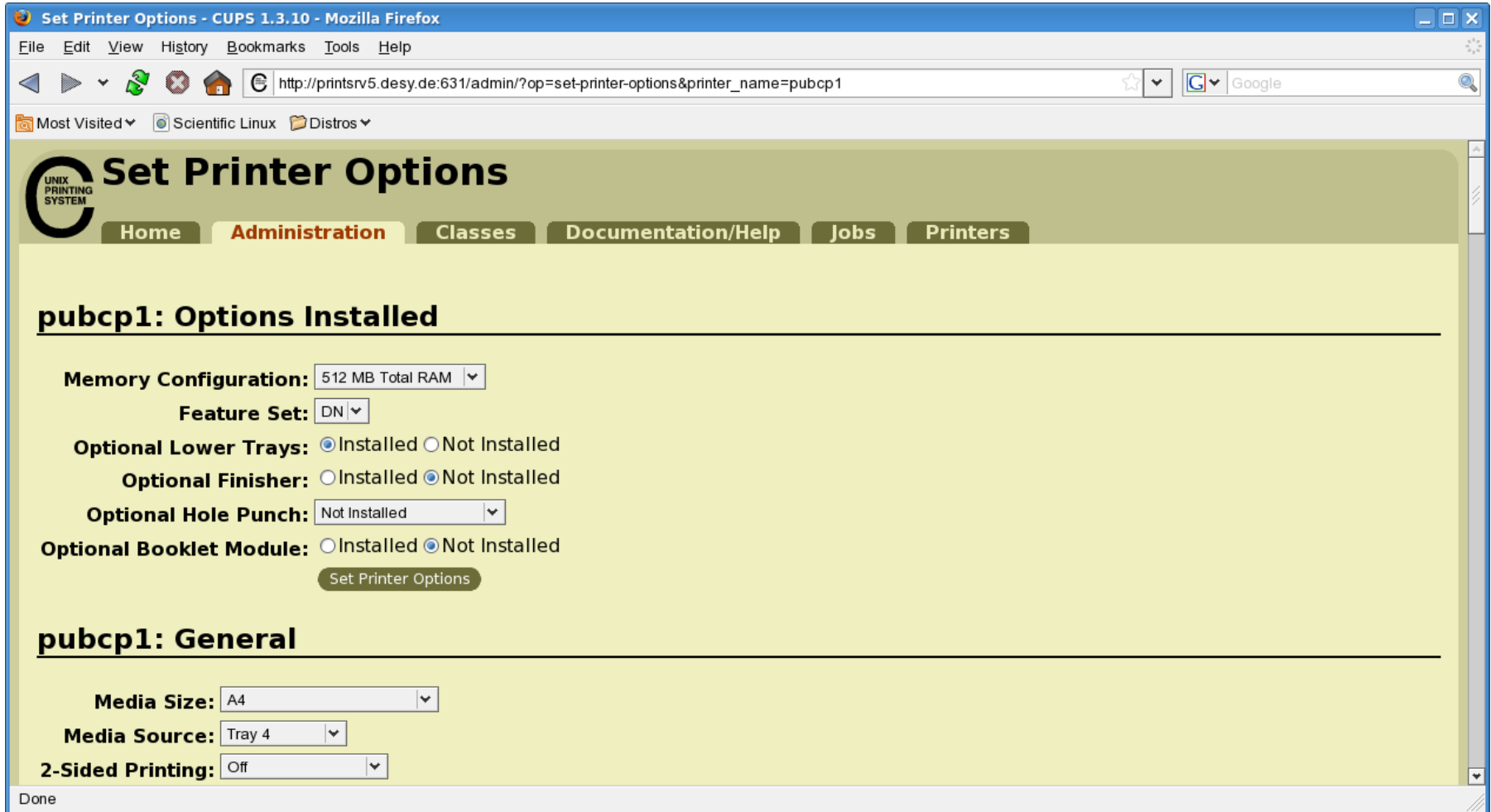
pubcp1

 **Description:** pubcp1
Location: 2a/Pool
Printer Driver: Xerox Phaser 7760DN
Printer State: idle, accepting jobs, published.
Device URI: lpd://spool-lpr/pubcp1

Print Test Page Stop Printer Reject Jobs Move All Jobs Cancel All Jobs Unpublish Printer Modify Printer Set Printer Options Delete Printer

pubcp3

- Adding / Modifying printer rather easy
 - PPD's need to be local !?



Set Printer Options - CUPS 1.3.10 - Mozilla Firefox

File Edit View History Bookmarks Tools Help

http://printsrv5.desy.de:631/admin/?op=set-printer-options&printer_name=pubcp1

Most Visited Scientific Linux Distros

Set Printer Options

Home Administration Classes Documentation/Help Jobs Printers

pubcp1: Options Installed

Memory Configuration: 512 MB Total RAM

Feature Set: DN

Optional Lower Trays: ☒ Installed ☐ Not Installed

Optional Finisher: ☐ Installed ☒ Not Installed

Optional Hole Punch: Not Installed

Optional Booklet Module: ☐ Installed ☒ Not Installed

Set Printer Options

pubcp1: General

Media Size: A4

Media Source: Tray 4

2-Sided Printing: Off

Done

- Default setup for individual printer
 - Need sensible definitions → no printout (or duplex on transparencies)

- 🐛 Restarting a cups server can take a while
 - 🐛 Cups visits each printer to verify its status
- 🐛 Printing Applications will freeze until the server is back up
 - 🐛 Takes 10 minutes for the complete list
- 🐛 Applications like firefox or acroread quest server for port and IP via DNS
 - 🐛 Port mapping via F5 fails in such cases

- 🐛 Setting server via `~/.cups/client.conf` not possible
- 🐛 Fails to handle large number of printers (1 connection per printer!)
 - 🐛 Bad for the server (and other users)
 - 🐛 **Very** slow
- 🐛 Some applications don't recognize printer options

- 🦉 Still need to set PPD's / printer options properly
- 🦉 File type recognition / filter possibly need adjustment
- 🦉 Setting up different server not final
- 🦉 no information about performance
- 🦉 expect the cups server to be operational by ?????
 - 🦉 announcement

- 🦉 Start with new SL 5.3 installations / upgrades
- 🦉 SL4 possibly never