

Renovating Building 1

(Dates are rough estimates. Don't rely on them !)

Phase 2

1/2010

7/2010

Phase 5

7/2011

1/2012

Phase 4

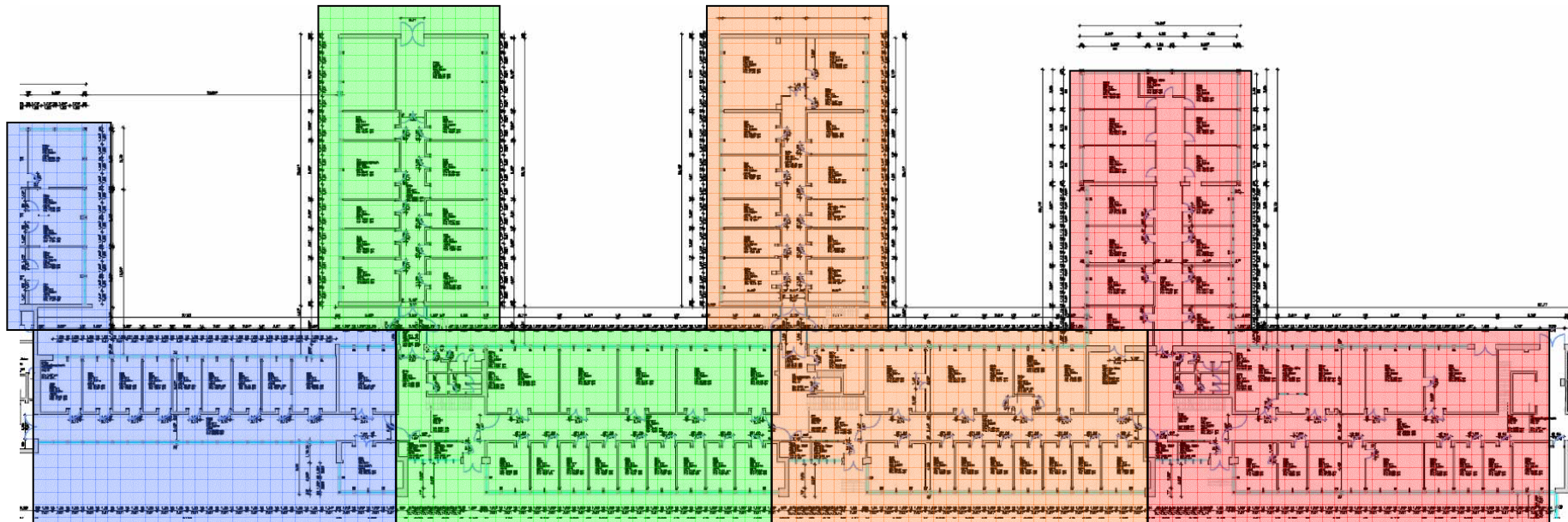
1/2011

7/2011

Phase 3

7/2010

1/2011



CMS temporary offices Building 66

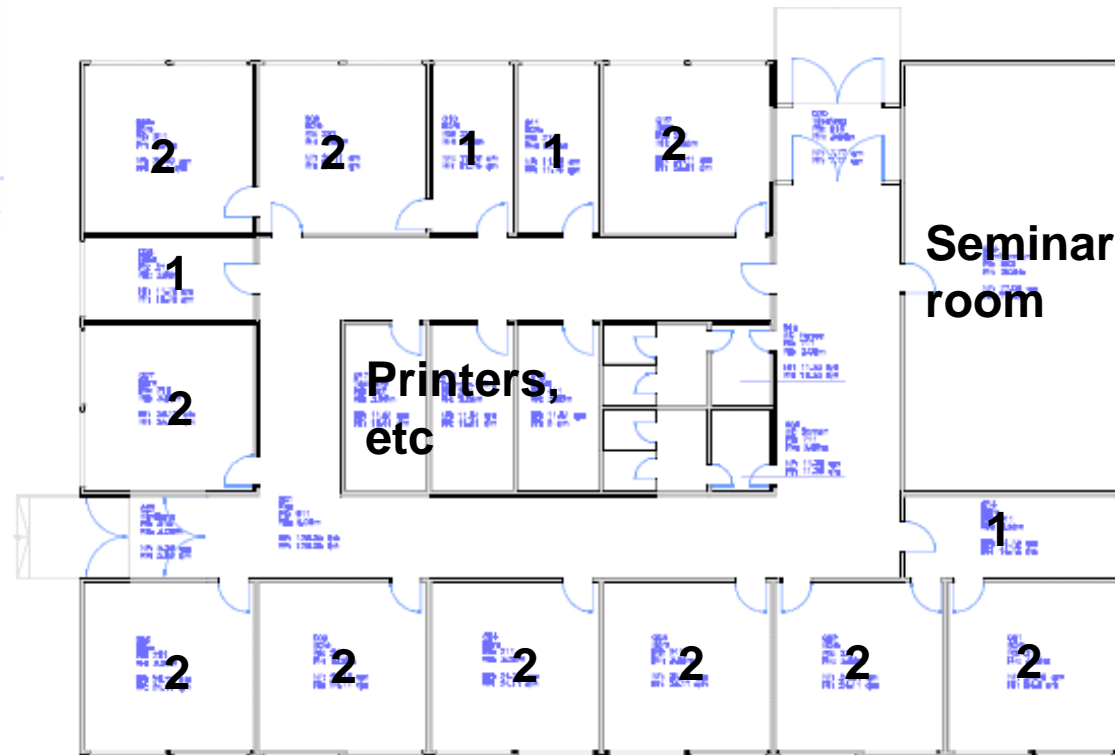
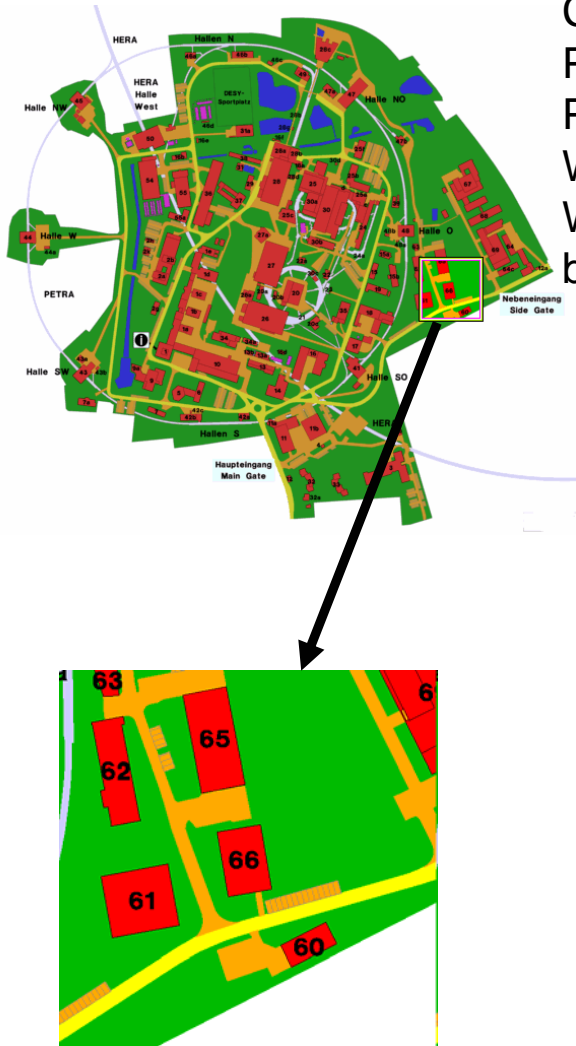
CMS offices affected in phases 1 – 4

Phase 1 : only 1 office (Dirk & Alexander moved already)

Phase 2 - 4 : not enough space for everybody in building 1

Will use building 66 as overflow (starting ~ Feb 2010)

With current planning CMS offices finished with phase 4
by ~ August 2011 all CMS back in Bldg 1



$4 \times 1 + 10 \times 2 = 24$ persons + seminar room, printer, etc

moving CMS

We will try to minimize the movements
Everybody will move at least once
Nobody needs to move more than twice

We try to minimize the time in temporary offices

You phone number will move with you (but not the phone)
(shared phone numbers obviously not in all cases)
Old analog phones will be replaced by IP phones (easier to move)

Your PC, desk and shelf usually move with you
(Unless the PC or furniture is too old)

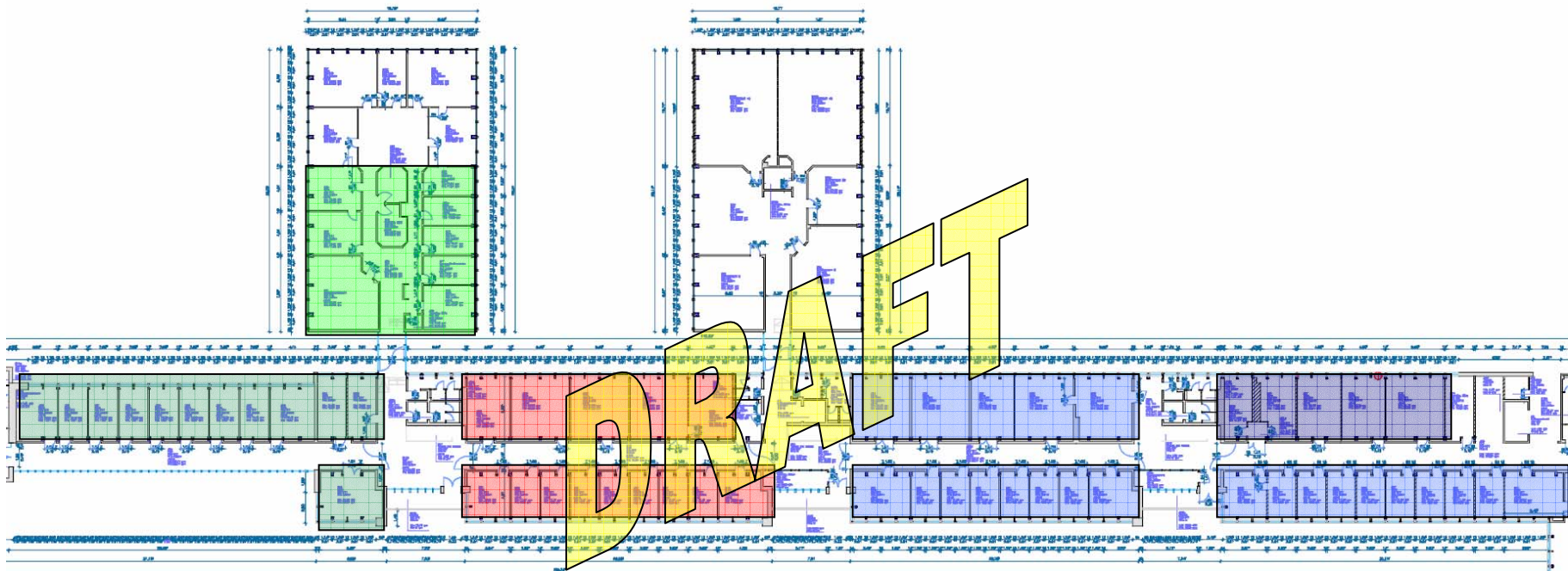
The date for moving will be fixed at least 4 weeks in advance
You will store your belongings in boxes provided in advance
Moving will be done in 1 day
If needed we will store desks/boxes etc in a temporary storage

WARNING

What ever is left in the office after all current users have left will be disposed !

In case of specific needs or questions please contact me

CMS in Building 1 & 1a, 1st floor



CMS

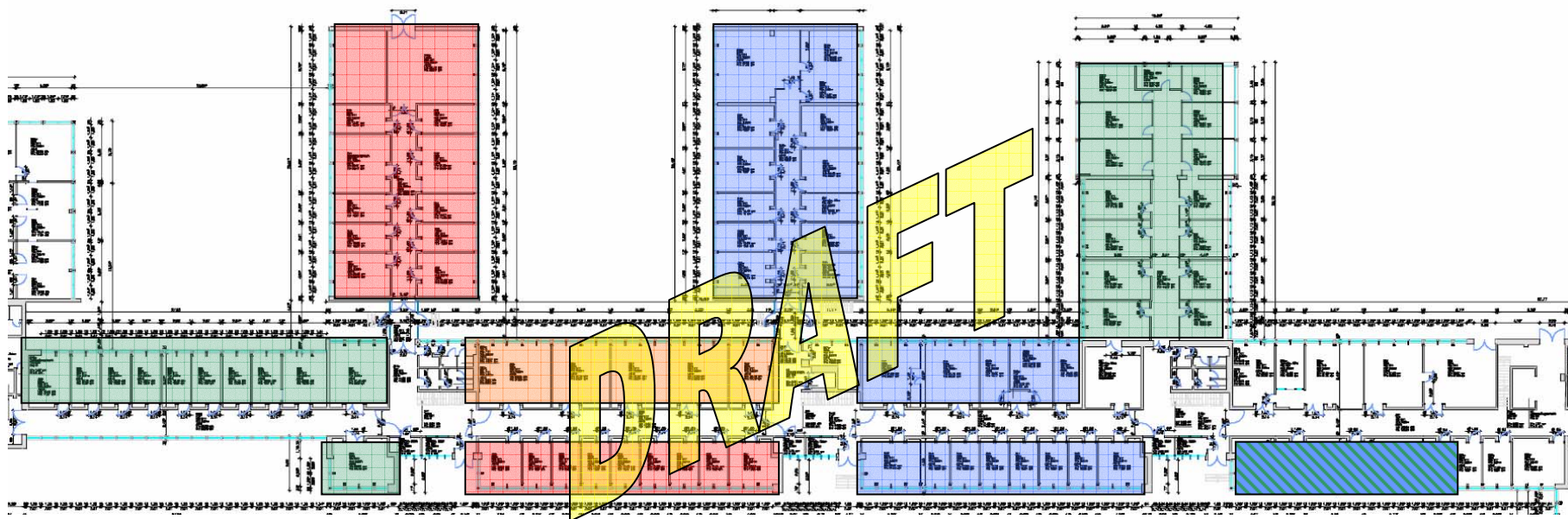
CMS Centre

Atlas

Ana Cen

H1

CMS in Building 1 & 1a, ground floor



CMS

Atlas

Zeus

Atlas Centre