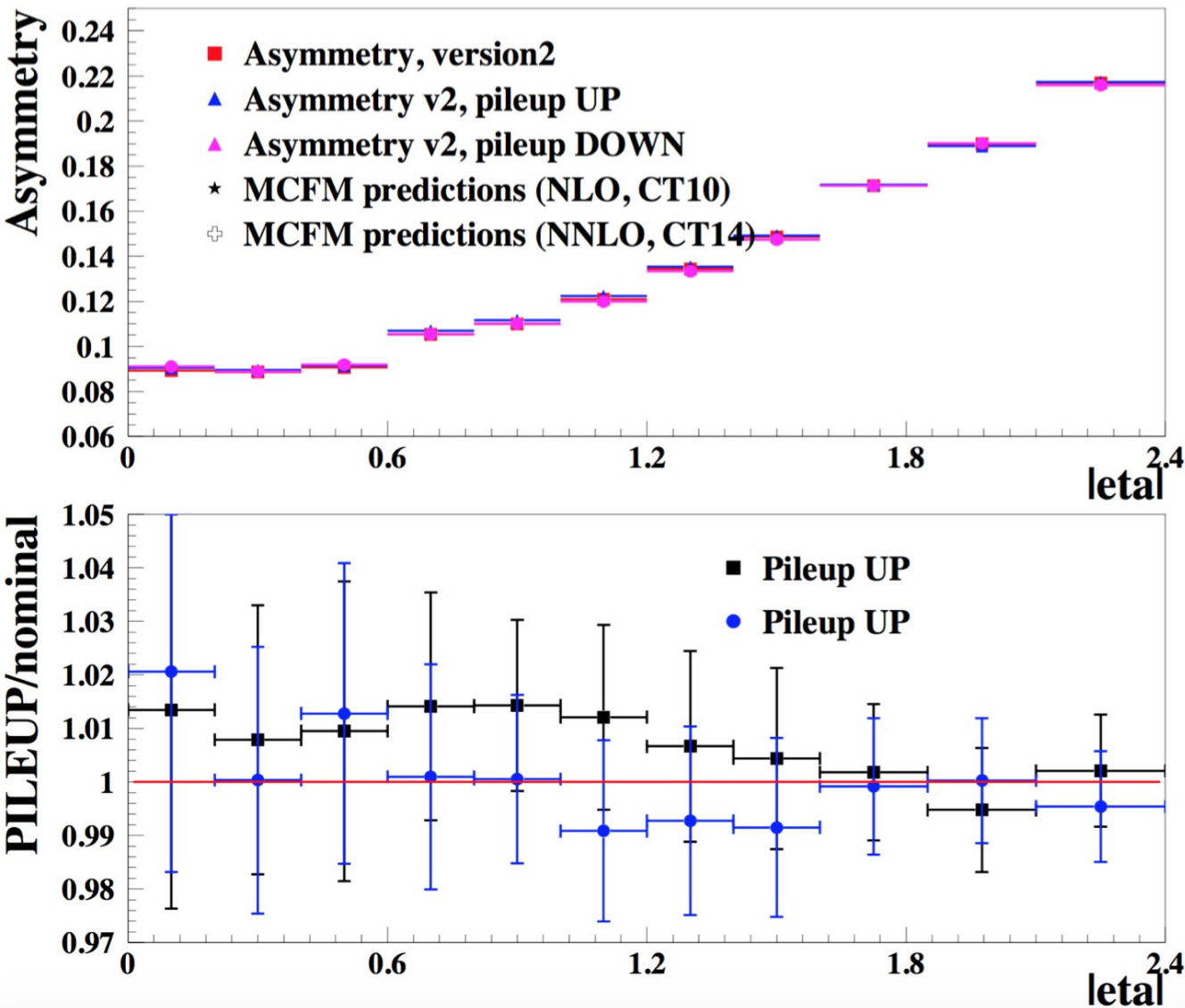


Asymmetry - systematic uncertainty from pileup correction

V. Danilov, K. Wichmann

Asymmetry

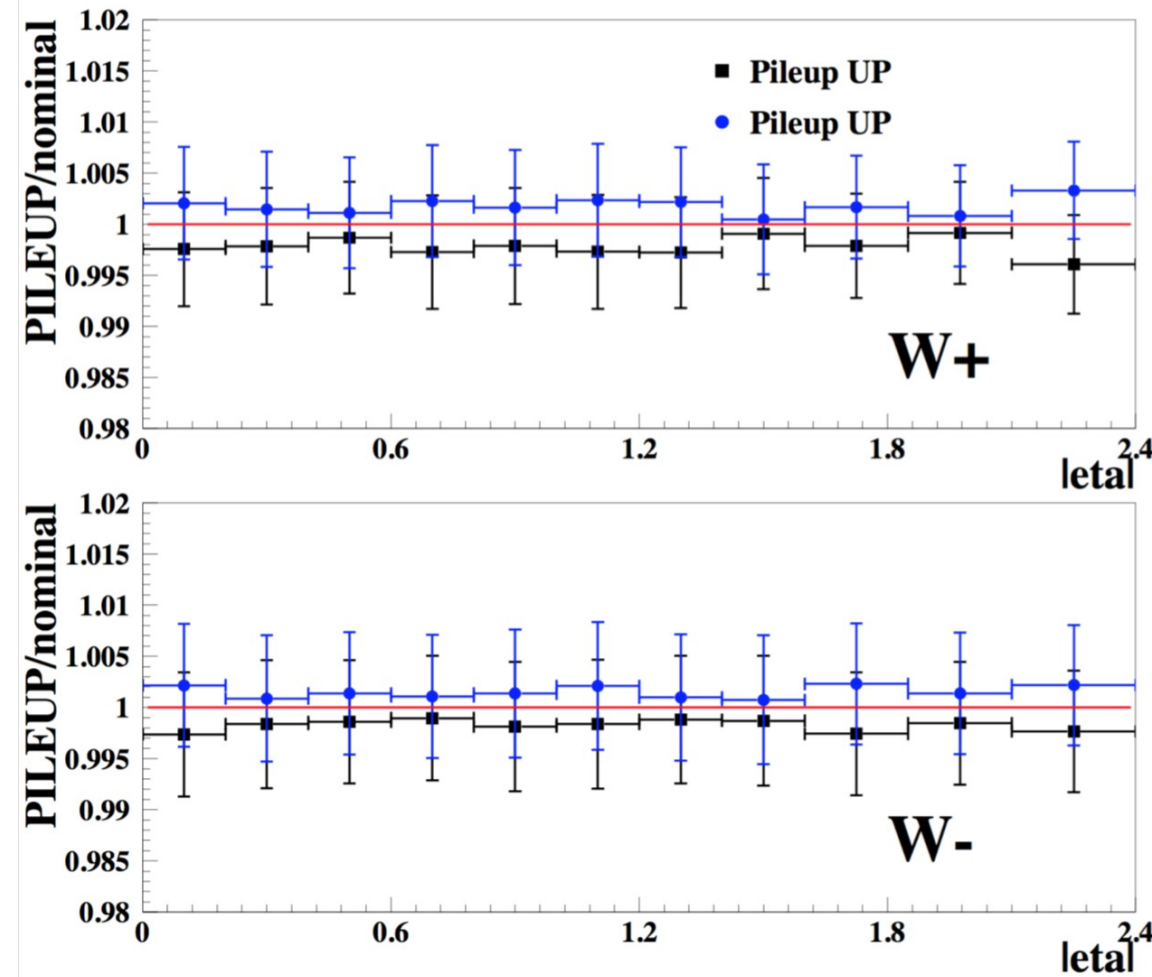
Asymmetry 13 TeV



- Uncertainty from pile up on asymmetry up to ~1-2%
- From the inclusive analysis it's ~0.4%
- We are a bit high, try to find out why

Acceptance

Acceptance 13 TeV



- Acceptance uncertainty is $\sim 0.2\text{-}0.3\%$ \rightarrow small enough
- Is it coming from the fit and estimated yields?
- Our inclusive calculations give on asymmetry:
 - Up: + 0.7%
 - Down: + 0.1%
- On acceptance
 - $\pm \sim 0.2\%$
- Need to look into the fit