

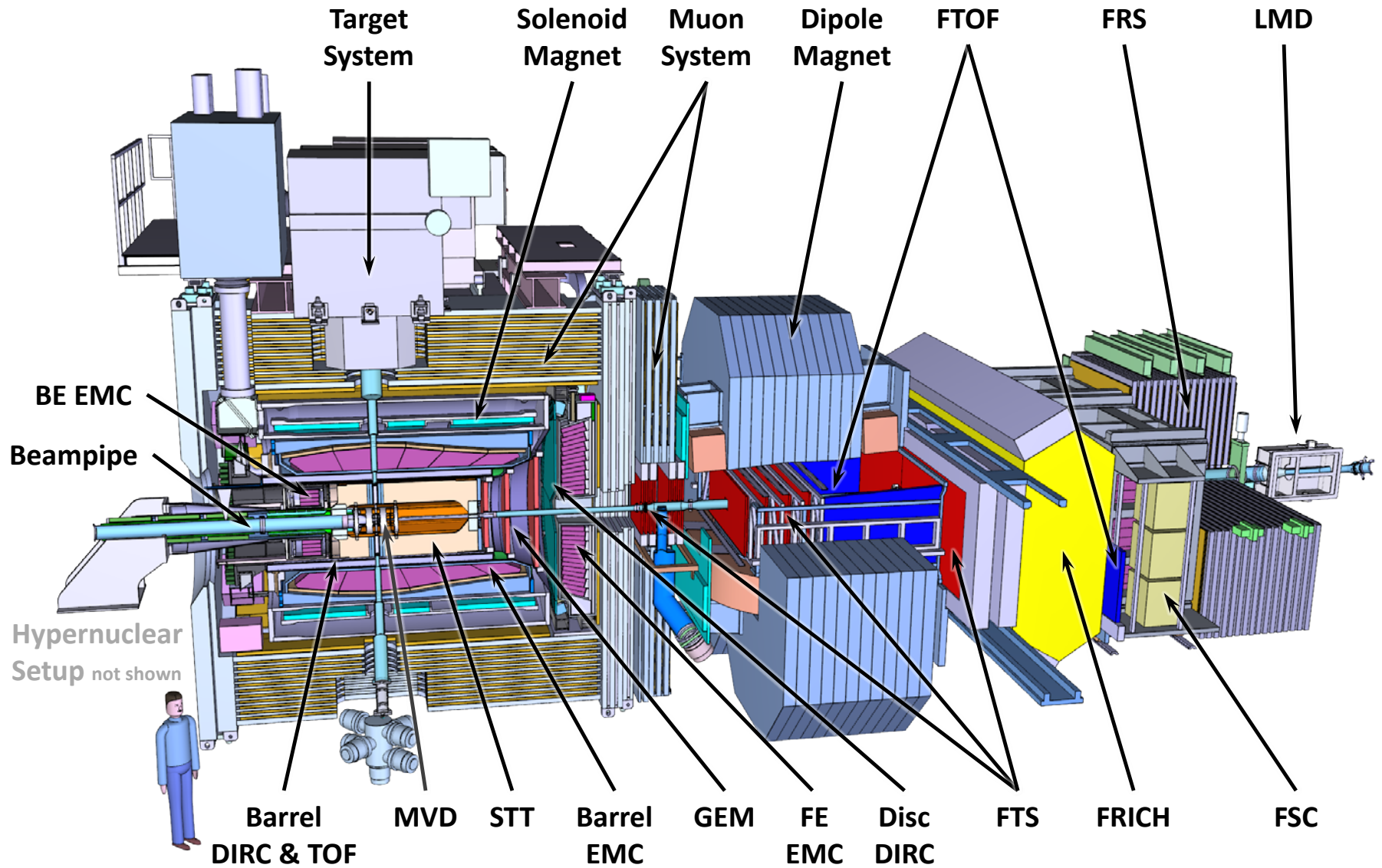


Plans for PANDA

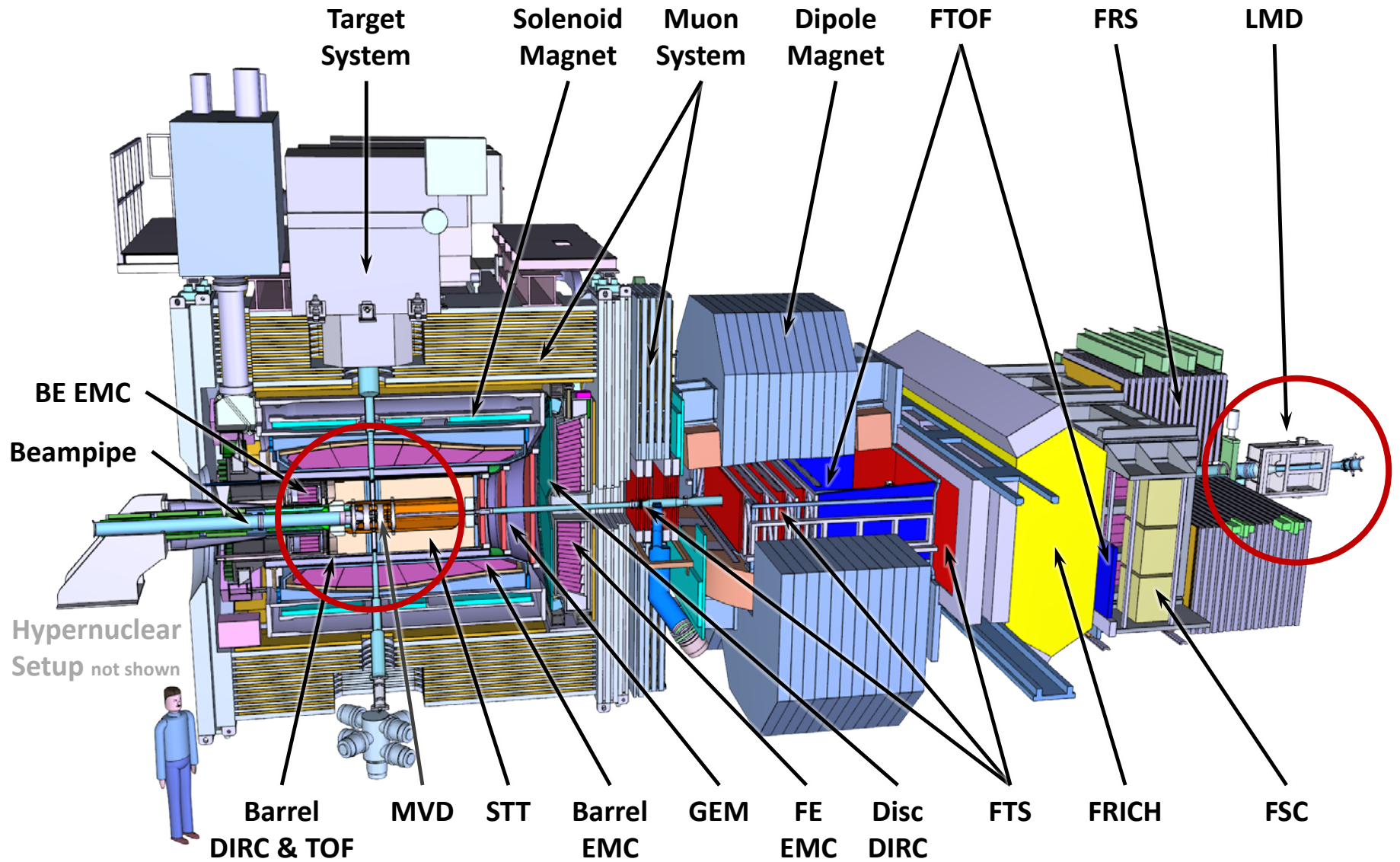
HV-MAPS Meeting
February 14, 2019

Miriam Fritsch
Ruhr-Universität Bochum

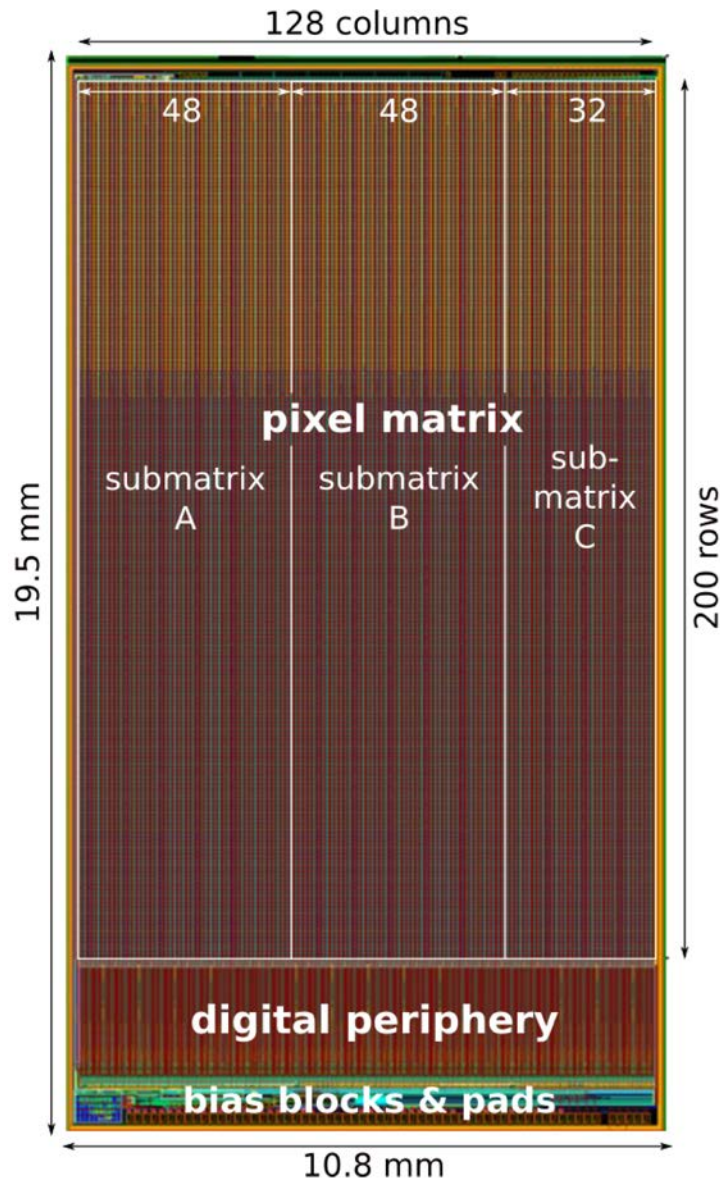
PANDA Detector



PANDA Detector



MuPix8 – First large-sized sensor



Active area 16.2 mm × 10.2 mm

Production on **substrates** with different resistivities

Separation of **pixel matrix**

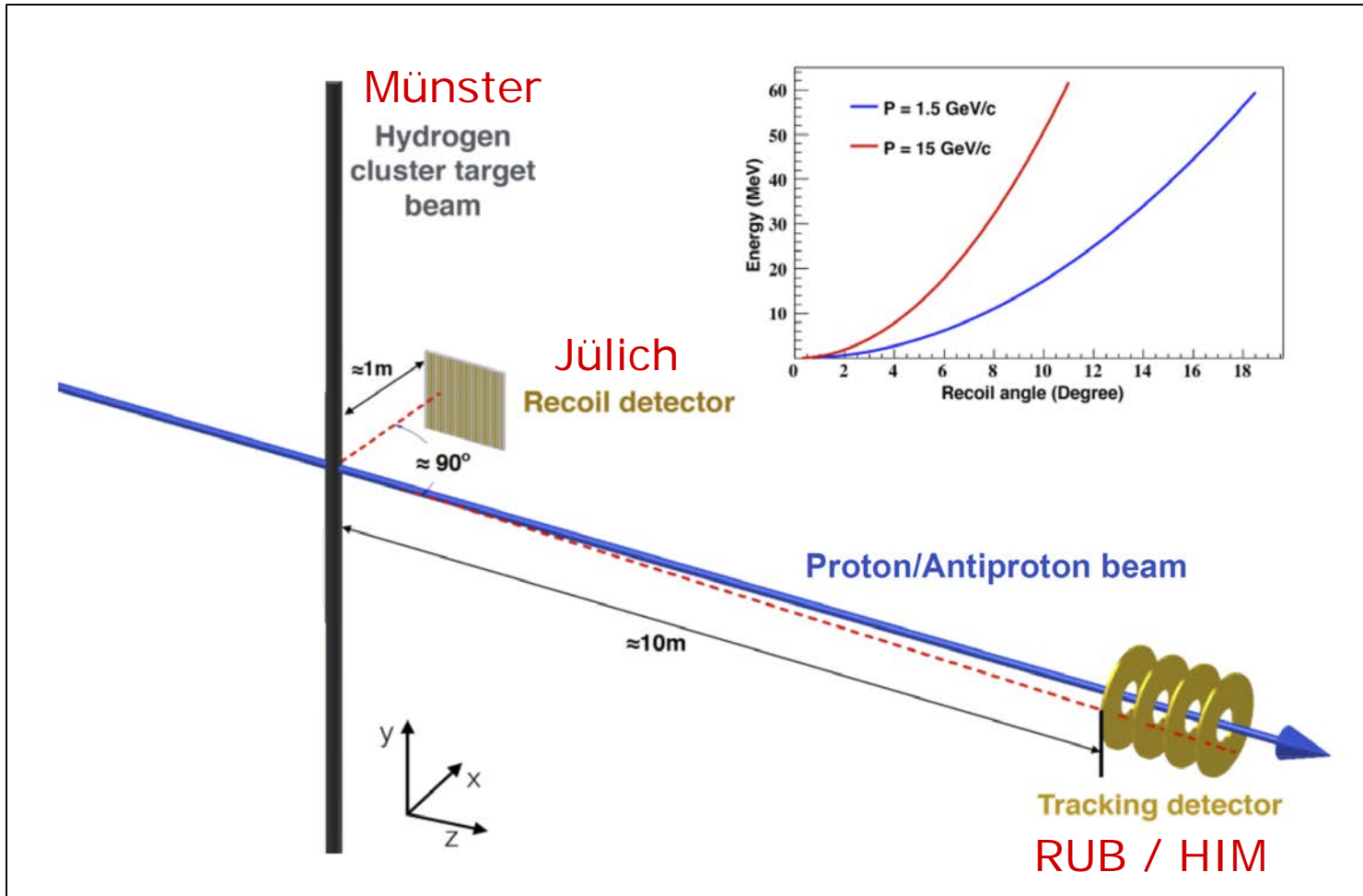
Voltage or current mode signal transmission

Amplifier output available

Expected radiation hardness

$$5 \times 10^{15} n_{\text{eq}}/\text{cm}^2$$

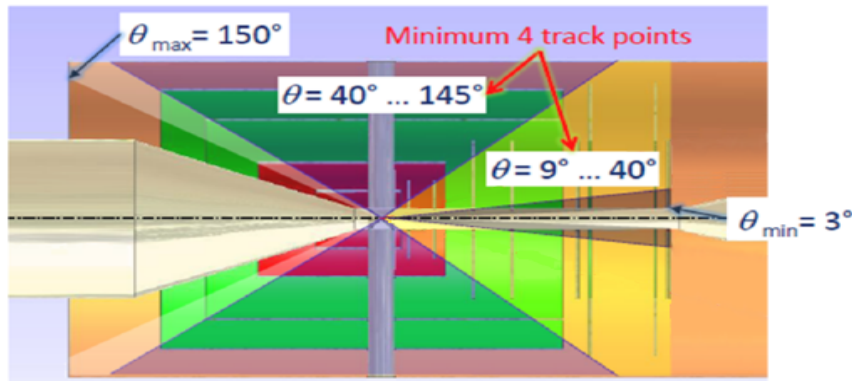
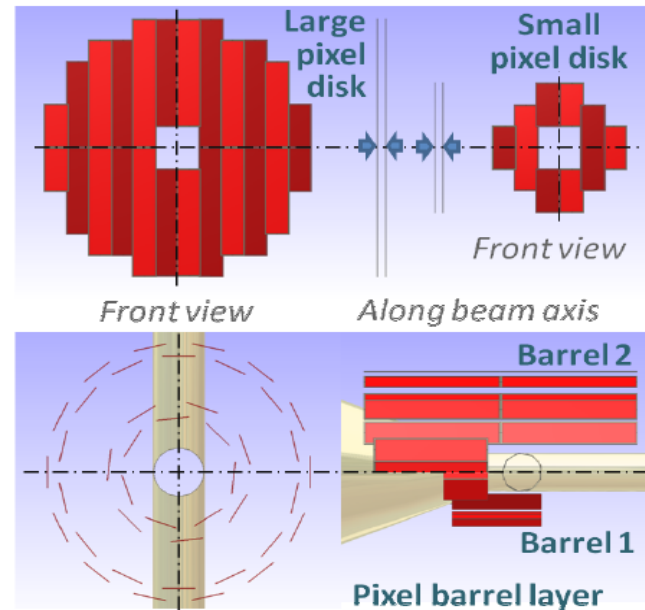
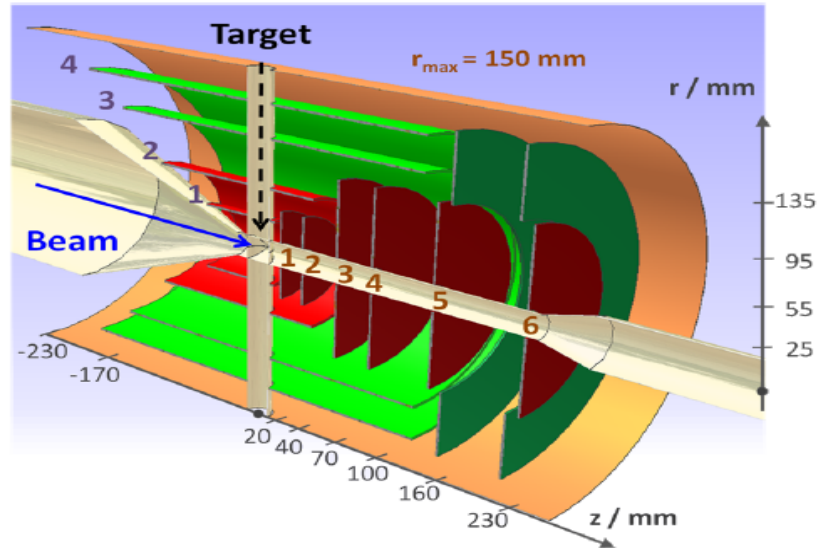
Huagen Xu



Measurement of $d\sigma/dt$ of elastic **antiproton-proton** scattering with high precision by measuring **both tracks**

Pixel for PANDA MVD

Design with Hybrid pixel and Micro strip sensors



~ 400 Sensors

Time resolution < 10ns

dE/dx for spatial resolution

Smaller pixel size