



**HELMHOLTZ  
ZENTRUM BERLIN**  
für Materialien und Energie

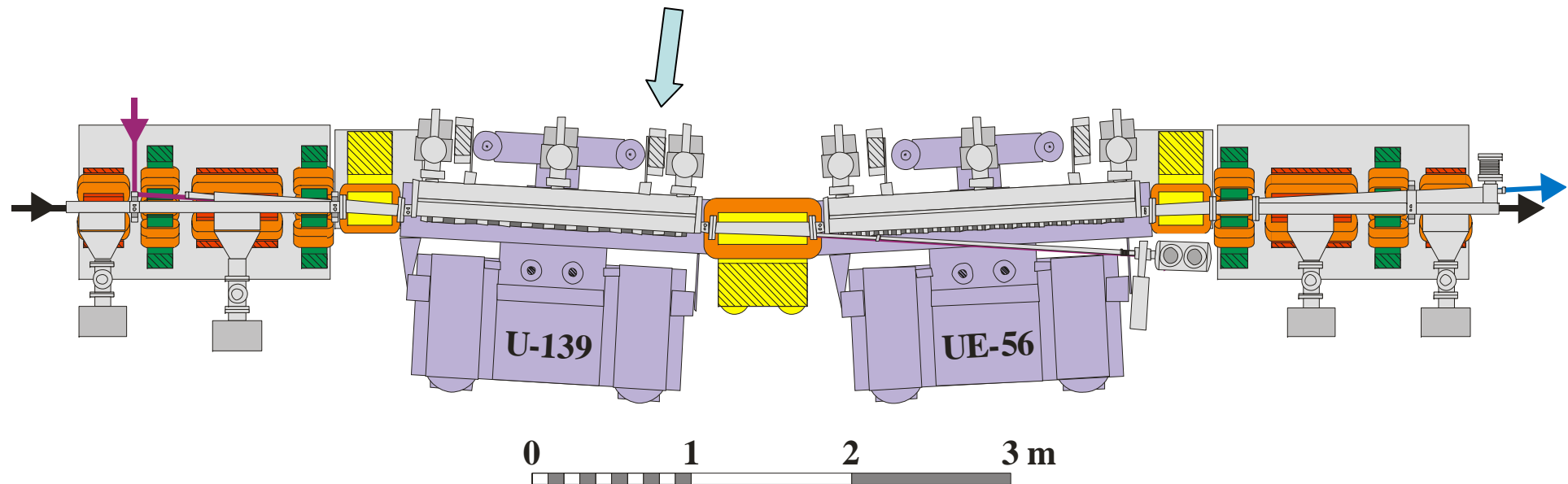
# **MAGNETIC DUST PARTICLES IN THE ID CHAMBER**

**P. Kuske – for the BESSY team**



chamber exchanged in the fall shut down of 2007

## molten mirror in the slicing section caused 1 week loss of beam time



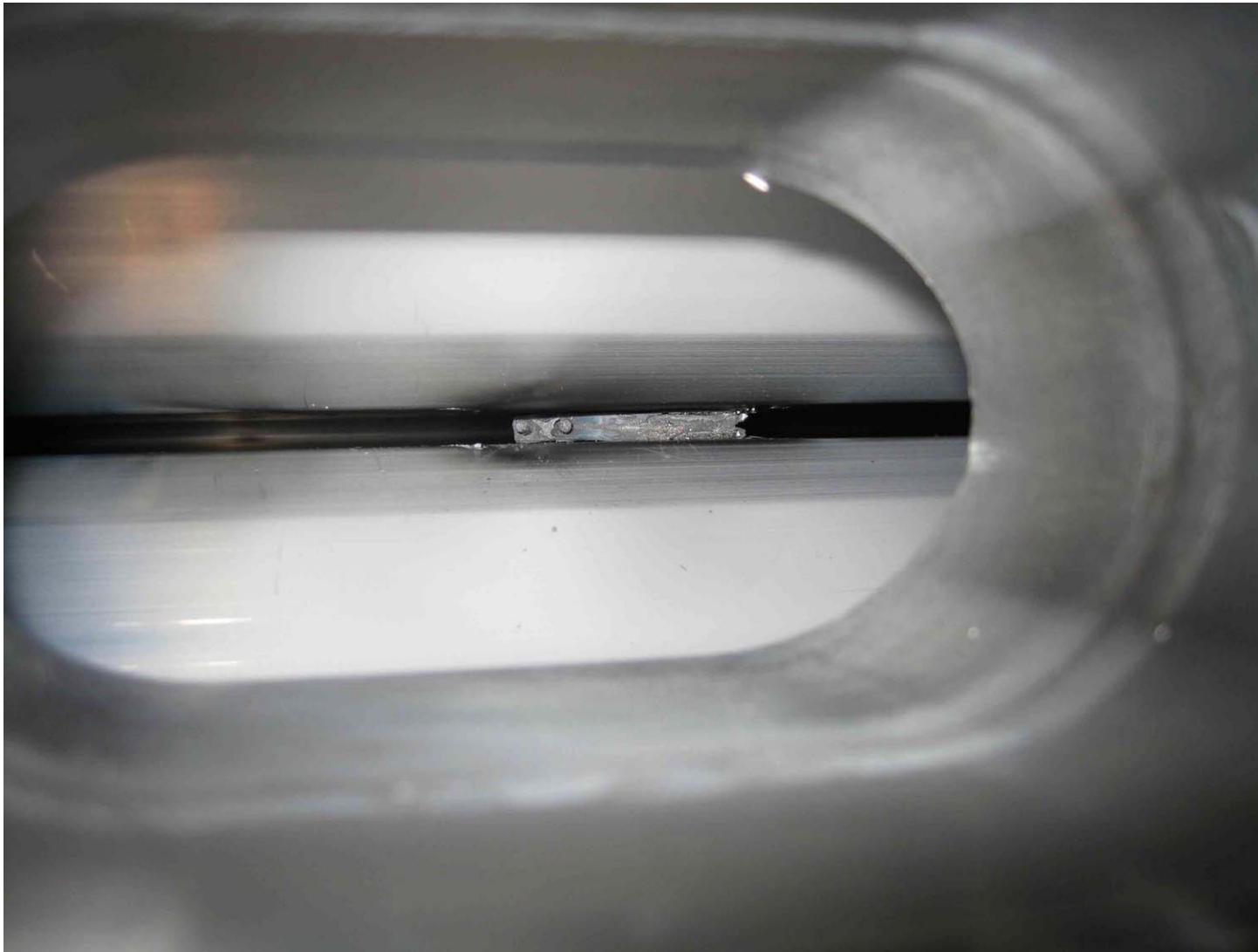
At the beginning of 2009 easy start after the christmas shut down

Operating with low intensity for the first days

On Wednesday after a few minutes at 300 mA beam loss and further injections impossible

With certain orbit bumps injection and beam accumulation → slicing section

After a while at high intensity no injection any more



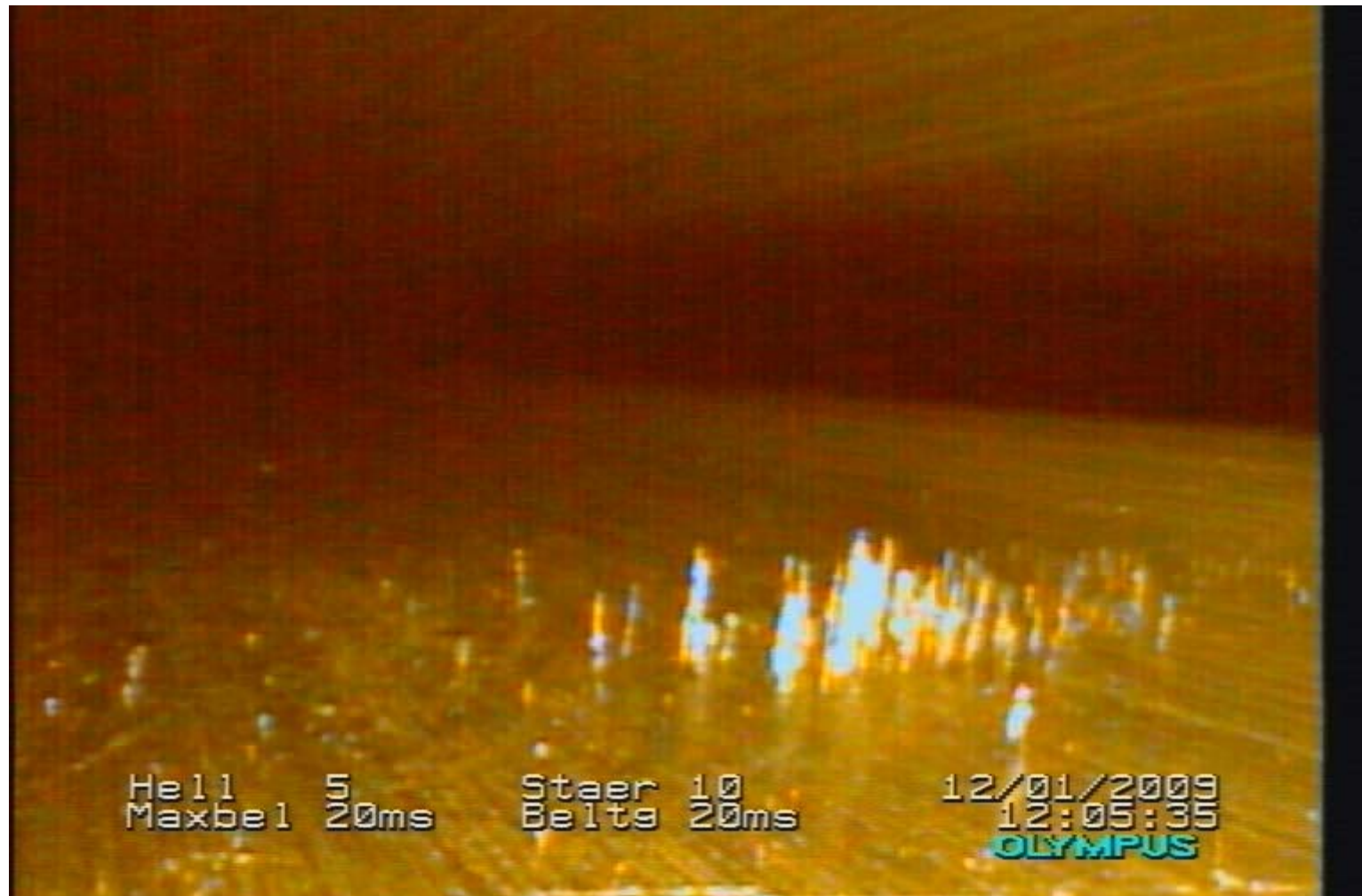




50 – 100 W













Pile up of dust particles after many attempts to remove all particles

Chamber was exchanged

Diagnostics is important - sometimes the prize is high

An earlier example: a too long ceramic in the single bunch gun (intended as a wall current monitor) charged up and the injection pass needed frequent readjustment

