

Computing Status and Plans at Hamburg

Hartmut Stadie

CMS Hamburg Meeting
July, 18th 2007

Tier-2 Operation Team

Team:

- coordination: B. Lewendel, Y. Kemp, H. Stadié(data manager)
- local computing jobs
- shifters: C. Autermann, B. Mura, C. Sander, R. Wolf
- experts from IT

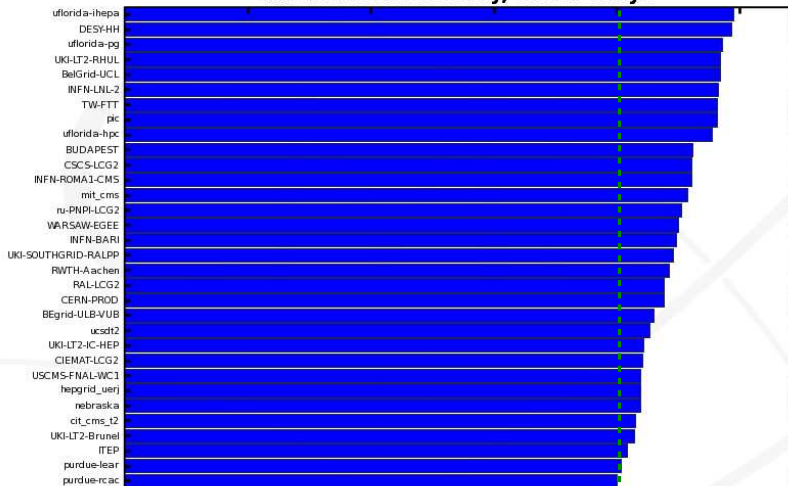
Shifts (1 person per week):

- check: SAM tests, ARDA job status, MC production, JobRobot, PhEDEx
- give summary talk in **bi-weekly local computing meeting**
- <https://twiki.cern.ch/twiki/bin/view/CMS/HamburgWikiComputingMonitoring>

SAM Results up to June 28th

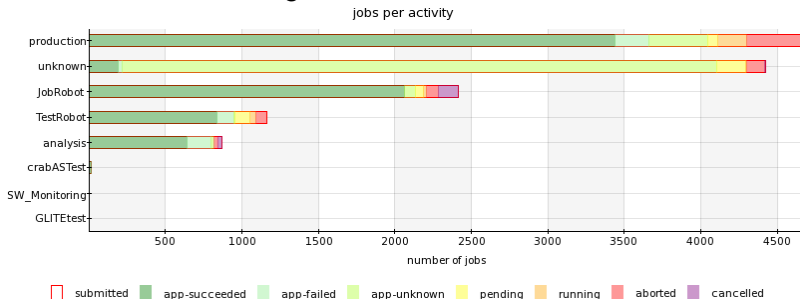
Tier-2 goal: > 80(90)%

SAM Site Availability, last 31 days



Job Activity

Jobs since last meeting on June 26th:



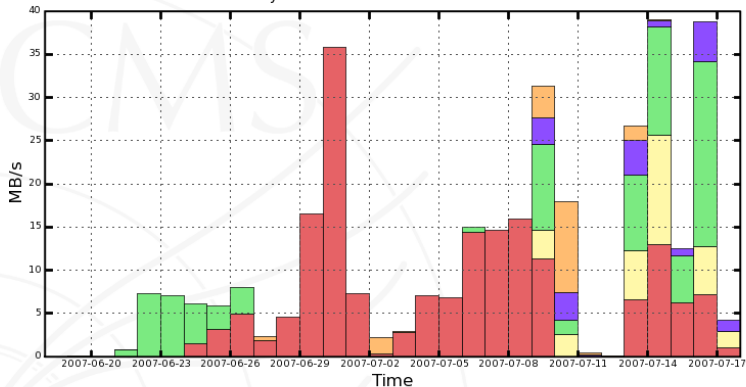
rebalance production/analysis?

new batch setup planned

PhEDEx

CMS PhEDEx - Transfer Rate

30 Days from 2007-06-18 to 2007-07-18 UTC



Maximum: 39.05 MB/s, Minimum: 0.01 MB/s, Average: 12.03 MB/s, Current: 4.17 MB/s

waiting for commissioning of links (3.6 – 6 MB/s required)

Plans before CSA07

Aim: better scalability and more efficient operation for the first years of CMS data taking

New Storage Instance

- new dCache instance deployed
- to do: test new setup
- to do: migrate data and services

New CE Setup, SL4

We need SL4 for CSA07 analysis jobs!
new CE/batch setup:

- better sharing of resources
- acknowledge CMS VOMS roles, groups (**DCMS!!!**)

Plans for CSA07

Official CSA07 pledges

- 15 TB storage space(see Wiki page:
<https://twiki.cern.ch/twiki/bin/view/CMS/HamburgWikiSamples>)
- job slots for analysis(reduce production?)

Further plans

Make best use of existing (larger) resources for German CMS groups!

Import additional samples as needed/requested.

Local Resources

Workgroupserver

- 18 SL3 nodes (66 cores?)
- 22 TB local data disks(requests to cms-admin@desy.de)
- see <https://twiki.cern.ch/twiki/bin/view/CMS/HamburgWikiComputingLocal>
- share AFS directories with:
`fs sa -acl usg:cms rl -dir <dir>`

Batch Systems

- Bird-Cluster: special shared compute servers
- c2-Queue uses CMS WGS, no AFS token
- testing in progress
(<http://www-it.desy.de/systems/services/batch/sge>)

Migration to Scientific Linux 4

SL4

- required for CMSSW 1.5
- CMSSW releases exist down to 1.3
- better 64-bit support

Migration Plan

- step 1: migrate uhh-cms016 to uhh-cms020 and desy-cms001 to desy-cms005 **now/soon**
- step 2: migrate uhh-cms012 to uhh-cms015 and ?