

CMC Offices in Bldg 1

G. Eckerlin
23.Nov.2009

- Renovation - status and plan
- Temporary offices during reconstruction
- Final locations for CMS in Building 1
- Reminder on how the moving is done

Renovating Building 1

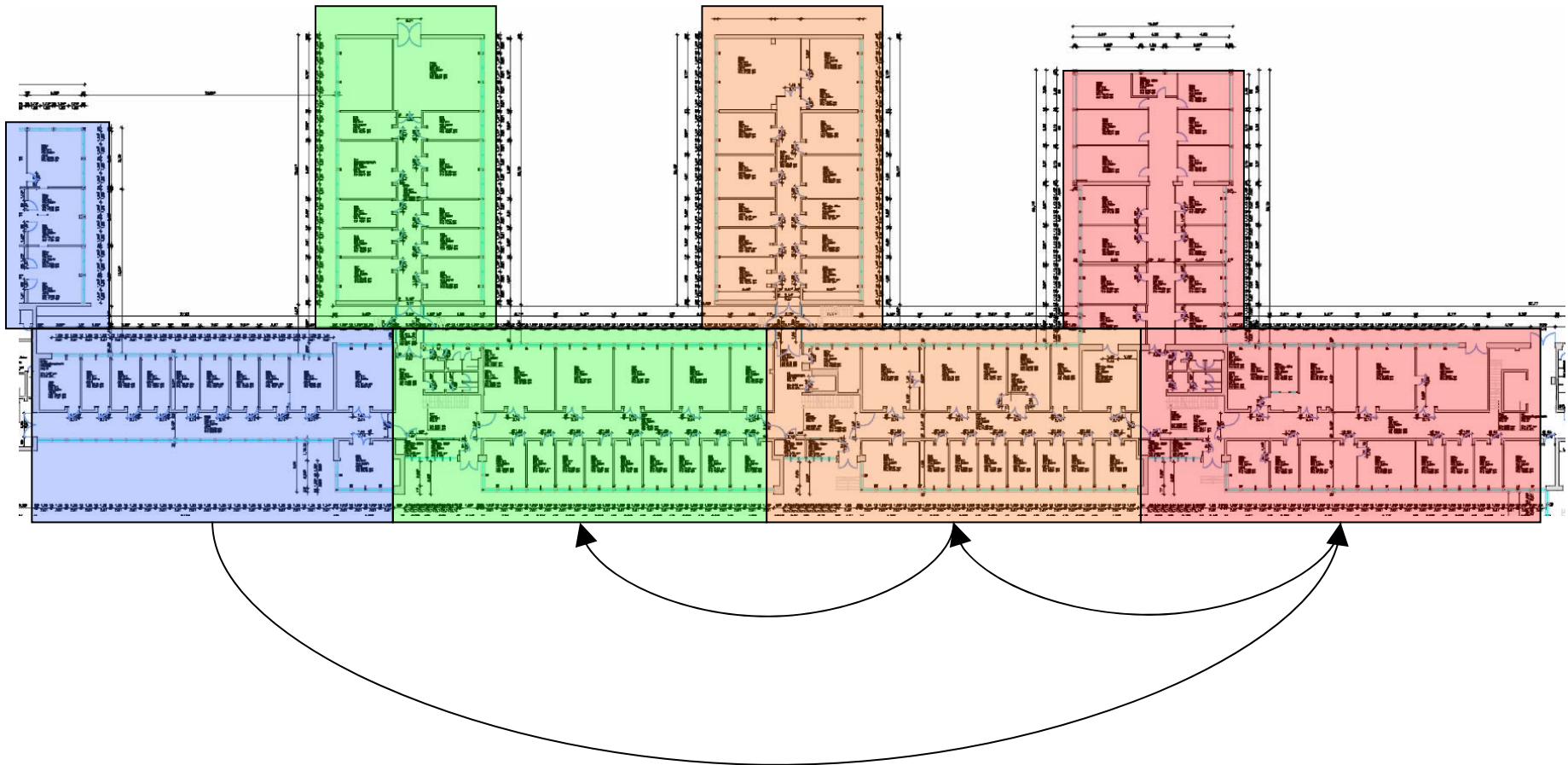
(Dates are rough estimates. Don't rely on them !)

Phase 2
1/2010
7/2010

Phase 5
7/2011
1/2012

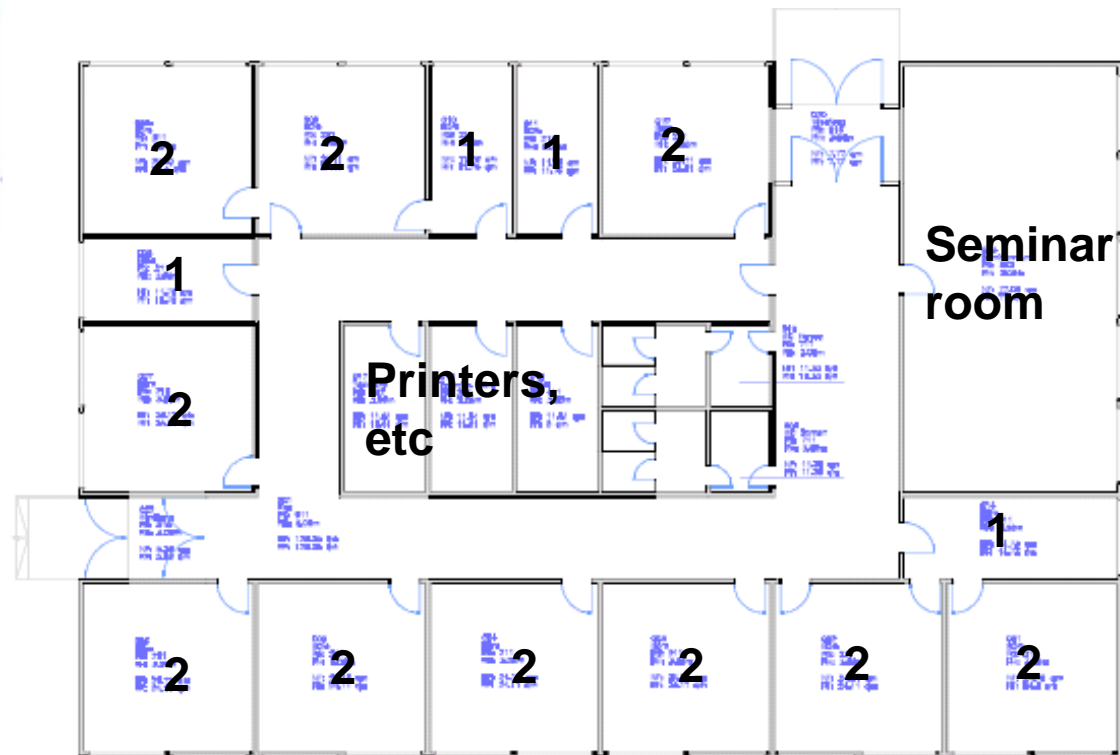
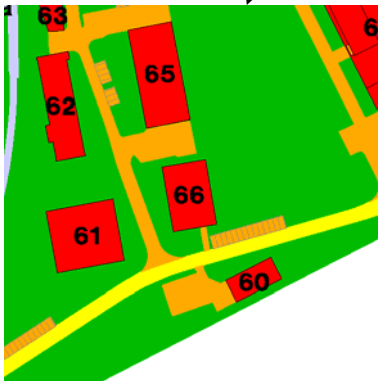
Phase 4
1/2011
7/2011

Phase 3
7/2010
1/2011



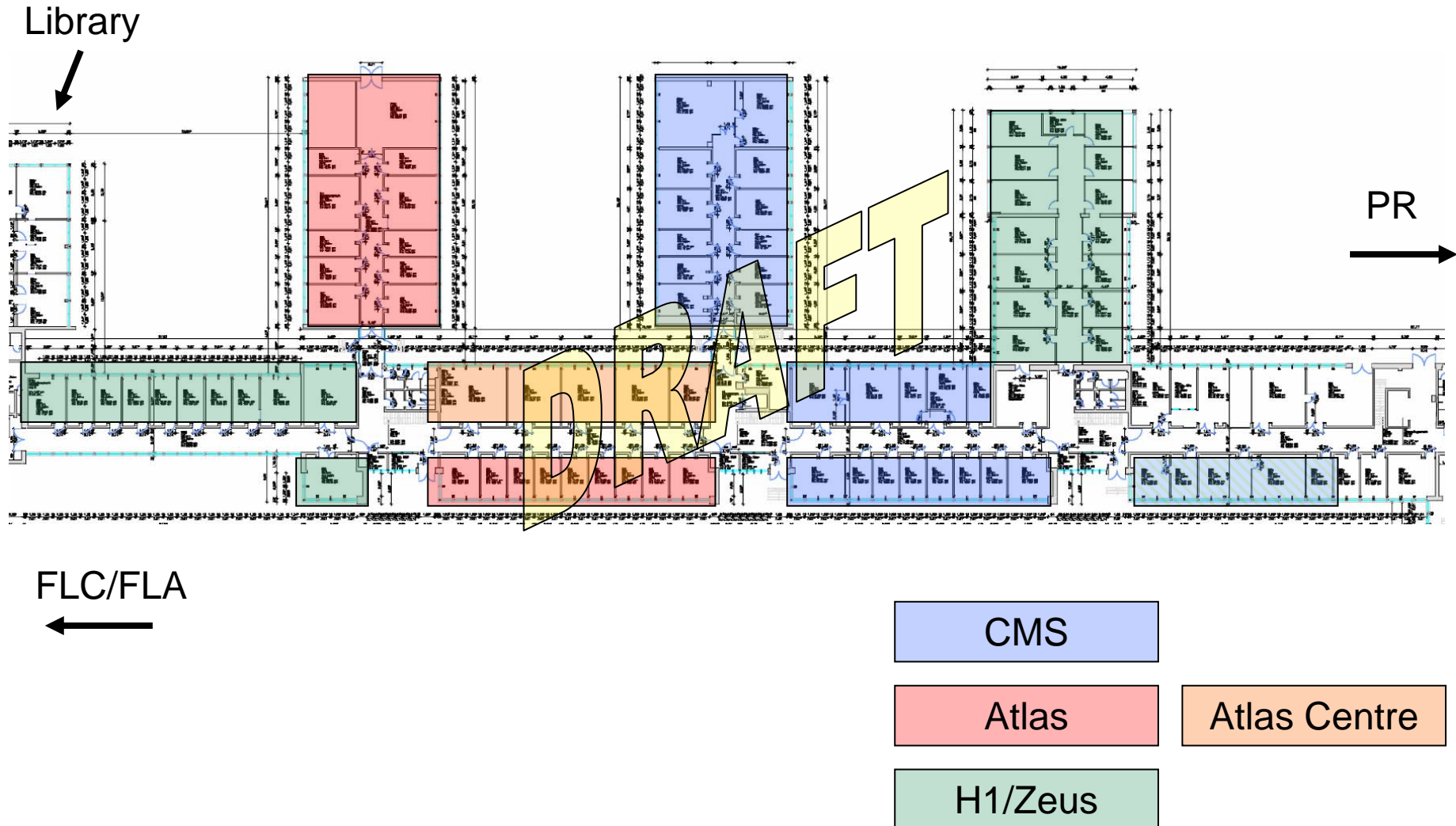
Temporary offices in Building 66

Phase 2 - 4 : not enough space for CMS in building 1
Will use building 66 as overflow (starting ~ Feb 2010)
Bldg 66 will also be used by Theory (G. Weiglein)
All CMS offices finished with phase 4
by ~ Mid 2011 all CMS people back in Bldg 1

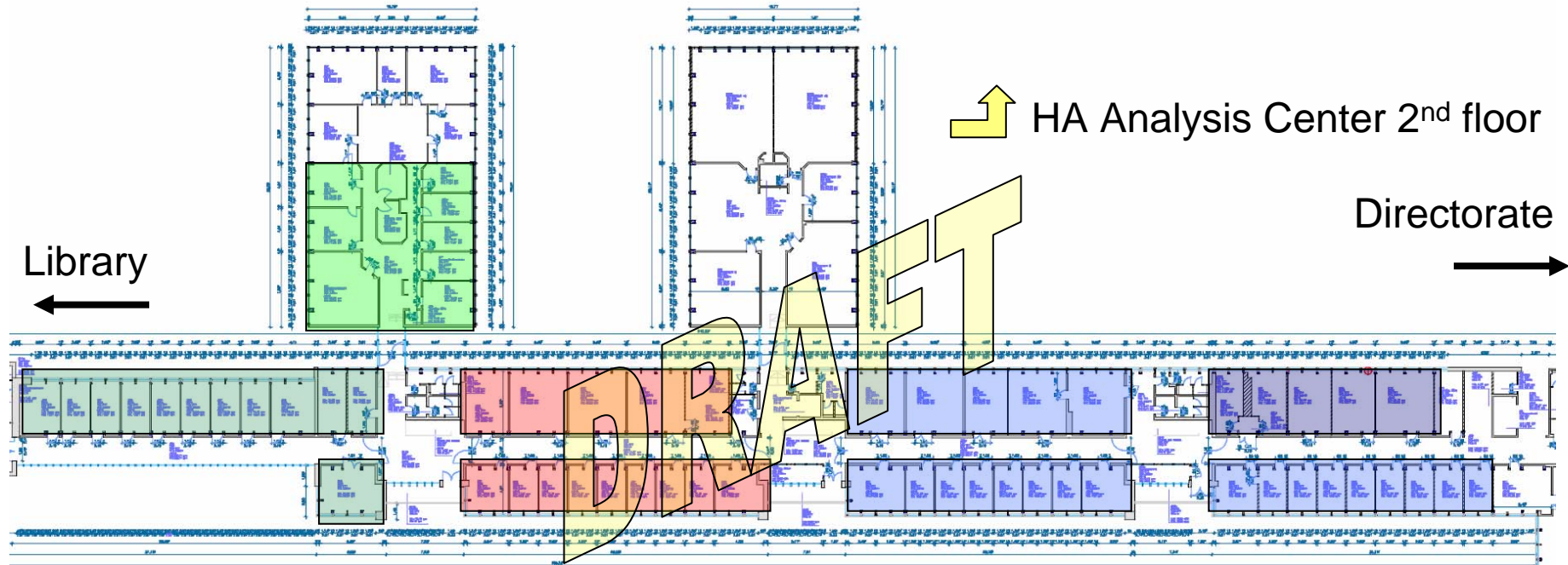


$4x_1 + 10x_2 = 24$ persons + seminar room, printer, etc

Building 1, ground floor



Building 1, 1st floor



FLC/FLA

CMS

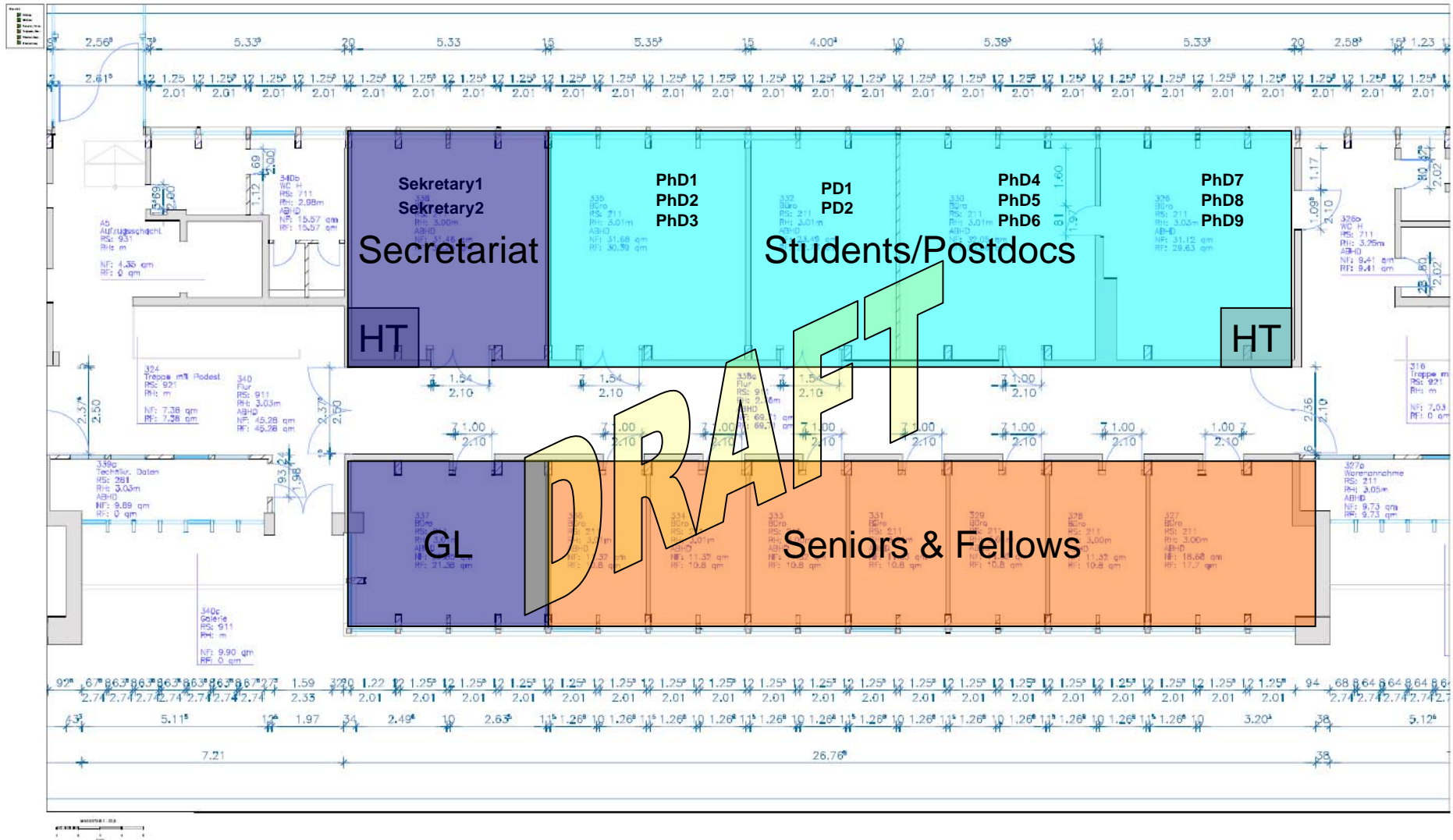
CMS Centre

Atlas

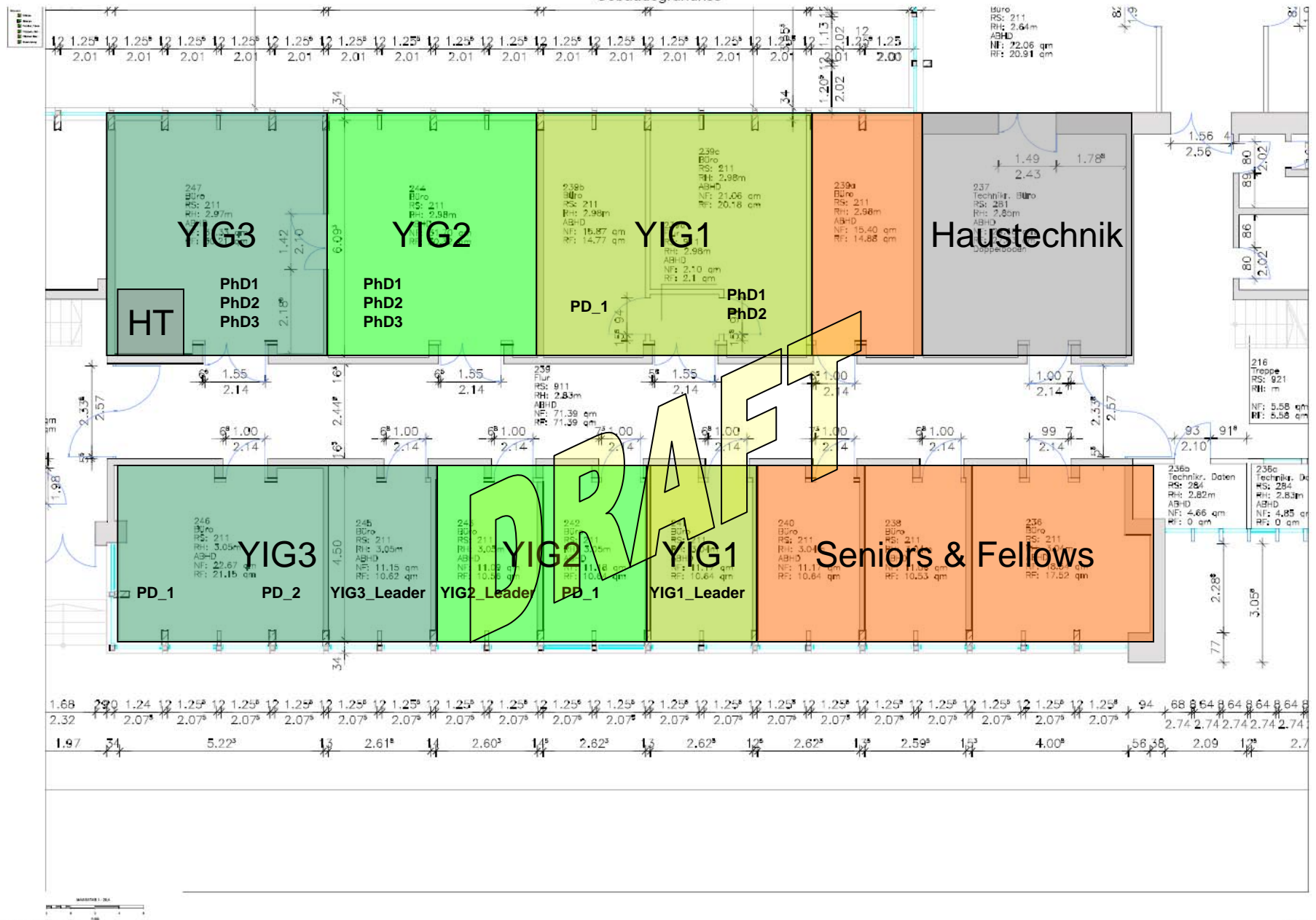
Theory

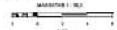
H1/Zeus





Gebäudegrundriss





Next Steps

Distribution of the groups (Atlas, CMS, etc) in building 1 is (almost) final
group leaders/office responsible agreed to the latest draft (see above)
end of November directorate will hopefully approve this
layout will then displayed on message boards

Distribution of names to offices exists in a first draft
will be discussed inside the group as soon as directorate has approved
the office allocation for the groups and the office responsible/group leaders
have crosschecked the draft
will then be presented to the groups for final corrections and approval

Need to fix distribution by January to allow final planning on the phases 2 – 4
to minimize movement we need to know the final location

Currently phase 1 is almost on schedule (to be finished by January)
offices in 1c have to be left by Jan/Feb
we asked for a confirmation of the moving date by mid December

Prepare in advance if you will not be here in January
ask me for boxes to be provided and store you belonging in them
clearly mark PCs & equipment you want to be moved with your name
what ever is left in the office will be disposed !

Moving CMS

We will try to minimize the movements
Everybody in Bldg 1 will move at least once
Nobody needs to move more than twice

We try to minimize the time in temporary offices
Still some people will be in building 66 for up to 18 months

You phone number will move with you (but not the phone)
(shared phone numbers obviously not in all cases)
Old analog phones will be replaced by IP phones (easier to move)

Your PC, desk and shelf usually move with you
(Unless the PC or furniture is too old)

The date for moving will be fixed at least 4 weeks in advance
You will store your belongings in boxes provided in advance
Moving will be done in 1 day by a company
If needed we will store desks/boxes etc in a temporary storage

WARNING

What ever is left in the office will be disposed !

In case of specific needs or questions please contact me