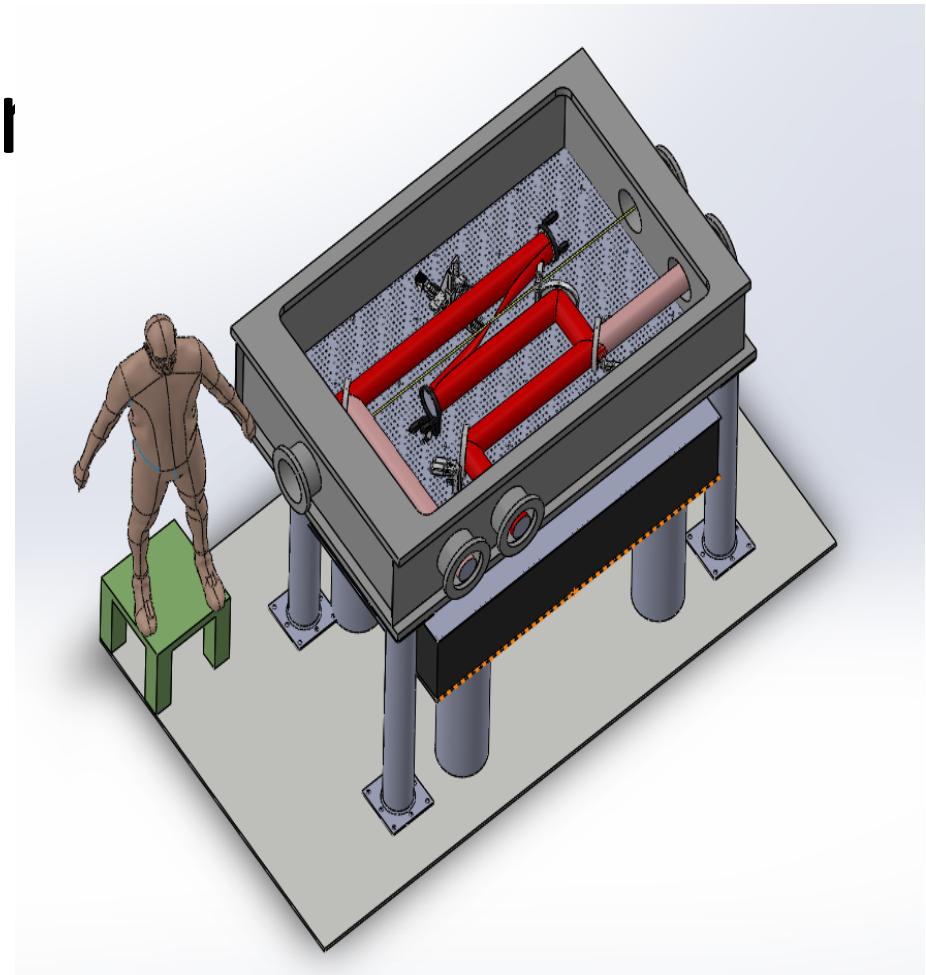
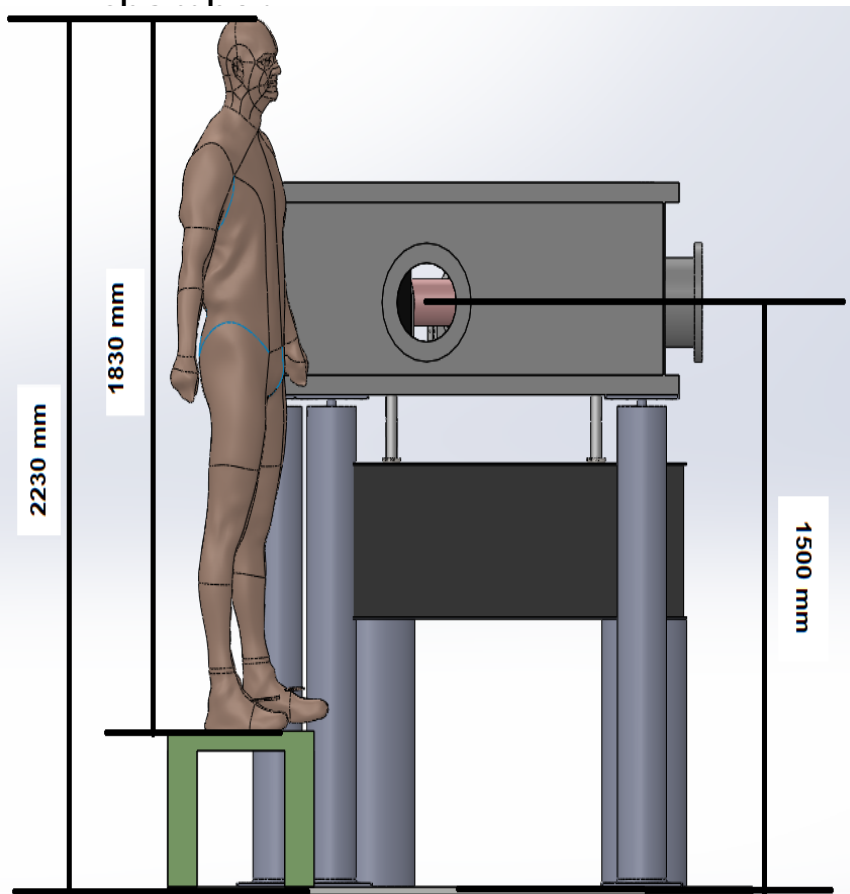


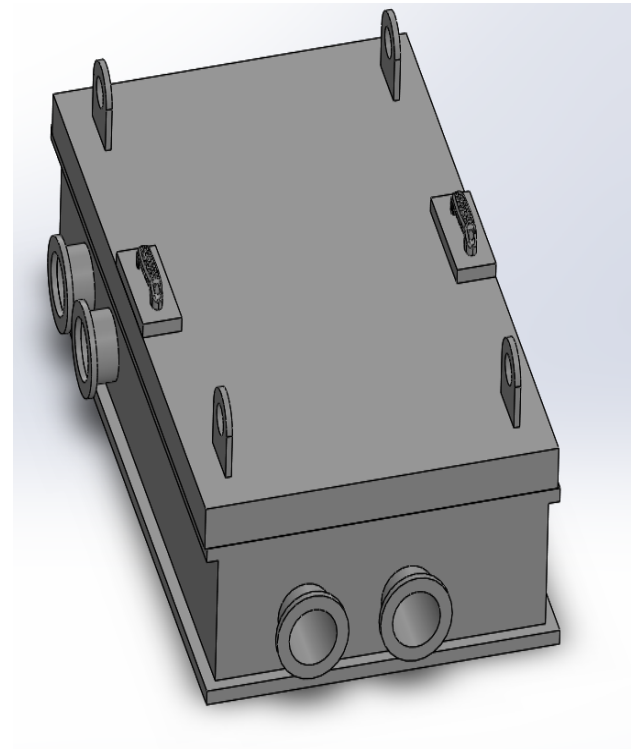
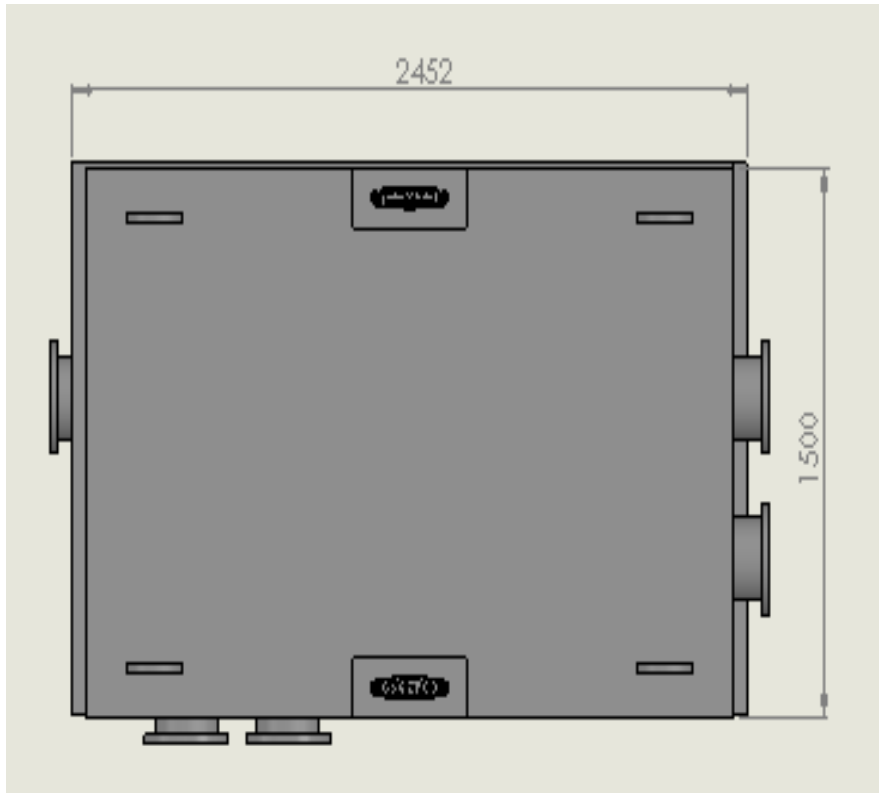
General dimension

Scale: 1.83 meter tall man next to the

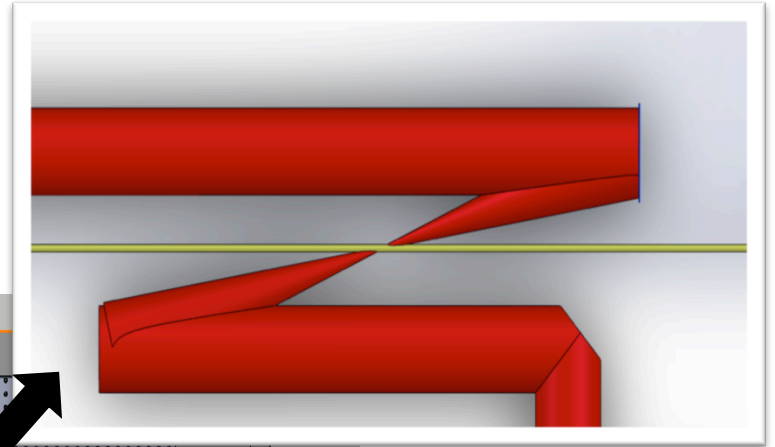


Height of
laser
beam
from the
floor

Vacuum chamber dimensions



TOP VIEW - Ports



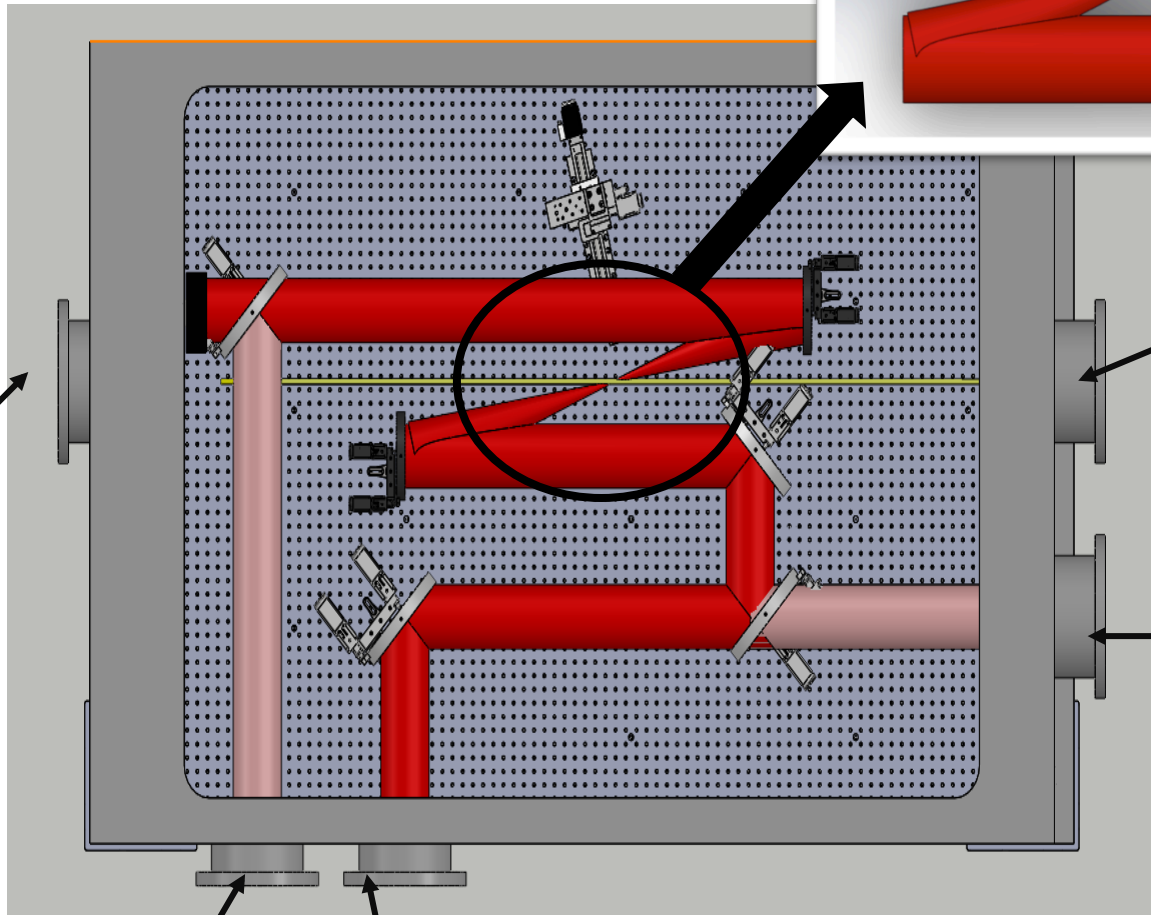
Electron beam & experiment output

Electron beam

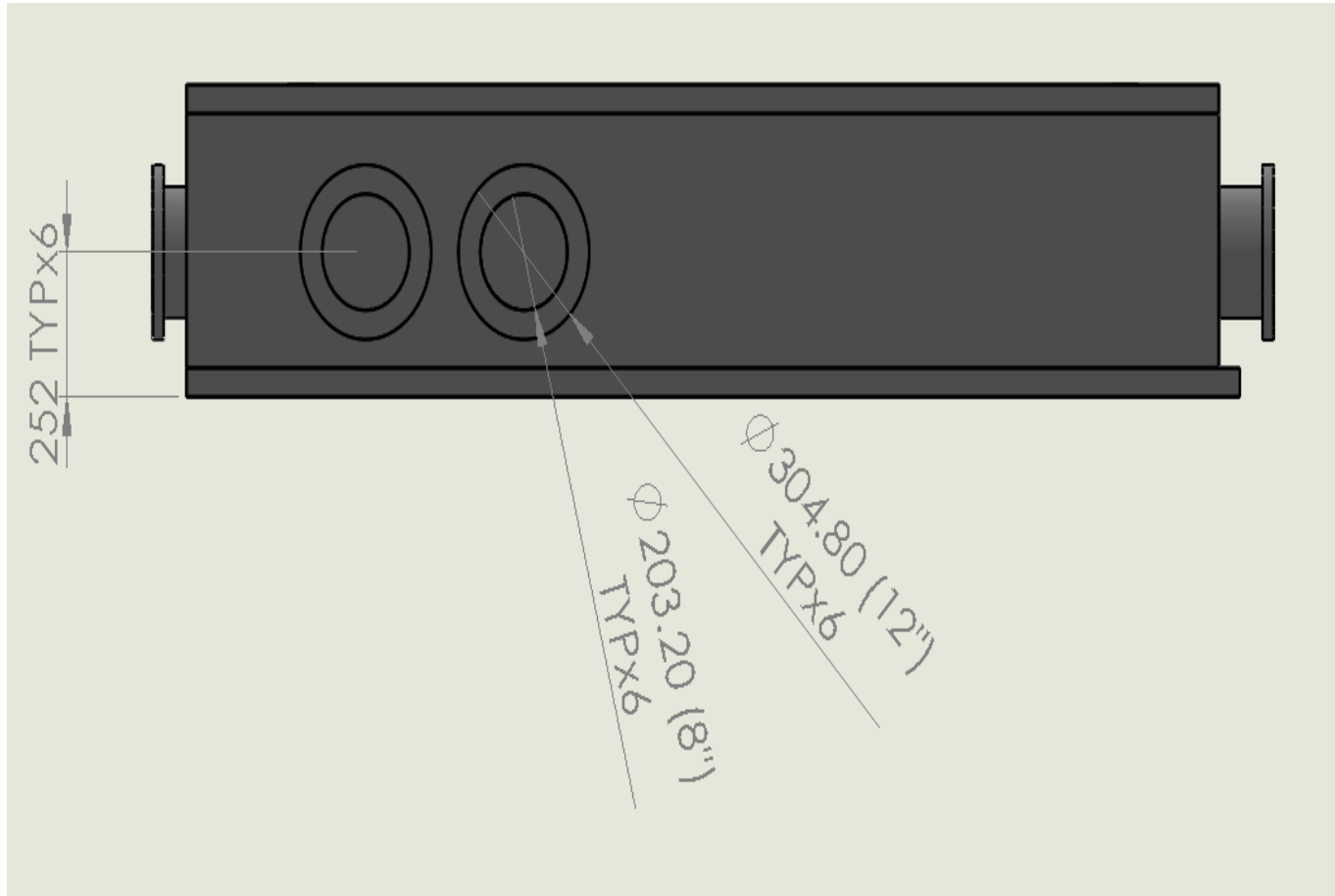
Laser beam leakage to camera

Laser beam to measuring table

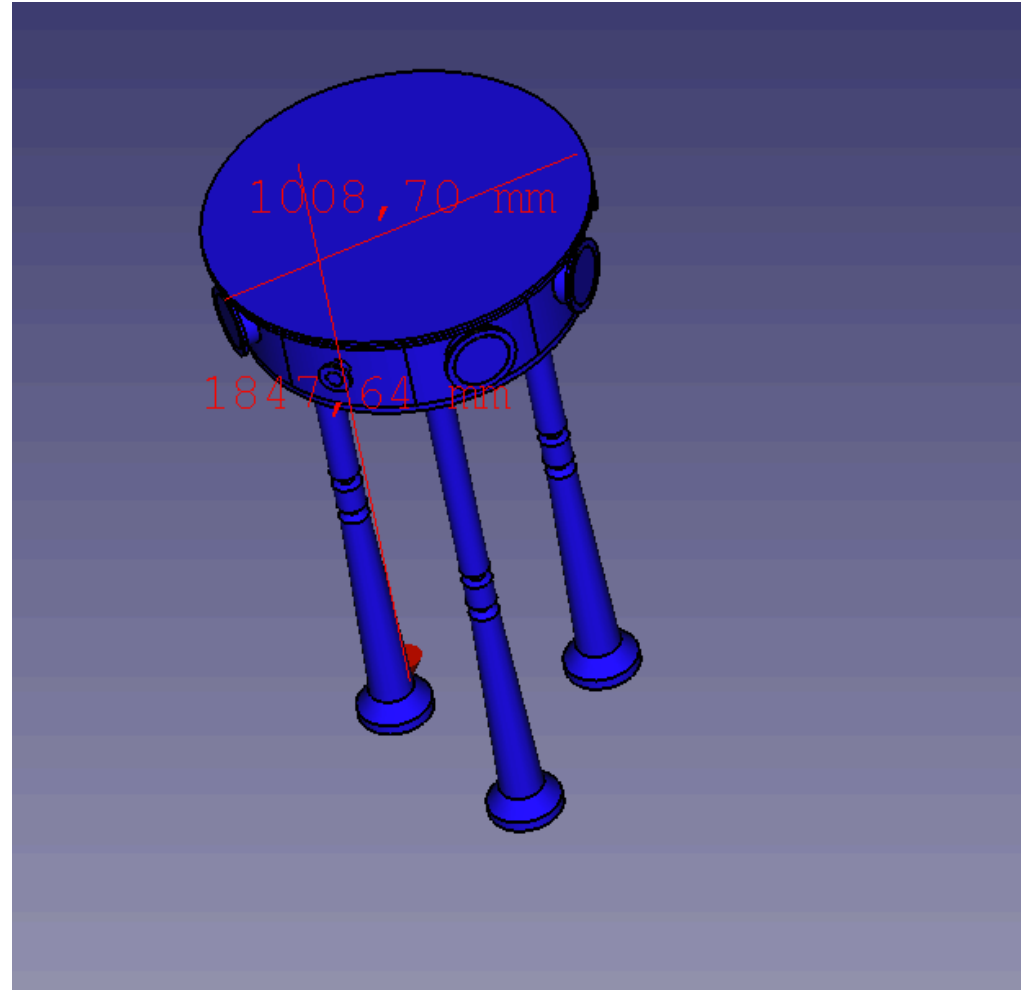
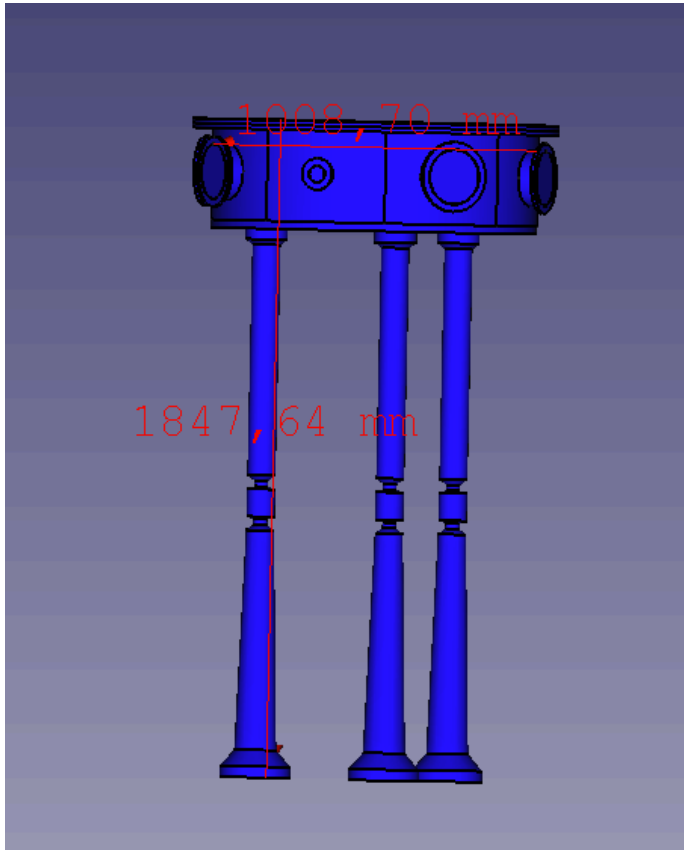
Laser beam entrance



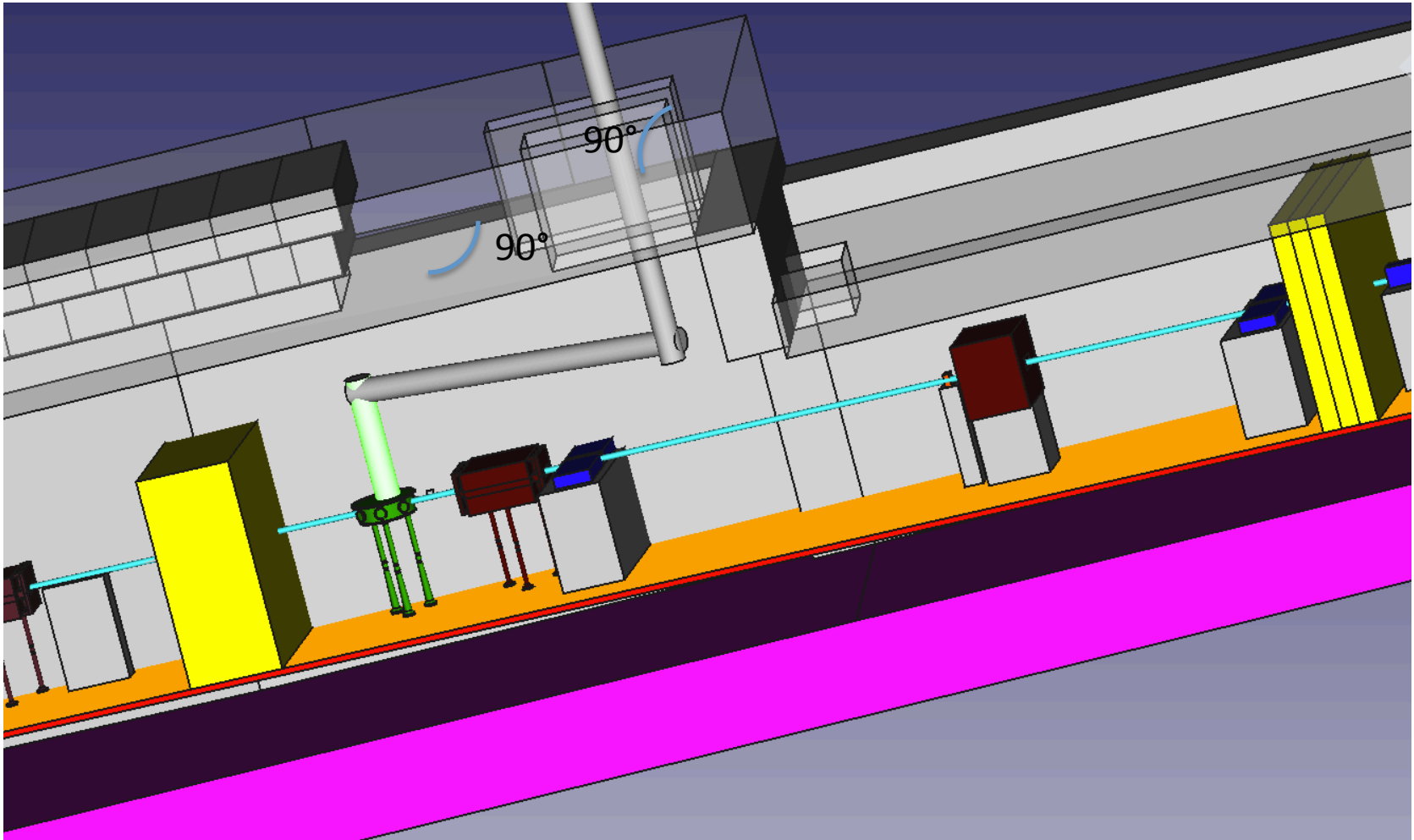
Port dimensions



This is what we currently have in the simulation



Angle between the electron beam pipe and the IPBox will happen in the box, it is important however to bend the laser pipe along with 45° mirrors, that translate into 90° angle.



Angle between horizontal laser pipe and beam pipe is around 18°, is this a problem?

The new IP box does not fit in the model, it's too big, fortunately we will shift the beam line away from the wall by 2 degrees, made some preliminary tests and it should fit.

