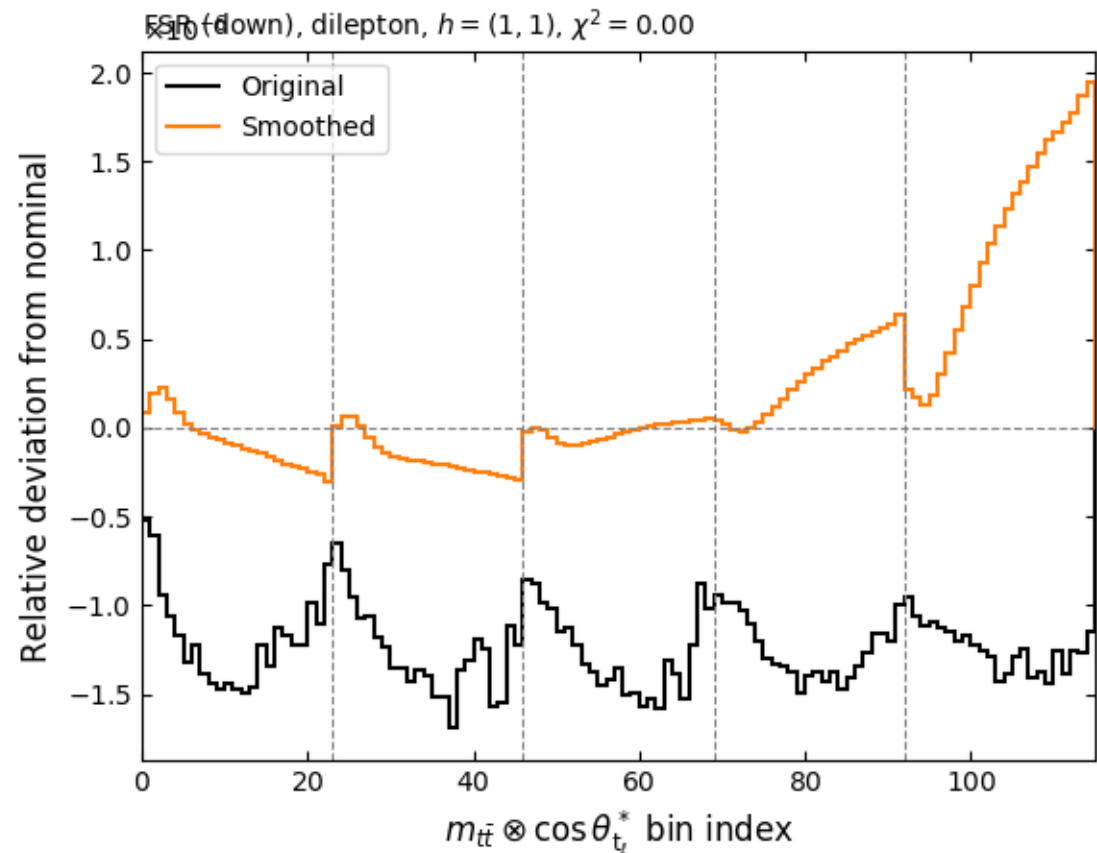
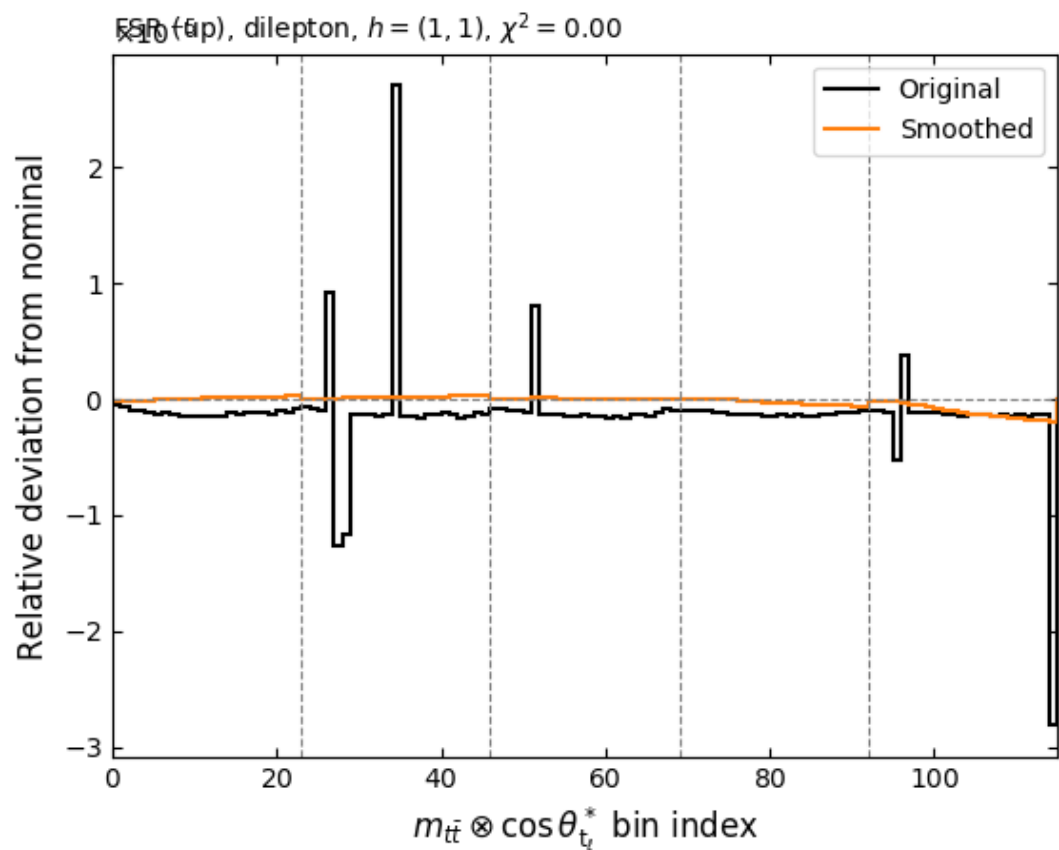


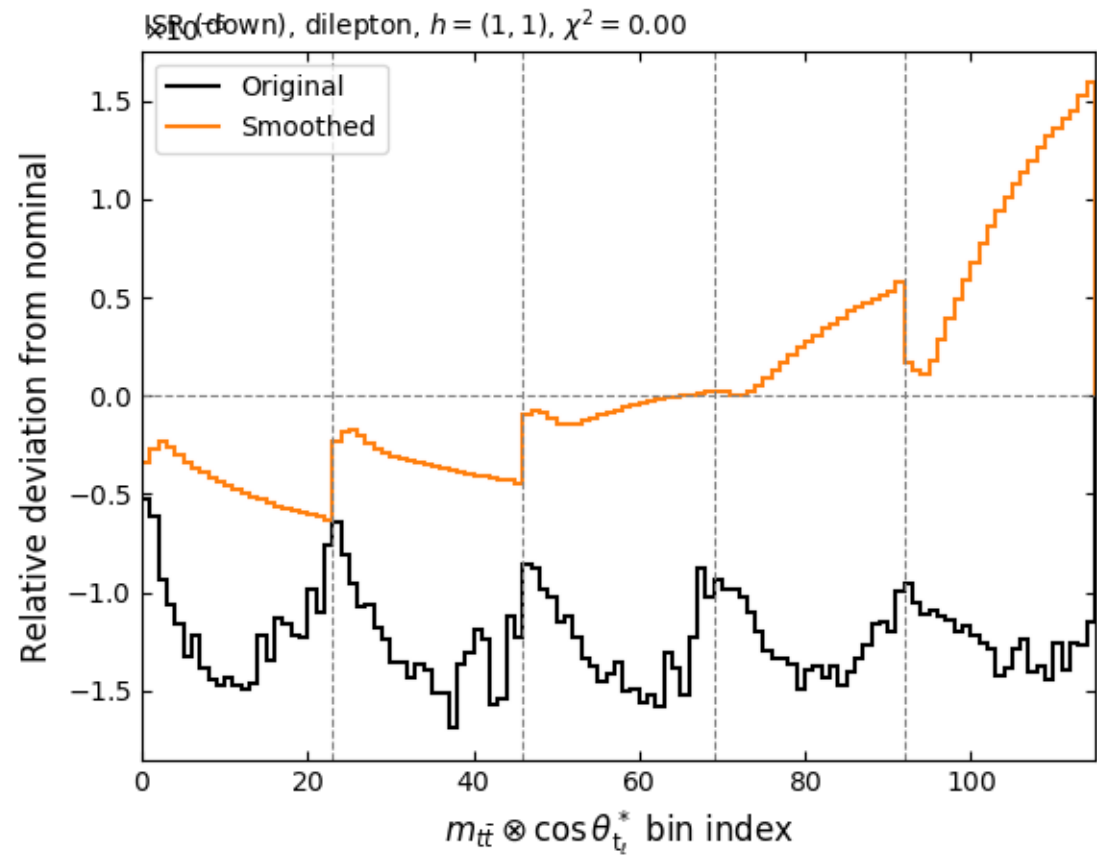
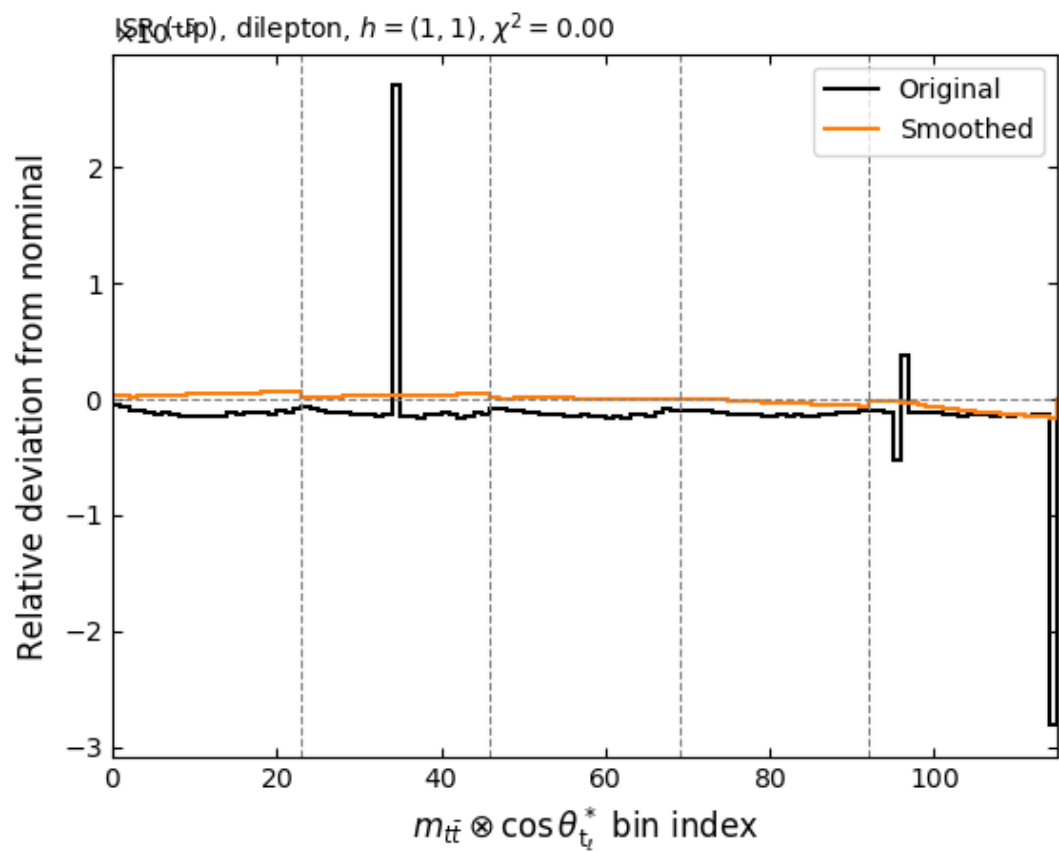
Comments

- Changed Nominal and FSR/ISR samples to PSweights where possible for higher statistics
- FSR and ISR are different and small effects $O 10^{-6}$ (spikes $O 10^{-5}$)
- Nominal variations will now have smaller error by a factor 2 at least
- For independent samples, top mass can be smoothed as normal, with Hdamp and UETUNE it is necessary to merge over cHel bins

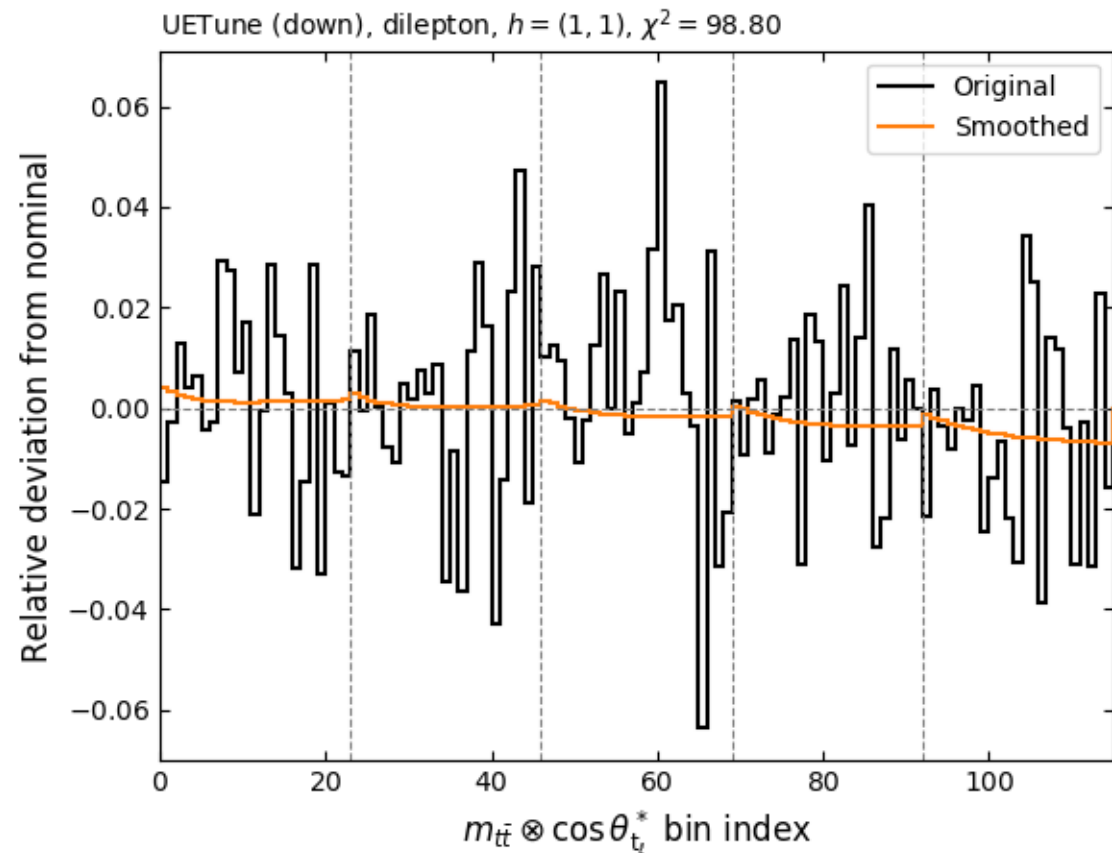
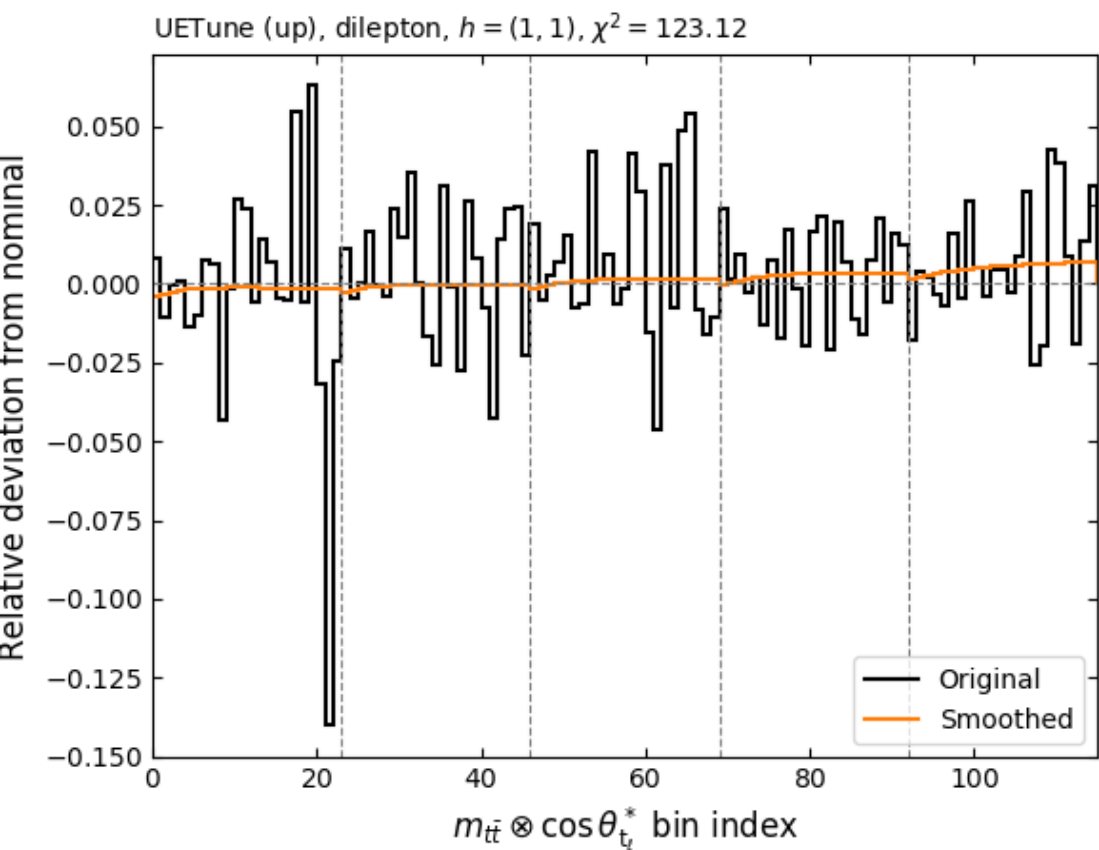
FSR



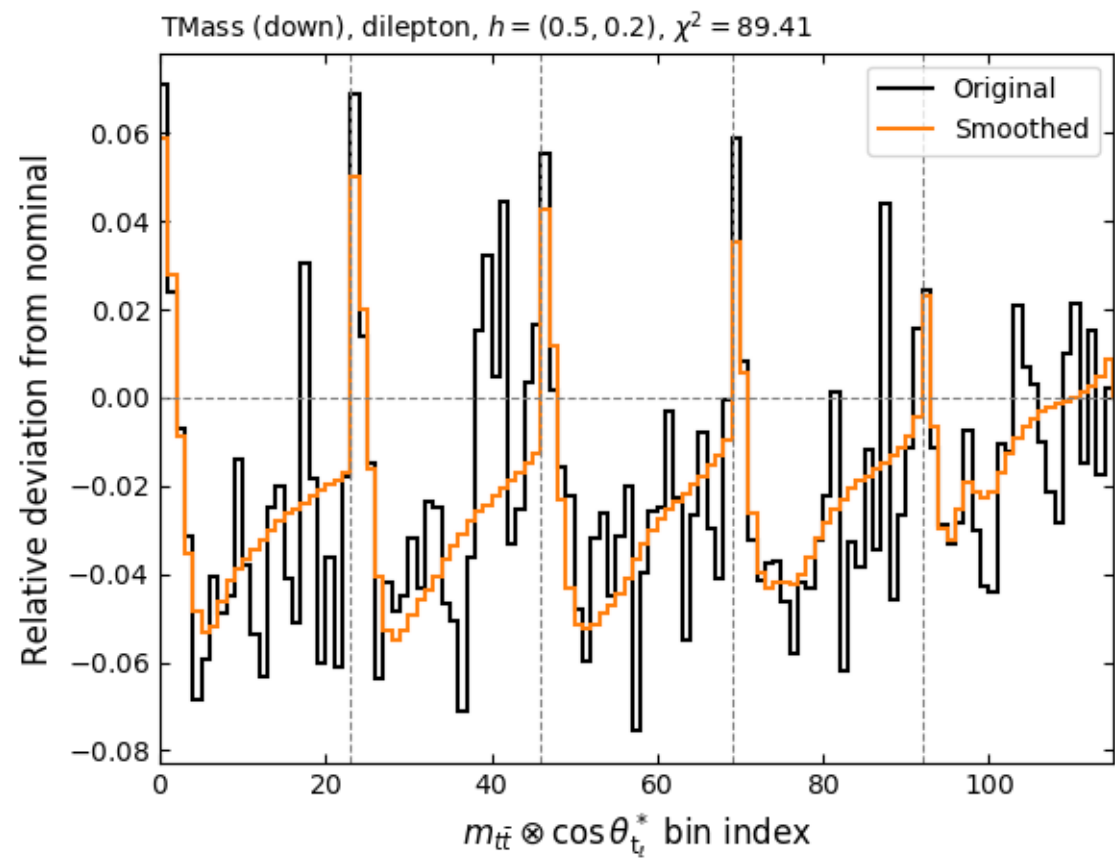
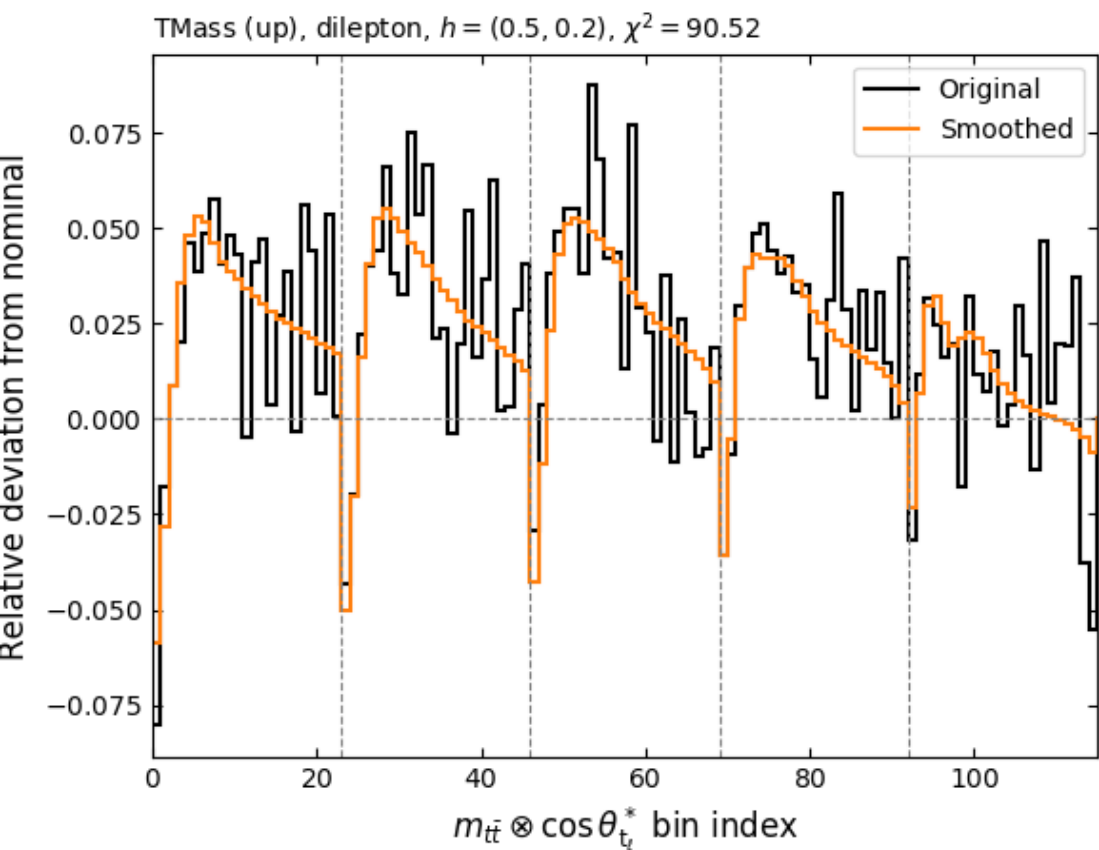
ISR



UETUNE



MASS



Hdamp-TT

