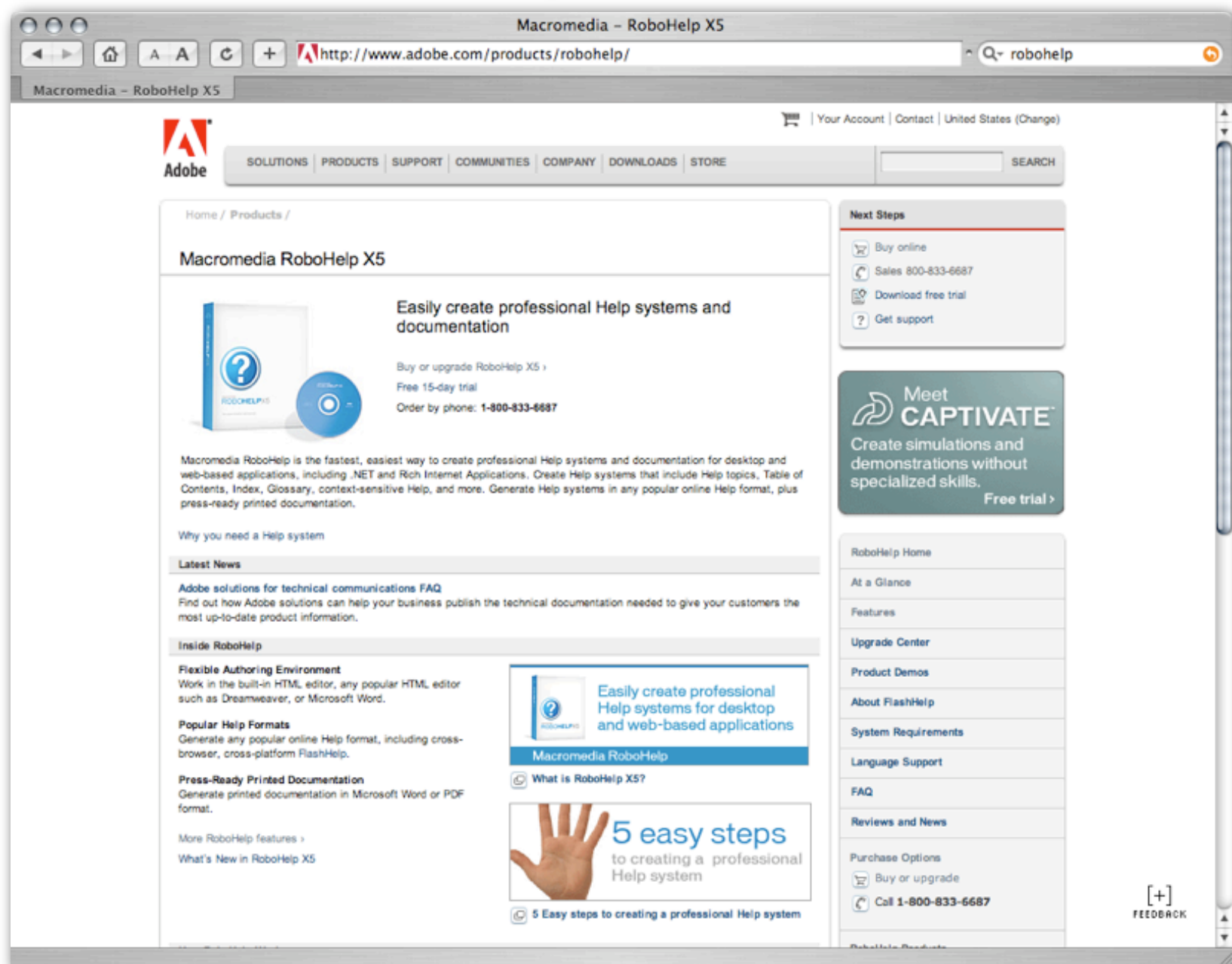


About the Help System for the GANMVL

Outline

1. Commercial help-maker
2. non-Commercial (free) help-maker
3. Wiki
4. Conclusions

RoboHelp (the state of the art?)





macromedia
ROBOHELPX5

Easily Create Professional Help Systems and Documentation

Macromedia RoboHelp Office is the fastest, easiest way to create professional Help systems and documentation for desktop and Web-based applications, including .NET and Rich Internet Applications. You can work in RoboHelp's built-in HTML editor, any popular HTML editor such as Dreamweaver or FrontPage, or Microsoft Word. Create Help systems complete with Help topics, Table of Contents, Index, Glossary, context sensitive Help, and more. Generate multiple Help systems in any popular online Help format, plus press-ready printed documentation in Microsoft Word or PDF format.

Easy-to-Use

Work in your preferred editor. Create and edit your Help systems in RoboHelp's built-in HTML editor, any popular HTML editor such as Dreamweaver or FrontPage, or Microsoft Word. Since you choose the authoring environment, you can skip the learning curve and get started immediately.

Use the content you already have. Import

Flexible

Generate any popular online Help format. Generate your project in any popular format, including FlashHelp, WebHelp, Microsoft HTML Help, WinHelp, JavaHelp, Oracle Help for Java, and XML. Generate any or all of these formats from a single project with a single click.

Create Help systems that run on any

Efficient

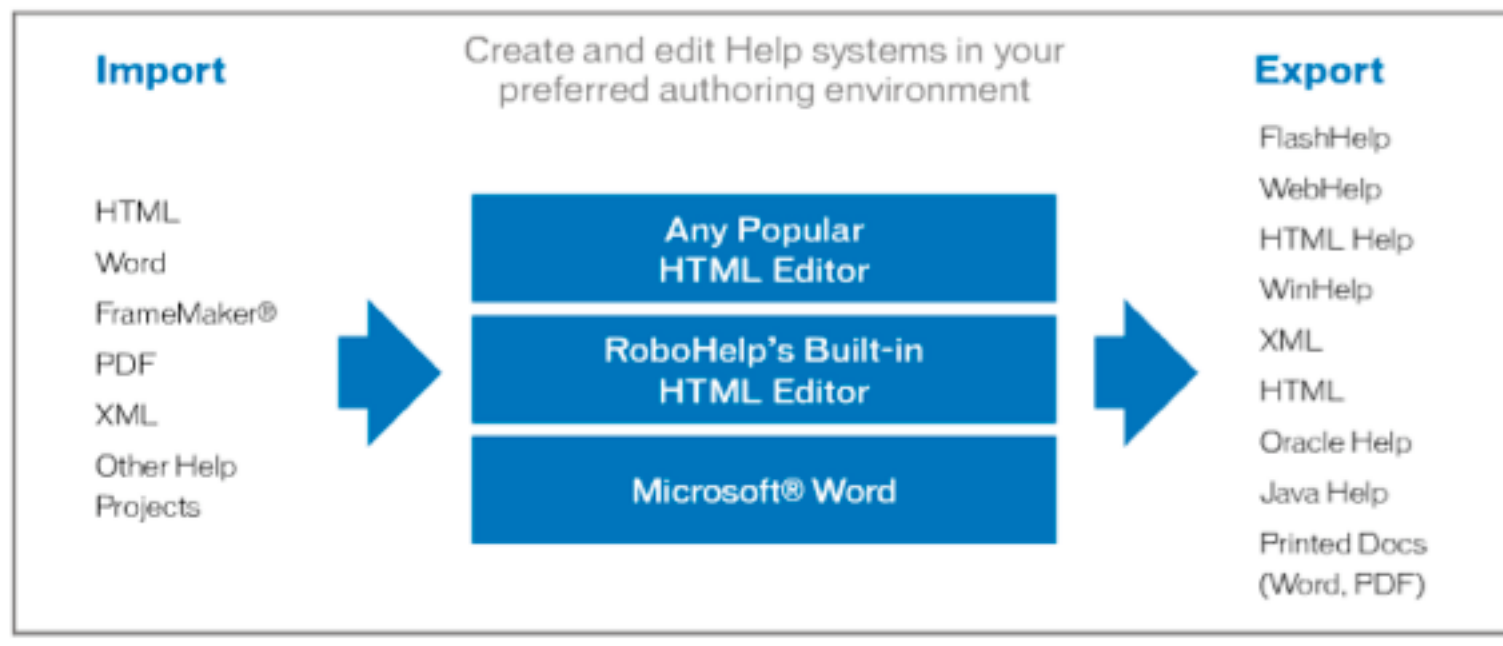
Save time. Create professional Help systems and printed documentation for desktop and Web-based applications in a fraction of the time. Automated wizards and project templates accelerate the process to help you meet or beat your deadlines.

Organize workflow. Stay organized and track document evolution with file check

RoboHelp features

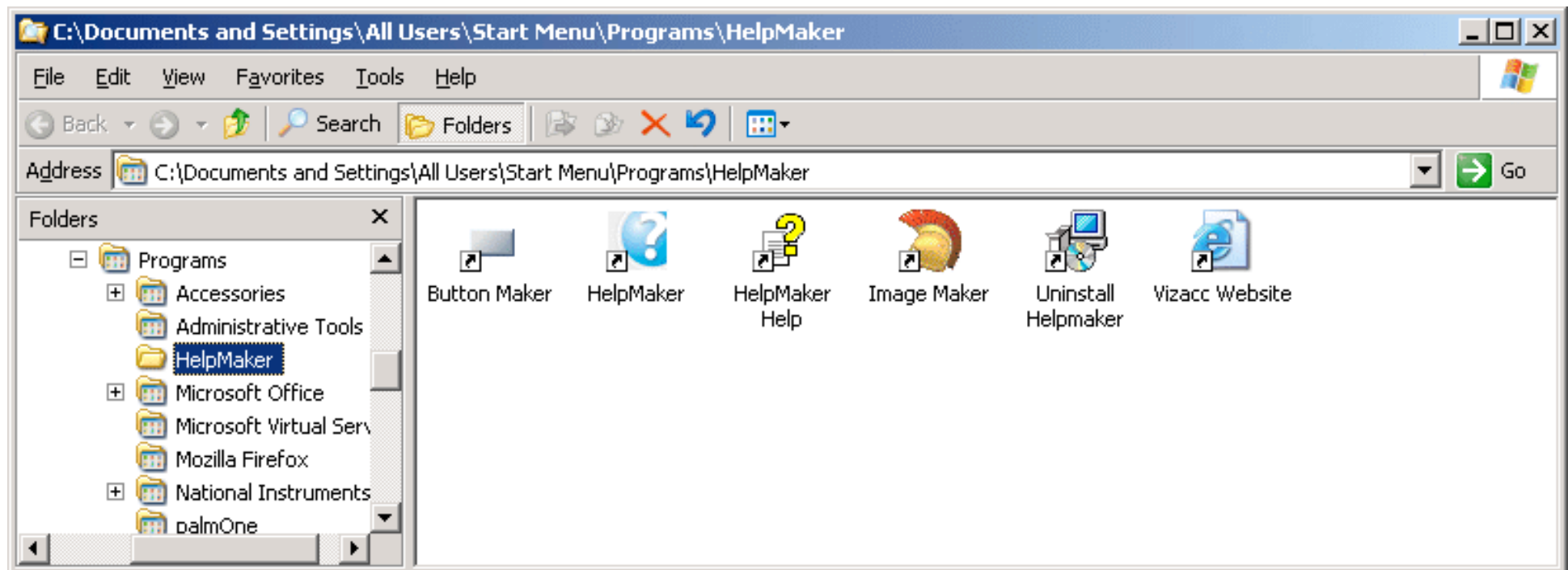
- import anything
- export anything
- remote editing
- support
- ~2,500.00 EUR

How RoboHelp Works

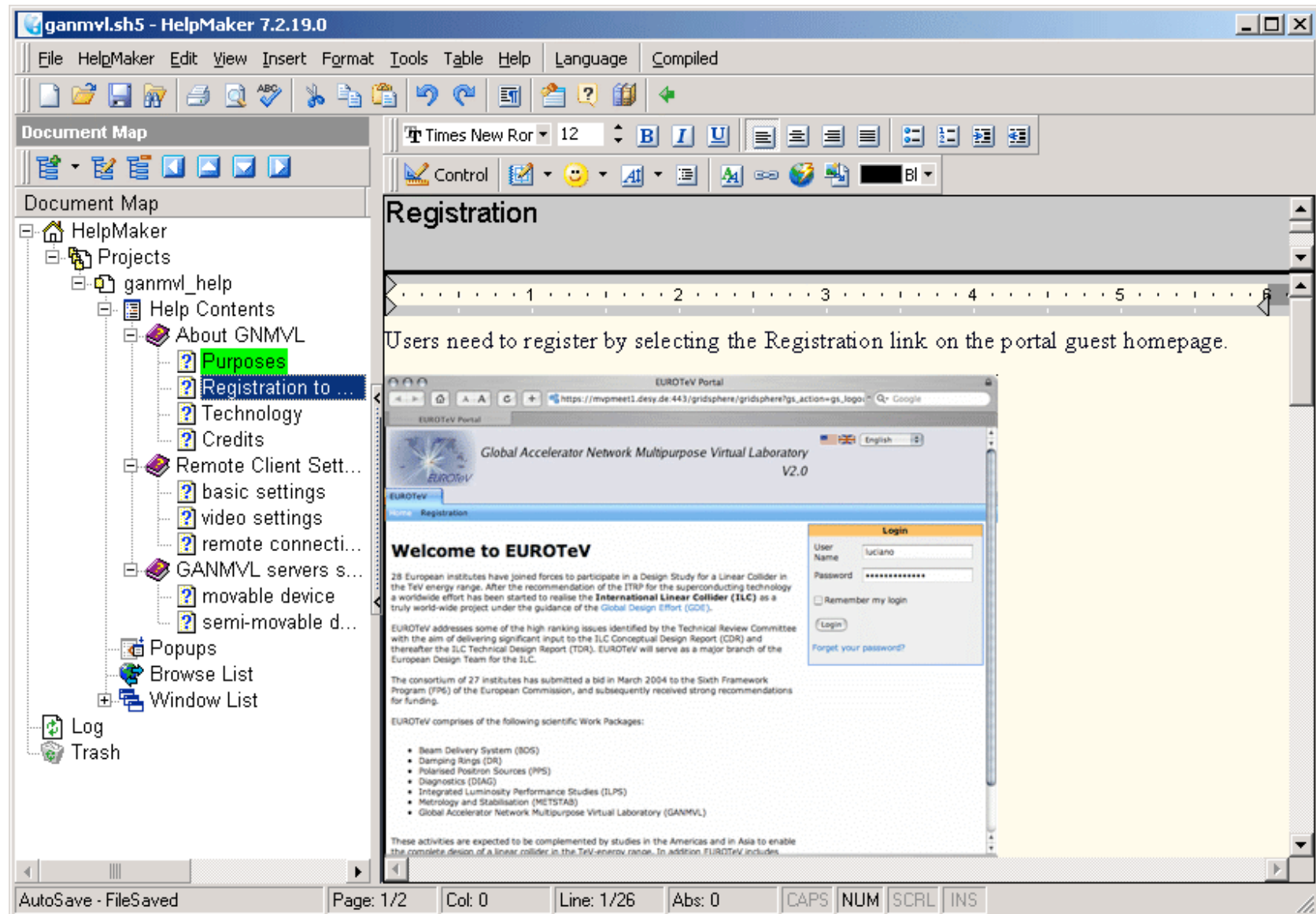


HelpMaker

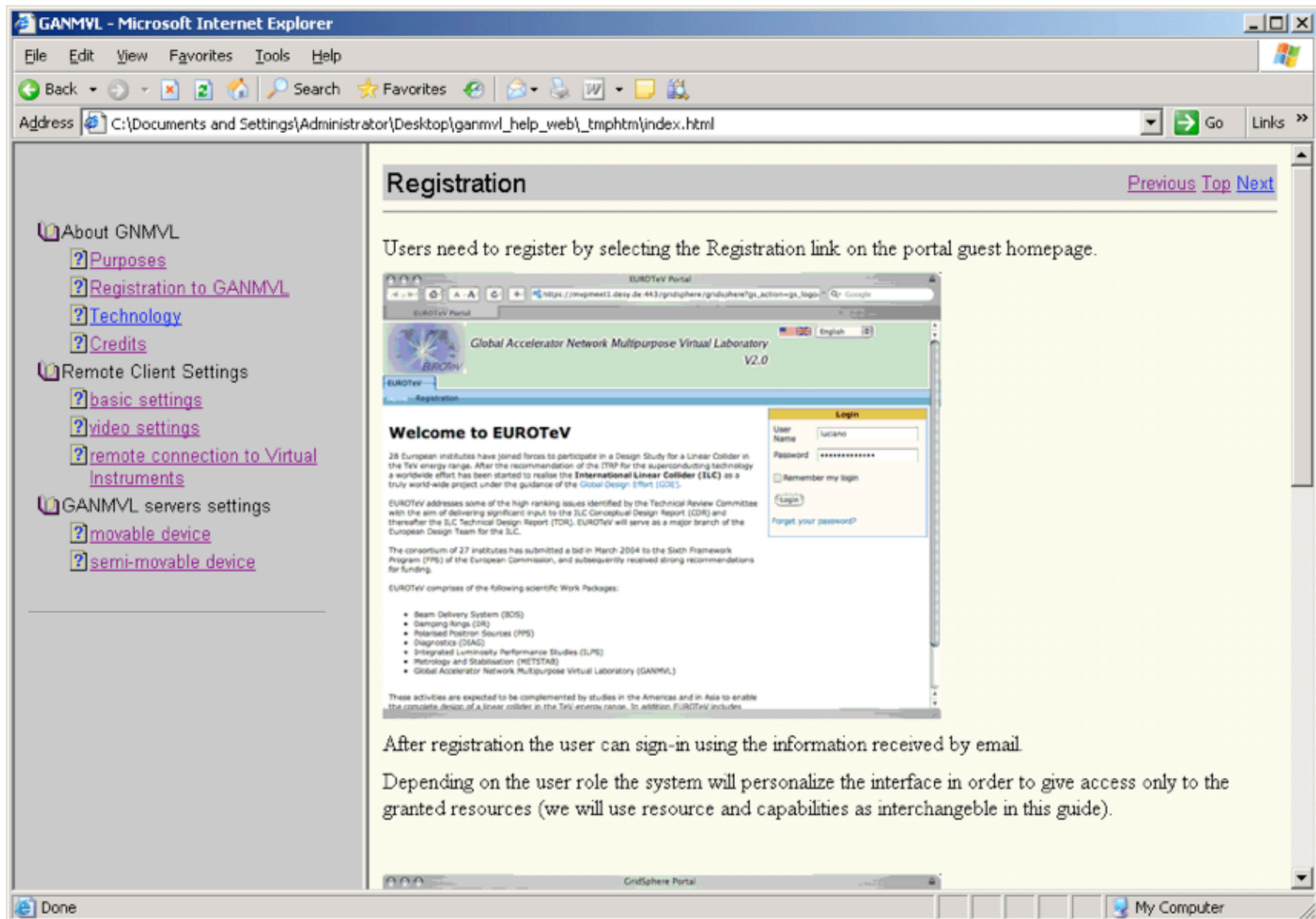
- free
- import some
- export few (2)
- remote editing ?
- support poor



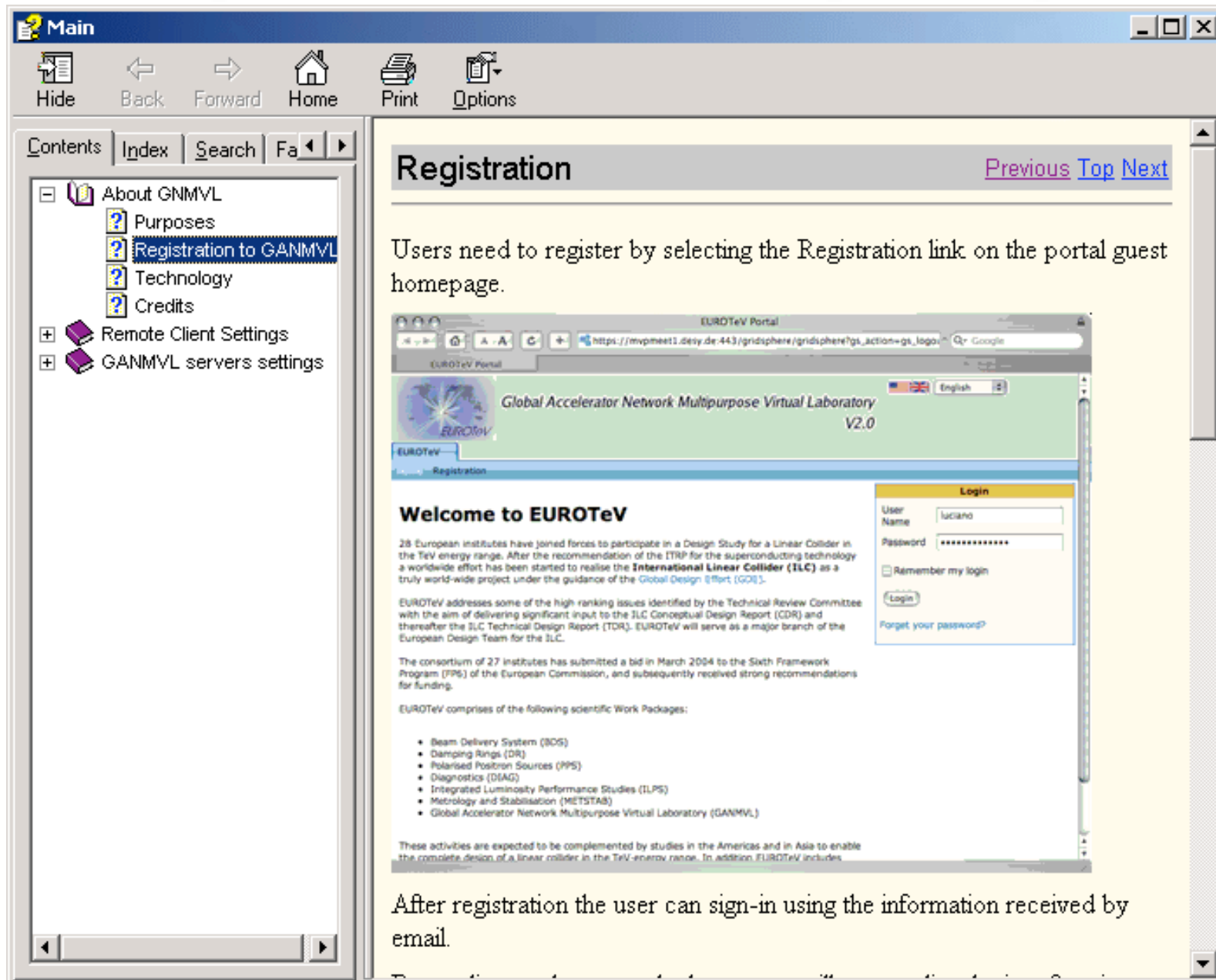
HelpMaker editor



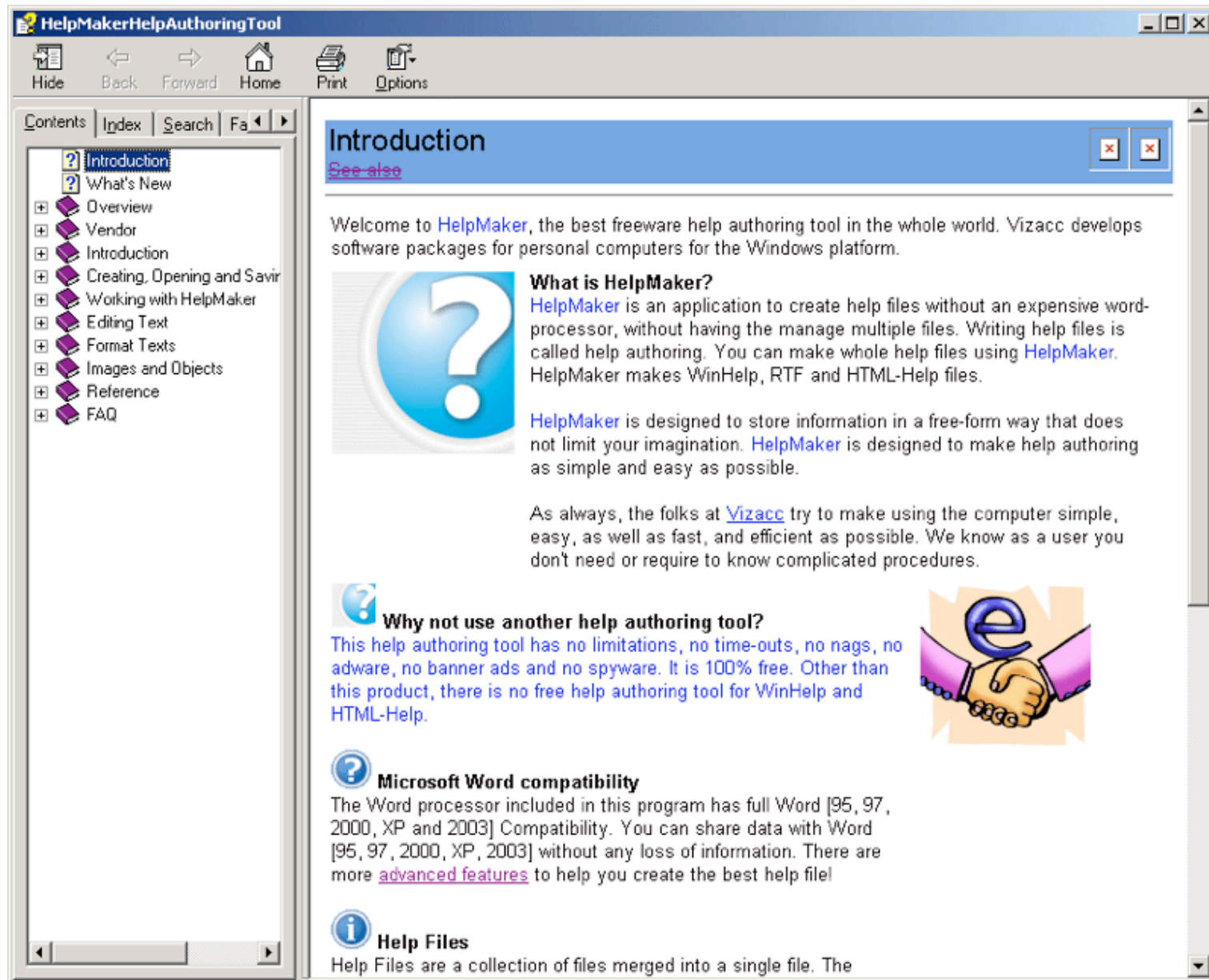
HelpMaker: html output



HelpMaker: winhelp output



HelpMaker help



Wiki: home

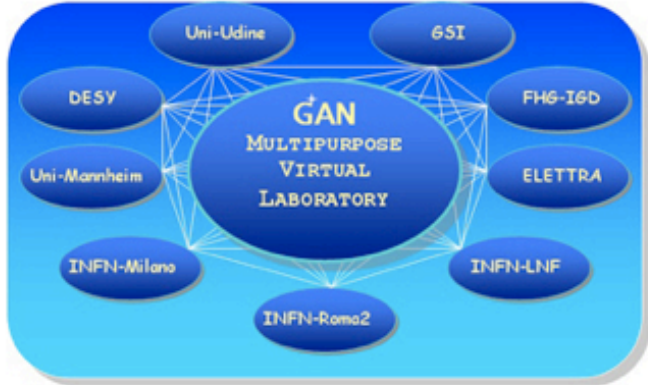
GANMVL Help | Main / HomePage browse

GANMVL Help | Main / Hom...

ganmvl help home page

View Edit History Attach Print

GANMVL Help Home
Edit Website Menu
Log Out
[edit SideBar](#)



The diagram illustrates the GAN Multipurpose Virtual Laboratory network. At the center is a blue oval labeled "GAN MULTIPURPOSE VIRTUAL LABORATORY". It is connected to eight surrounding blue ovals: Uni-Udine, 6SI, FHS-I6D, ELETTRA, INFN-LNF, INFN-Roma2, INFN-Milano, and Uni-Mannheim. These nodes are further interconnected, forming a complex network structure.

Welcome to GANMVL Help Site!

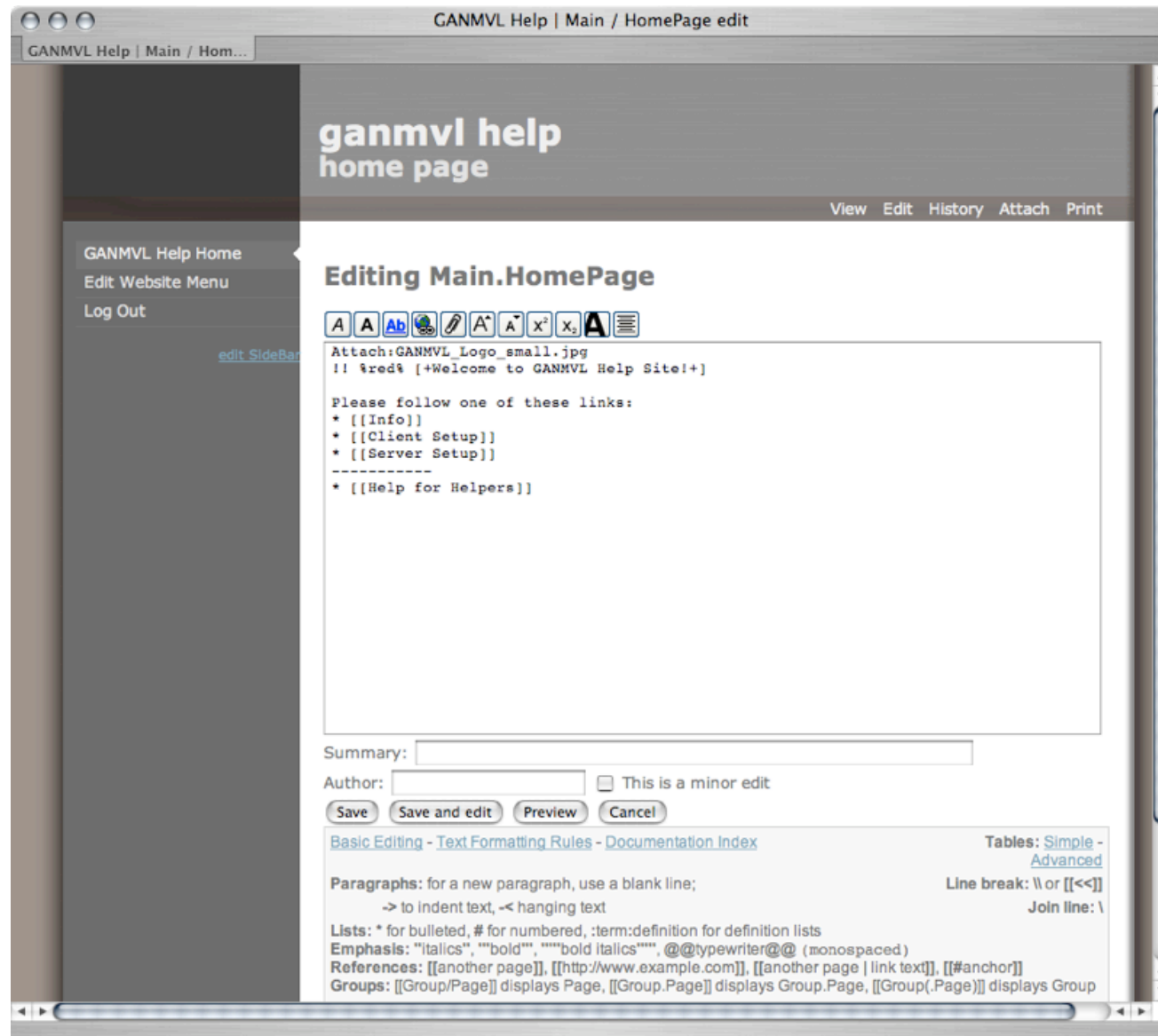
Please follow one of these links:

- [Info](#)
- [Client Setup](#)
- [Server Setup?](#)

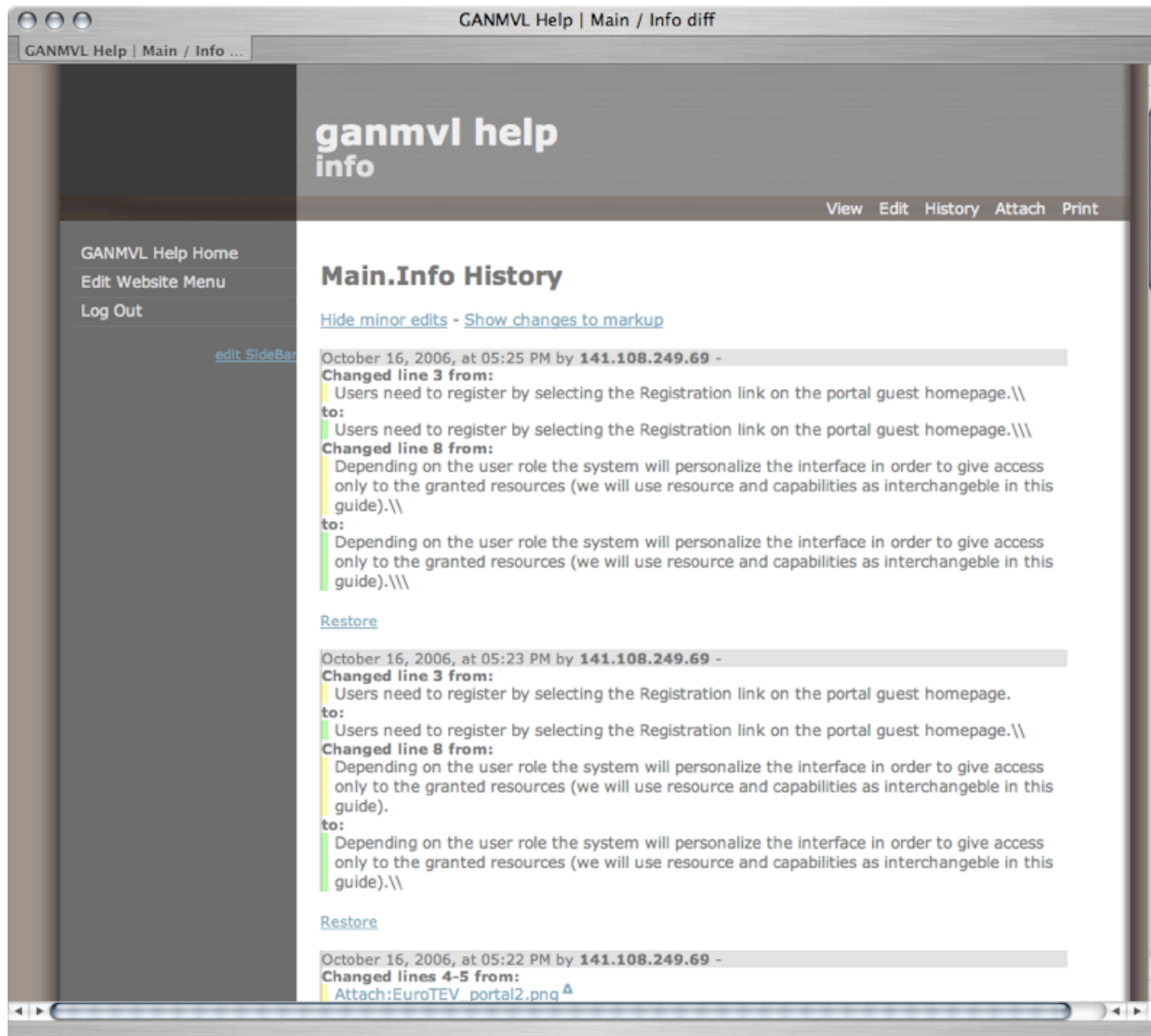
- [Help for Helpers](#)

GANMVL Collaboration.

Wiki: page editor



Wiki: history



Wiki: info (sample Wiki entry)

The screenshot shows a web browser window displaying the GANMVL Help Wiki. The browser's address bar shows the URL `https://mvpmeet1.desy.de:443/gridsphere/gridsphere?ps_action=gs_login`. The page title is "GANMVL Help | Main / Info browse". The main content area is titled "ganmvl help info" and includes a sidebar with links: "GANMVL Help Home", "Edit Website Menu", "Log Out", and "edit SideBar". The main text area is titled "User Guide" and contains the following content:

Users need to register by selecting the Registration link on the portal guest homepage.

Welcome to EUROTeV

28 European institutes have joined forces to participate in a Design Study for a Linear Collider in the TeV energy range. After the recommendation of the ITRP for the superconducting technology a worldwide effort has been started to realise the **International Linear Collider (ILC)** as a truly world-wide project under the guidance of the **Global Design Effort (GDE)**.

EUROTeV addresses some of the high ranking issues identified by the Technical Review Committee with the aim of delivering significant input to the ILC Conceptual Design Report (CDR) and thereafter the ILC Technical Design Report (TDR). EUROTeV will serve as a major branch of the European Design Team for the ILC.

The consortium of 27 institutes has submitted a bid in March 2004 to the Sixth Framework Program (FP6) of the European Commission, and subsequently received strong recommendations for funding.

EUROTeV comprises of the following scientific Work Packages:

- Beam Delivery System (BDS)
- Damping Rings (DR)
- Polarised Proton Sources (PPS)
- Diagnostics (DIAG)
- Integrated Luminosity Performance Studies (ILPS)
- Magnet and Stabilisation (METSAB)
- Global Accelerator Network Multipurpose Virtual Laboratory (GANMVL)

These activities are expected to be complemented by studies in the Americas and in Asia to enable the complete design of a linear collider in the TeV energy range. In addition, EUROTeV includes:

After registration the user can sign-in using the information received by email.

Depending on the user role the system will personalize the interface in order to give access only to the granted resources (we will use resource and capabilities as interchangeable in this guide).

The screenshot also shows a smaller version of the EUROTeV Portal interface within the main content area, which includes a "Registration" link and a "Login" form with fields for "User Name" (luciano) and "Password" (*****). The "Login" button is highlighted. Below the login form, there is a "Forgot your password?" link. The bottom of the screenshot shows the "GridSphere Portal" interface, which includes a "Logout" link and a "Welcome, luciano" message.

more about Wikis

- PDF generators exist
- pages can have restrictions in editing
- users can contribute
- multilanguage
- possibility to include math and other special editing features
- back up and mirroring (to remote GANMVL servers)
-

development

1. set up the main help Wiki server
2. defines users and their privileges
3. collect information from developers and publish the help basic structure
4. create mirrors on remote lab-servers

and then

- upgrading of pages and minor editing will be made by developers directly
- the help manager will routinely check the pages providing support to developers and users (FAQ, user based help)

help on gridsphere

Welcome Knowledge Management GAN Portal

LogBook Help Download

e-helpbook

Title	Category	Author	Location	Keyword	Last Post
The architecture, overview, 8.2006	Help	test1	desy	desy	Aug 28, 2006 12:47:19 PM
The architecture, overview, 8.2006	Help	test1	desy	desy	Aug 28, 2006 12:47:19 PM
Help System News	Help	busatoa	desy	ganmvl	Aug 23, 2006 11:35:15 PM
Station Administrator Guide	Help	busatoa	desy	ganmvl	Aug 23, 2006 11:34:48 PM
Labserver Administrator Guide	Help	busatoa	desy	ganmvl	Aug 23, 2006 11:33:57 PM
Frequently Asked Questions	Help	busatoa	desy	ganmvl	Aug 23, 2006 2:55:09 PM
User Guide	Help	busatoa	elettra	ganmvl	Aug 23, 2006 12:33:18 PM
Station Installation Guide	Help	busatoa	desy	desy	Aug 23, 2006 11:52:06 AM
Labserver Installation Guide	Help	busatoa	desy	ganmvl	Aug 23, 2006 11:40:19 AM
Client Installation Guide	Help	busatoa	desy	ganmvl	Aug 23, 2006 11:33:22 AM

[search](#)[next](#)[add new post](#)

Conclusions

- commercial e non-commercial help makers exist (with pros and cons) but...
- ...for the GANMVL a web based help (development system) is the natural choice
- the Wiki approach will provide flexibility for editing, security and lots of features