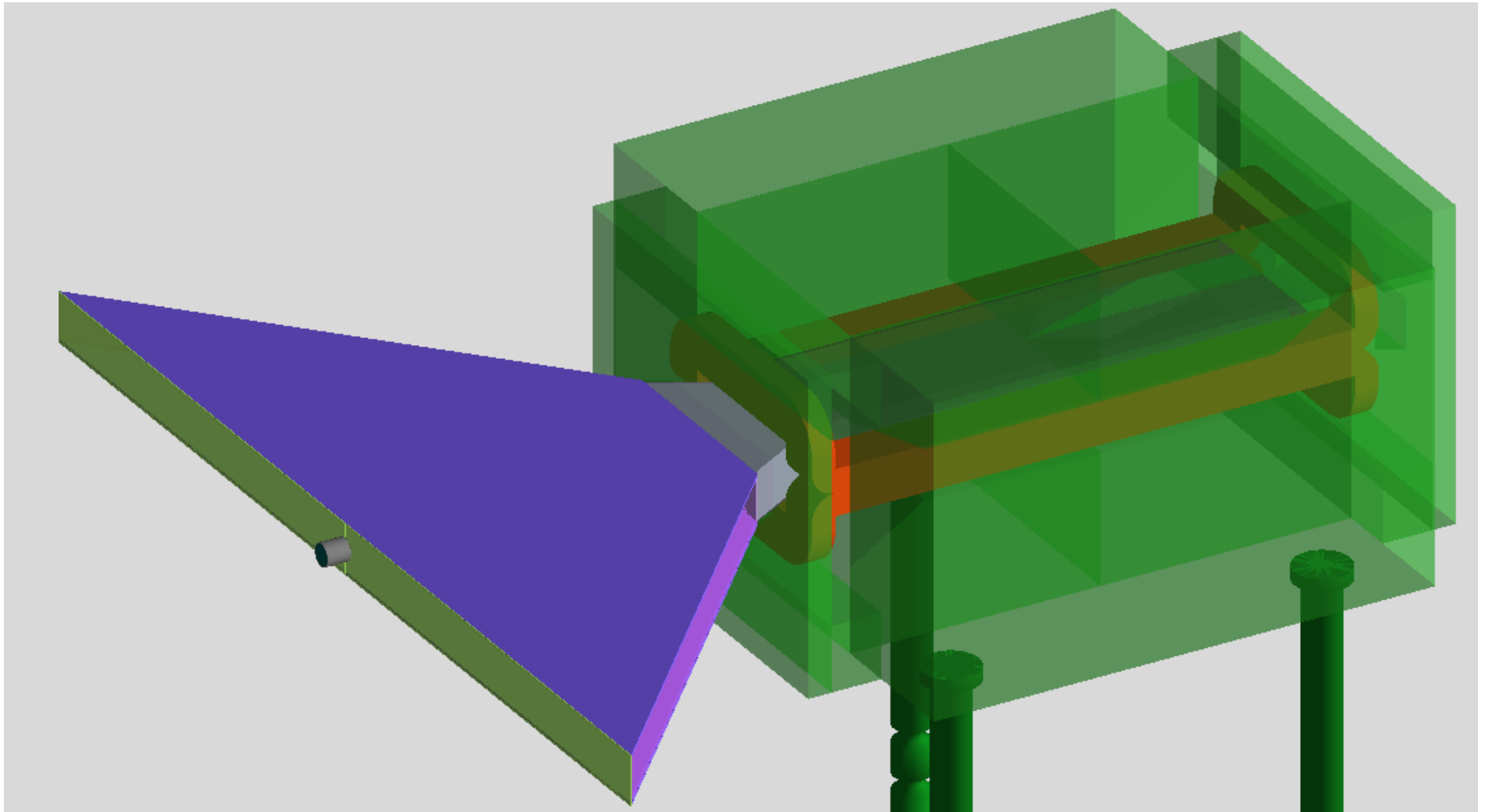


Vacuum chambers in Geant4

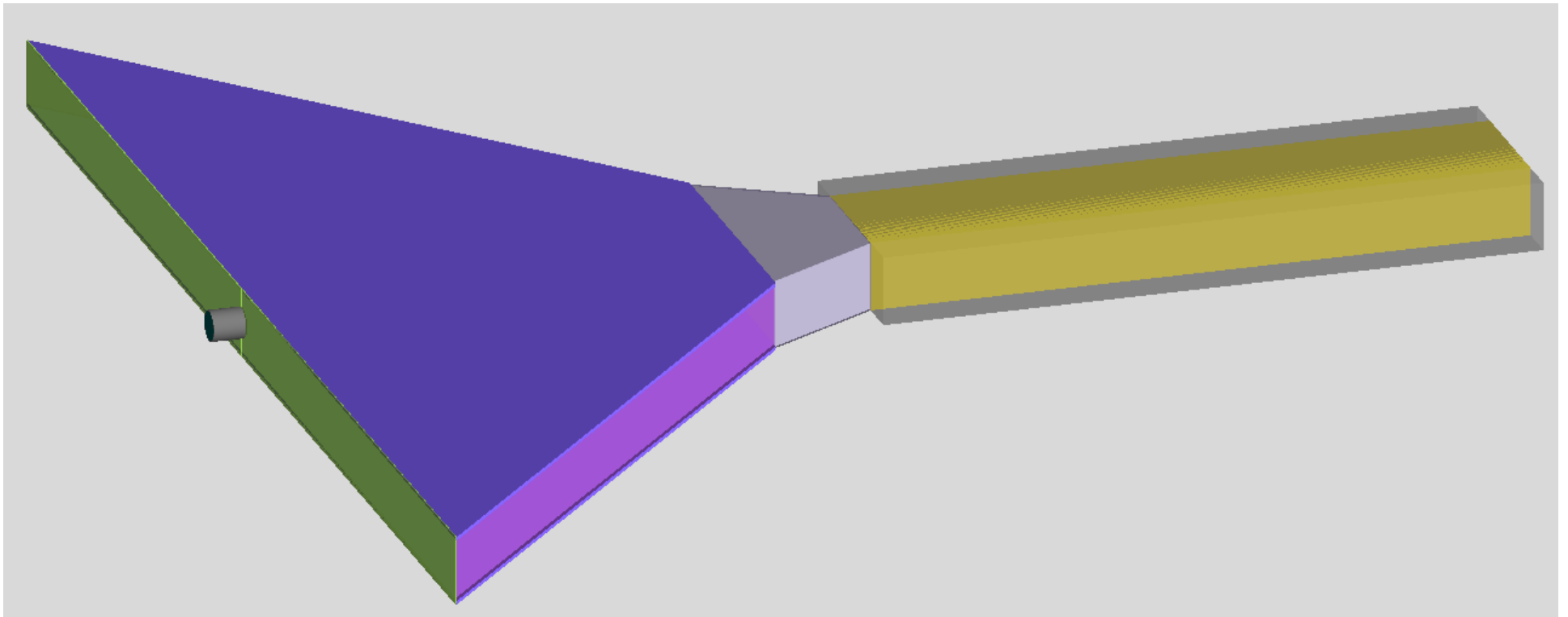
O. Borysov

LUXE meeting
DESY 04.06.2020

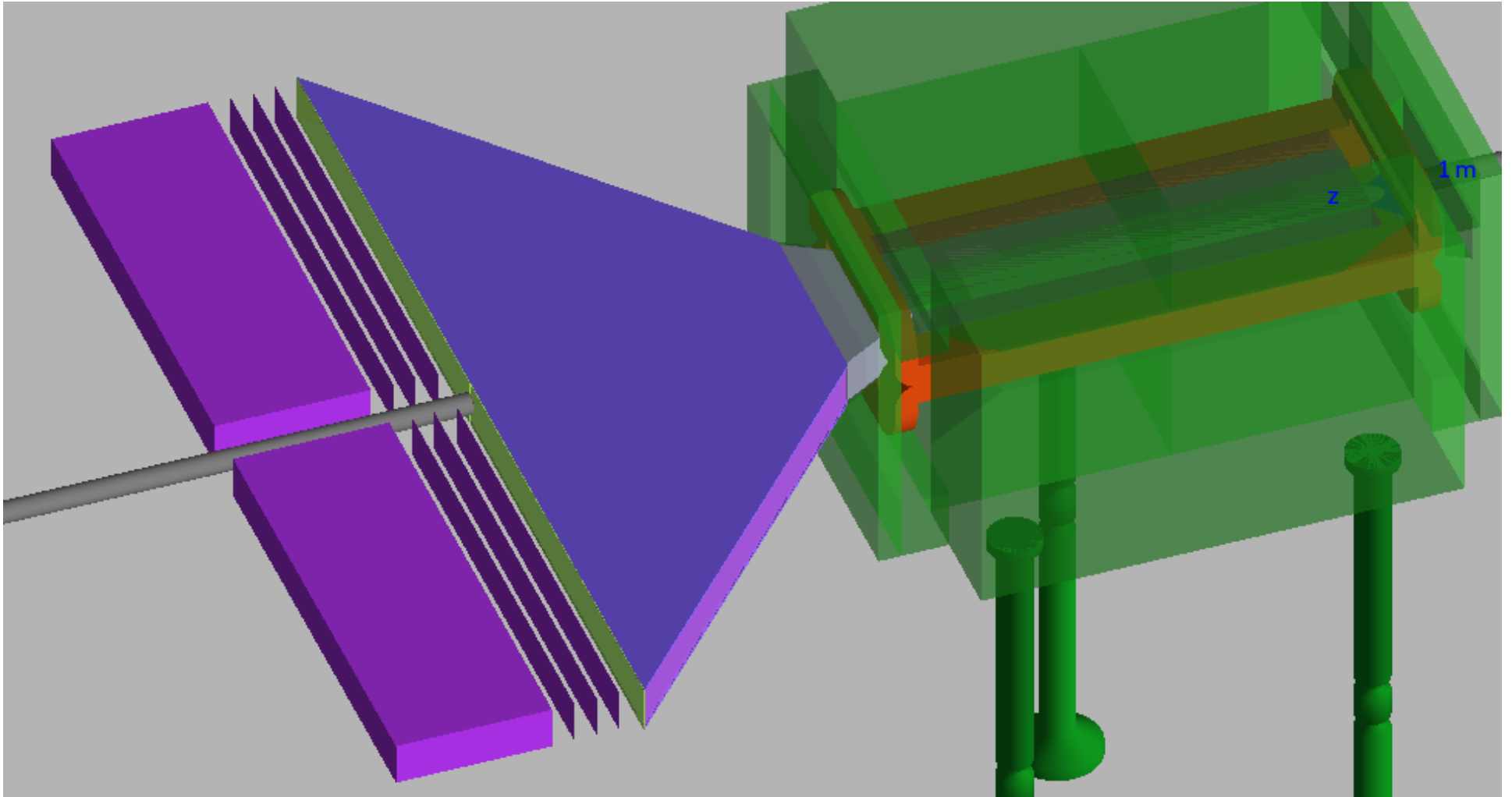
Vacuum chamber



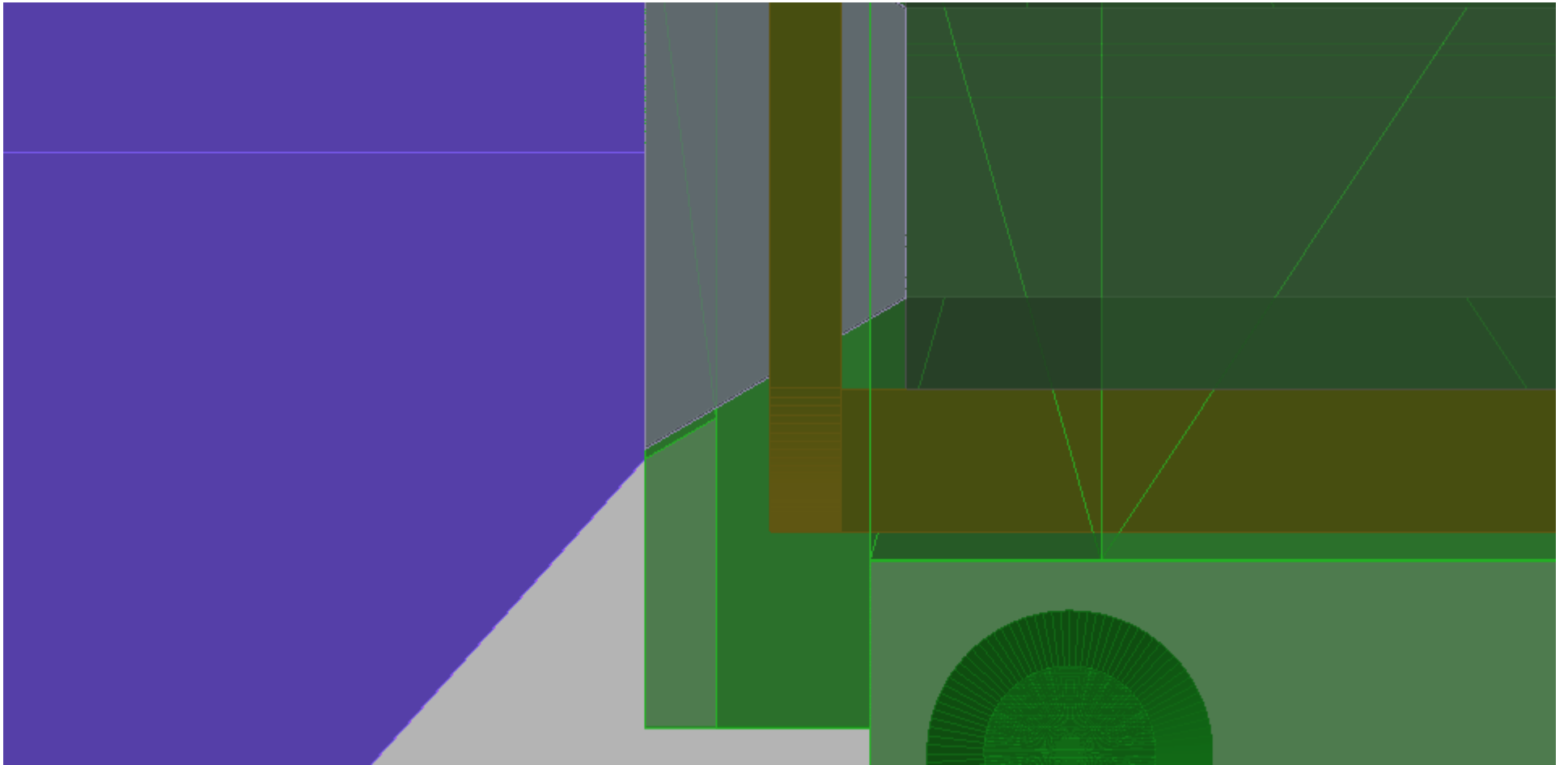
Vacuum chamber joined with the pipes
inside the magnet



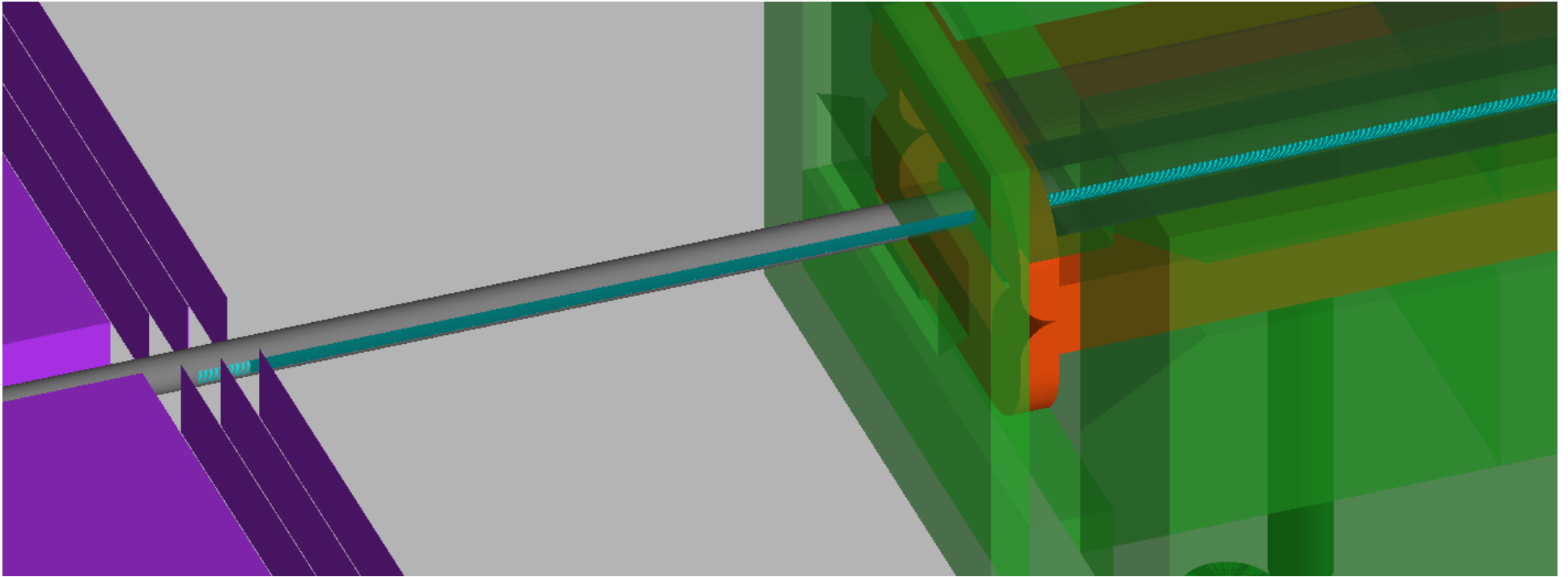
Vacuum chamber and OPPP detectors



Interface with the magnet



Windows are in lateral parts of the beam pipe



Check in simulation

- Simulate signal OPPP e^+e^- :
 - Compare vacuum chamber with windows in the beam pipe;
 - Influence of window thickness.