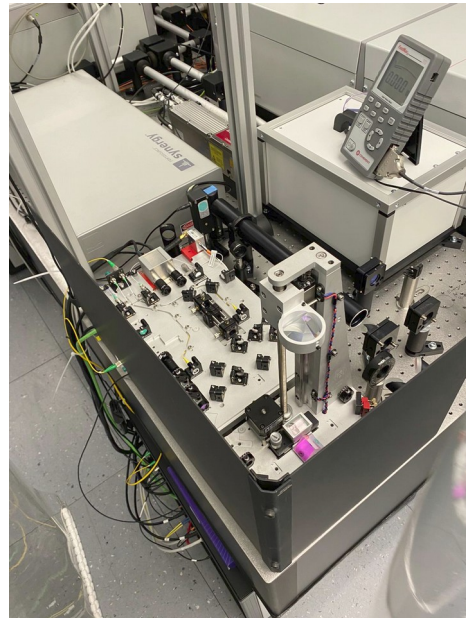
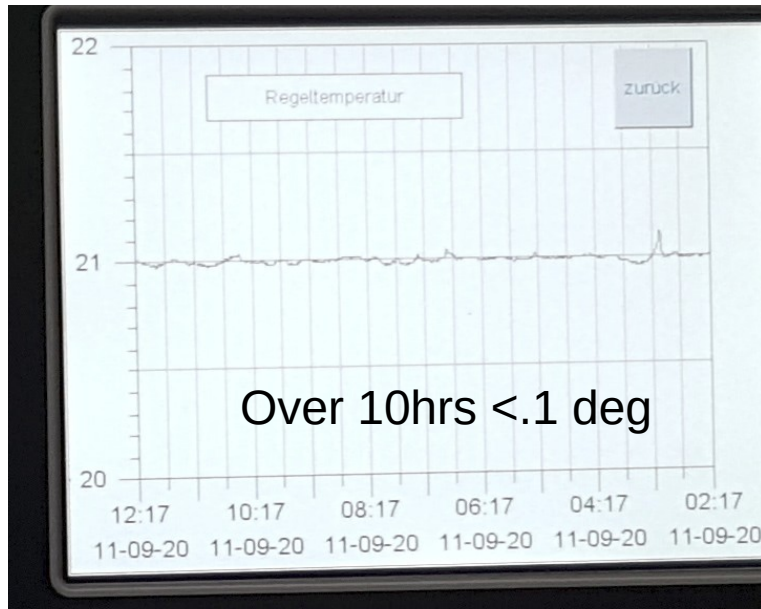


**Report: 18.09.2020**

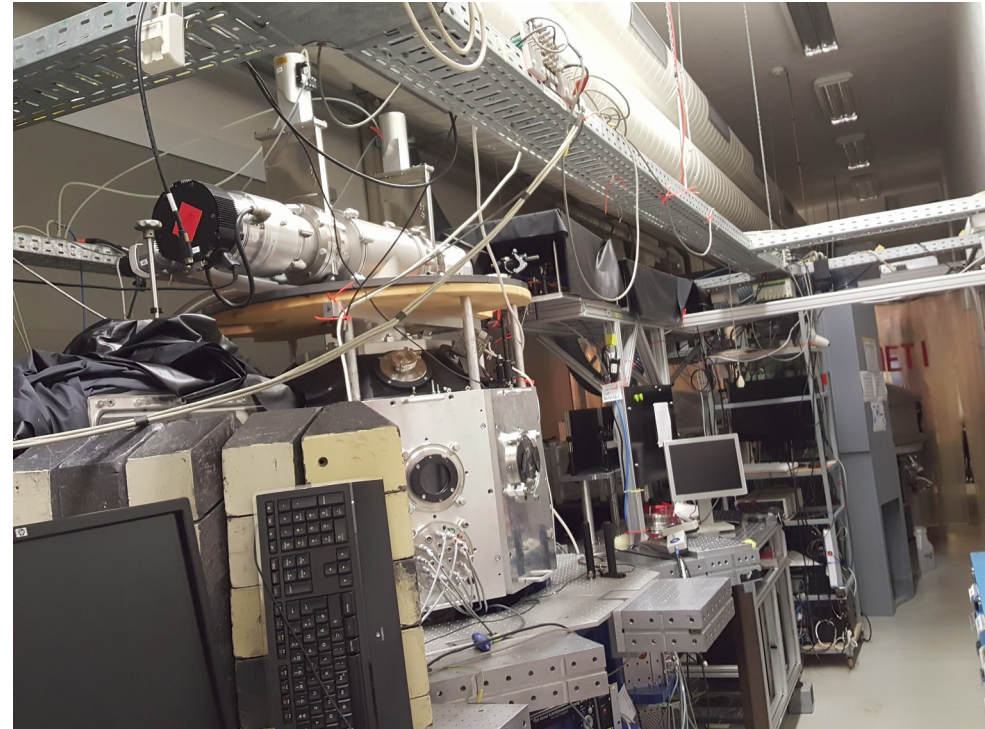
# Tour of HIBEF laser- 400 TW, Ti:Sa 10 Hz

- Discussion with Toma on various aspects of laser.
- Most importantly, laser stability: two main key factors in this story so far- oscillator synchronisation and stable klima control.
- This would be critical for LUXE laser as well. Since we are trying to have as less uncertainties as possible
- Also a possibility to join the pulse duration measurement with Toma using wizzler
- Some estimate for costing- 1.5 M Euro for the klima, clean room, electricity



# Tour of Jena laser 40 TW, Ti:Sa 10 Hz

- More clear view of interaction configurations. Louis will (has) report(ed) more
- Footprint and infrastructure- we know now what can be used and what new we have to buy in terms of optics/pump lasers
- Develop and test required diagnostics/automatisation at Jena before implementing in LUXE



# Tour of LUX laser:

---

**Tour of Lux laser- Andrea Maier group:**

- **May be next month**
- **To know more about automatisisation system**