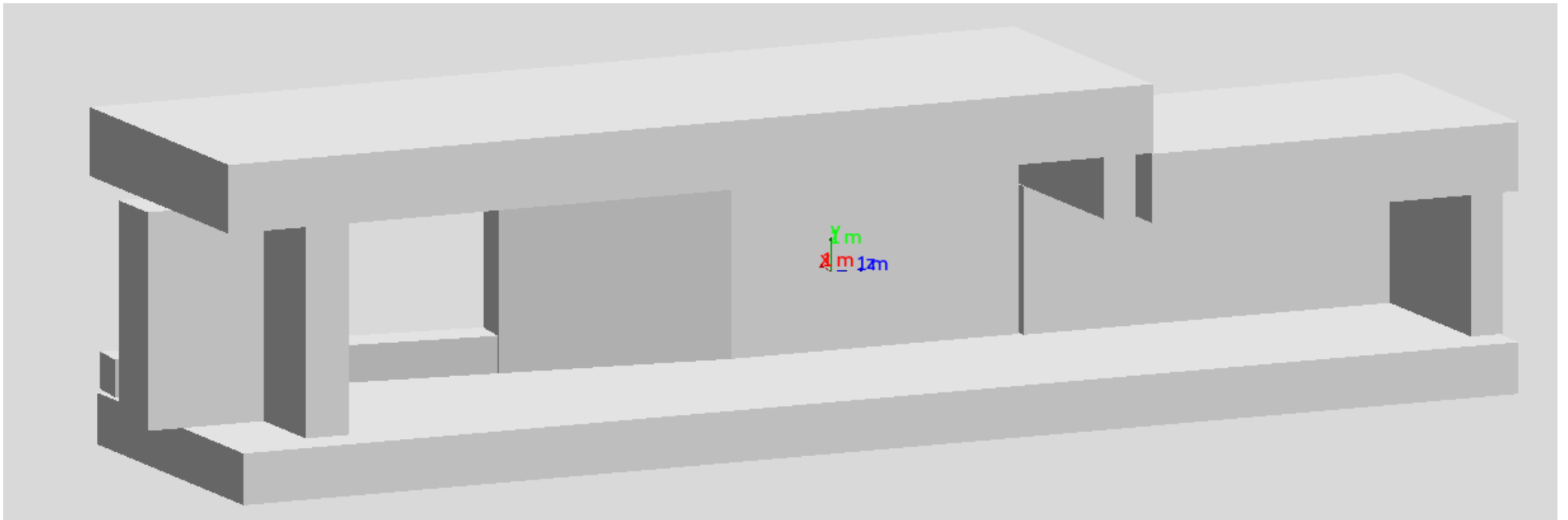
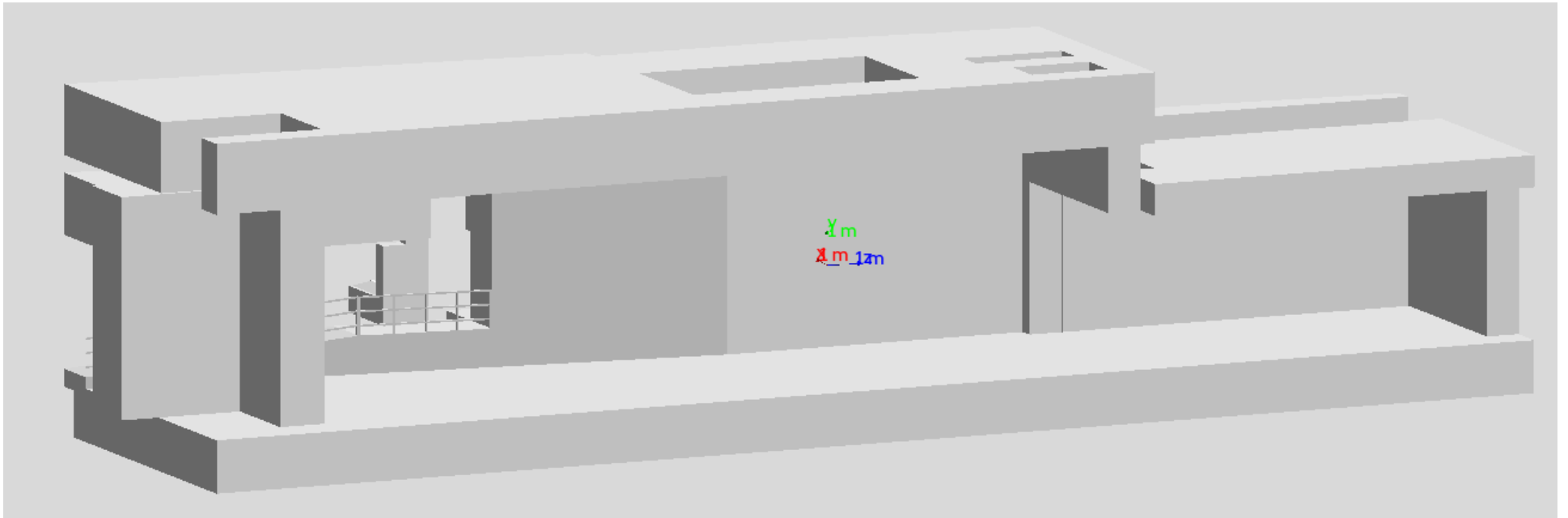


Update on LUXE GEANT4 Simulation.

Oleksandr Borysov

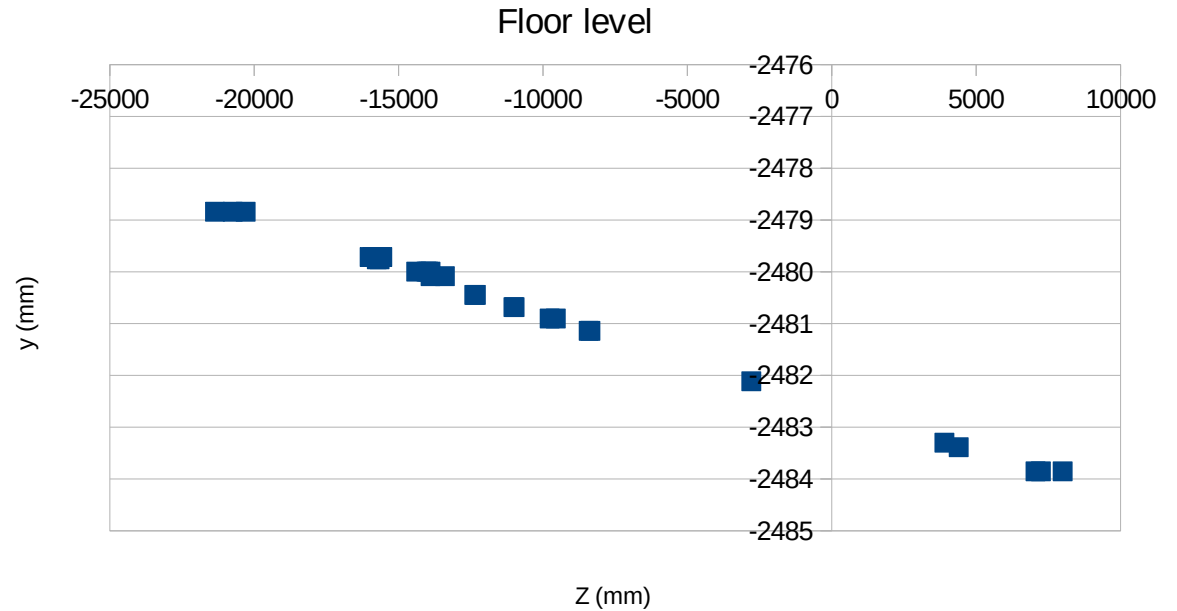
UG03 STL vs CSG



Floor in STL

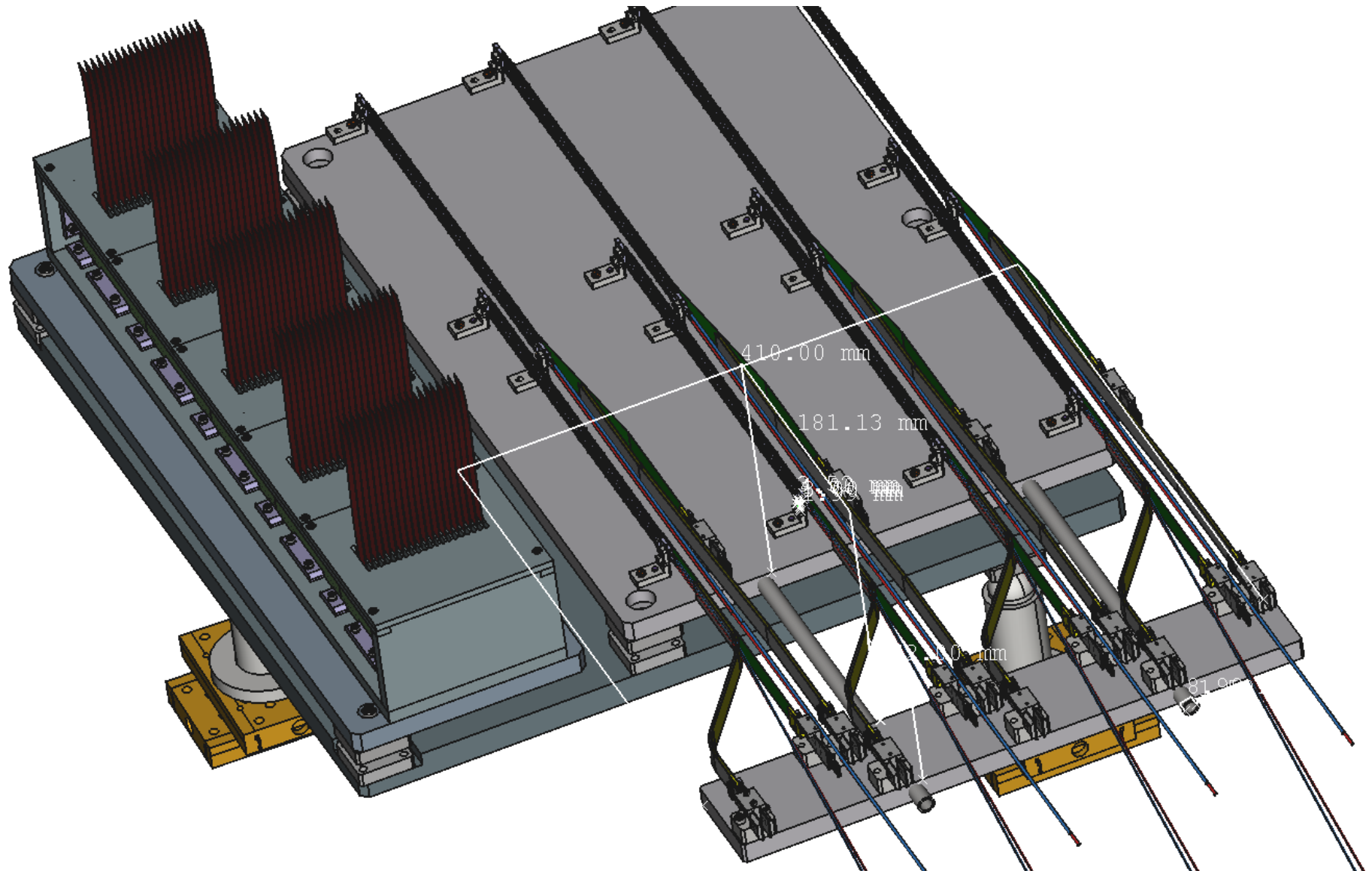
There are an angles

- in ZY plane: 0.01°
- In XY plane: 0.0012°

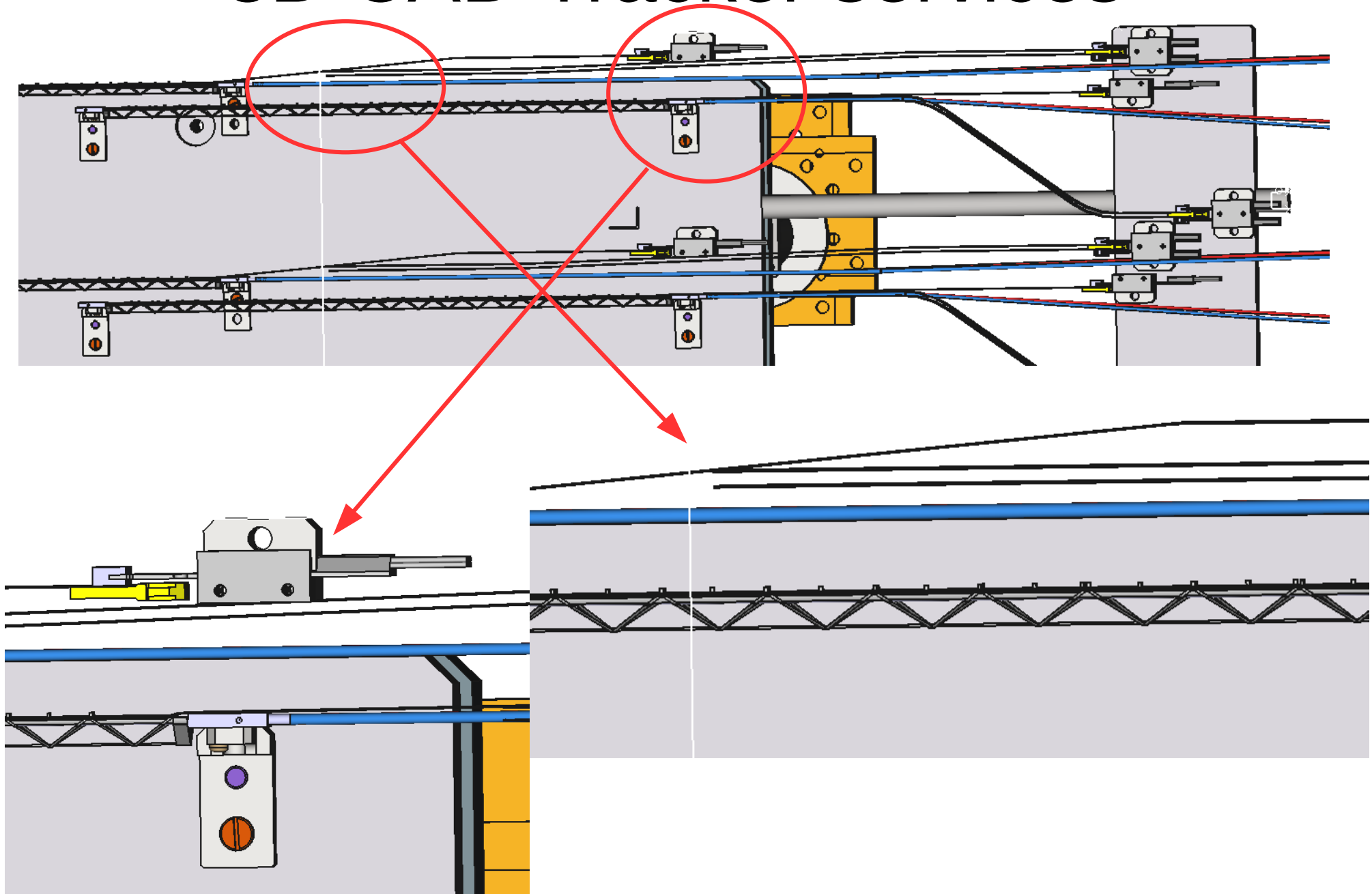


Ignore it in Geant4 and implement the floor flat and horizontal

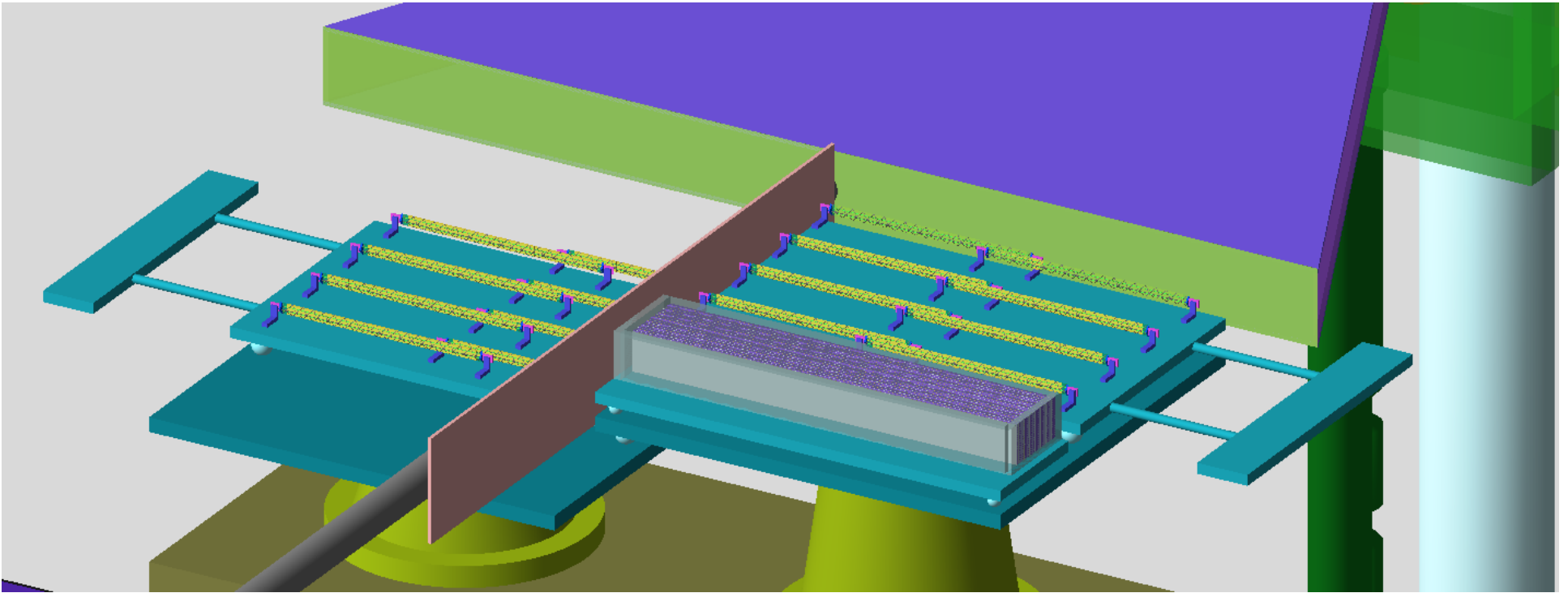
Tracker services supports 3D CAD



3D CAD Tracker services



Tracker services supports G4



Summary

- Switch to CSG implementation of the infrastructure
- Some clarification on the materials and geometry for tracker services would be helpful
- There are drawings of CALICE calorimeter, seems enough to implement more or less realistic G4 model