



An Example of NAF Usage in CMS

Adrian Perieanu

for

G. Anagnostou, S. Beranek, N. Heracleous, O. Hindrichs, A. Ostapchuk,
D. Pandoulas, F. Raupach, S. Schael, H. Weber, B. Wittmer

I. Physikalisches Institut B
2nd December 2010

Overview

- 1 How and Why do we use it?
- 2 Some feedback

How do we use it?

Group

- physics topics
- a user friendly tool (based on TTree)
- needed tests and files for: GRID and NAF
- runs analysis
- feedback

"Super" User/ "Active" User

NAF/GRID:

- scripts setup
- submit jobs
- copy & clean output files

NAF

- place to run jobs (*the magic box if one knows how to use it*)

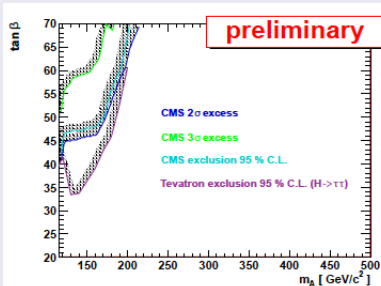
in our case:

- one super user is the one that:
 - knows how make and use NAF scripts (e.g. array tasks: `#$ -t 1-100`)
 - checks & transfers files
 - complains to NAF people if things do not work on NAF (he should also compliment them more when problems are fixed)

most important: knows the right people to ask for solutions (thanks² to B.S. & A.L.)

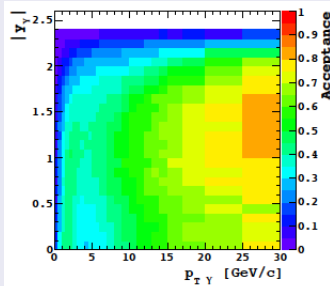
Why do we use it? Just two examples:

$\Phi^0 \rightarrow \mu^+ \mu^-$: the only in CMS



- results obtained by H. Weber
- only place to cover all analysis phase space: $\tan \beta$ and m_A

$\Upsilon \rightarrow \mu^+ \mu^-$: go to higher p_T



- results obtained by S. Beranek
- best place to try to understand polarization

in our case:

- in 6 month from now, the reasons why we will use NAF will be different
- important is to know how to use it and **to use it**

Some feedback:

if numbers, they are for "a" super user:

- we do not only need CPU we need also space:
 - would be nice to have some more *afs*-space to store our scripts ($\mathcal{O}(2GB)$)
 - would be very nice to increase the disk space quota ($\mathcal{O}(5TB)$)
- we do not only need CPU we need also (wo)men-power:
 - (my opinion)
there are too few experts/people on site that can jump to solve problems
– especially over week-end when the CPUs are not overloaded
- GRID access is working only one way (for me at least)
 - I can copy files on, but I cannot copy from
- soon there will be GB internet lines in our homes
 - we need to increase the transfer speed between NAF and institutes
(is by far faster to transfer a file from a disk in Aachen to my external USB2 hard driver when I am at CERN)
- ideas:
 - to avoid "accidents" in submitting jobs: user \leftrightarrow super user \leftrightarrow NAF
 - a *super users* meeting: use part of the workshop to keep people up to date
 - more reminders about down times