

Atlas Germany Computing Operations F2F .

DDM

Cedric Serfon & Kai Leffhalm

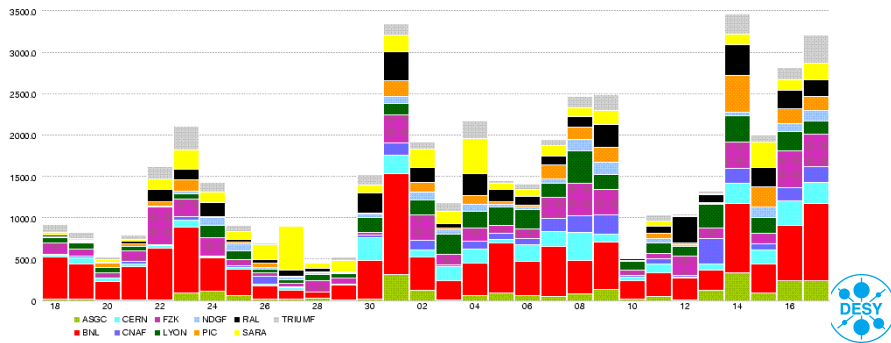
Atlas Germany Computing F2F

Desy, Zeuthen , July 19, 2010



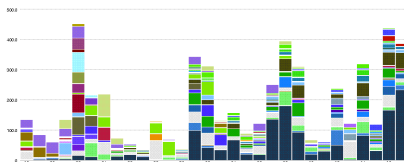
Stats overview

- > Overall 97% efficiency
- > 185MB/s transfer rate in the cloud
- > Only 5 spacetokens sites beneath 50% in the last 30 days \Rightarrow These had longer (unscheduled) downtimes
- > A great part of the errors are from the cooling problem at T1

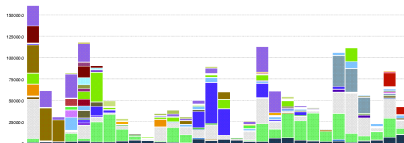


Graphs

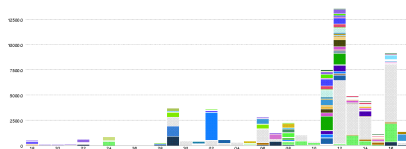
> The throughput in MB/s



> The throughput in #Files



> The error in #Transfers



- > The error rate started to increase massively due to T1 cooling problem
- > German Cloud was an example for a good working cloud



GridKa Problems

- > Cooling failure reason for a total breakdown
- > Recovery took quite some time
- > After recovery another hardware problem in a pool
 - User jobs failed \Rightarrow There was a discussion why analysis queue wasn't disabled from the beginning
- > Still ongoing: might mean a data loss of some 4000 files
- > Recovery of files for urgent production started



Spacetoken Situation

- > Now, in general no spacetoken near to full
- > Several sites increased space tokens end June/start of July
- > Mismatch from srm and dq2 only in GoeGrid \Rightarrow Dump already send, dark data search will start this week
- > Wuppertal might be a candidate for a dark data search too
- > Cyfronet mismatch due to missing pools

Atlas model for T2

- > 49 % DATADISK
- > 32 % MCDISK
- > 11.5 % GROUPDISK
- > 5 % SCRATCHDISK
- > 2.5 % PRODDISK

Atlas model for T1

- > 58 % DATADISK
- > 18.5 % MCDISK
- > 6.5 % GROUPDISK
- > 2.5 % SCRATCHDISK
- > 5 TB for HOTDISK
- > 13% Buffers for TAPE



News (from the SoftwareWeek)

- > Deletion service was reviewed and rewritten
 - Was done due to performance problems evolving at the horizon
 - Will be available after the holiday season
- > Consistency service is further automated
 - Will be put into service after holiday season
 - Should be easier to mark bad files and start cleaning up pool losses
- > Popularity service is nearly ready to work with new deletion service
- > New distribution models are discussed
 - PD2P - Panda dynamic distribution placement is working in US

