

First measurements with alpha source

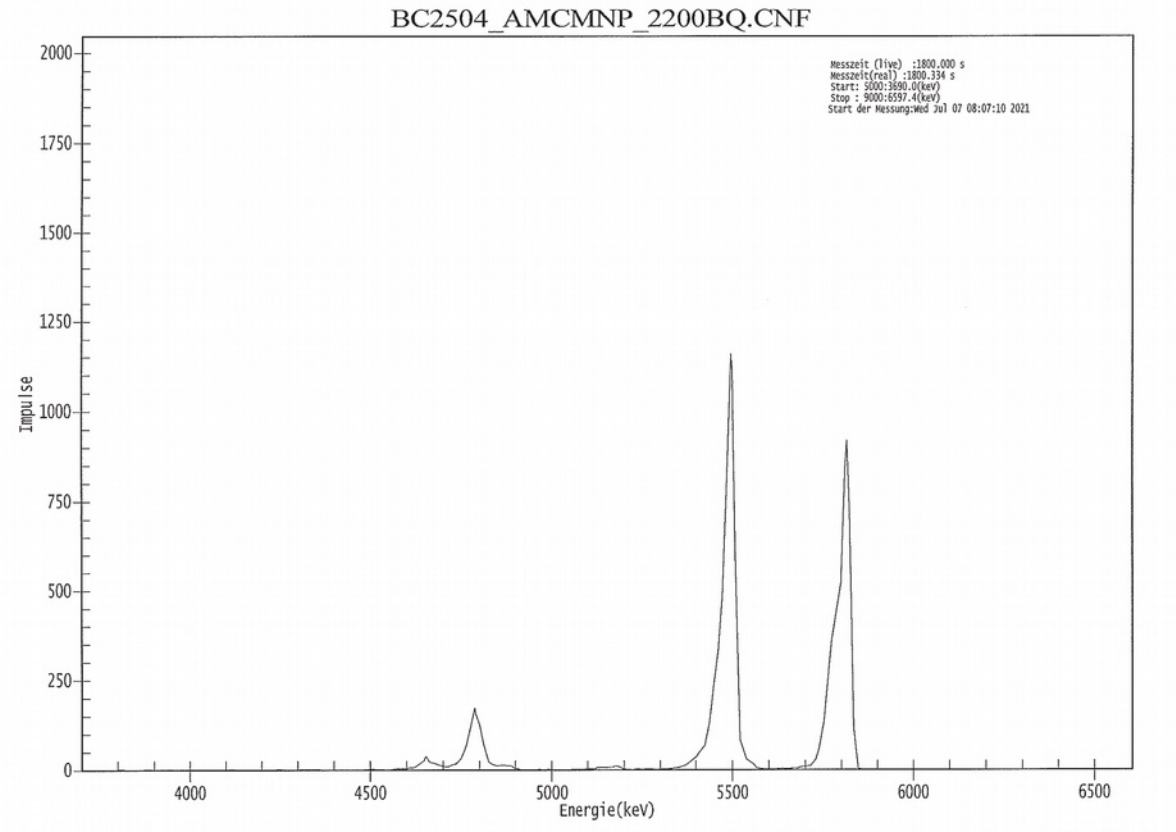
Mauro Morandin - INFN Padova
for the LUXE PD group

work performed mainly by D. Pantano

14 October 2021

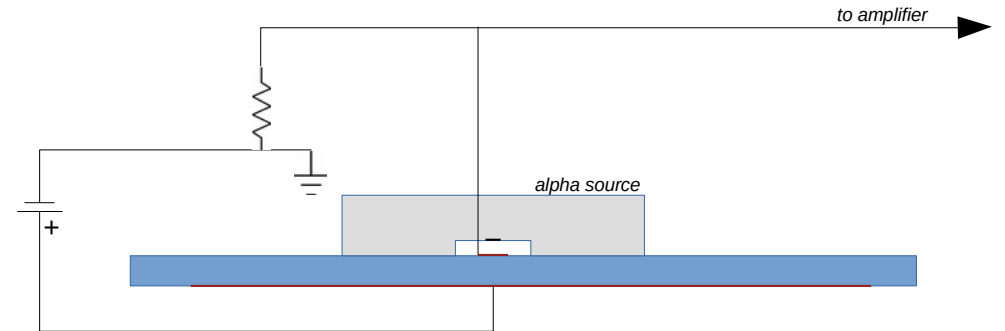
Alpha source

- ^{241}Am (1000 Bq)
 - 5.486 MeV (85%)
 - 5.443 MeV (13%)
 - 5.388 MeV (2%)
- ^{244}Cm (1000 Bq)
 - 5.765 MeV (23%)
 - 5.806 MeV (77%)
- ^{237}Np (200 Bq)
 - 4766 MeV (9%)
 - 4771 MeV (23%)
 - 4788 MeV (48%)



Setup

- HV up to 1000 V
- Sapphire 110 μm (Wuppertal)
- charge amplifier calibrated to 10 mV/fC ($1\text{mV} = 624 e^-$)



First results

HV (V)	Signal (mV)	Charge (e-)	CCE
650	11.70	7,301	3.94%
750	14.85	9,266	5.00%
850	17.30	10,795	5.83%
950	19.60	12,230	6.60%

