

W-plate for LUXE

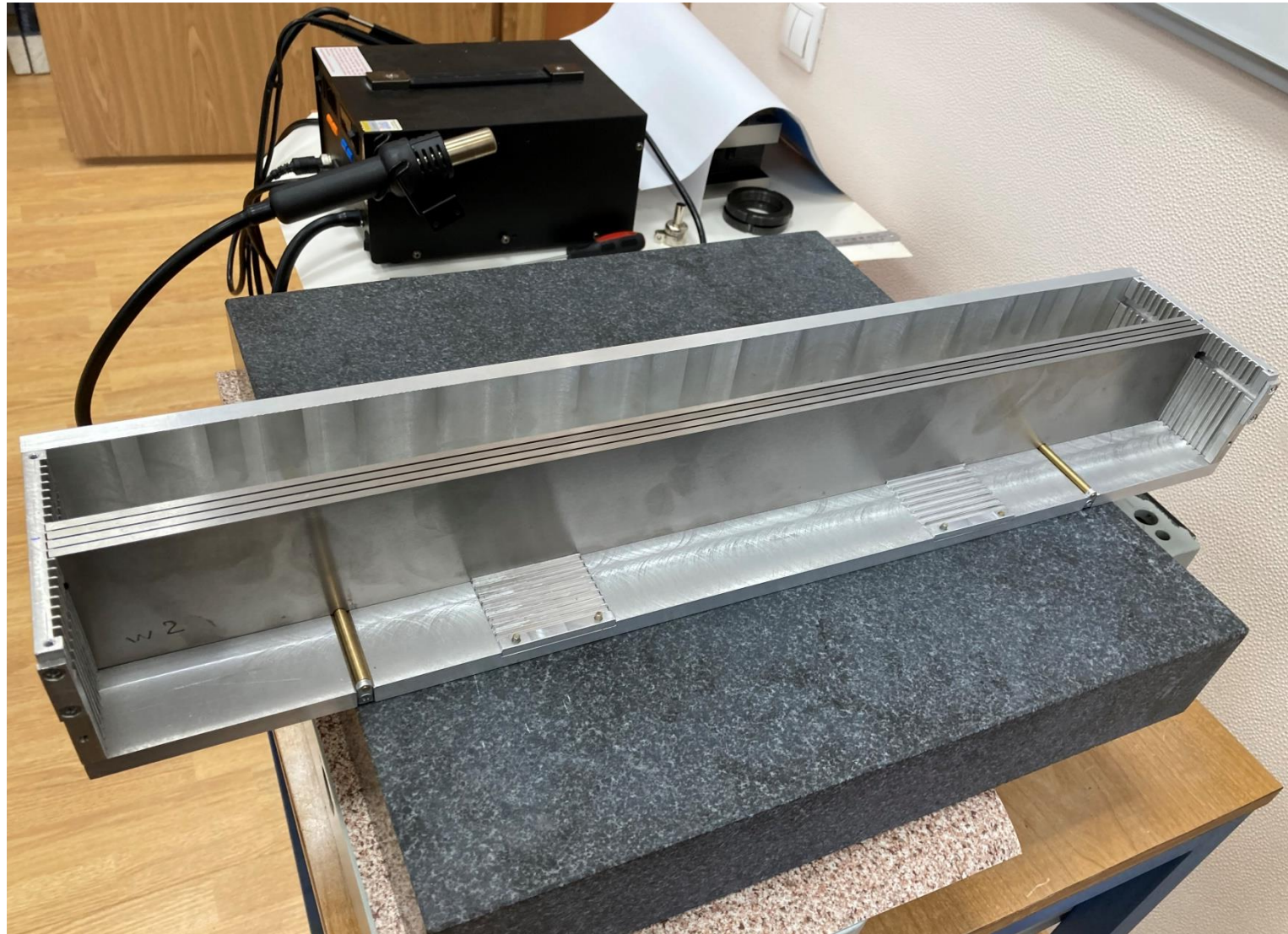
16 december 2021

Инв. № подл.	Подп. и дата	Взам. инв. №	Инв. № дубл.	Подп. и дата	Справ. №	Перв. примен. 3257.002.00									
<div style="display: flex; justify-content: space-between; align-items: center;"> <div style="border: 1px solid black; padding: 5px; transform: rotate(180deg);">3257.002.01</div> <div style="text-align: right;"> $\sqrt{Ra\ 3,2}$ </div> </div>															
<p>1*Размер для справок. 2 Общие допуски по ГОСТ 30893.1: H14, h14, ±IT14/2. 3 Острые кромки притупить.</p>															
3257.002.01															
Поглотитель				<table border="1" style="width: 100%; border-collapse: collapse;"> <tr> <td style="width: 10%;">Лит.</td> <td style="width: 10%;">Масса</td> <td style="width: 10%;">Масштаб</td> </tr> <tr> <td></td> <td style="text-align: center;">2,1</td> <td style="text-align: center;">1:2</td> </tr> <tr> <td colspan="2">Лист</td> <td>Листов 1</td> </tr> </table>			Лит.	Масса	Масштаб		2,1	1:2	Лист		Листов 1
Лит.	Масса	Масштаб													
	2,1	1:2													
Лист		Листов 1													
КО ЛЯП ОИЯИ															
Копировал _____ Формат А4															

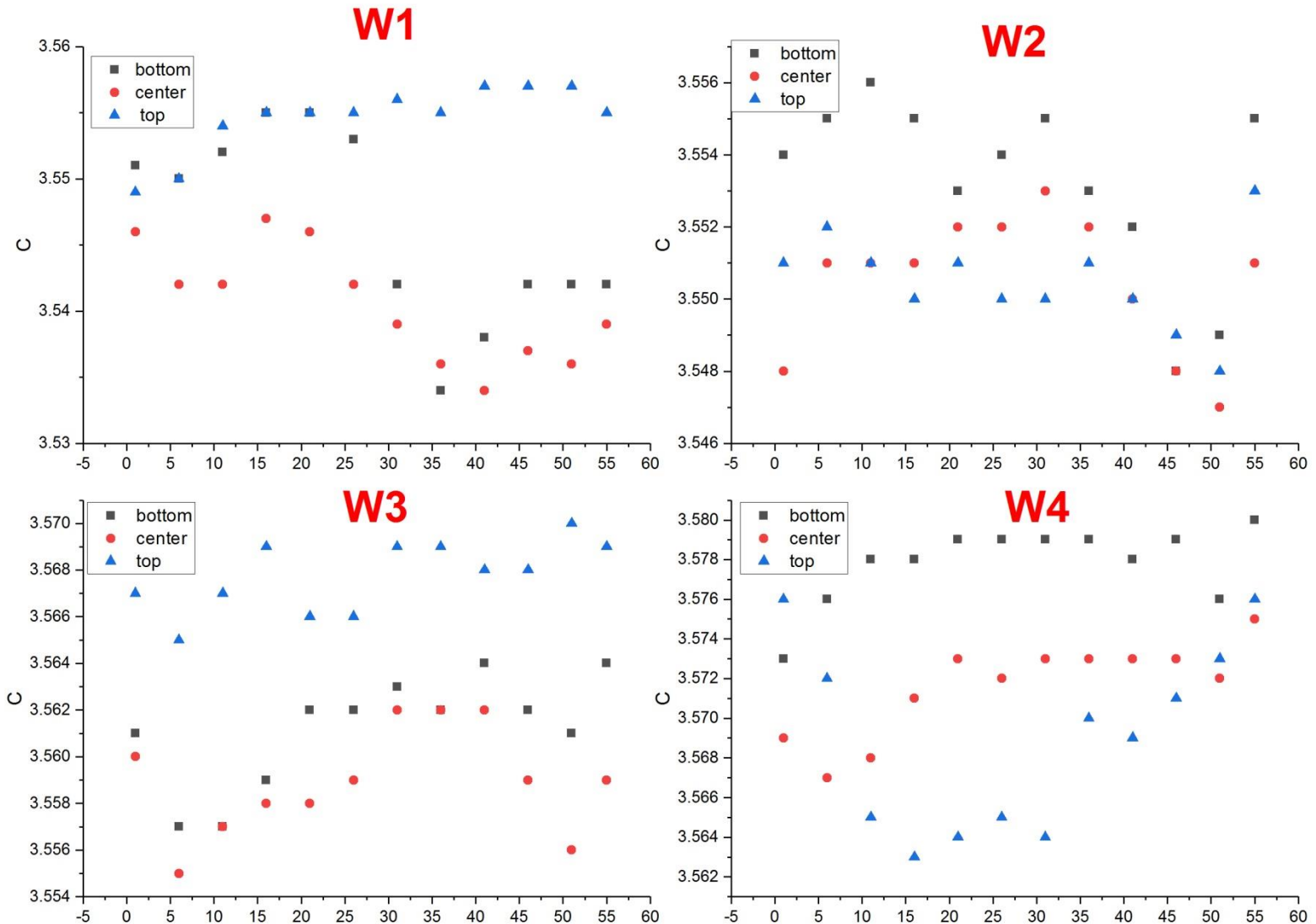
5 W absorber plates
were ordered.

Dimension 556x63x3.5 mm

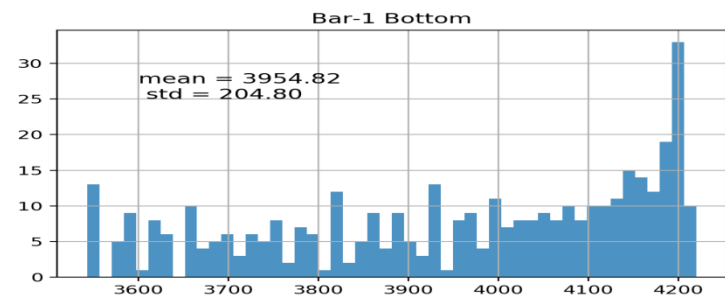
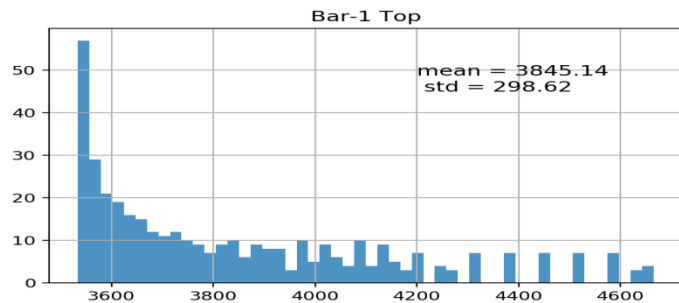
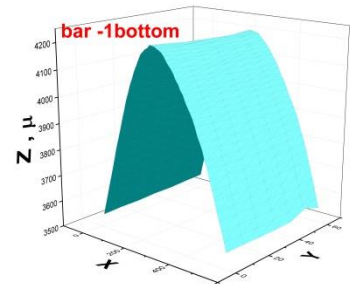
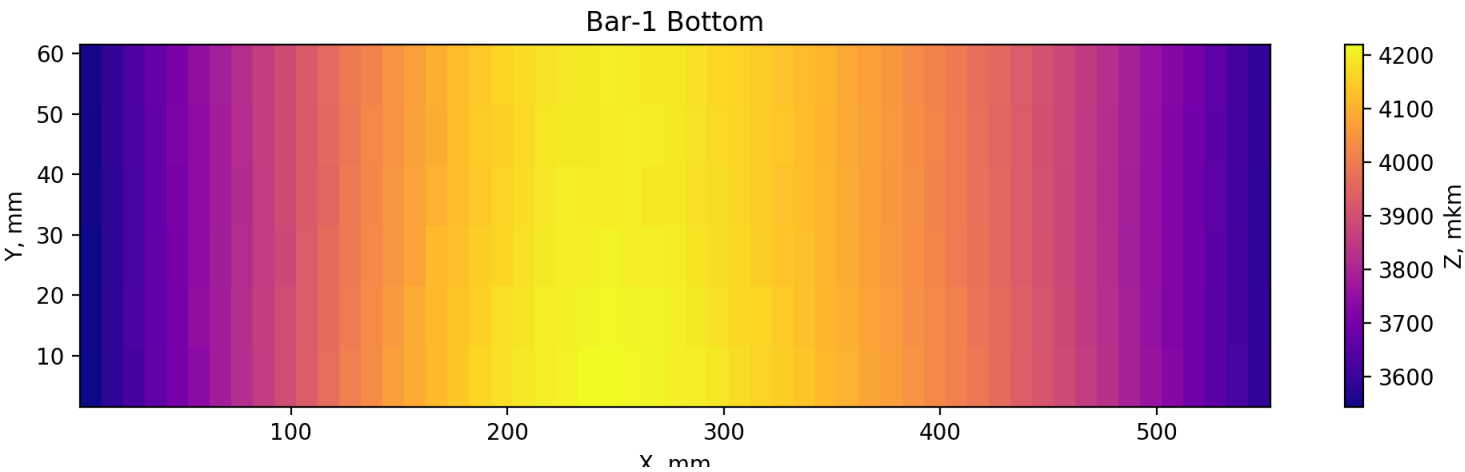
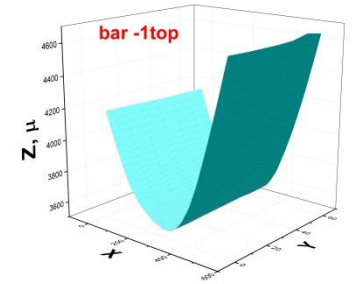
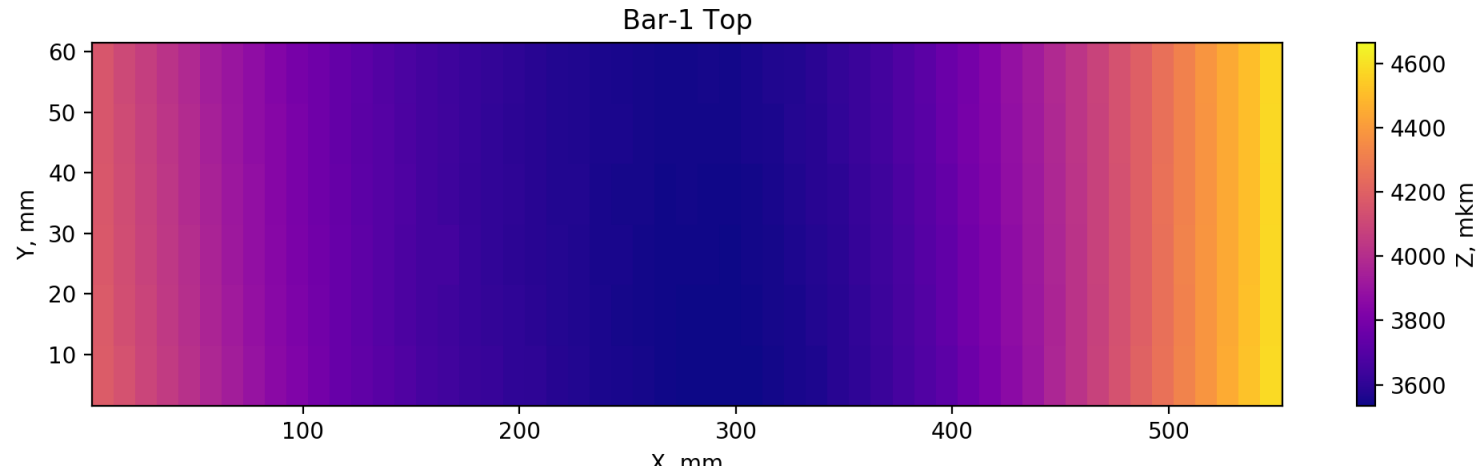
4 w-plates in frame



W-plate Thickness, mm

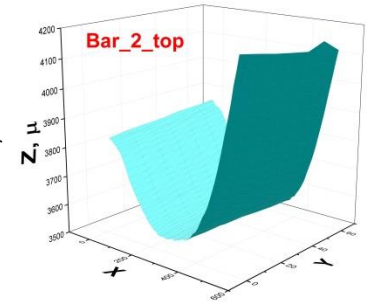
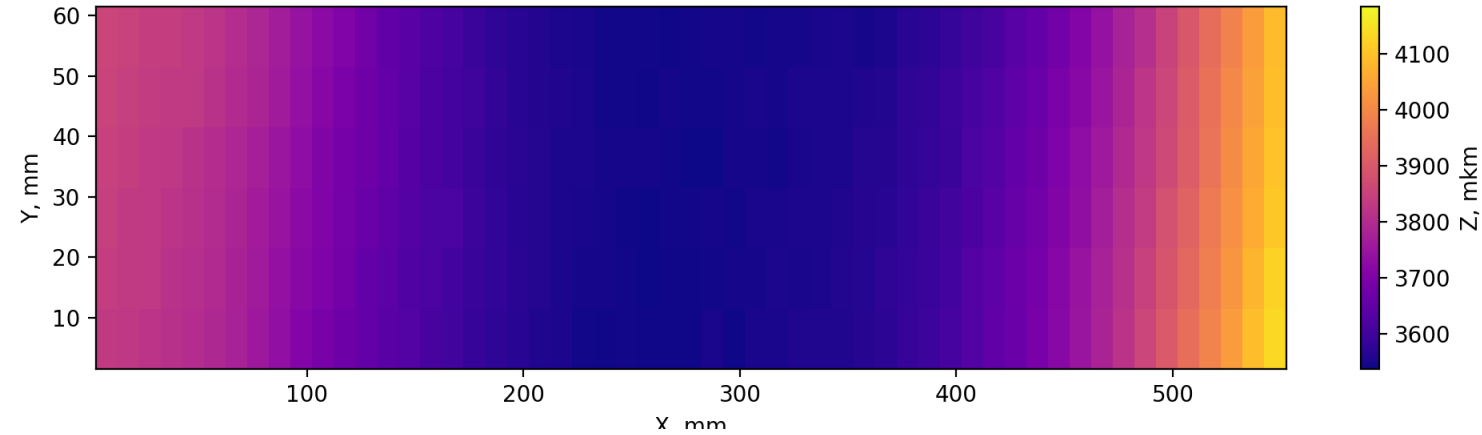


Max deviation W1

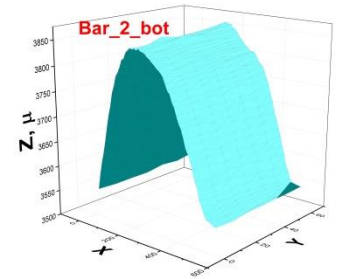
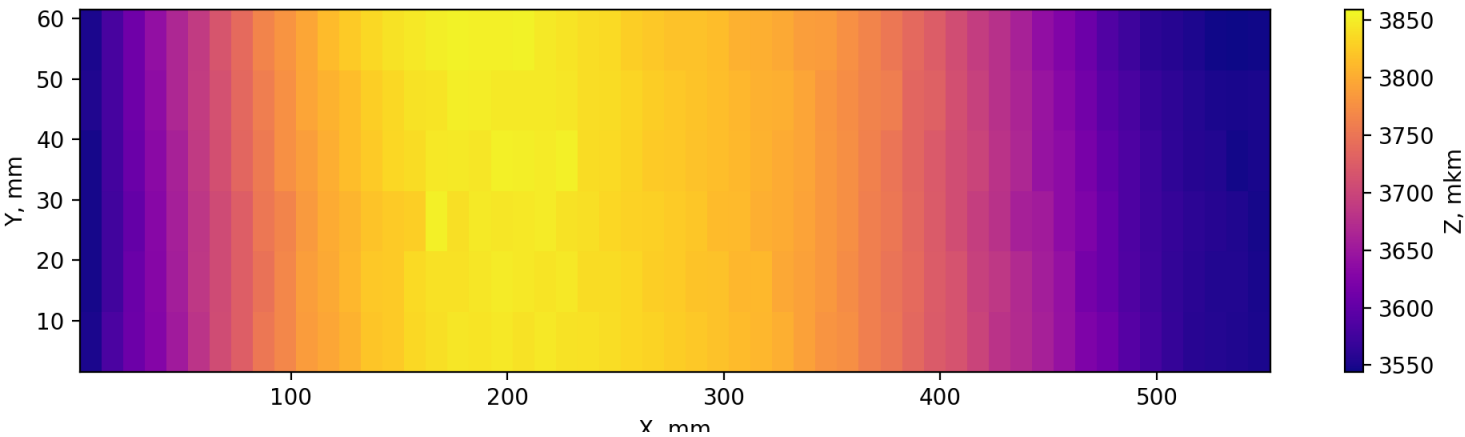


Max deviation W2

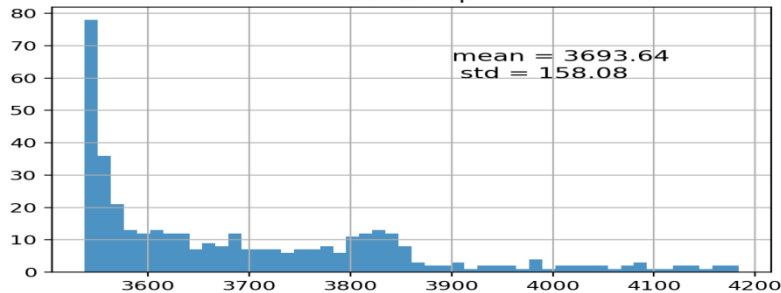
Bar-2 Top



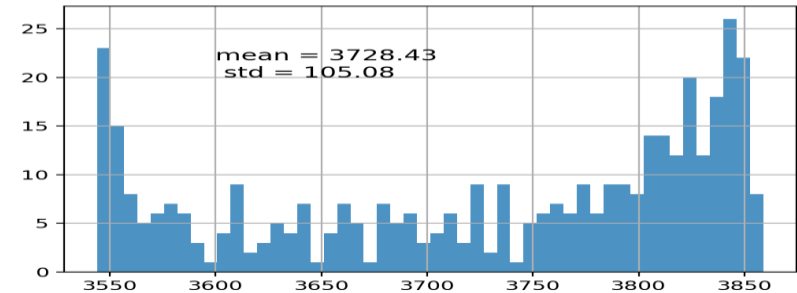
Bar-2 Bottom



Bar-2 Top

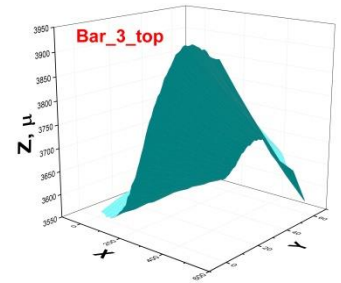
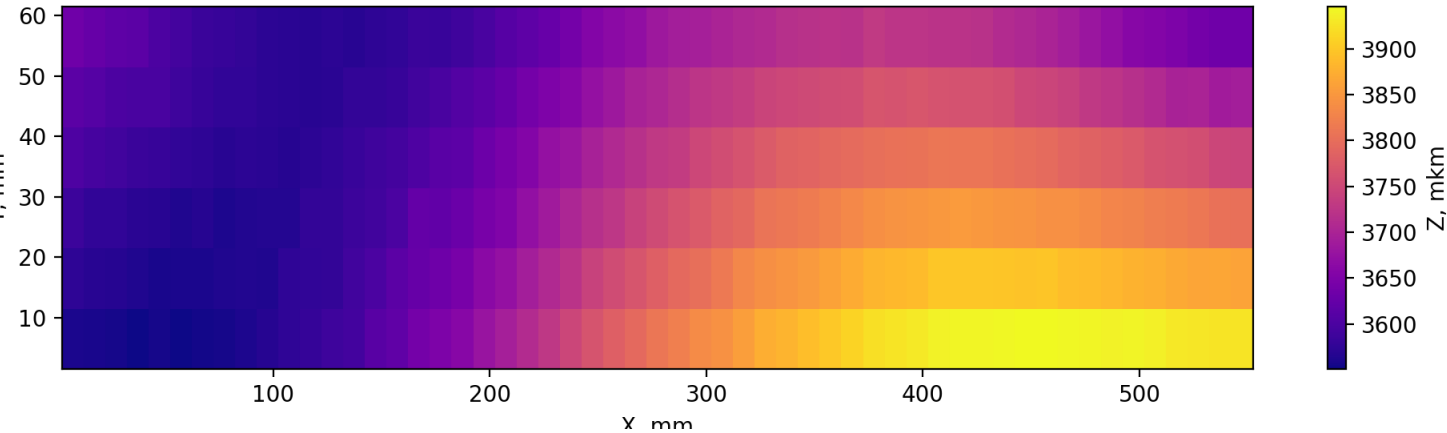


Bar-2 Bottom

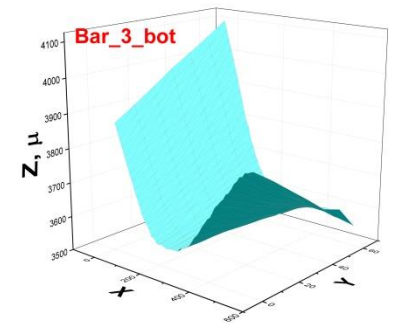
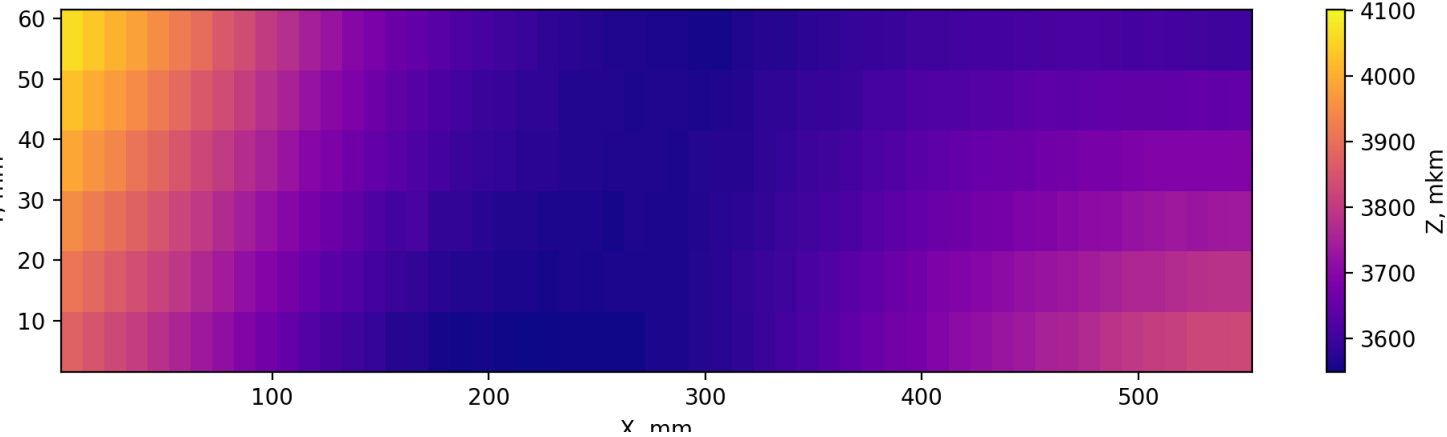


Max deviation W3

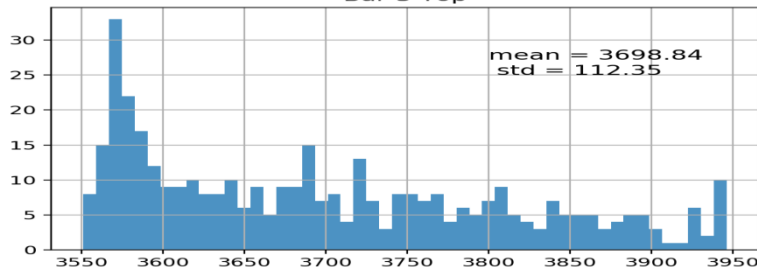
Bar-3 Top



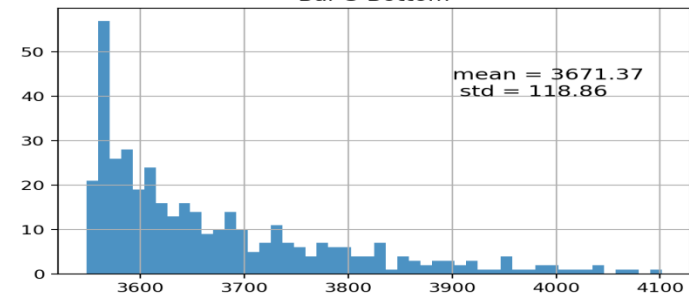
Bar-3 Bottom



Bar-3 Top

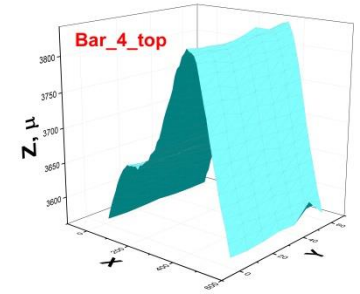
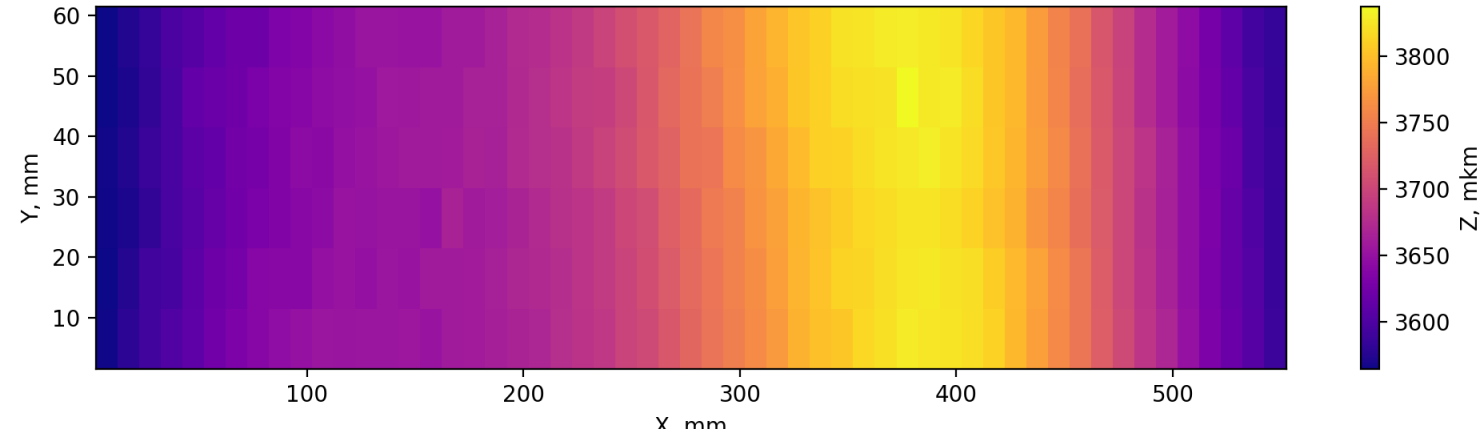


Bar-3 Bottom

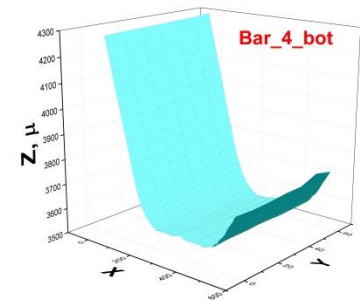
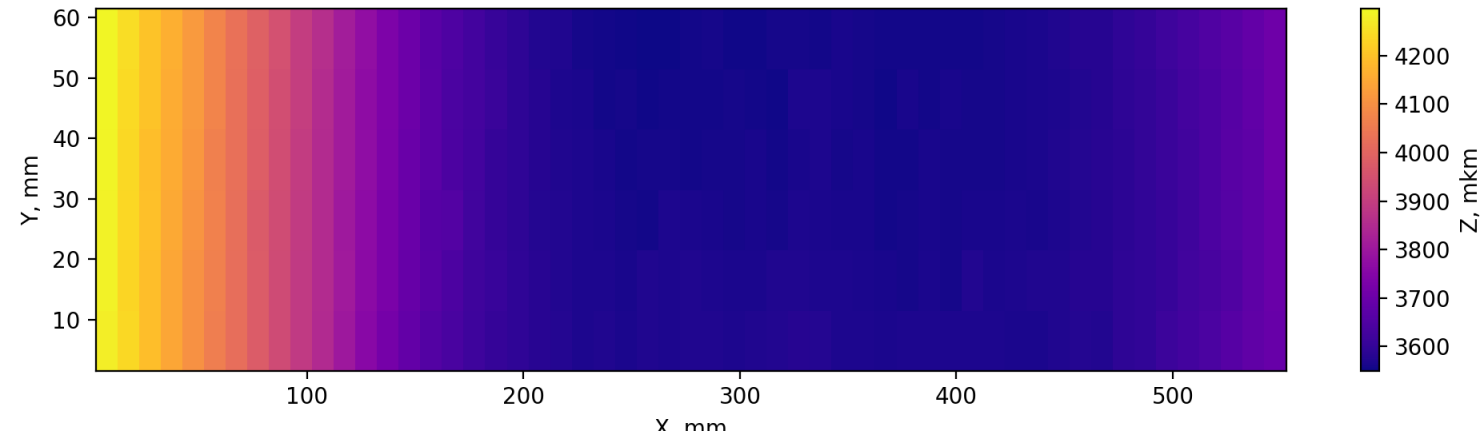


Max deviation W4

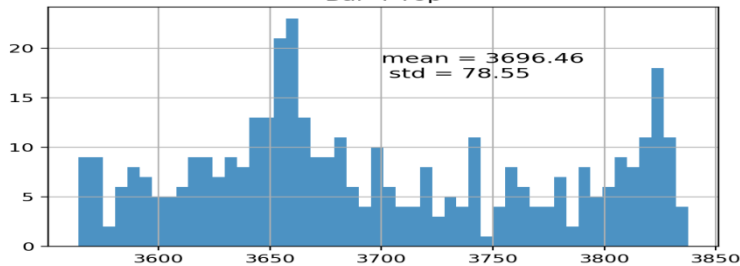
Bar-4 Top



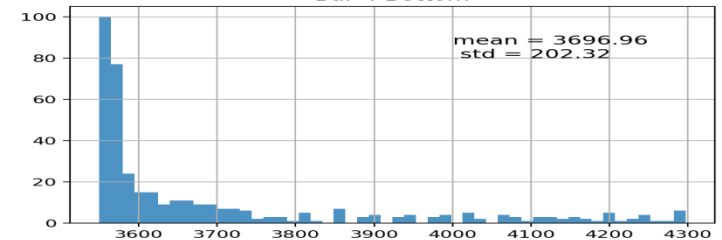
Bar-4 Bottom

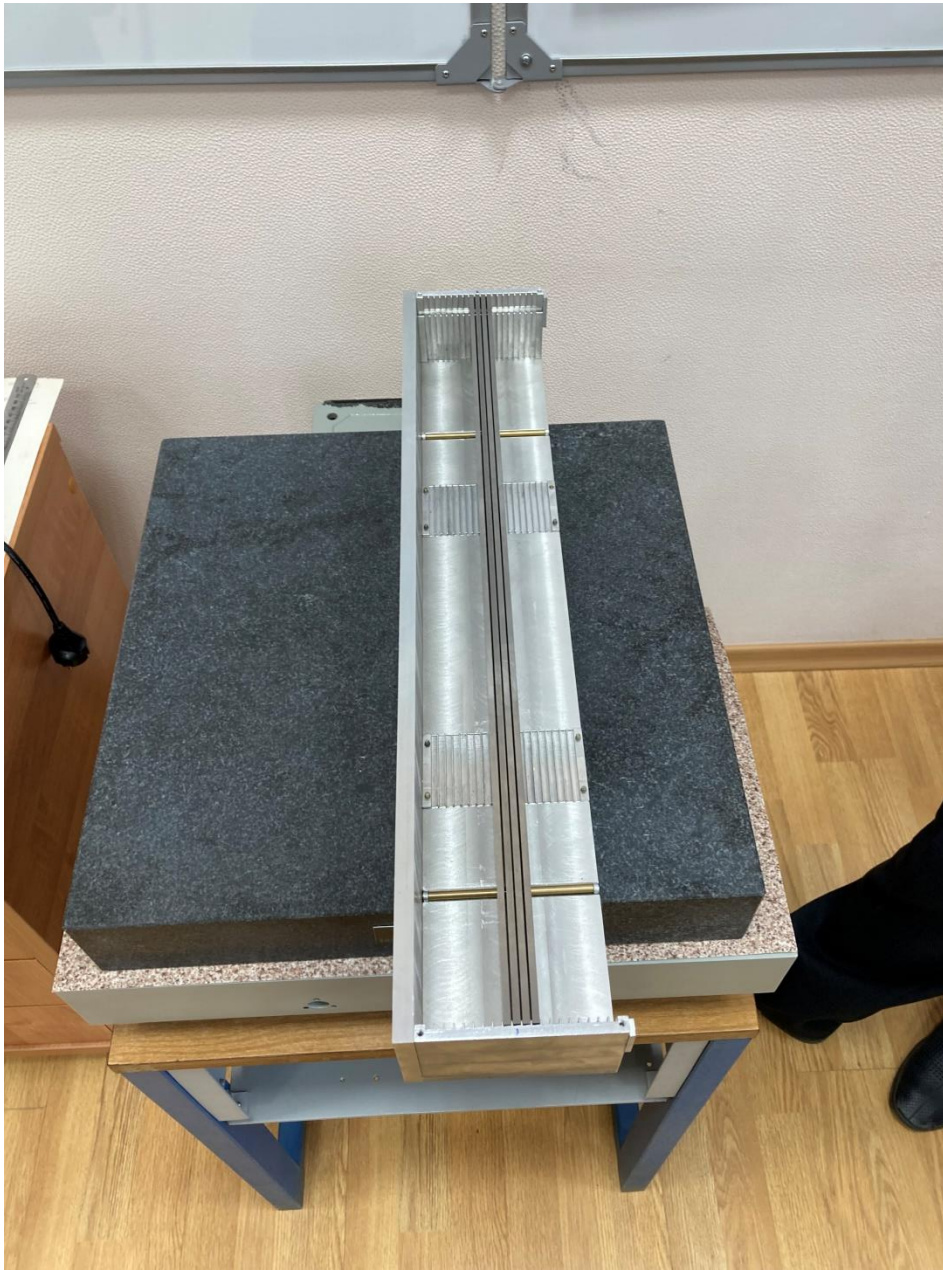


Bar-4 Top



Bar-4 Bottom





Gap between plates are
 $0.8 \text{ mm} < \text{gap} < 0.9 \text{ mm}$.
(0.9 -tight fit, 0.8 - easy)

Conclusion

- 4 W absorber plates for prototype of a compact calorimeter were measured.
- Thickness W1 3.534-3.557 mm , diff. = 23 μm
W2 3.547-3.556 mm , diff. = 9 μm
W3 3.555-3.570 mm , diff. = 15 μm
W4 3.567-3.580 mm , diff. = 13 μm
slightly more than 3.5 mm (from 34 up to 80 μm)
- Plates are installed in frame. Gap between plates are 0.8 mm < gap < 0.9 mm. (0.9 -tight fit, 0.8 - easy)
- Frame modification is required to facilitate the easy removal of plates from the frame.
- The bending of the plates is removed using a comb when installing the plates in frame.