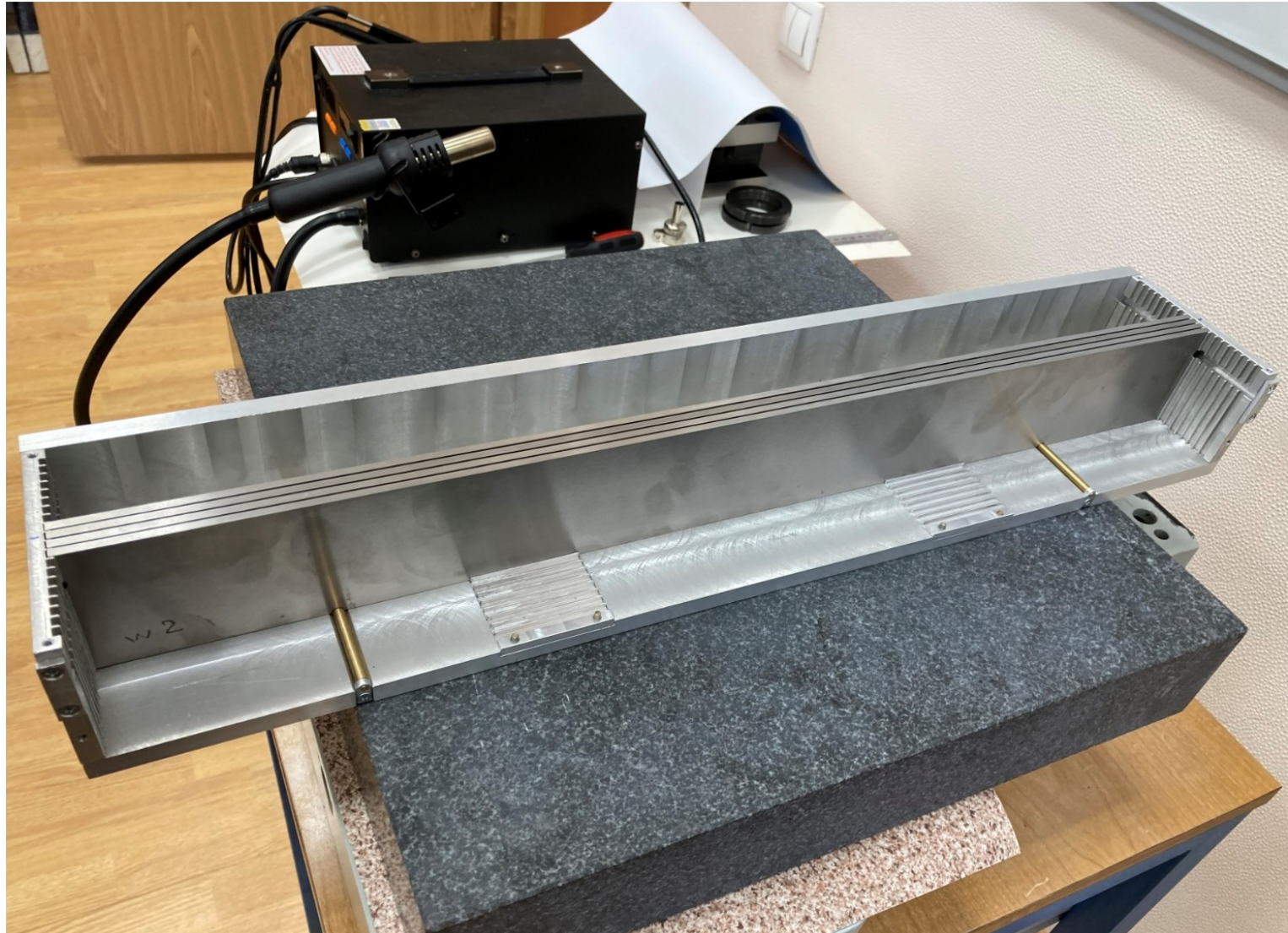


Frame for LUXE ECAL

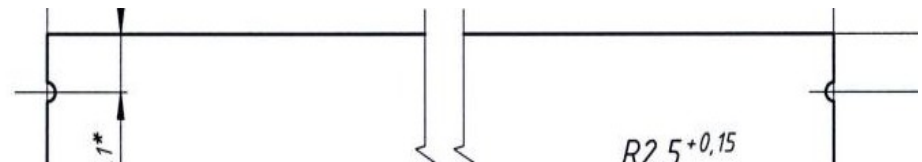
3 february 2022

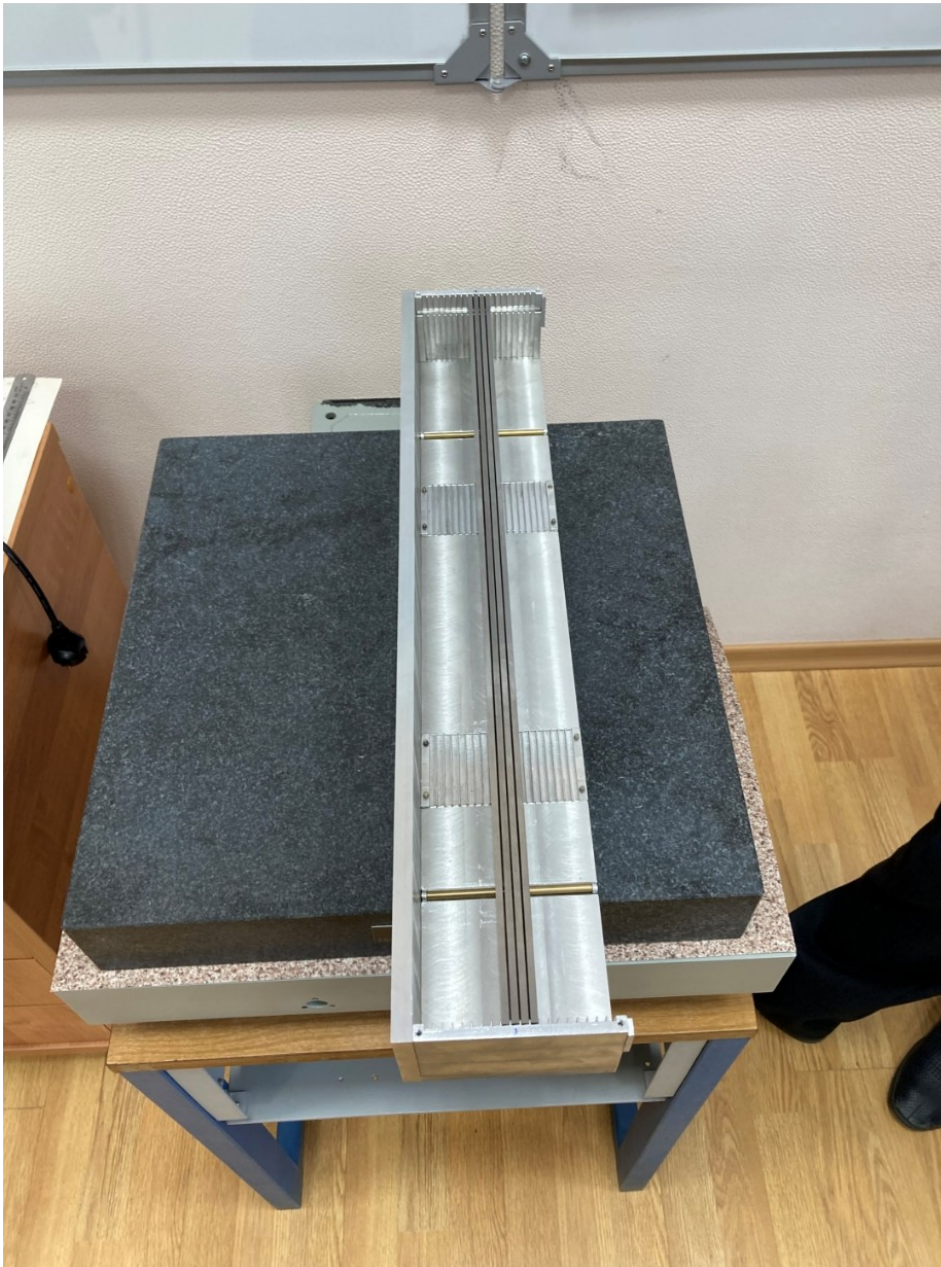
4 w-plates in frame



Frame modification

1. To remove one plate from the frame easily the sides will be modified so that it consists of two parts and one can pull a frame out using its semicircular holes after the upper parts of sides are removed.
2. We are going to put two micrometer screws in the bottom for fine tuning of comb positions.
3. Do we need a capability to tune the frame position in vertical direction?





Gap between plates are
 $0.8 \text{ mm} < \text{gap} < 0.9 \text{ mm}$.
(0.9 -tight fit, 0.8 - easy)

Thickness of W-plates slightly more
then 3.5 mm (from 34 up to 80 μm)

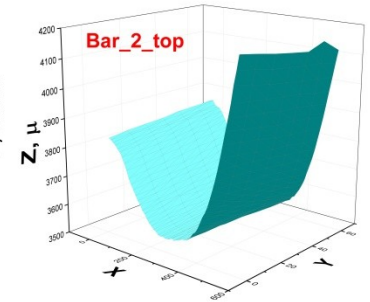
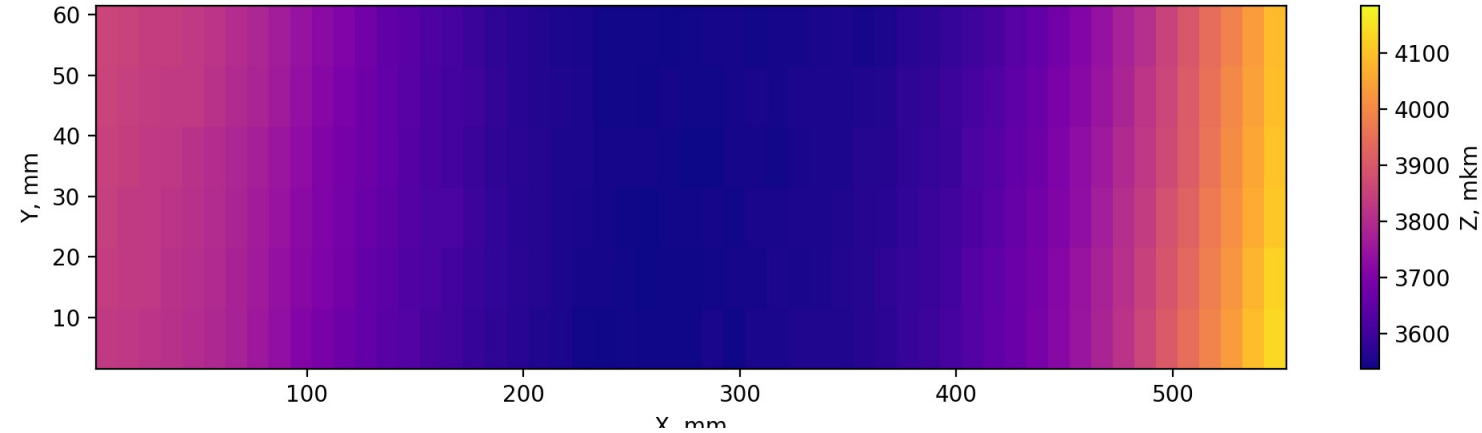
distance between planes must be 1mm

We plan to order next plates
with thickness 3.5-0.1 mm.

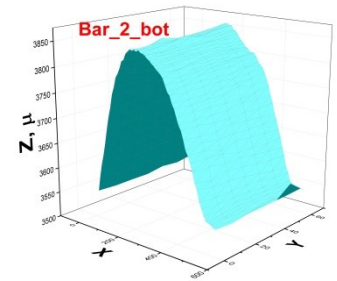
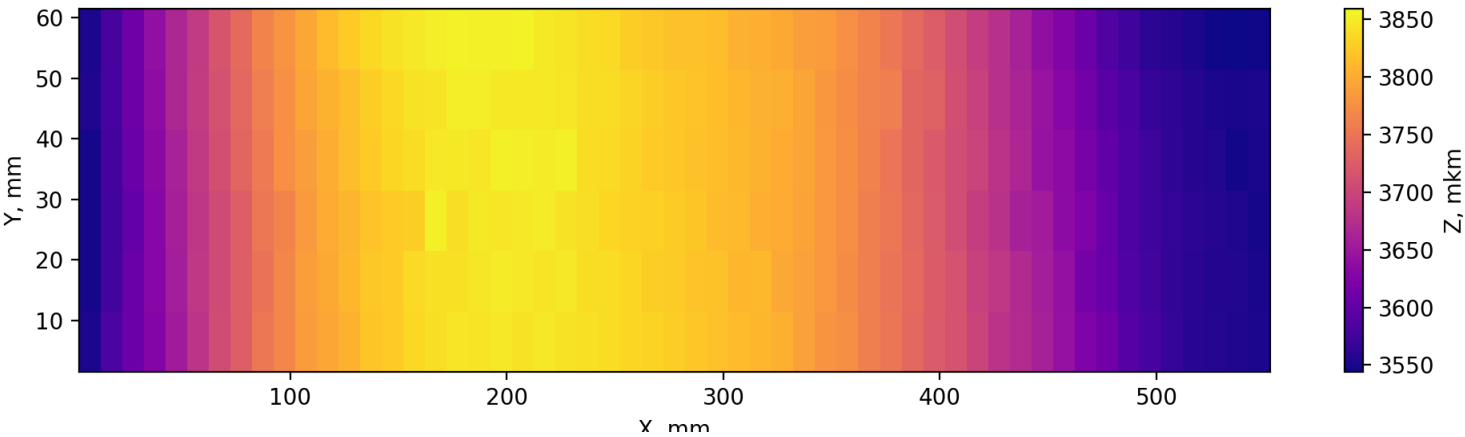
We are also going to replace combs
and increase gaps by 0.1 mm to get
1 mm between plates.

Max deviation W2

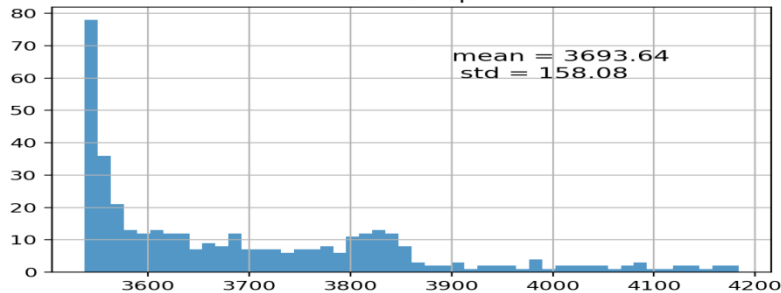
Bar-2 Top



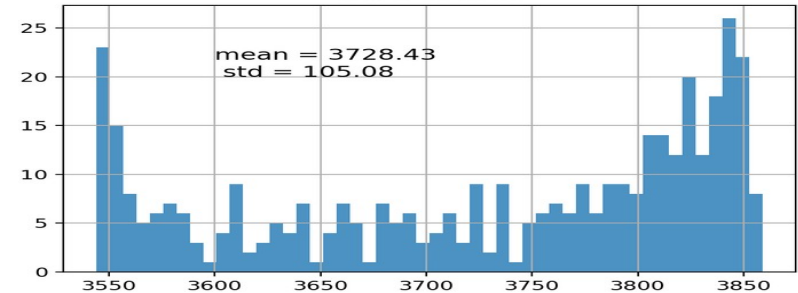
Bar-2 Bottom



Bar-2 Top



Bar-2 Bottom



Bending

- The bending of the plates goes away when installing the plates in frame, thanks to the combs.
- It is not clear yet whether it possible to remove bending. We have contacted the manufacturer to review the technology.

Conclusion

- The frame is going to be modified according the experience we gained
 - sides will be made of two parts to ease a plate extraction
 - fine tuning of bottom combs
 - new combs with the distance between plates increased by 0.1 mm
- We are going to order the next batch of 5 plates during February

Инв. № подл.	Изд. № докл.	Подп. и дата	Взам. инв. №	Инв. № докл.	Подп. и дата	Справ. №	Перв. примен. 3257.002.00	3257.002.01	$\sqrt{Ra\ 3,2}$																															
<p>1*Размер для справок. 2 Общие допуски по ГОСТ 30893.1: Н14, h14, ±IT14/2. 3 Острые кромки притупить.</p>																																								
<table border="1"> <tr> <td colspan="4">3257.002.01</td> </tr> <tr> <td>Изм.</td> <td>Лист</td> <td>№ докум.</td> <td>Подп.</td> </tr> <tr> <td>Разраб.</td> <td>Бражников</td> <td></td> <td>16.02.21</td> </tr> <tr> <td>Проб.</td> <td>Рыбаков</td> <td></td> <td>16.02.21</td> </tr> <tr> <td>Т. контр.</td> <td></td> <td></td> <td></td> </tr> <tr> <td>Нач. отд.</td> <td>Киричков</td> <td></td> <td>16.02.21</td> </tr> <tr> <td>Н. контр.</td> <td></td> <td></td> <td></td> </tr> <tr> <td>Утв.</td> <td></td> <td></td> <td></td> </tr> </table>									3257.002.01				Изм.	Лист	№ докум.	Подп.	Разраб.	Бражников		16.02.21	Проб.	Рыбаков		16.02.21	Т. контр.				Нач. отд.	Киричков		16.02.21	Н. контр.				Утв.			
3257.002.01																																								
Изм.	Лист	№ докум.	Подп.																																					
Разраб.	Бражников		16.02.21																																					
Проб.	Рыбаков		16.02.21																																					
Т. контр.																																								
Нач. отд.	Киричков		16.02.21																																					
Н. контр.																																								
Утв.																																								
Поглотитель				Лит.	Масса	Масштаб																																		
					2,1	1:2																																		
				Лист	Листов	1																																		
				КО ЛЯП ОИЯИ																																				

Копировал

Формат А4

5 W absorber plates
were ordered.

Dimension 556x63x3.5 mm