

# About Me

Uli Einhaus  
DESY FH Fellow Day  
13.05.2022

**HELMHOLTZ**

**CLUSTER OF EXCELLENCE**  
QUANTUM UNIVERSE

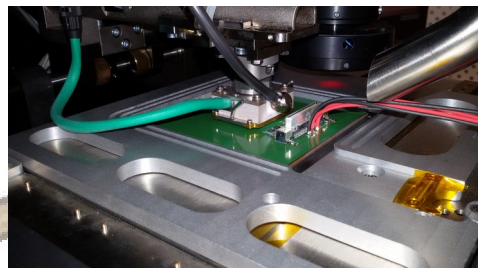
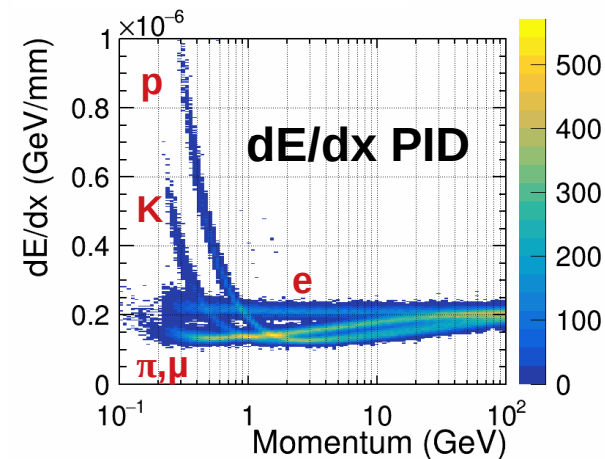
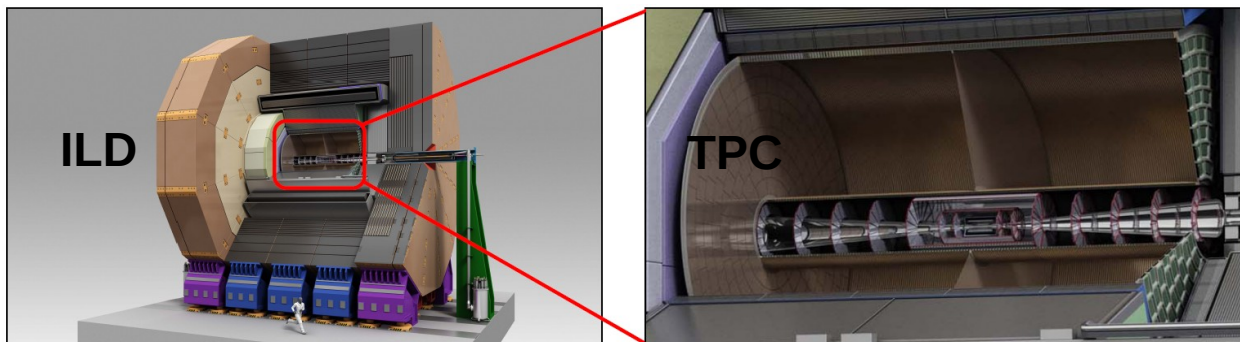


# Path to Particles

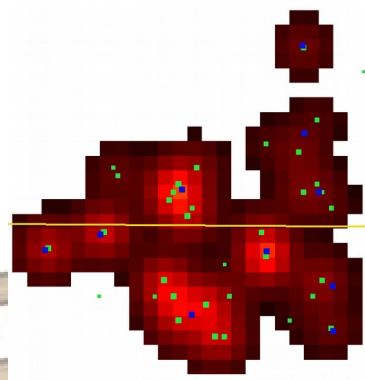
- Saterland / Sater Frisia
  - Tiny village
  - Own language island
- Oldenburg
  - B. Sc. Field Theory: Q-Balls
- Hamburg
  - M. Sc. Astroparticle Physics: HiSCORE gamma-ray detector prospects
  - PhD: ILC/FHF dE/dx detector & physics
  - PD: ILC/FHF timing detector & physics



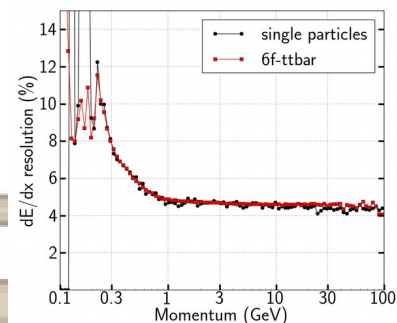
# PhD: ILC ILD TPC dE/dx PID – From Hardware to Physics



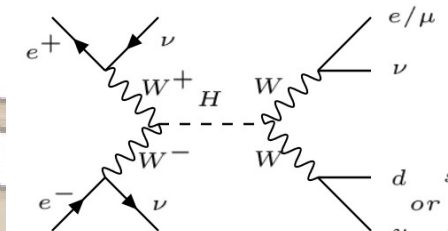
Hardware



Detailed TPC Simulation



Full-Detector Performance

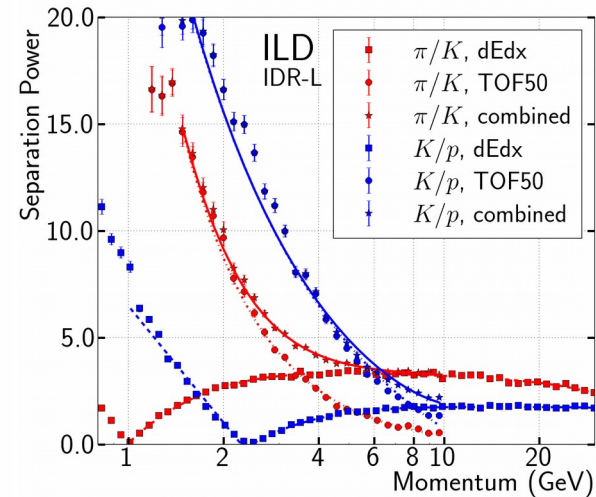
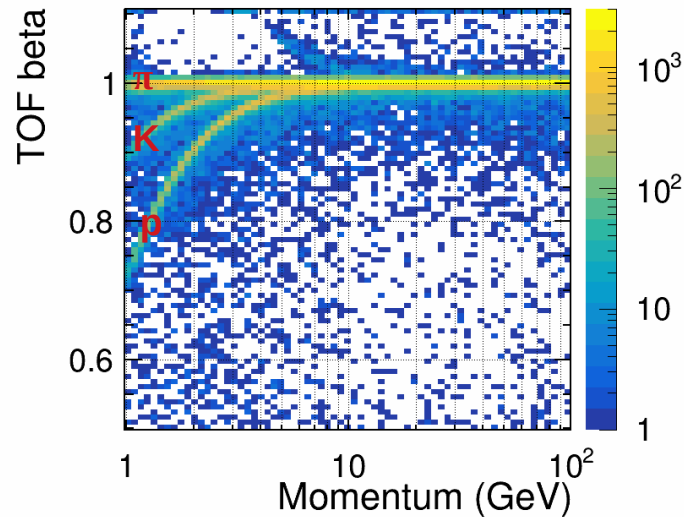


Flavour Physics



# PD: FHF Time of Flight – From Hardware to Physics

- 30-100 ps timing measurement
- Si driven by LHC pile-up mitigation, in FHF: TOF PID!
- Again: from hardware to physics
- Also more broadly PID software for FHF



- DESY PR: ~ 100 visitor tours
- DOIT speaker, HeJus
- QU PostDoc Council  
→ [qu-postdoccouncil-request @ desy . de](mailto:qu-postdoccouncil-request@desy.de)

