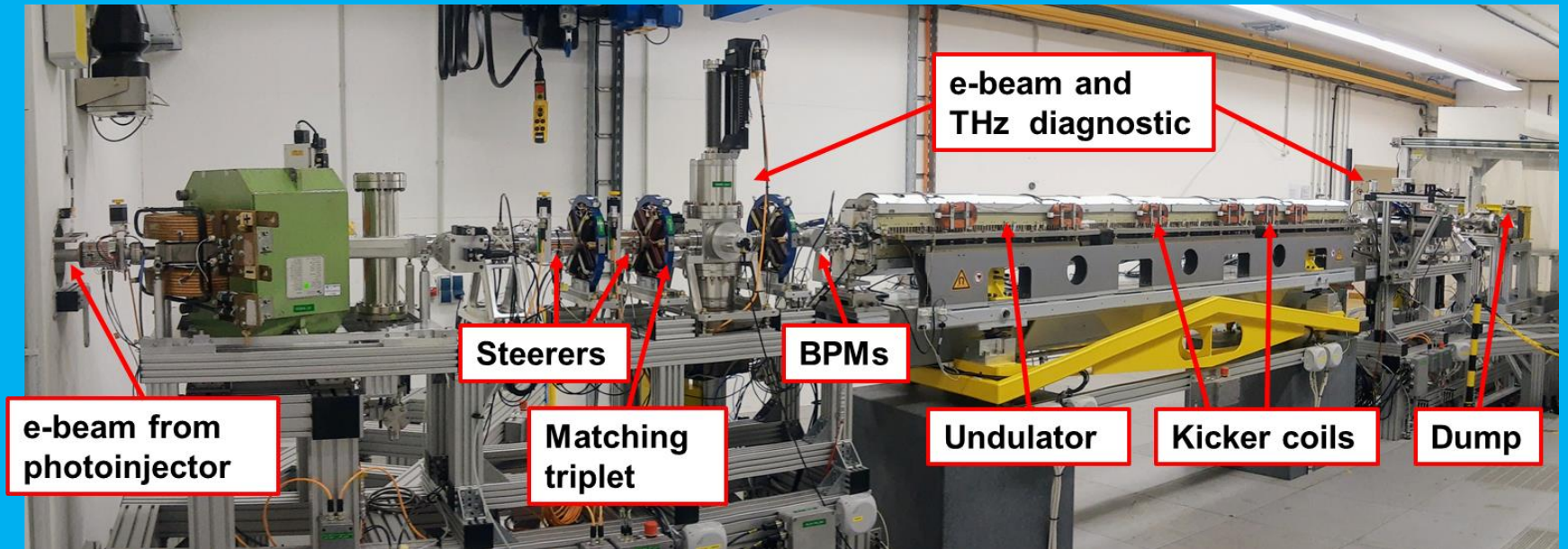


Updates of the THz SASE FEL at PITZ

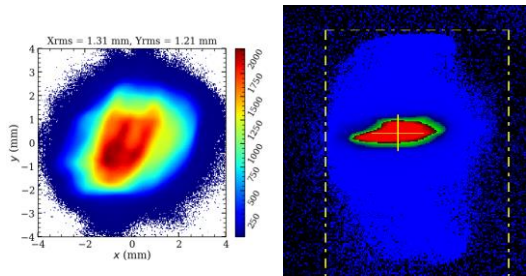
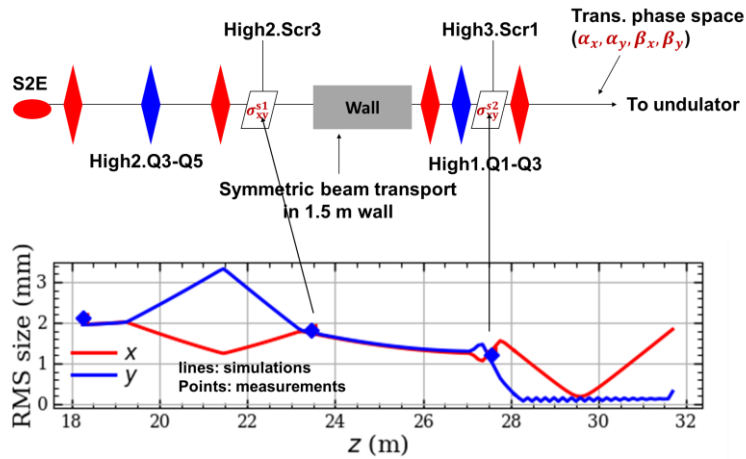


Prach Boonpornprasert, Ekkachai Kongmon, Mikhail Krasilnikov and Xiangkun Li
for the THz@PITZ Team

Highlights

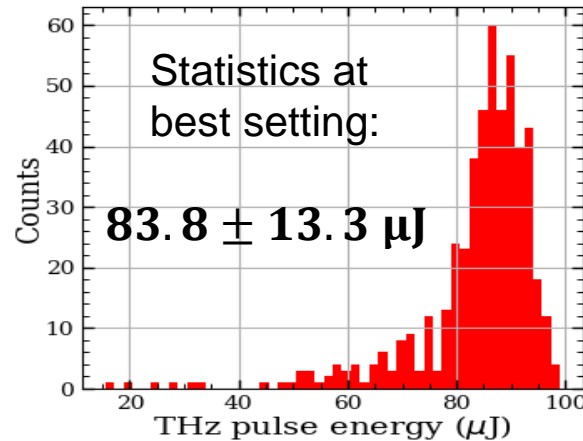
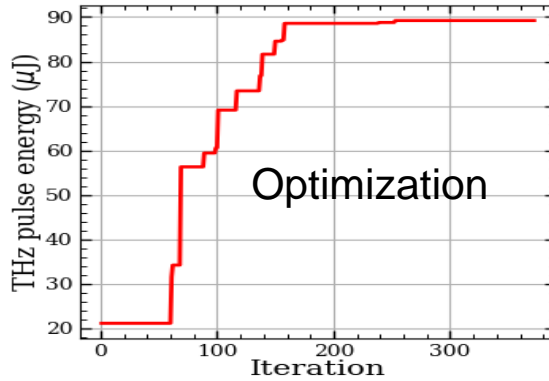
Space-charge dominated beam (>2 nC, ~17 MeV/c) → 100 μm SASE FEL with pulse energy > 80 μJ

Beam transport and matching

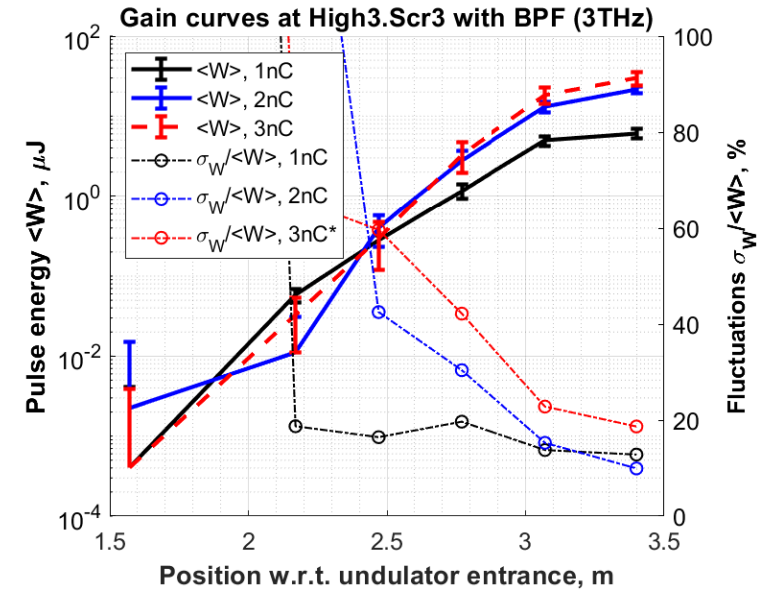


Measured beam before and after the undulator

Bayesian optimization



Latest FEL gain curve measurements



More at the poster!