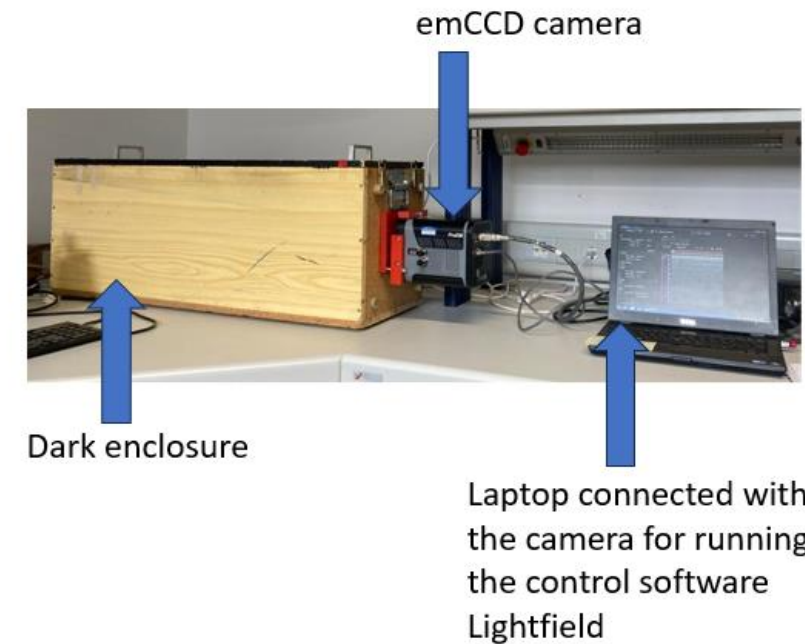
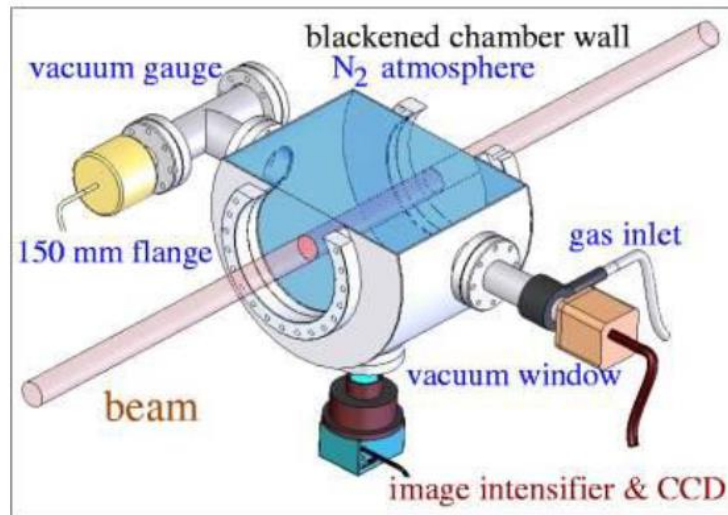


Preparatory measurements for the comparison of scientific camera systems to be used for beam diagnostics purposes

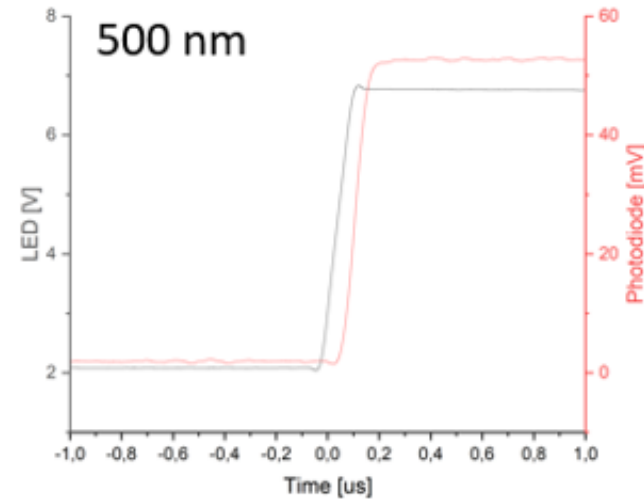
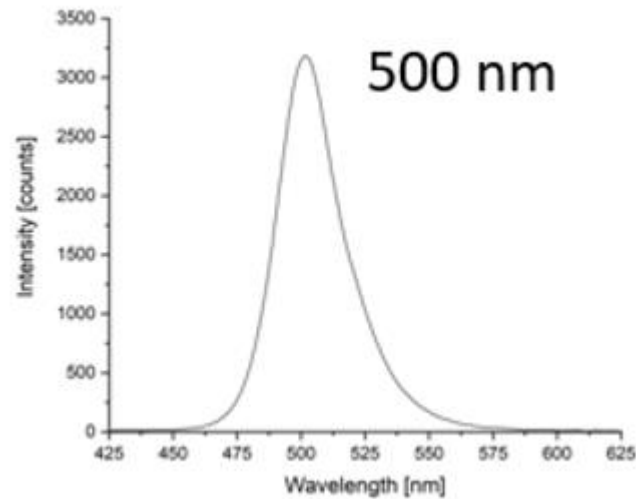
Leonie Bauer, P.Forck, H.Hähnel, S.Udrea

- Comparison of 3 scientific cameras
- ICCD, sCMOS, emCCD
- Low light – BIF



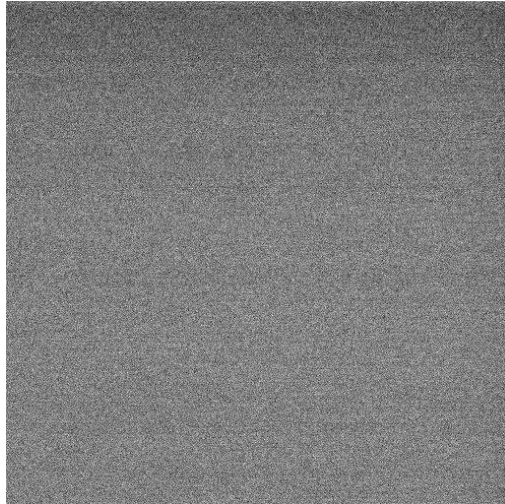
Characterization of the LEDs

- LEDs will be used as light source
- Dependence of camera sensitivity on wavelengths
- Spectrometer and photodiode measurements

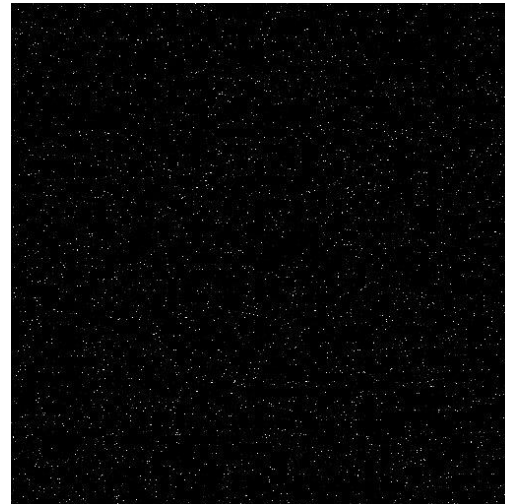


First background measurements

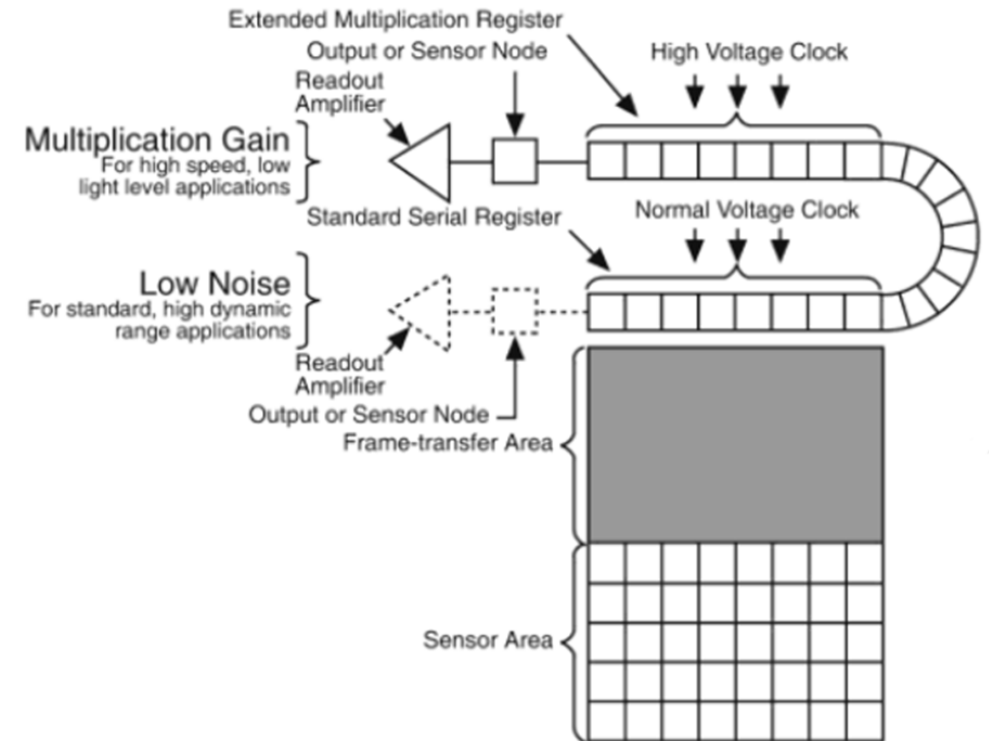
- emCCD camera
- Shutter on
- Increasing of the e.m. gain



G = 10



G = 1000



ProEM+:512B sensor schematic

- For more detailed information about the preparatory measurements for the comparison of low light camera systems and for more first background measurements, please visit my poster.

Thank you for your attention.