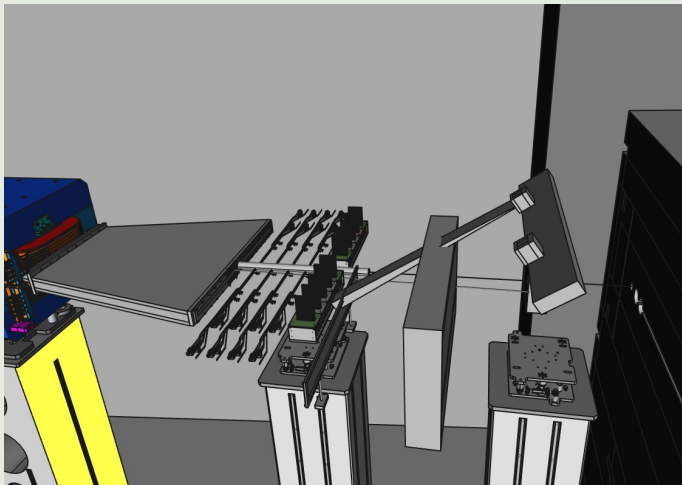


ECAL-P frame: rotary table for test-beam (do we need them ?)

Grzegorz Grzelak, Piotr Zbińkowski, Filip Żarnecki

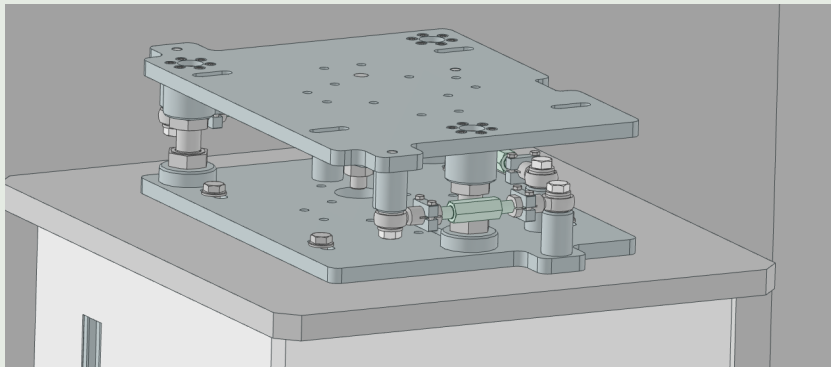
Faculty of Physics
University of Warsaw

LUXE ECAL-P meeting 28-FEB-2023



- “DESY standard” tables on concrete pillars

Experimental table in the LUXE hall



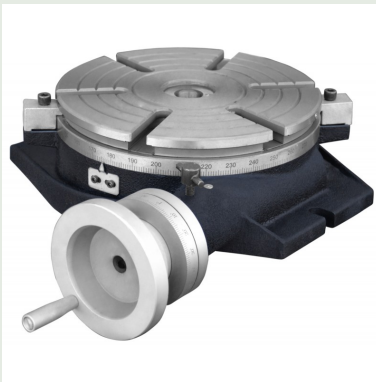
- 6 DOF, limited range ($\sim \pm 1$ cm), table is shorter than ECAL-P x-dimension
- **additional plate between the table and the ECAL-P body is planned**
- as a support for transportation (hooks for the crane...)
- but can be also equipped with rotary mechanism if needed

Movable platform in test beam hall



- only 2 DOF (up-down, left-right), no easily rotation

Rotary table



- example of commercial 250 mm table
- we can also opt for simpler “custom made” design
- do we need such or similar device ?
- what angular range we need ($\pm 30^\circ$)?