

ILC Site Development Schedule

Current status of “Reference site schedule”

Tomo SANUKI CFS/MDI Mini-Workshop (29 Sep. 2023)

ILD Installation Timeline

a Reminder

Karsten Buesser

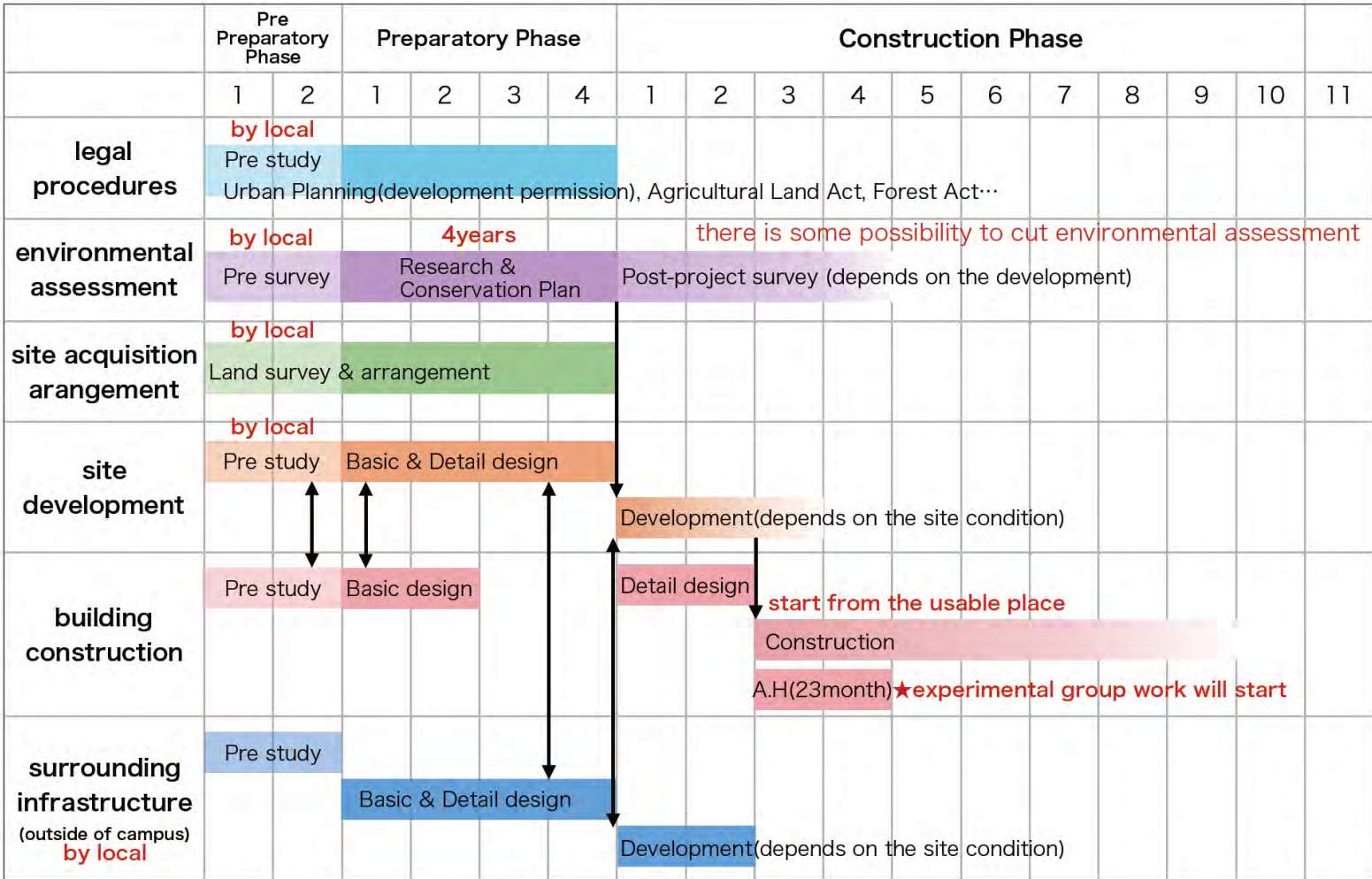
LCWS2023

17.05.2023



IP Campus Development (Draft 03/2016)

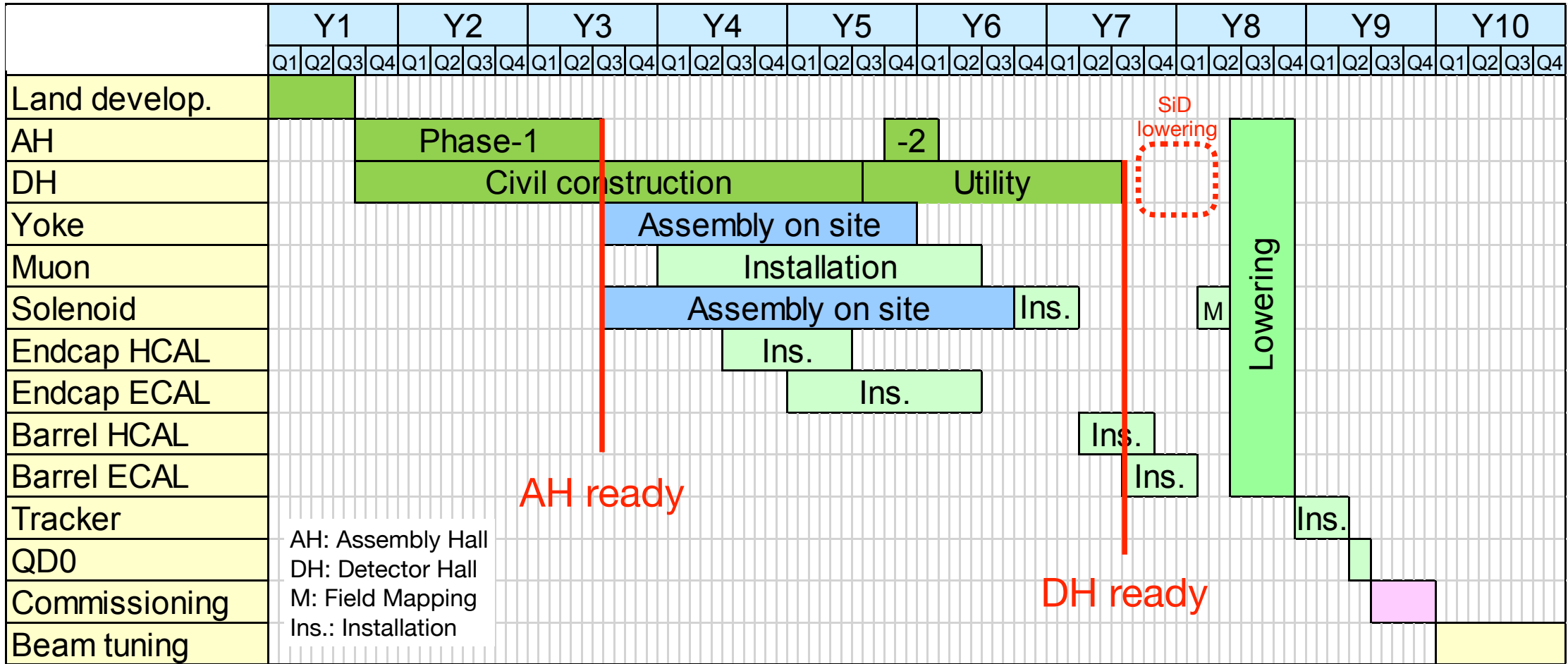
IP campus schedule(draft)



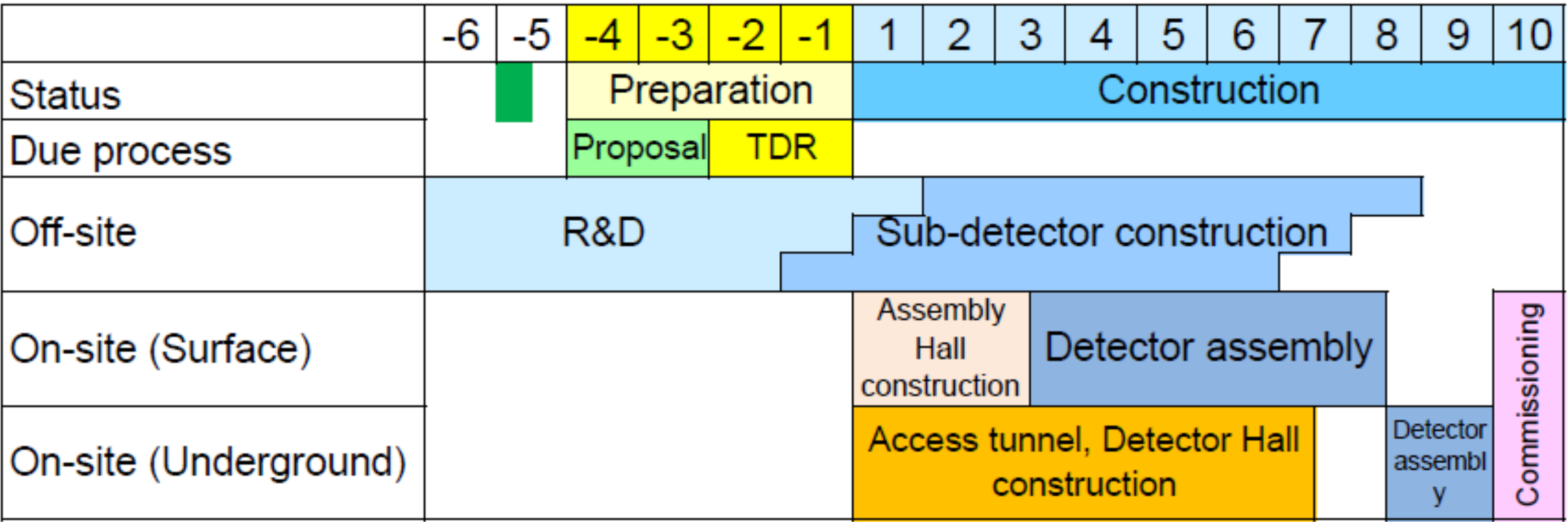
※all include the contract procedure ※A.H. schedule is from change request NO.ILC-CR-000R

T. Onuki

Technical Detector Construction/Assembly Time Line

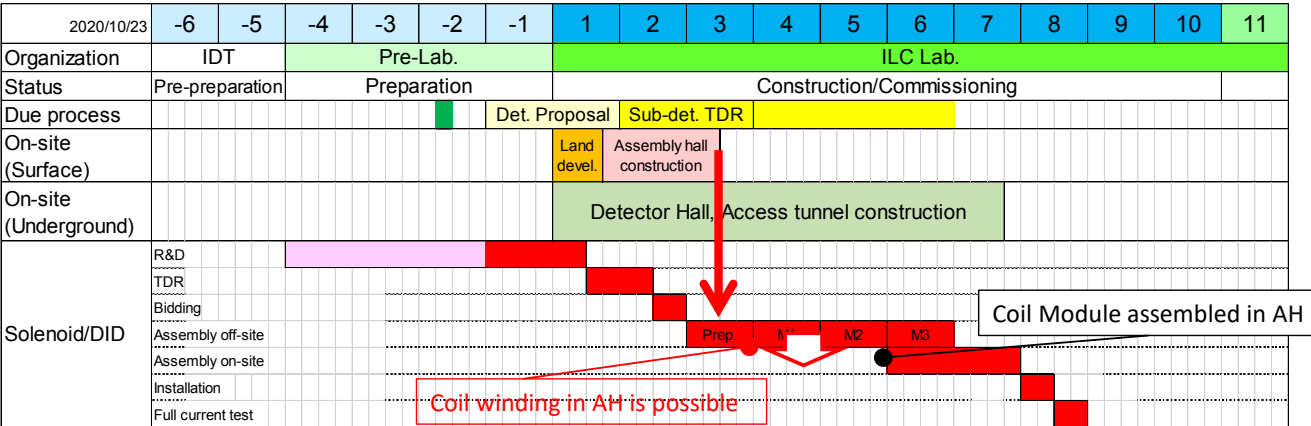


ILC Detector Timeline?



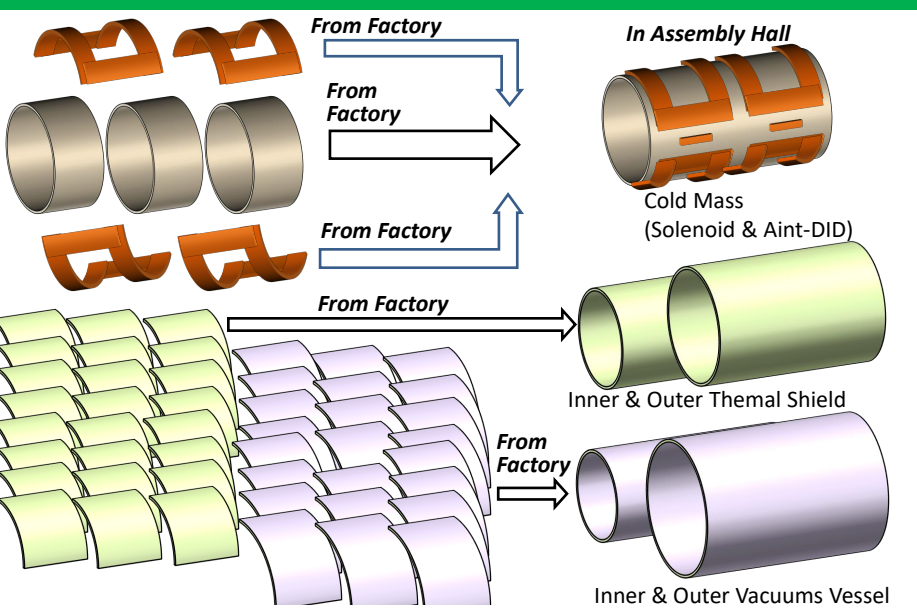
Solenoid Manufacturing

- Solenoid production**
- Assumed module production in industry, assembly on site
 - Transportation is an issue
 - New idea: wind coil modules on-site also
 - needs to be studied in more detail
 - should fit into time lines
 - space in on-site assembly area is required
 - see talk by Y. Makida this afternoon

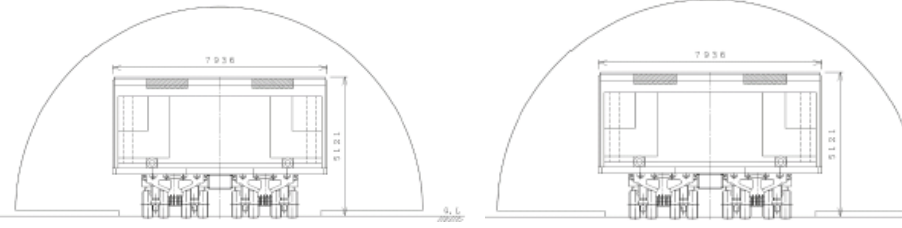


Y. Makida, ILCX

Outline of ILD Coil manufacturing process (1)



Passing Through Tunnels



Conclusions

Detector assembly has been studied in quite some detail in the past

- Check E-JADE Deliverable Report #22: https://www.e-jade.eu/publications/deliverable_reports/
- Technical schedule assumes 9 years of construction, 1 year of commissioning
 - Solenoid construction is on the critical path for the detectors
 - R&D, preparation, and construction in industry requires significant funds very early
 - to some extent already in preparatory phase

CFS and site schedules have been estimated by LCC and local experts

- Need a significant „preparatory phase“ after green light and before construction start
 - legal procedures, environmental assessment, land acquisition, etc.
 - requires already significant project funding
 - takes 4 (-6) years
- On-site assembly of detector parts can only start after Assembly Hall is ready
 - 3-4 years after construction start, 8-10 years after green light

Caveats

- Need to update knowledge about status of local planning
 - Ball has been dropped 2019
- Large uncertainties in all schedules

“Reference site schedule”

A working hypothesis of site-development schedule

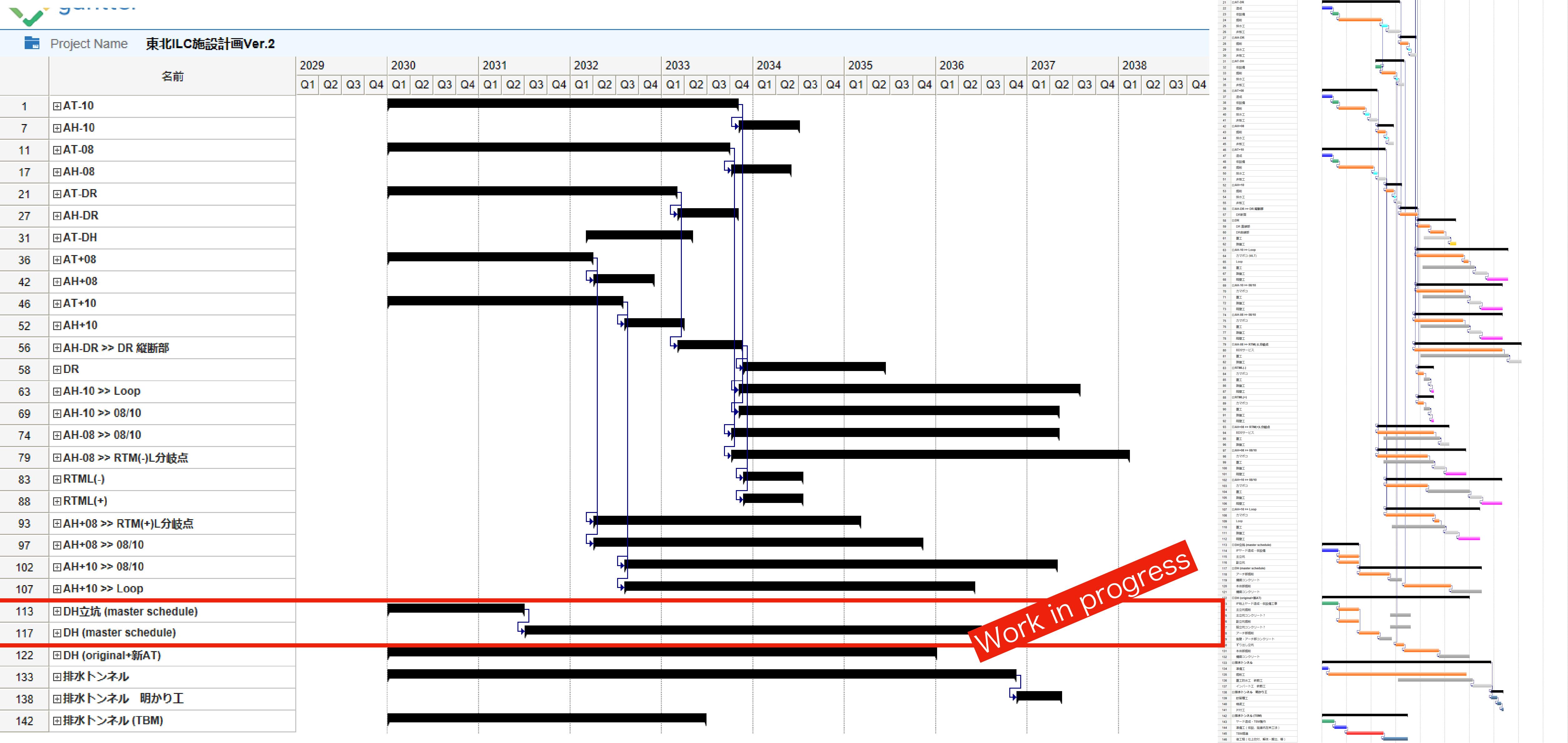
Decided to create a reference working hypothesis for the study of the various on-site work (assembly of detectors, construction of accelerators, etc.) in the IP area.

- Characteristics of the assumed IP area (existing infrastructure, environment, etc.)
- Permissions and approvals
- CE schedule

When, who, and what?

➡ Identify when on-site work related to detectors/accelerators can begin.

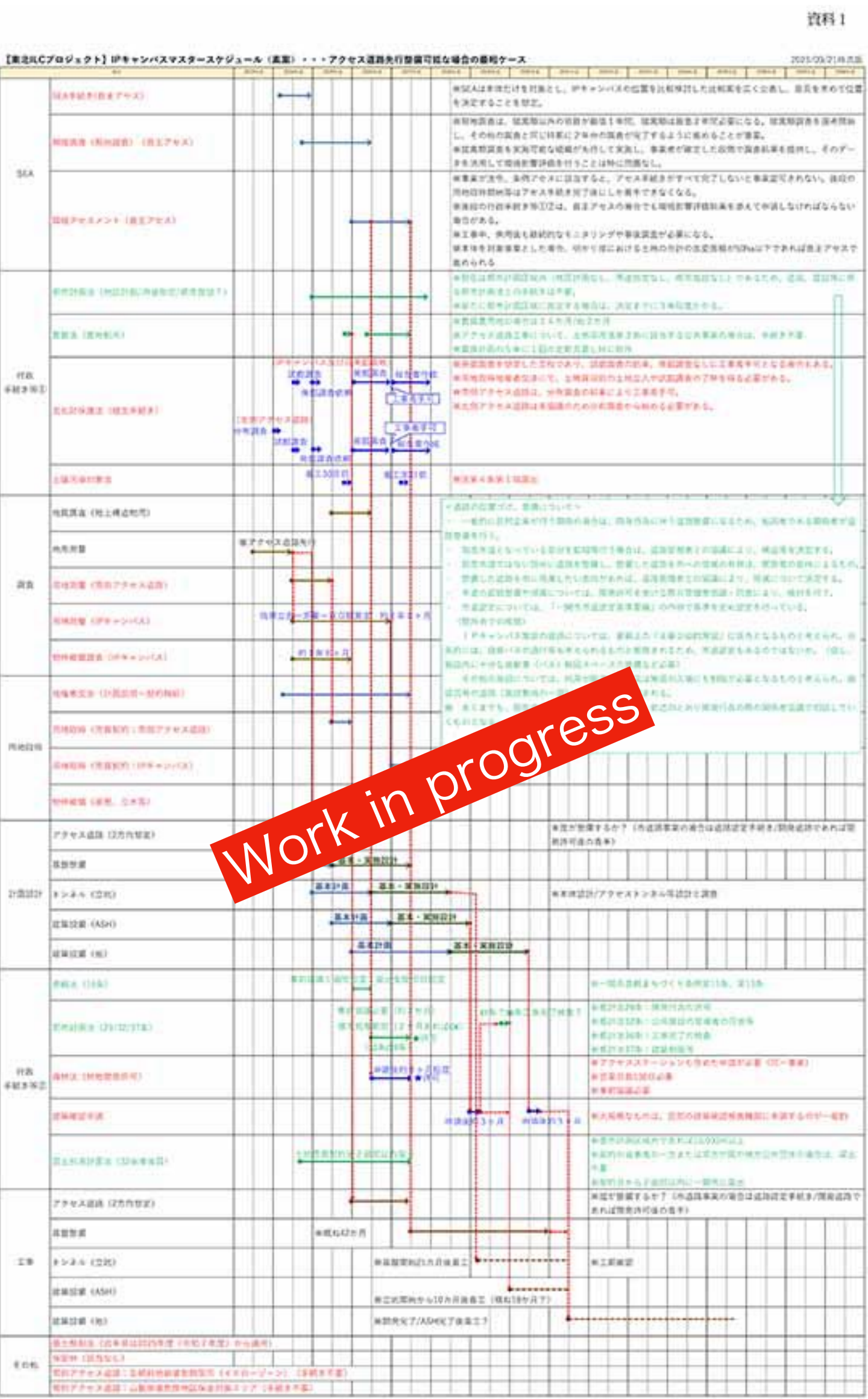
CE schedule



“Reference site schedule”

Lots of things to consider

- Environmental assessments
- City Planning Act, Cultural Assets Preservation Act, ...
- Surveys
- Land acquisition, ...
- Infrastructure development



We intend to complete the work by the end of this fiscal year.