

# Naf User Committee

## March 2011.

### Report from Operation

Yves Kemp, Andreas Haupt, Kai Leffhalm

On behalf of the NAF Operators for the NUC  
March 9, 2011

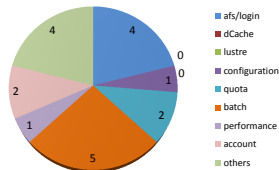


# Stats from helpdesk - Thanks to B. Kahle

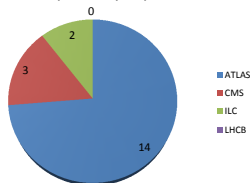
[Naf-helpdesk@desy.de](mailto:Naf-helpdesk@desy.de) (Feb. 1<sup>st</sup>-Feb.28<sup>th</sup>2011)

19 Tickets in total

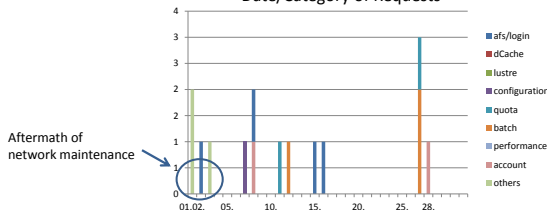
Category of Requests



Requests by Experiment



Date/Category of Requests



Benjamin Kahle – NAF-helpdesk



# NAF Tickets

## Access/transfer problem - 1

- > Firewall upgrade done on Feb. 1st
- > ... took some time to find all not working connections
- > ... Problems from before were solved too

## Login - 5

- > Problems seen  $\Rightarrow$  see action items
- > Too many logins kill memory
- > New hardware will have four times memory, should be enough for 2 times sessions

## AFS - 4

- > Known AFS issues
- > Different problem found today

## Software installation - 1

- > autogen

## Monitoring - 2

- > Wrong number of waiting jobs
- > Usage of new CPU resources
- > Starting time of a job

## Cooling maintenance in Zeuthen - 1

- > Communication was bad
- > External company did not succeeded in keeping the given times



## kernel panic - 1

- > Disk failure

## SGE - 1

- > Increase number of jobs per user for atlas during conference preparation



# Storage usage

## AFS issues

- > New version 1.4.14 will be installed tomorrow

## Some thoughts about data throughput

- > Is there already some calculation about needed per job data transfer rate
- > What would be a good block size  $\Rightarrow$  meaning e.g. how much data is read at least before processing starts
- > Concerning the
  - ... status quo
  - ... the future planing (two years would be good)



# Action Items: NAF

1005-3	email notification for /scratch monitoring (instance full) ⇒ First reports already send - Feedback?															
1007-1	setup Lustre groups for ATLAS, CMS, ILC ⇒ Will be done at next downtime															
1007-2	report on help desk tickets ⇒ See extra slide															
1010-4	statistics on multicore/PROOF usage ⇒ <table><tr><td></td><td>unixgroup</td><td>walldays</td></tr><tr><td>Multicore</td><td>atlas</td><td>912</td></tr><tr><td></td><td>cms</td><td>100</td></tr><tr><td>Singlecore</td><td>atlas</td><td>11718</td></tr><tr><td></td><td>cms</td><td>10434</td></tr></table>		unixgroup	walldays	Multicore	atlas	912		cms	100	Singlecore	atlas	11718		cms	10434
	unixgroup	walldays														
Multicore	atlas	912														
	cms	100														
Singlecore	atlas	11718														
	cms	10434														
1012-1	evaluate different stdout/stderr handling for SGE ⇒ scripts are ready, not enabled, ⇒ Waiting for green light from NUC															
1012-2	report on CERN strategy for batch and AFS ⇒ Normal handling, unclear why problem is not seen															
1101-3	revisit: user information/twitter ⇒ Easy command line needs OAuth Python package ⇒ not available as rpm from repositories, needs more time															



# Action Items - NAF and Experiments

1012-4	ILC and NAF	develop strategy to manage Lustre space ⇒
1101-4	NAF/CMS/ATLAS	move support list to request tracker? ⇒
1101-6	NAF/experiments	do we need a faster x-connection? ⇒
1101-7	NAF/LHCb	limit number of parallel running jobs ⇒ Is implemented as a resource: ⇒ -l lhcb_dcache_transfers=1 ⇒ is limited to 200 ⇒ The number has to be tested and adjusts
1102-2	ATLAS/NAF	try CVMFS for ATLAS software ⇒ Test version installed in HH (not NAF) ⇒ Some problems with long standing mounts ⇒ Still not stable enough for the NAF ⇒ CMS won't use it: no binding support by Cern ⇒ Is this the case?





# Action Items - NAF and Experiments cc.

1101-1	NAF/experiments	WGS reliability/support/monitoring ⇒ New hardware will be productive soon ⇒ New metric is tested ⇒ Two possibilities for high load tests: ⇒ 1. Just use them (no load test) ⇒ 2. Have vo-test.naf.desy.de as logon node for power users
1101-2	AH/WE/HS	naf_token for ubuntu and MacOSX ⇒



# Action Items - Experiments

1011-5	ATLAS	written request for NX ⇒ Is done, will be discussed, no near time implementation
1101-8	experiments	test new job submission verifier ⇒ Feedback?
1102-1	experiments	test SL5.6 ⇒ Feedback?

