

# Detector Visualization Progress

Charles Bell



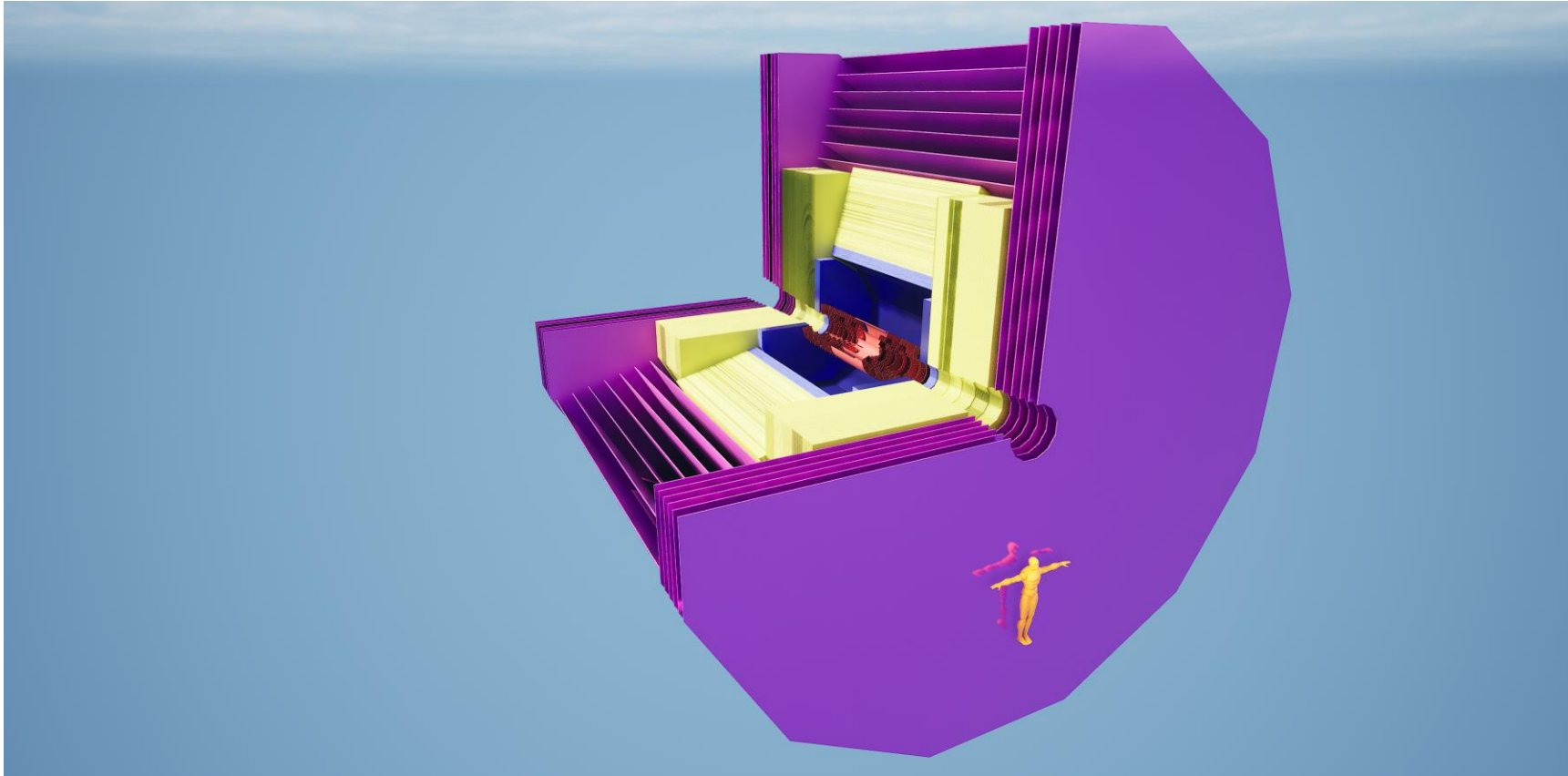
THE UNIVERSITY OF  
TENNESSEE  
KNOXVILLE



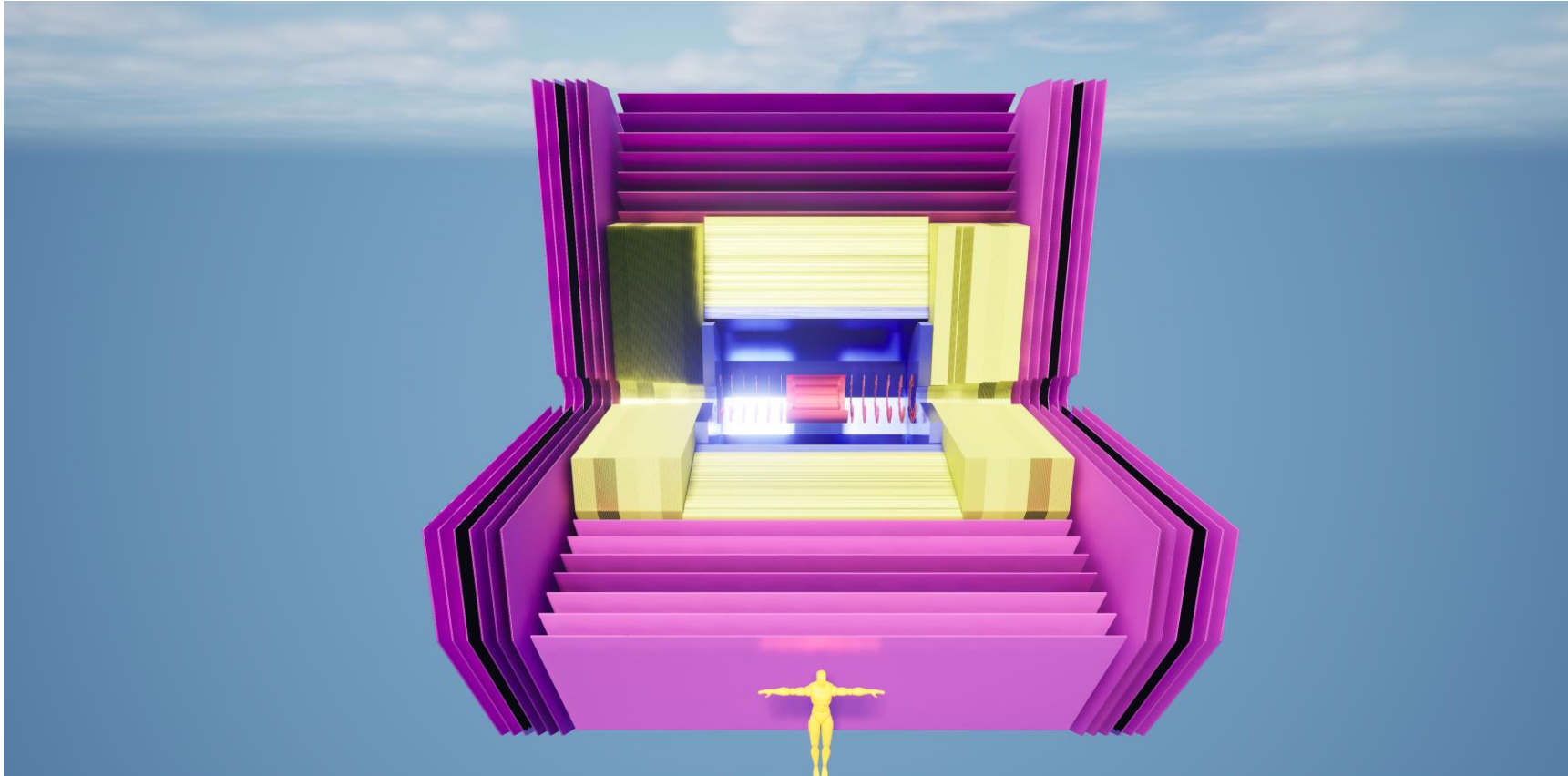
# Screenshots From Unreal Engine



# Screenshots From Unreal Engine

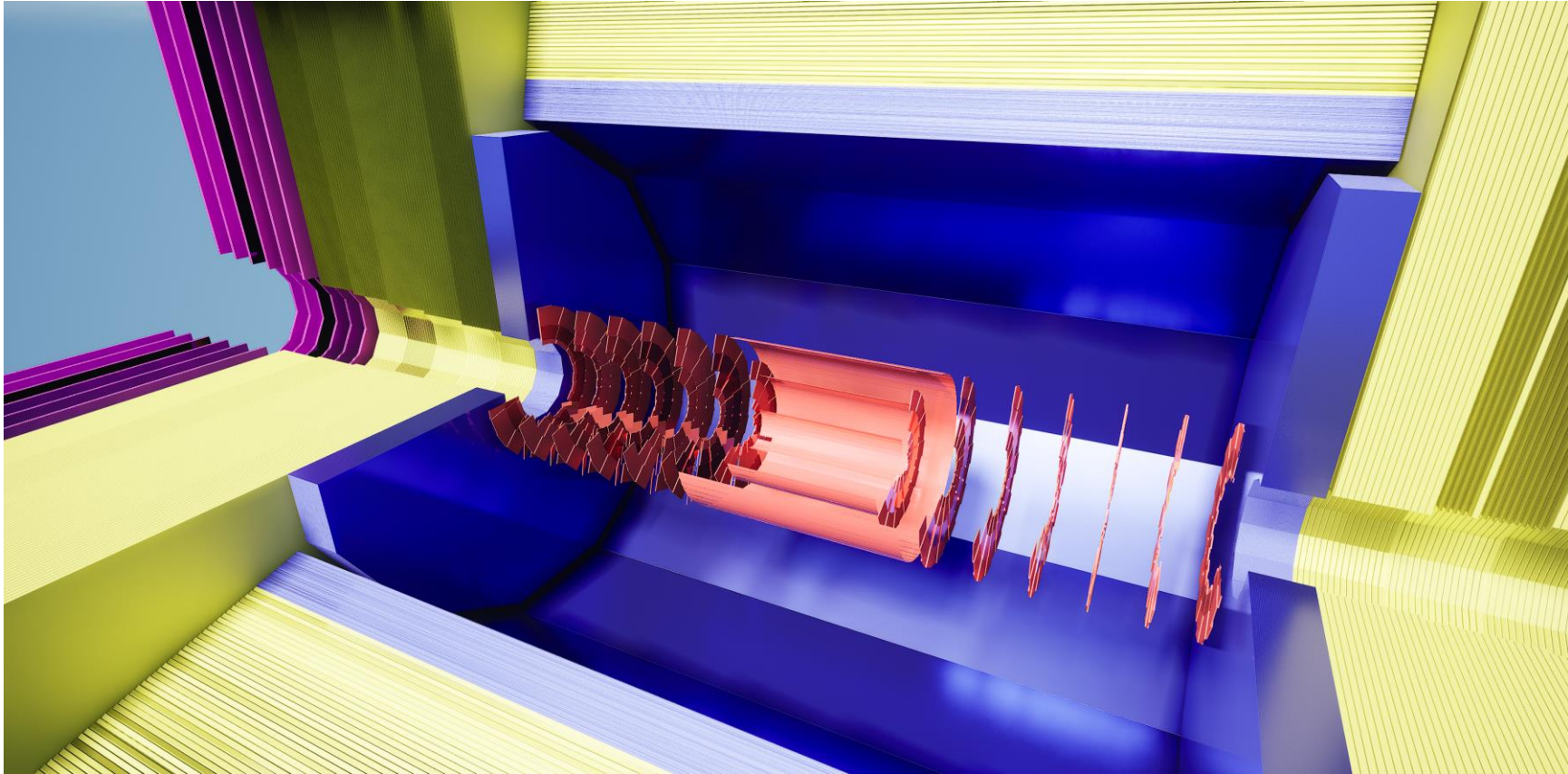


# Screenshots From Unreal Engine





# Screenshots From Unreal Engine



# To-Do List

- Add a Cartesian coordinate system – Easy
- Add a detector coordinate system – In progress
- Make better lighting
- Make labels for each system