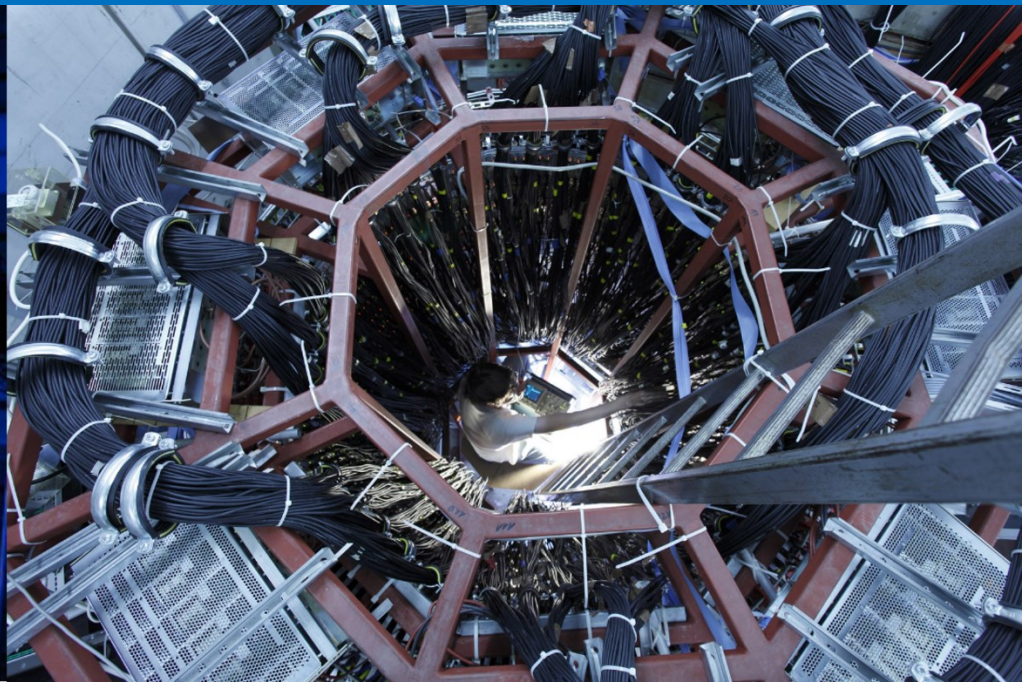
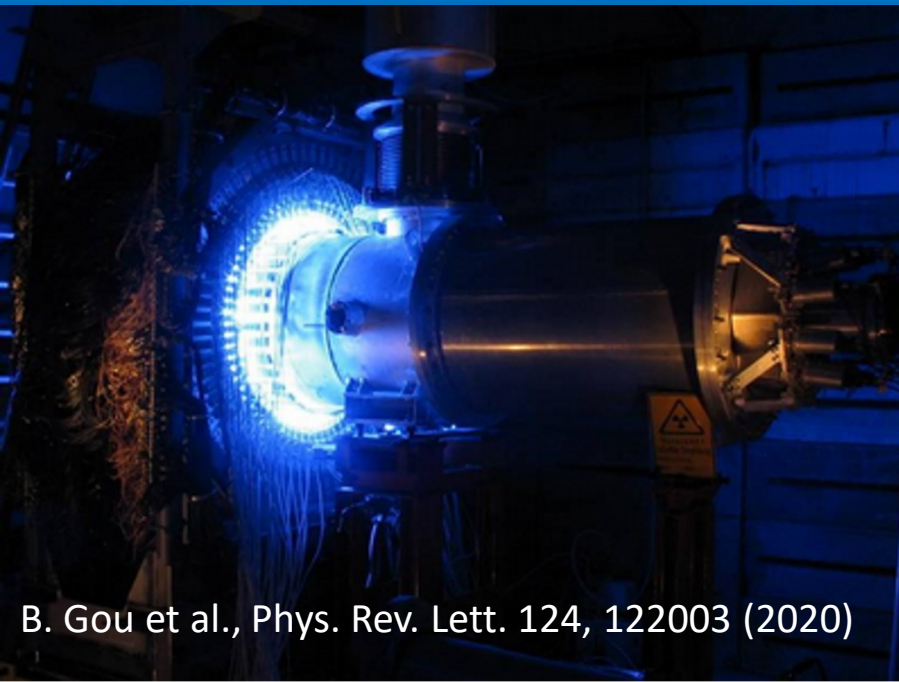


# Publication of the A4-Data according to FAIR-principles

Sebastian Baunack, Luigi Capozza, Boxing Gou,  
Gerrit Günther, Frank Maas, Oonagh Mannix, Malte Wilfert

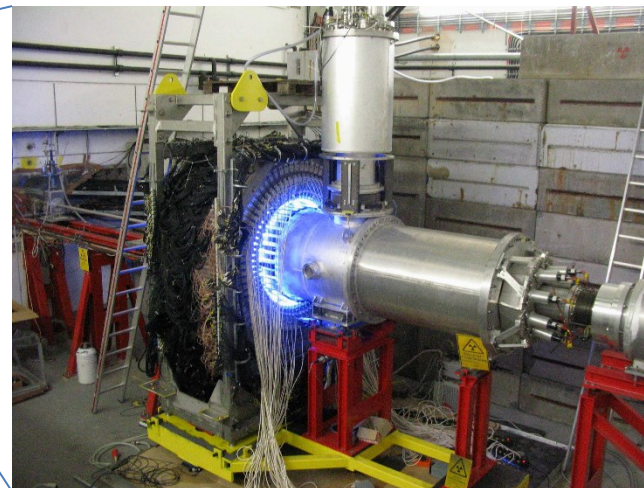
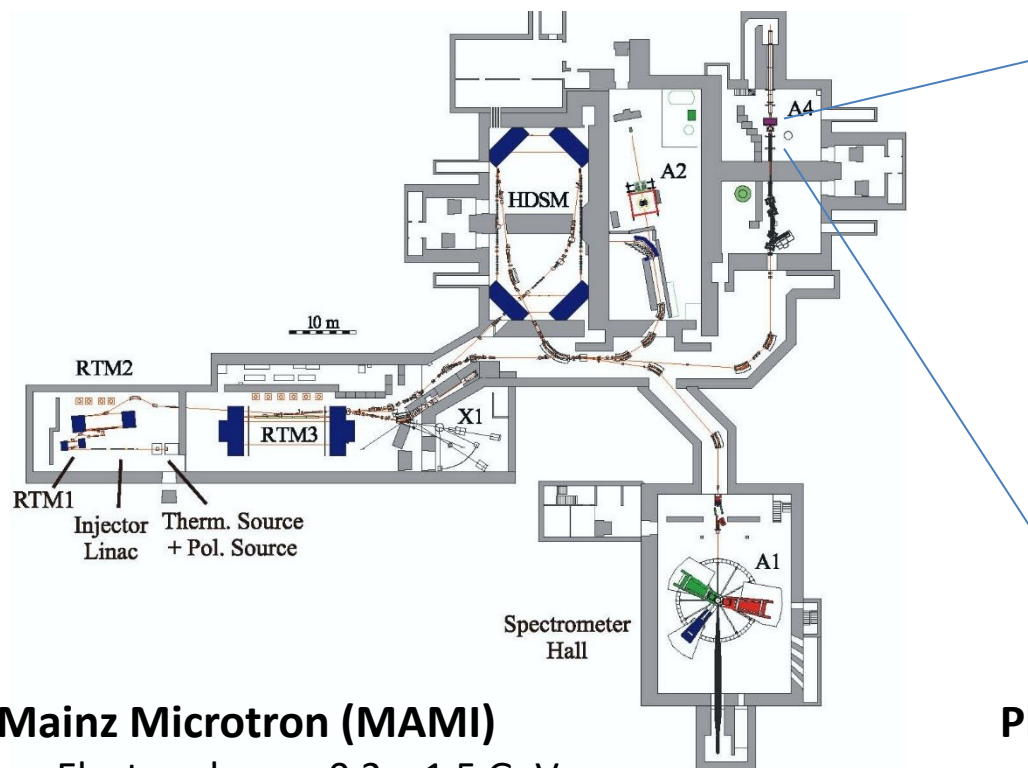
PATOF meeting

February 05, 2024



B. Gou et al., Phys. Rev. Lett. 124, 122003 (2020)

# A4 at MAMI



## Mainz Microtron (MAMI)

- Electron beam: 0.2 – 1.5 GeV
- Beam current: 20  $\mu\text{A}$
- Polarization  $\sim 80\%$

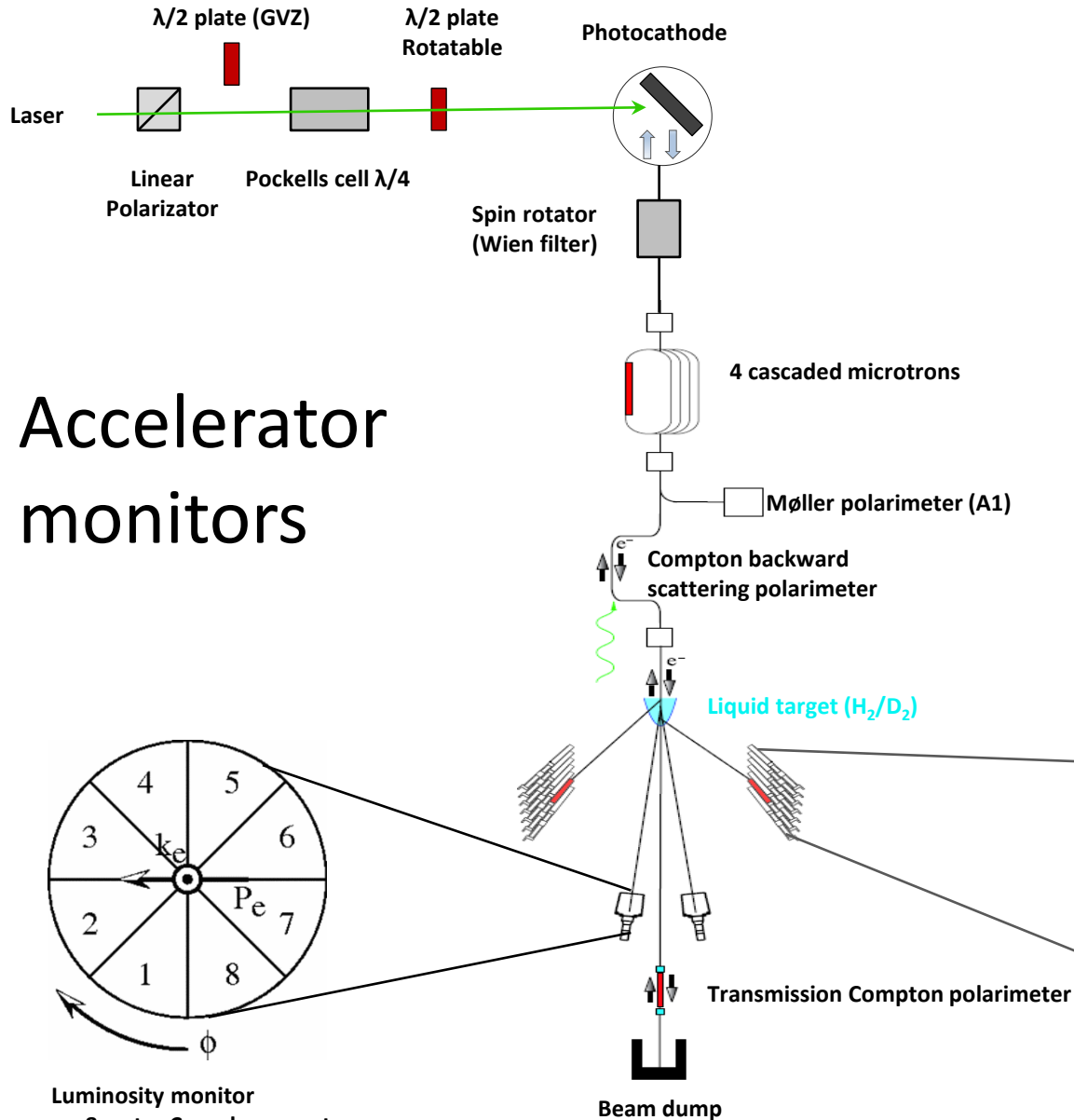
## A4 experiment

- Beam single-spin asymmetries ( $\sim 10^{-6}$ )
- Single-arm counting spectrometer ( $\theta$  and  $E$  of  $e^-$ )
- Rate: 100 MHz, pile up  $\leq 1\%$

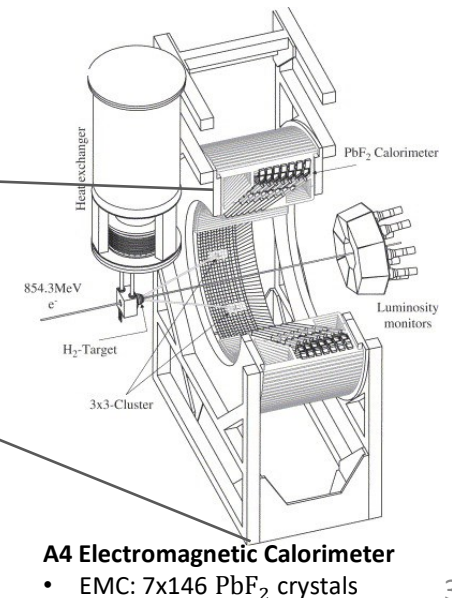
## Physics case

- $\vec{e}$ : **Strange form factor of the proton**
  - Search possible strange quark contribution to proton structure
- $e^\uparrow$ : **Two-photon exchange**
  - Contribution of two-photon exchange amplitudes to electron scattering
  - High order quantum correction

# A4 experiment setup

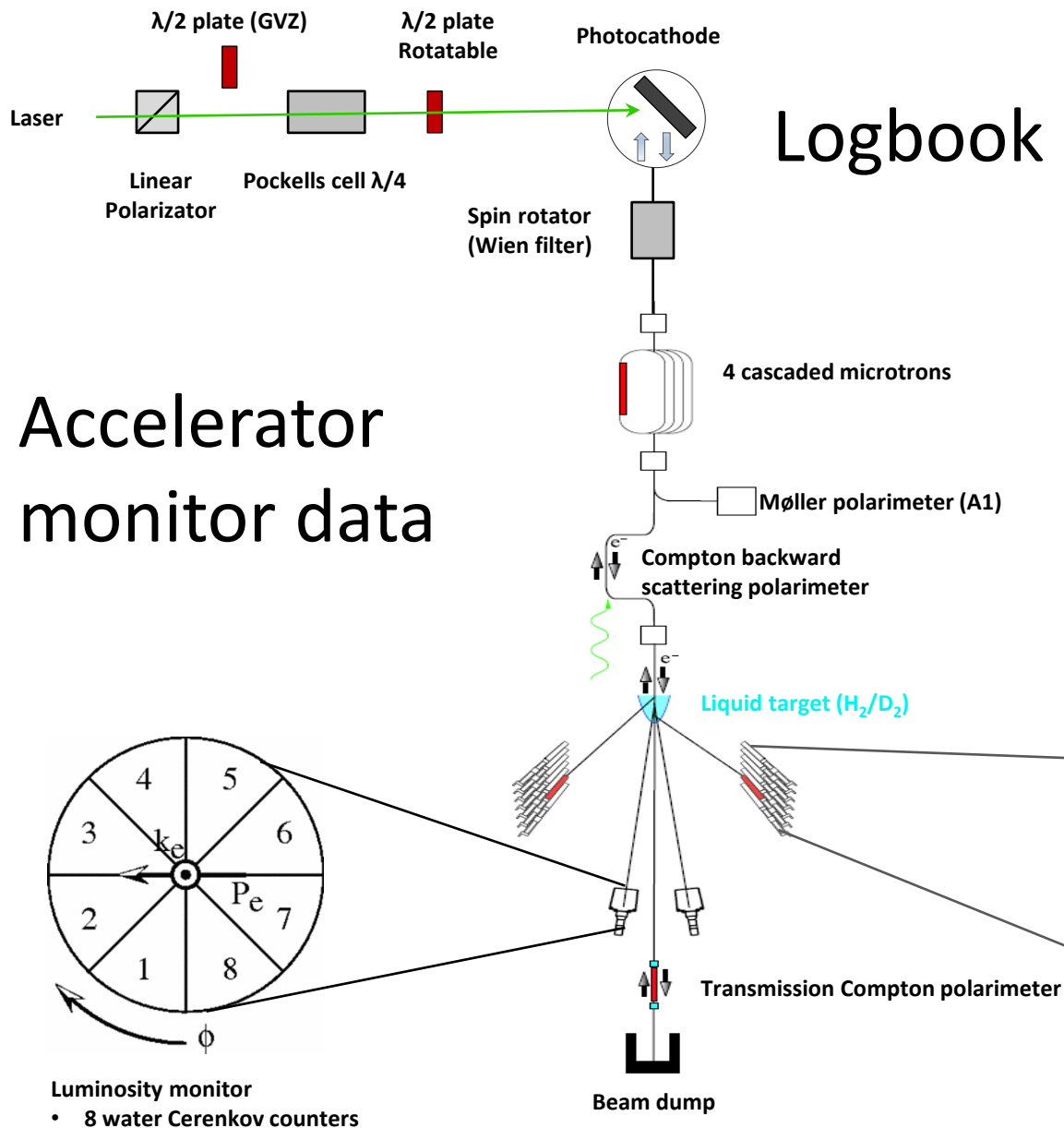


Main detector:  
asymmetries





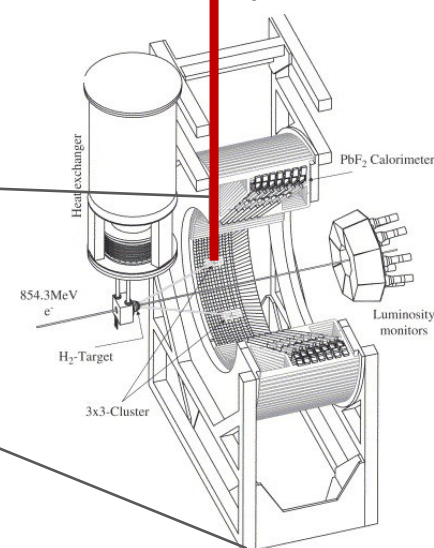
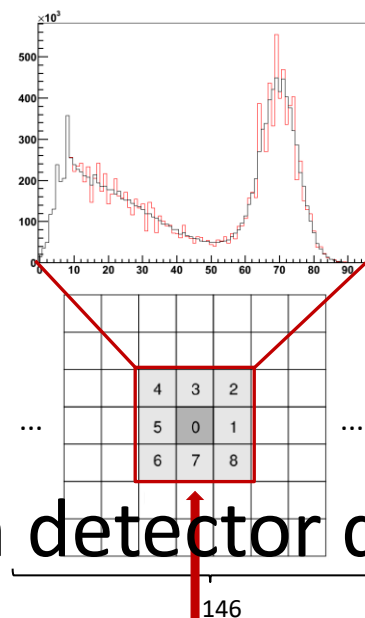
# A4 data



Accelerator  
monitor data

Logbook data

Main detector data



**A4 Electromagnetic Calorimeter**  
• EMC: 7x146 PbF<sub>2</sub> crystals

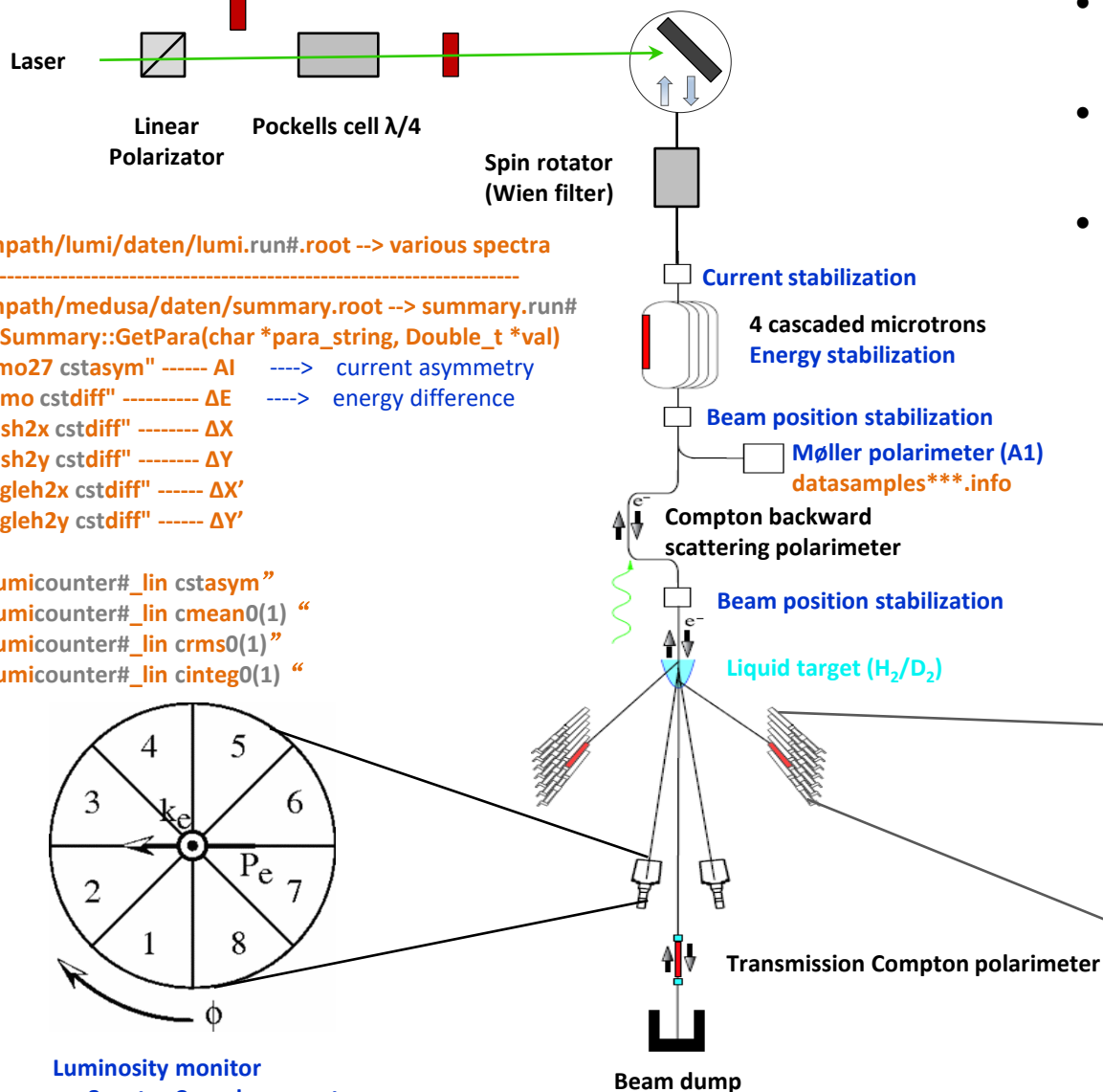
# A4 data

beampath/lumi/daten/  
LogRes/lumi.run#.log

$\lambda/2$  plate (GVZ)

$\lambda/2$  plate  
Rotatable

Photocathode



- Automatic conversion and description of A4 data in xml
- We have finished and tested for small set of data (24 M)
- Next step: application to full data set (85 G)

A typical directory structure for a A4 beam time

beampath/

pola/

analyse/

dataen/

medusa/

analyse/

dataen/

lumi/

analyse/

dataen/

camac/

analyse/

dataen/

target/

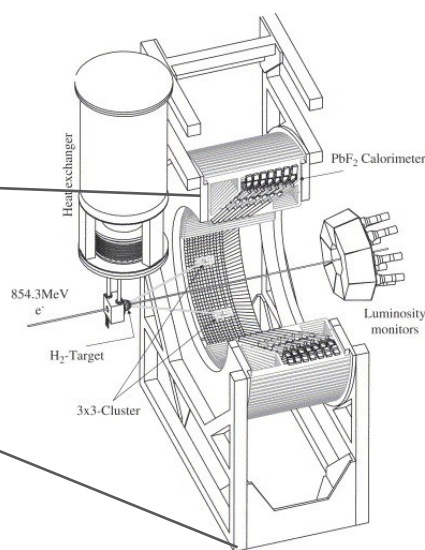
analyse/

dataen/

compton/

analyse/

dataen/



A4 Electromagnetic Calorimeter

- EMC: 7x146 PbF<sub>2</sub> crystals

## A4 dataset

Boxing Gou<sup>id</sup>, Frank Maas<sup>id</sup>

### Abstract

We report on a new measurement of the beam transverse single spin asymmetry in electron-proton elastic scattering at five beam energies from 315.1 to 1508.4 MeV and at a scattering angle of  $30 < \theta < 40$ . The covered  $Q^2$  values are 0.032, 0.057, 0.082, 0.218, 0.613 (GeV/c)<sup>2</sup>. The measurement clearly indicates significant inelastic contributions to the two-photon-exchange (TPE) amplitude in the low- $Q^2$  kinematic region. No theoretical calculation is able to reproduce our result. Comparison with a calculation based on unitarity, which only takes into account elastic and  $\bar{N}N$  inelastic intermediate states, suggests that there are other inelastic intermediate states such as  $N$ ,  $K$ , and  $N$ . Covering a wide energy range, our new high-precision data provide a benchmark to study those intermediate states.

### Included Data Sets

#### File

[logbook/P2\\_testLogbook.html](#)

[run78850/README\\_run78850.html](#)

[run78871/README\\_run78871.html](#)

[conversion\\_report/report\\_data\\_converter.html](#)

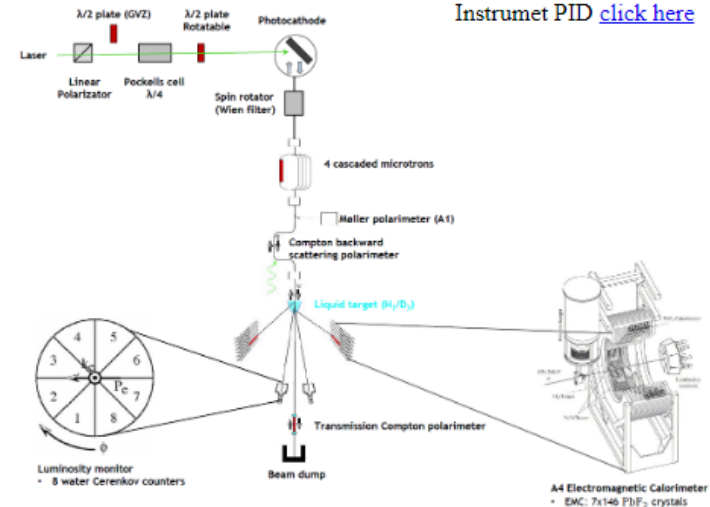
#### Description

Electronic Lab-Notebook containing automatic and manual entries.

Measurement with Foerster: 18015, run time: 300s

Measurement with Foerster: 18017, run time: 500s

Report log file of data converter.





### References

- [Study of Two-Photon Exchange via the Beam Transverse Single Spin Asymmetry in Electron-Proton Elastic Scattering at Forward Angles over a Wide Energy Range.](#)
- [New Measurements of the Beam Normal Spin Asymmetries at Large Backward Angles with Hydrogen and Deuterium Targets.](#)
- [A4 instrument.](#)

## Everything has been prepared for publication of data

- Preparation of landing page
- Conversion of the electronic logbook (based on eLog by PSI) in terms of the xml format
- Conversion of the A4 raw data in terms of the xml format
- The xml format is both human and machine readable

## A4 dataset

Boxing Gou , Frank Maas 

### Abstract

We report on a new measurement of the beam transverse single spin asymmetry in electron-proton elastic scattering at five beam energies from 315.1 to 1508.4 MeV and at a scattering angle of  $30 < \theta < 40$ . The covered  $Q^2$  values are 0.032, 0.057, 0.082, 0.218, 0.613 (GeV/c)<sup>2</sup>. The measurement clearly indicates significant inelastic contributions to the two-photon-exchange (TPE) amplitude in the low- $Q^2$  kinematic region. No theoretical calculation is able to reproduce our result. Comparison with a calculation based on unitarity, which only takes into account elastic and  $\bar{N}N$  inelastic intermediate states, suggests that there are other inelastic intermediate states such as  $N$ ,  $K$ , and  $\bar{N}$ . Covering a wide energy range, our new high-precision data provide a benchmark to study those intermediate states.

### Included Data Sets

#### File

[logbook/P2\\_testLogbook.html](#)

[run78850/README\\_run78850.html](#)

[run78871/README\\_run78871.html](#)

[\\_conversion\\_report/report\\_data\\_converter.html](#)

#### Description

Electronic Lab-Notebook containing automatic and manual entries.

Measurement with Foerster: 18015, run time: 300s

Measurement with Foerster: 18017, run time: 500s

Report log file of data converter.

## A4 Logbook

### Entry 1: Start of first P2 testbeam

Date: Wed, 02 Oct 2013 17:52:46 +0200  
Subject: Machine/Beam  
Type: Beam on  
Comment: (content removed) Wehnelt = -25 V Beam energy = 855 MeV (content removed) (content removed) (content removed)

### Entry 2: EMI Phototube data sheet Q.E. and HV

Date: Wed, 02 Oct 2013 18:31:24 +0200  
Subject: Hardware  
Type: Info

### Entry 3: Q.E. Plot for EMI PMT SN 509 and SN 518

Date: Wed, 02 Oct 2013 18:43:59 +0200  
Subject: Hardware  
Type: Info

## Everything has been prepared for publication of data

- Preparation of landing page
- Conversion of the electronic logbook (based on eLog by PSI) in terms of the xml format
- Conversion of the A4 raw data in terms of the xml format
- The xml format is both human and machine readable

## A4 dataset

Boxing Gou<sup>id</sup>, Frank Maas<sup>id</sup>

### Abstract

We report on a new measurement of the beam transverse single spin asymmetry in electron-proton elastic scattering at five beam energies from 315.1 to 1508.4 MeV and at a scattering angle of  $30 < \theta < 40$ . The covered  $Q^2$  values are 0.032, 0.057, 0.082, 0.218, 0.613 (GeV/c)<sup>2</sup>. The measurement clearly indicates significant inelastic contributions to the two-photon-exchange (TPE) amplitude in the low- $Q^2$  kinematic region. No theoretical calculation is able to reproduce our result. Comparison with a calculation based on unitarity, which only takes into account elastic and  $\bar{N}N$  inelastic intermediate states, suggests that there are other inelastic intermediate states such as  $N$ ,  $K$ , and  $N$ . Covering a wide energy range, our new high-precision data provide a benchmark to study those intermediate states.

### Included Data Sets

#### File

[logbook/P2\\_testLogbook.html](#)

[run78850/README\\_run78850.html](#)

[run78871/README\\_run78871.html](#)

[conversion\\_report/report\\_data\\_converter.html](#)

#### Description

Electronic Lab-Notebook containing automatic and manual entries.

Measurement with Foerster: 18015, run time: 300s

Measurement with Foerster: 18017, run time: 500s

Report log file of data converter.

## run78850

Boxing Gou<sup>id</sup>, Frank Maas<sup>id</sup>

### Abstract

Subject: Run, Type: Start, Run purpose: asymmetry, Run comment: data, Run time: 300s, Foerster: 18015

### Included Data Sets

#### File

[medusa/daten/info\\_78850.xml](#)

[medusa/daten/info.78850](#)

[medusa/daten/HighVoltages/voltages\\_run78850.xml](#)

[medusa/daten/HighVoltages/voltages\\_run78850](#)

[medusa/daten/Thresholds/thresholds\\_run78850.xml](#)

[medusa/daten/Thresholds/thresholds\\_run78850](#)

[medusa/daten/medusa\\_run78850.root](#)

[medusa/daten/counts\\_elastic\\_78850.xml](#)

[medusa/daten/counts\\_elastic.78850](#)

#### Description

Preliminary fit parameters for energy spectrum of scattered particles.

Source data (ASCII) of info\_78850.xml.

Record of voltage applied to photomultiplier of a channel.

Source data (ASCII) of voltages\_run78850.xml.

Configuration of detector electronics, e.g. to suppress background and avoid signal pile up.

Source data (ASCII) of thresholds\_run78850.xml.

Root file containing medusa detector data. <sup>1)</sup>

Preliminary analysis of elastic events.

Source data (ASCII) of counts\_elastic\_78850.xml.

## Everything has been prepared for publication of data

- Preparation of landing page
- Conversion of the electronic logbook (based on eLog by PSI) in terms of the xml format
- Conversion of the A4 raw data in terms of the xml format
- The xml format is both human and machine readable



## A4 dataset

Boxing Gou , Frank Maas 

### Abstract

We report on a new measurement of the beam transverse single spin asymmetry in electron-proton elastic scattering at five beam energies from 315.1 to 1508.4 MeV and at a scattering angle of  $30 < I < 40$ . The covered  $Q^2$  values are 0.032, 0.057, 0.082, 0.218, 0.613 (GeV/c)<sup>2</sup>. The measurement clearly indicates significant inelastic contributions to the two-photon-exchange (TPE) amplitude in the low- $Q^2$  kinematic region. No theoretical calculation is able to reproduce our result. Comparison with a calculation based on unitarity, which only takes into account elastic and  $\bar{N}N$  inelastic intermediate states, suggests that there are other inelastic intermediate states such as  $N$ ,  $K$ , and  $N$ . Covering a wide energy range, our new high-precision data provide a benchmark to study those intermediate states.

### Included Data Sets

#### File

[logbook/P2\\_testLogbook.html](#)

[run78850/README\\_run78850.html](#)

[run78871/README\\_run78871.html](#)

[\\_conversion\\_report/report\\_data\\_converter.html](#)

#### Description

Electronic Lab-Notebook containing automatic and manual entries.

Measurement with Foerster: 18015, run time: 300s

Measurement with Foerster: 18017, run time: 500s

Report log file of data converter.

```
<?xml version="1.0" encoding="UTF-8" ?>
<resource xmlns:owl="http://www.w3.org/2002/07/owl#" xmlns:qudt="http://qudt.org/1.1/qudt#" >
  <head>
    <date>2022-11-17T08:16:07.955964</date>
    <generator>data_converter</generator>
  </head>
  <data>
    <column1>
      <name>channel number</name>
      <units rel="owl:sameAs" resource="https://doi.org/10.1351/goldbook.D0174">
        <comment>Channel number is somehow related to detected energy.</comment>
        <meanValue>511.44234592445326</meanValue>
        <rangeBottom>1.0</rangeBottom>
        <rangeTop>1022.0</rangeTop>
        <dataset type="xsd:integer">
          <value>1</value>
          <value>2</value>
          <value>3</value>
          <value>4</value>
          <value>5</value>
          <value>6</value>
          <value>7</value>
          <value>8</value>
          <value>9</value>
          <value>10</value>
          <value>11</value>
          <value>12</value>
        </dataset>
      </column1>
    </data>
  </resource>
```

[medusa/daten/HighVoltages/voltages\\_run78850](#)

Source data (ASCII) of voltages\_run78850.xml.

[medusa/daten/Thresholds/thresholds\\_run78850.xml](#)

Configuration of detector electronics, e.g. to suppress background and avoid signal pile up.

[medusa/daten/Thresholds/thresholds\\_run78850](#)

Source data (ASCII) of thresholds\_run78850.xml.

[medusa/daten/medusa\\_run78850.root](#)

Root file containing medusa detector data. <sup>1)</sup>

[medusa/daten/counts\\_elastic\\_78850.xml](#)

Preliminary analysis of elastic events.

[medusa/daten/counts\\_elastic.78850](#)

Source data (ASCII) of counts\_elastic\_78850.xml.

## Everything has been prepared for publication of data

- Preparation of landing page
- Conversion of the electronic logbook (based on eLog by PSI) in terms of the xml format
- Conversion of the A4 raw data in terms of the xml format
- The xml format is both human and machine readable

# Next steps

## A4 dataset

Boxing Gou<sup>id</sup>, Frank Maas<sup>id</sup>

### Abstract

We report on a new measurement of the beam transverse single spin asymmetry in electron-proton elastic scattering at five beam energies from 315.1 to 1508.4 MeV and at a scattering angle of  $30 < \theta < 40$ . The covered  $Q^2$  values are 0.032, 0.057, 0.082, 0.218, 0.613 (GeV/c)<sup>2</sup>. The measurement clearly indicates significant inelastic contributions to the two-photon-exchange (TPE) amplitude in the low- $Q^2$  kinematic region. No theoretical calculation is able to reproduce our result. Comparison with a calculation based on unitarity, which only takes into account elastic and  $\bar{N}N$  inelastic intermediate states, suggests that there are other inelastic intermediate states such as  $N$ ,  $K$ , and  $N$ . Covering a wide energy range, our new high-precision data provide a benchmark to study those intermediate states.

### Included Data Sets

#### File

[logbook/P2\\_testLogbook.html](#)

[run78850/README\\_run78850.html](#)

[run78871/README\\_run78871.html](#)

[\\_conversion\\_report/report\\_data\\_converter.html](#)

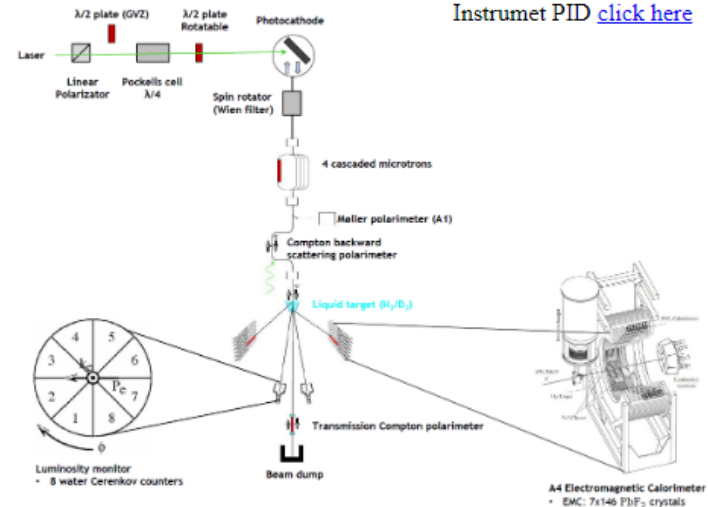
#### Description

Electronic Lab-Notebook containing automatic and manual entries.

Measurement with Foerster: 18015, run time: 300s

Measurement with Foerster: 18017, run time: 500s

Report log file of data converter.



### References

- [Study of Two-Photon Exchange via the Beam Transverse Single Spin Asymmetry in Electron-Proton Elastic Scattering at Forward Angles over a Wide Energy Range.](#)
- [New Measurements of the Beam Normal Spin Asymmetries at Large Backward Angles with Hydrogen and Deuterium Targets.](#)
- [A4 instrument.](#)

- ❑ Test with larger (complete) dataset (85 G)
- ❑ Getting the Persistent Instrument Identification (PID)
- ❑ To publish the data

Thanks for your attention