

Status update: EDS

Antonios Athanassiadis on behalf of the EDS team

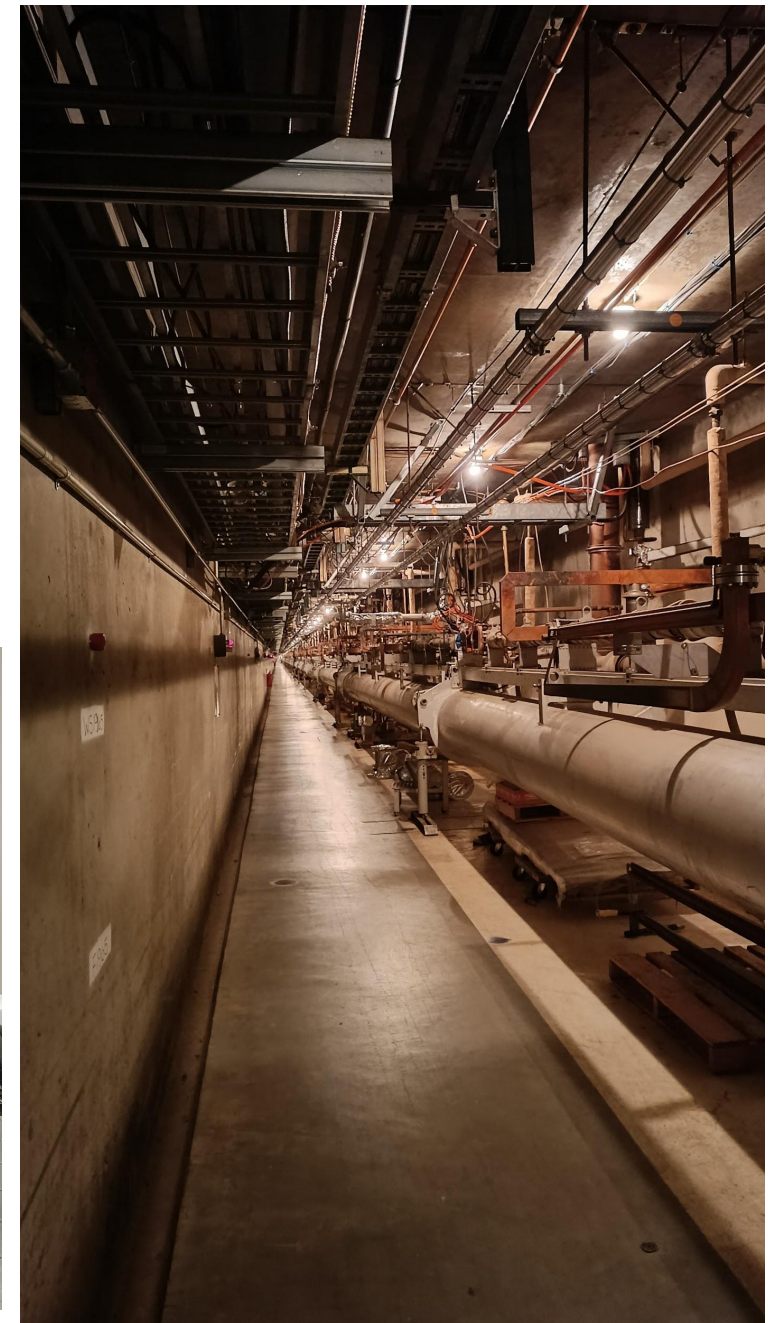
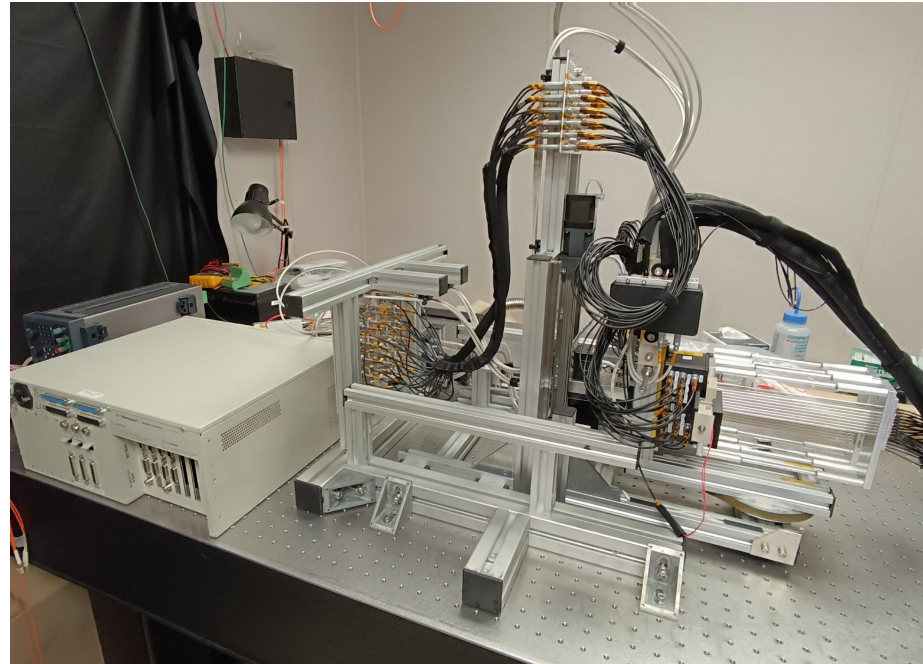
06.06.2024

HELMHOLTZ



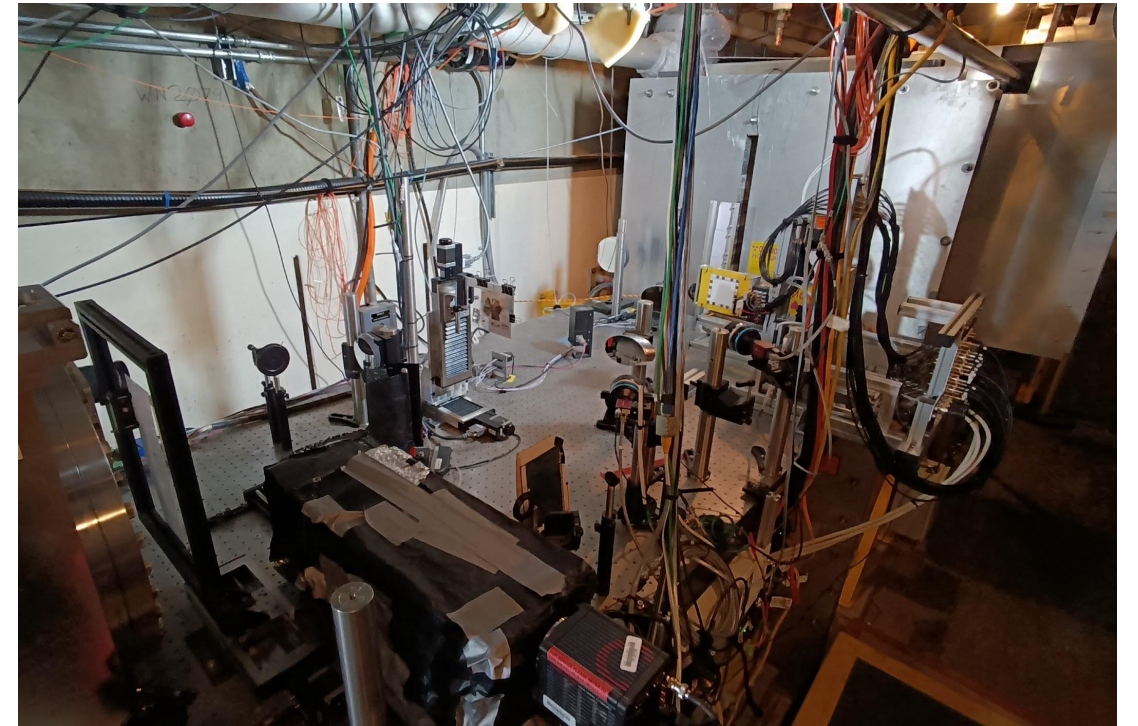
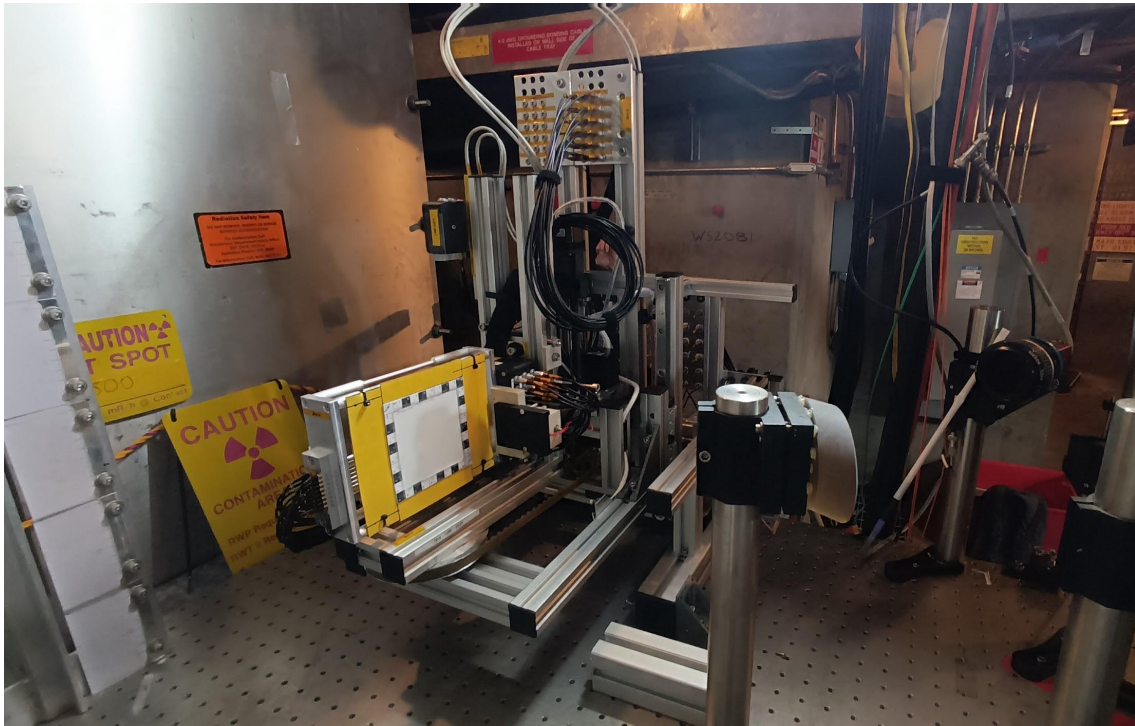
LUXE320 – Status

- Administrative things (IDs, trainings, etc.) finalized
- E320 beamtime on 05/20 ⇒ Very helpful insights
- Successfully found parcel ⇒ Arrived at SFO 05/22 (5 days of travel)
- Set up in lab (PC, detector, motors, LEDs, etc.) and first commissioning



LUXE320 – Status

- Complete installation in tunnel **06/04 – 06/05** ⇒ 19 channels available!
- DAQ development
 - Hardware control
 - Scripts for asynchronous EPICS to PC data transfer
 - FACET/DESY-DAQ synchronization



LUXE320 – To be discussed

Run list:

- No E320 shift before summer shutdown
- BUT dedicated beam time for us
 - ⇒ Night shift after other experiment on **06/12 – 06/17**
- Test trigger/sync parasitic before shift
- Calibrate detector with well defined ‘pencil’ beam
- Test detector with Al target → Measure bremsstrahlung

Prospect for end of year:

- Upgrade detector to 32 channels → prepare custom cables
- Join beam time of E320 ~ October (?)

