

Status Update EDS

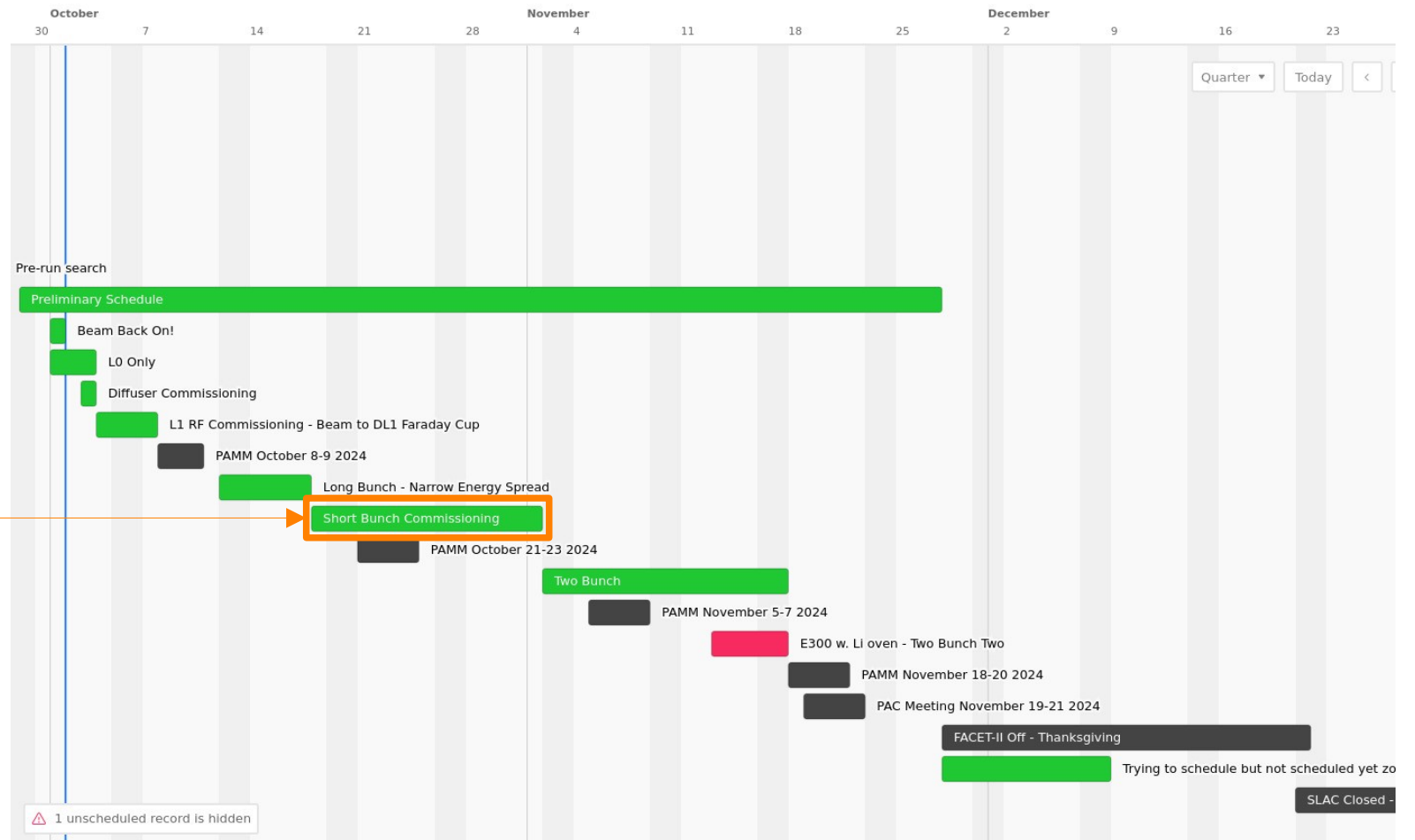
Luke Hendriks on behalf of the EDS team
02.10.2024

General News

- Preparations for second campaign at SLAC in progress
 - Leaving in 1-2 weeks
 - 1st parcel with electronics components shipped and arrived after 3 days
 - Online safety training in progress, in person training in planning
 - FACET is ramping up since Monday
 - Ivan confirmed that we can move our camera to a better position on the dump table

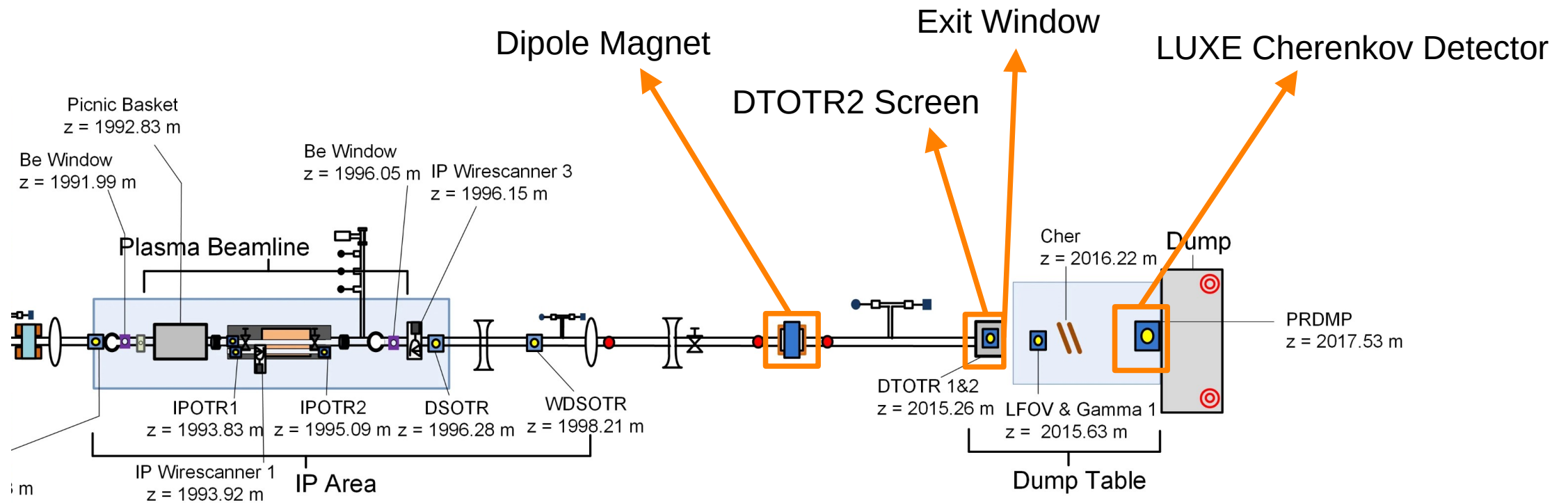
FACET Beam Time Schedule

- FACET beam time schedule finally (partially) available
- E320 requested beam time during 'Short Bunch Commissioning', after PAMM October 21-23



LUXE320 Data Analysis

- Only had a (roughly) mono-energetic beam at 10 GeV
- Dipole magnet fans out electron spectrum after IP
- DTOTR2 screen (before exit window)



LUXE320 Data Analysis

Combining DTOTR2 and Cherenkov data

- Taking into account:
 - Magnification due to dipole
 - Effects from exit window (negligible)
- Black: mean projection onto y-axis of beam spot from DTOTR2 screen
- Colors: Y-scan of straws in FACET coordinates

