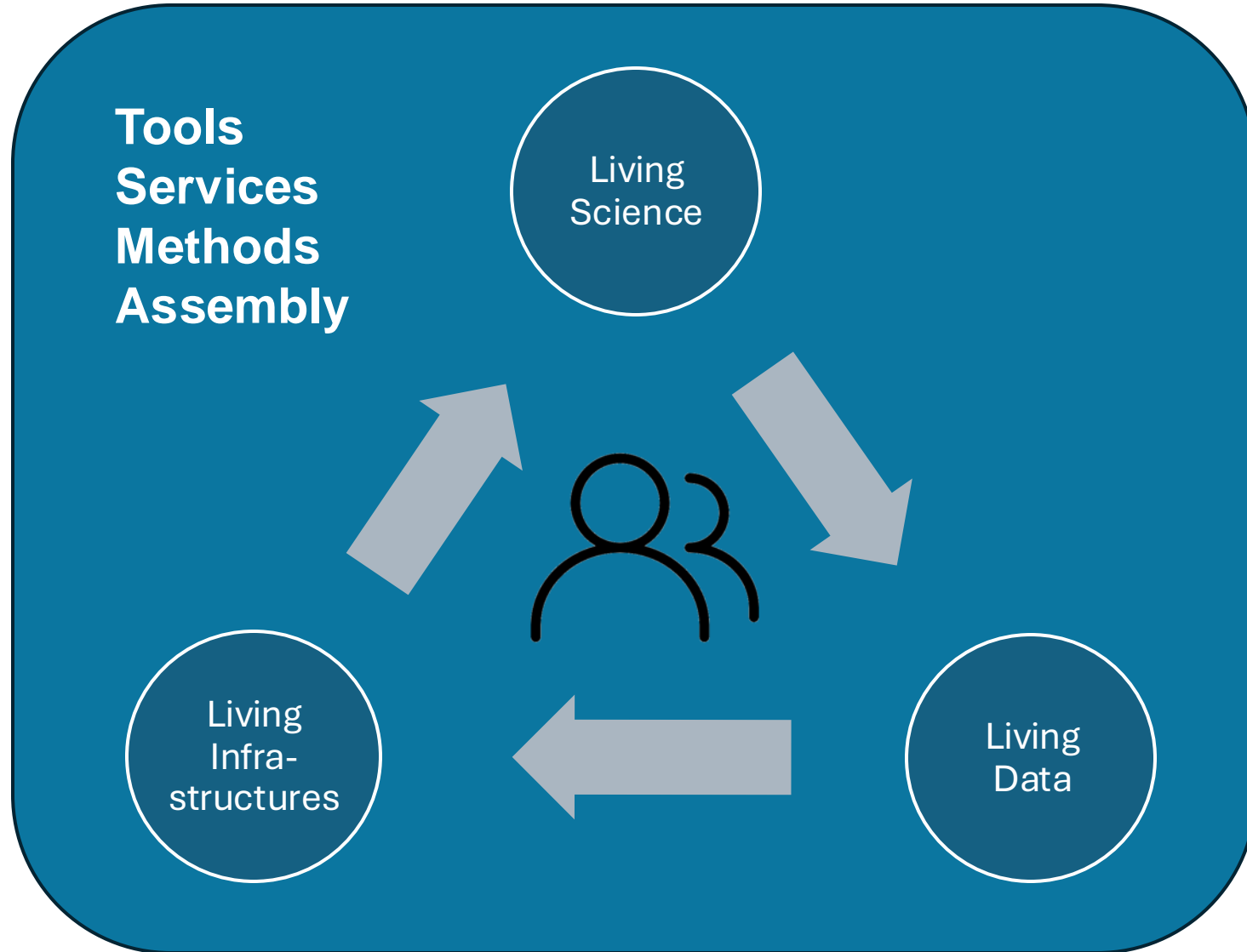


- Software as a service
- ML as a service
- Curation
- ...
- ...

- User interfaces
- Sustainability
- AAI
- Storage
- Compute



Use case criteria to be considered

Which elements do they involve? Connection to TA / pillars and requirements on them

Which problems do they solve?

Which gaps do they fill?

How could they be generalized / what is generic?

End-to-end FAIR use case?

Connection to DRP? – a digital output of a research process (which category: publication, data set, software, ...)

How is the use case viewed from outside of PUNCH?

Define input – procedure – output? Specify workflow.

Operation model? - what is required for the use case, and how to organize that?

Sustainability?

Use Cases

key4HEP-based workflows for future collider-based and other experiments

- Ph.D. / master thesis?
- Identify with Joe's "HEP" use case

Frank, Philip, Harry

Data generation: Data and workflow management chain for emerging experiments and simulations in PUNCH

- relevant: intent – instrument building, simulation running, preparing data for publication

Thomas, Uwe, Manuel,
Susanne, Hubert, Gunnar

Pheno interpretation of data (HEP / astro / CERN open data etc. combination)

- combine with NHR usage use case / ErUM-Data analysis facilities

Sebastian, Arnulf, Lukas, Joe

AI-based automated generation of workflows

Gregor, Arman, Victoria

Analysis of big data sets, visualization, live interaction – astro / astroparticle

Elena, Markus, Gernot, Christoph,
Matthias

Workflow for future observation

Cristina, Christof, Hermann,
Jakob, Stephan S., Ramesh

