

NAF User Committee

December 2011.

NAF Operations Status Report

Yves Kemp, Andreas Haupt

On behalf of the NAF Operators

December 14, 2011

Core router upgrade in HH computing centre

- > Preliminary planned on 11th January 2012
- > Increase of backbone bandwidth
- > Will most probably lead to short network interruptions
- > As it is a good choice to use this slot for other maintenance work, there will most probably be a (partly) NAF downtime on that day



Problems last month

/tmp on batch farm nodes full

- > caused by a job violating the "don't use /tmp but \$TMPDIR" constraint

Software installation problems

- > Atlas reports a software installation just works on some NAF nodes and doesn't on others
- > under investigation - but problematic to debug
- > problem not isolated, yet



Problems last month (2)

Lustre slow

- > HH Atlas Lustre file system affected
- > caused by simple overload (System delivering > 1.5 GByte/s)
- > it is a shared ressource: a single job might be slower than expected



Problems last month (3)

Lustre file server problems

- > already reported last month
- > leads to inaccessible Lustre file systems
- > some Lustre file servers occasionally report connectivity problems to DDN storage (connected via fibre channel) block devices and remount the affected file systems readonly
- > Most probably is NOT a Lustre problem but an infrastructure problem
- > debugging difficult - call opened at DDN



Action Items

1101-2 : naf_token for ubuntu&MacOSX

> nothing new

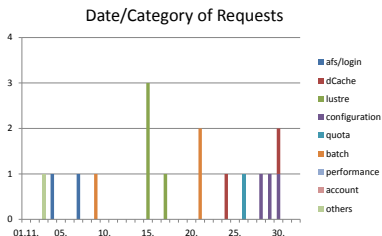
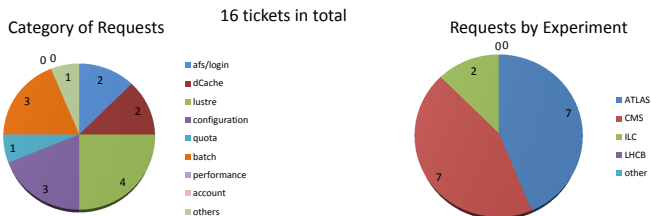
1109-3 : do we want a memory limit on WGS

> closed?



Stats from help desk - Thanks to B. Kahle

Naf-helpdesk@desy.de (Nov.1st-Nov.30th 2011)



Benjamin Kahle – NAF-helpdesk

