

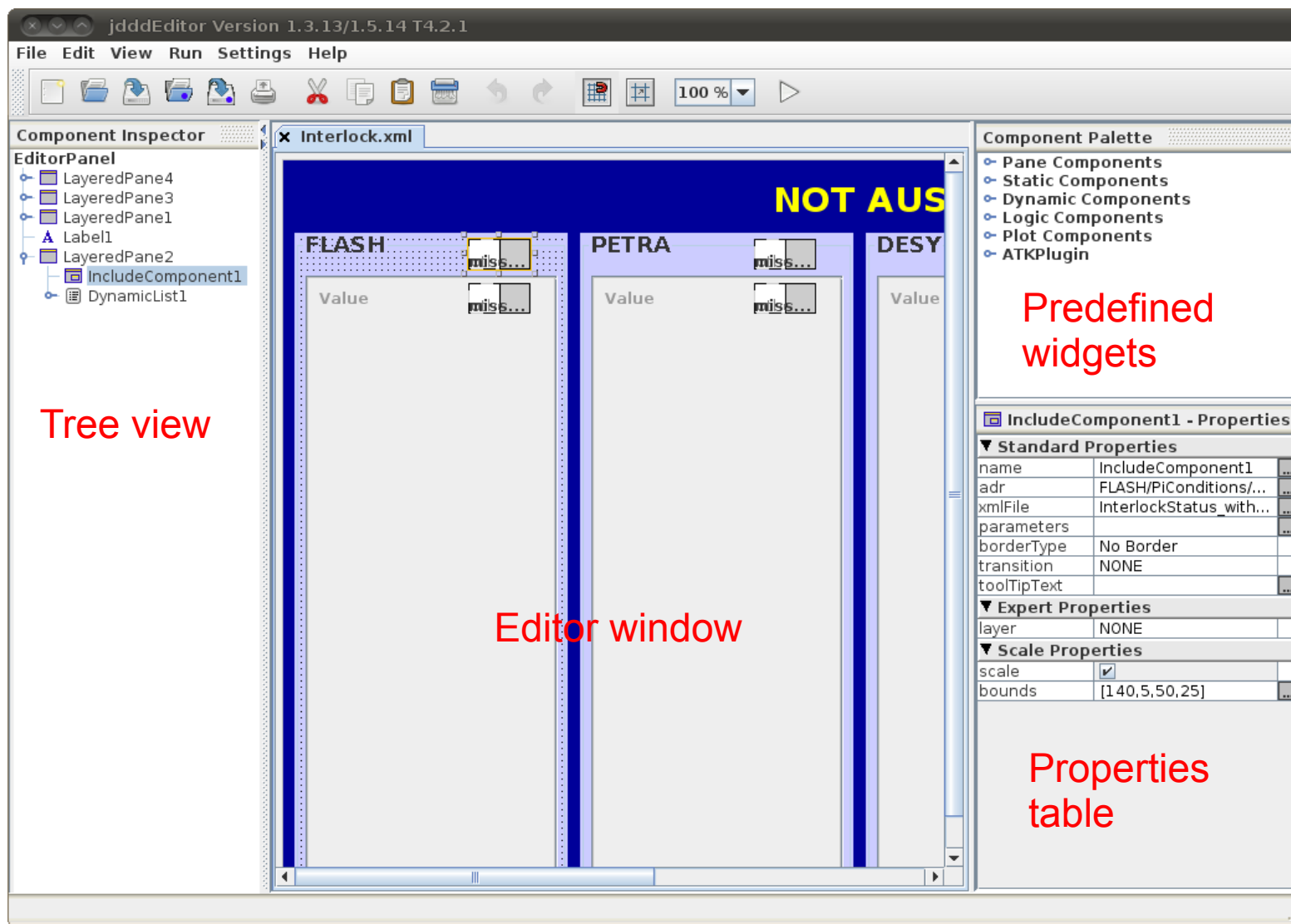
jddd

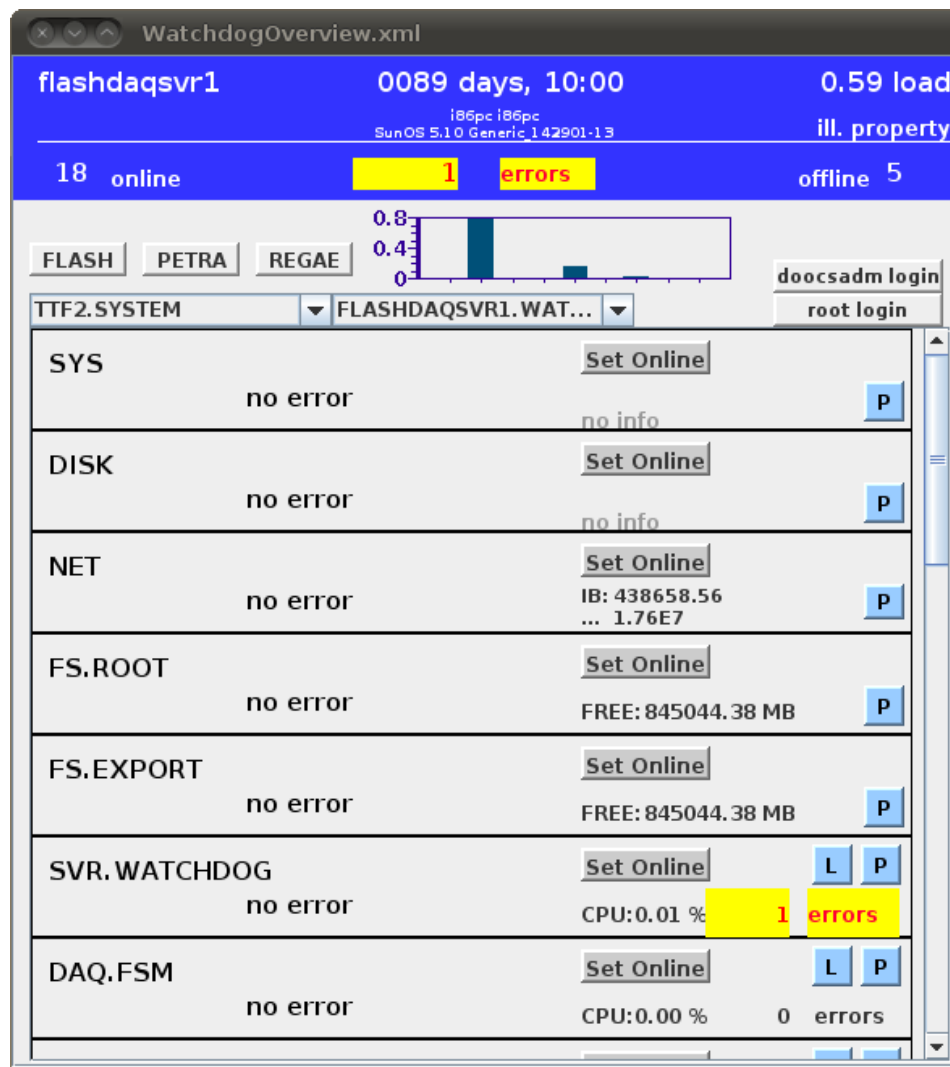
**graphical display
development for the
XFEL**

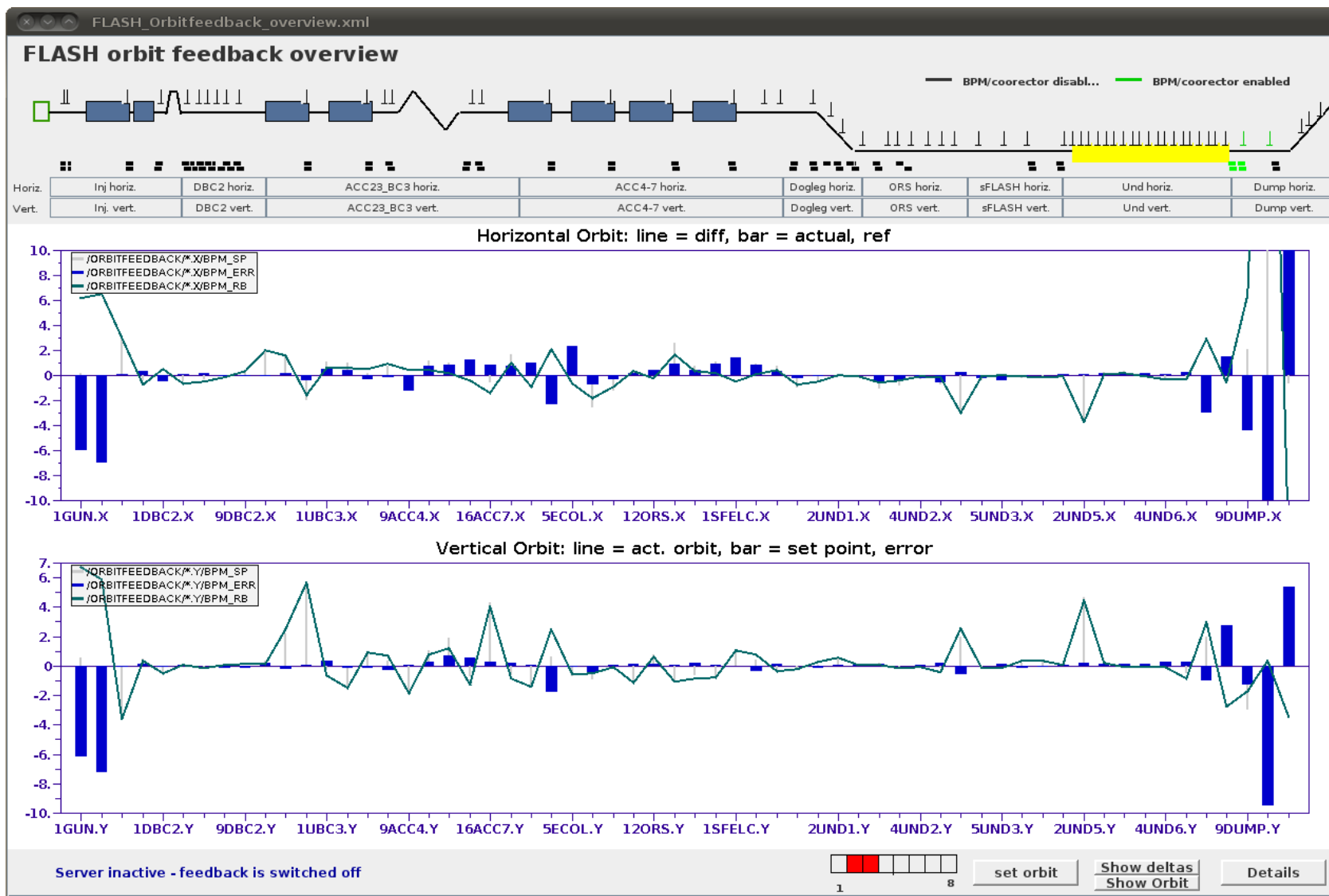
Elke Sombrowski

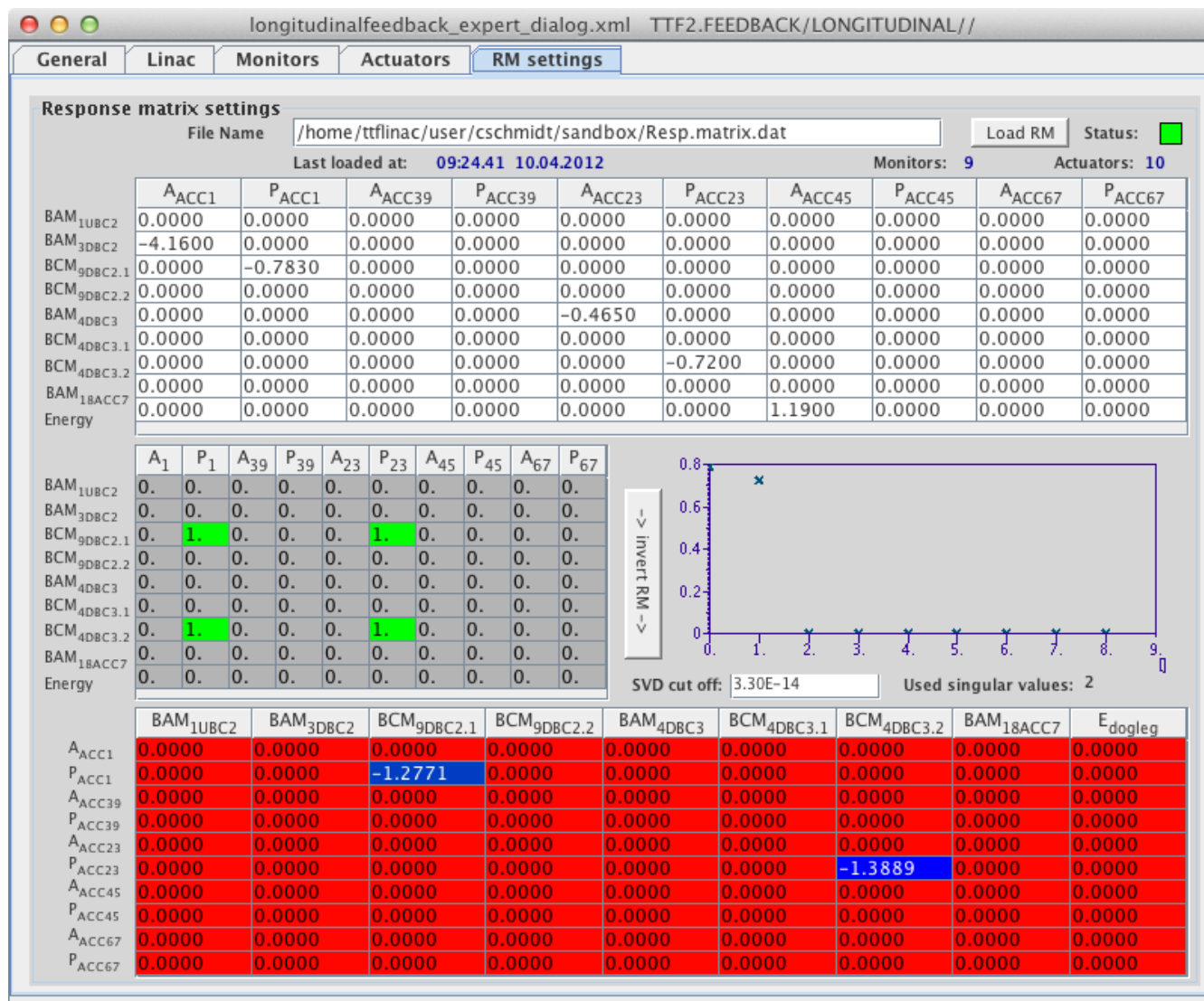
- What is jddd?
- Screenshots
- jddd usability and performance
- Statistics:
 - Number of participants in jddd training
 - Number of created displays at DESY
- Outlook

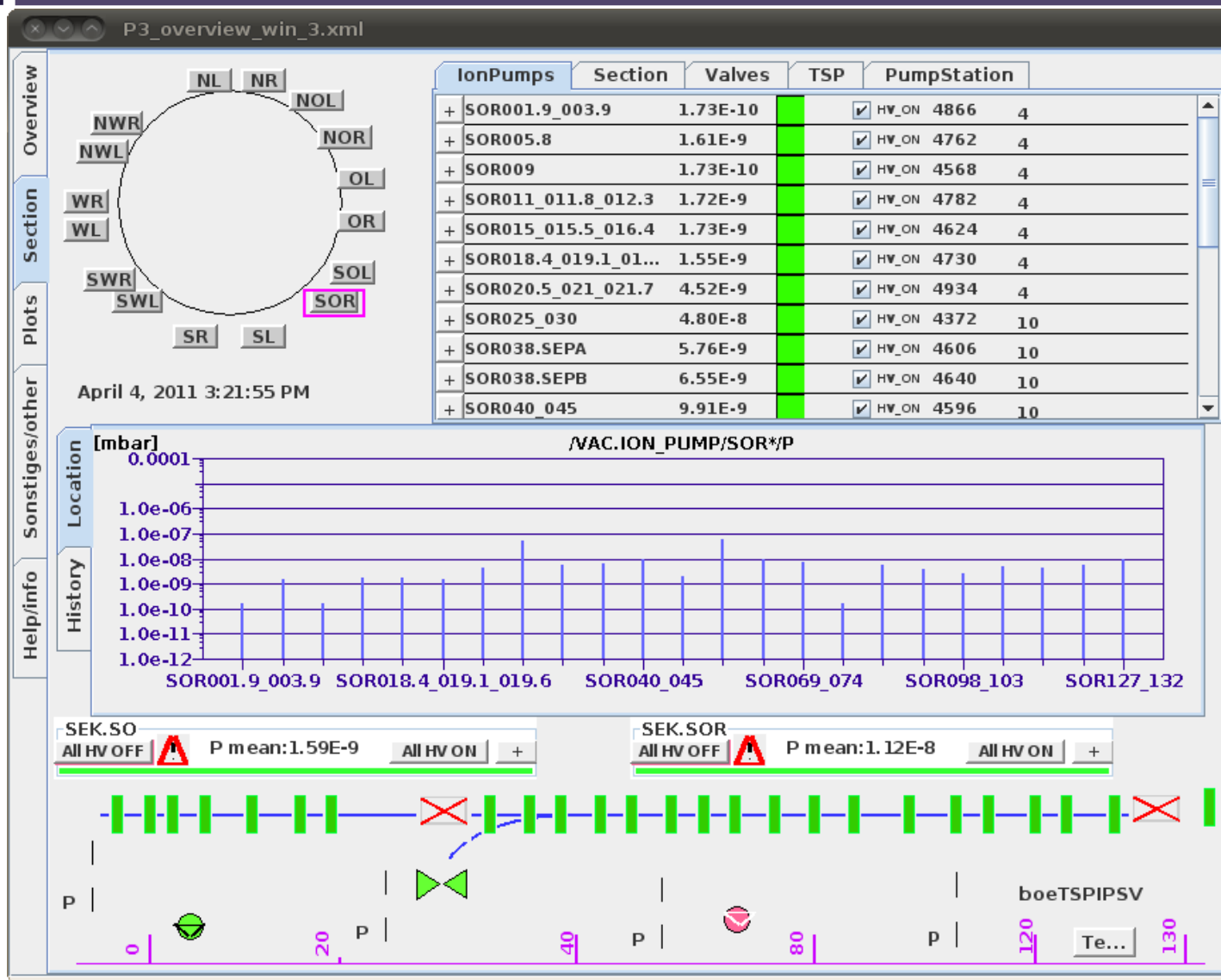
- jddd is a graphical editor and runtime engine for control system displays
- jddd = Java Doocs Data Display
- Developed at DESY (MCS4 group)
- The jddd editor is similar to standard editors like in Netbeans or Eclipse
 - Editor is easy to use for non-programmers
 - Rich set of predefined widgets/components for control panel design
- All control systems used at DESY are supported:
 - DOOCS, TINE, TANGO, EPICS

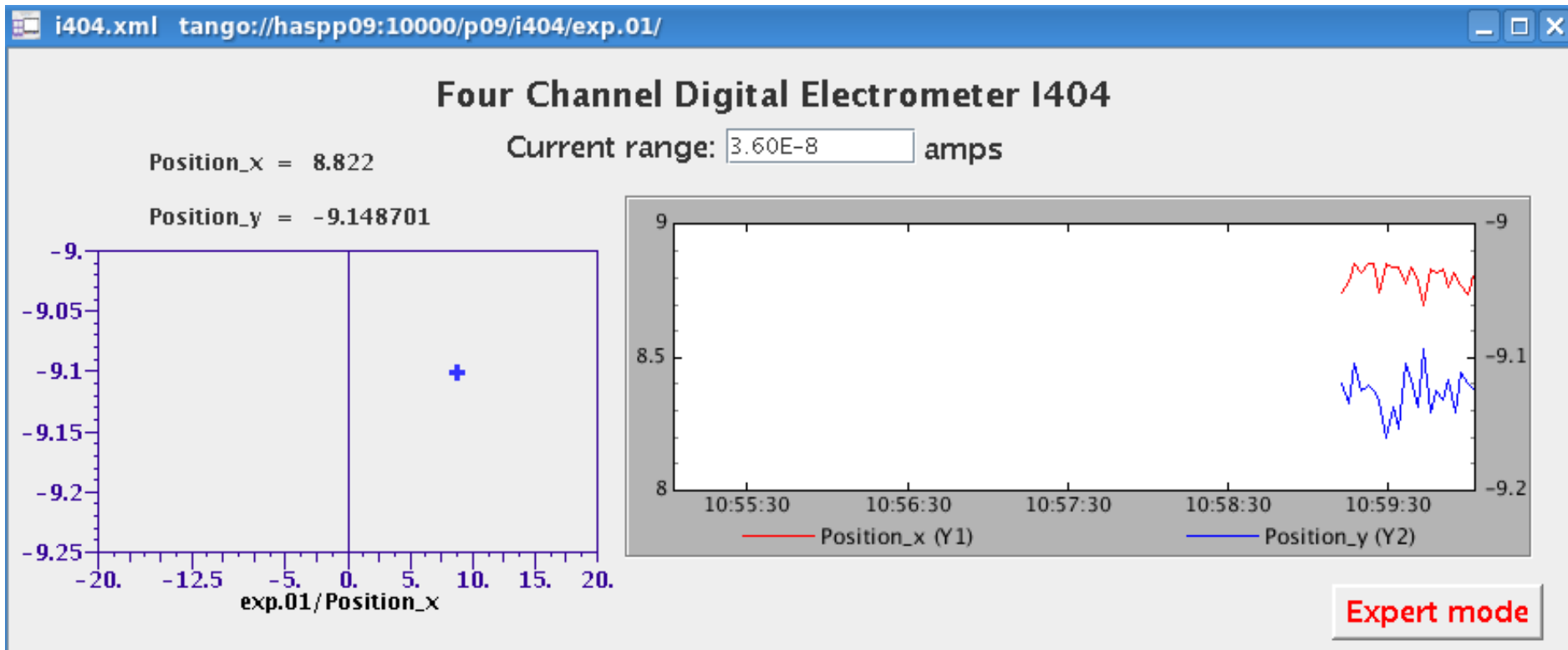
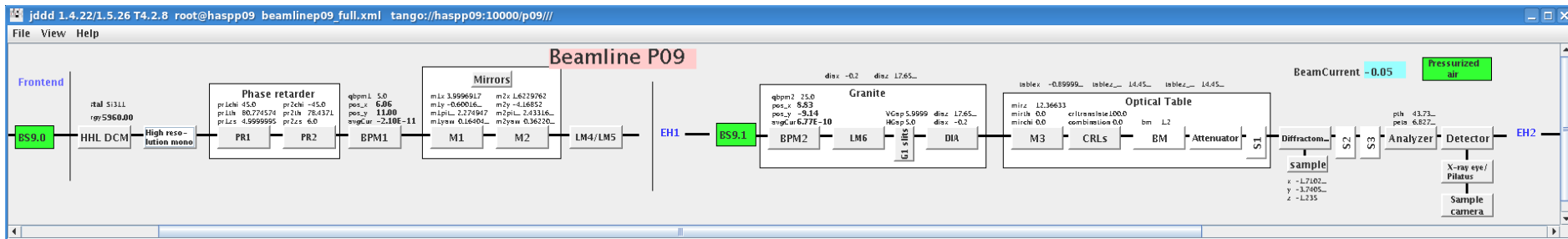












- The panel developers like jddd because:
 - It is easy to use
 - No programming skills are needed
 - Complex control system panels are quickly developed with ready-made widgets
 - We(MCS4) offer jddd training courses
- Performance
 - In general fine
 - Excellent at runtime for reasonable update rates
 - A huge number of Swing components ($O(1k)$) affects startup time

- jddd training:
 - 2009: 2 trainings at DESY with 25 participants
 - 2011: 4 trainings at DESY with 43 participants and 1 workshop in Grenoble with 12 participants
- Number of created jddd panels at DESY:
 - Since 2008 approx. 1500 jddd panels were stored in our subversion repository.

Next steps in jddd development:

- We will focus on runtime stability and performance tuning.
- The widgets will be improved according to the wishes of the users.
- The test facility is FLASH:
 - New high level displays will be developed with jddd
 - Important displays will be converted (ddd → jddd) and improved using the new features of jddd.

jddd

- Introduction
- + Special Features
- + Screenshots
- JAVA Web Start
- Start Panels
- Flash Tutorial
- Help
- Papers
- License
- Contact

- Webpage:
 - <http://jddd.desy.de>
- Documentation:
 - <http://jddd.desy.de> -> Help
- Examples:
 - <http://jddd.desy.de> -> Start Panels
- Contact:
 - jddd@desy.de