



Introduction

Tobias Haas
Technical Meeting
9 March 2012

Homework from last time



■ DAQ and Control needs

- 2 Mar: From the lists worked out by C. Youngman a conceptual floor plan for placing the racks in SPB will be made.

→ First results will be shown

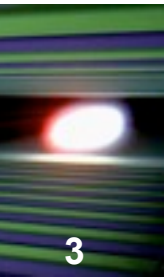
- 2 Mar: A list similar to the one made by C. Youngman and A. Mancuso for SPB will be made for FXE

■ Labs in XHQ

- Two working groups will further specify common labs
- Lab responsables produce a short description of what will be done in their labs
- The common labs planned by WP79 have to be specified.

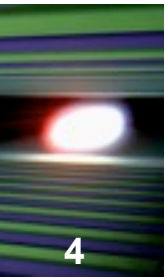
→ see status

Home from last time cont'd

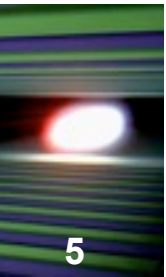


- The lab requirements have to be better specified
 - the room book for all labs except those of WP34 is complete
- Labs should have doors to the outside to move in bulky pieces of equipment
 - this will be still open.
 - Wait for final floor plan
- Access to freight elevator
 - Floor plan has been optimized with wider corridors
- Are all labs requested actually included in the floor plan?
 - WPs need to check again once final floor plan is available (End March)

Home from last time cont'd



- Hutch temperature requirements
 - see presentation by A. Aquila
- Include these requirements into the planning:
 - Storage of waste and dangerous goods
 - Gas house for bottles outside the hall
 - Storage and filling station for LH2 and LN2
 - Helium recovery
 - Done



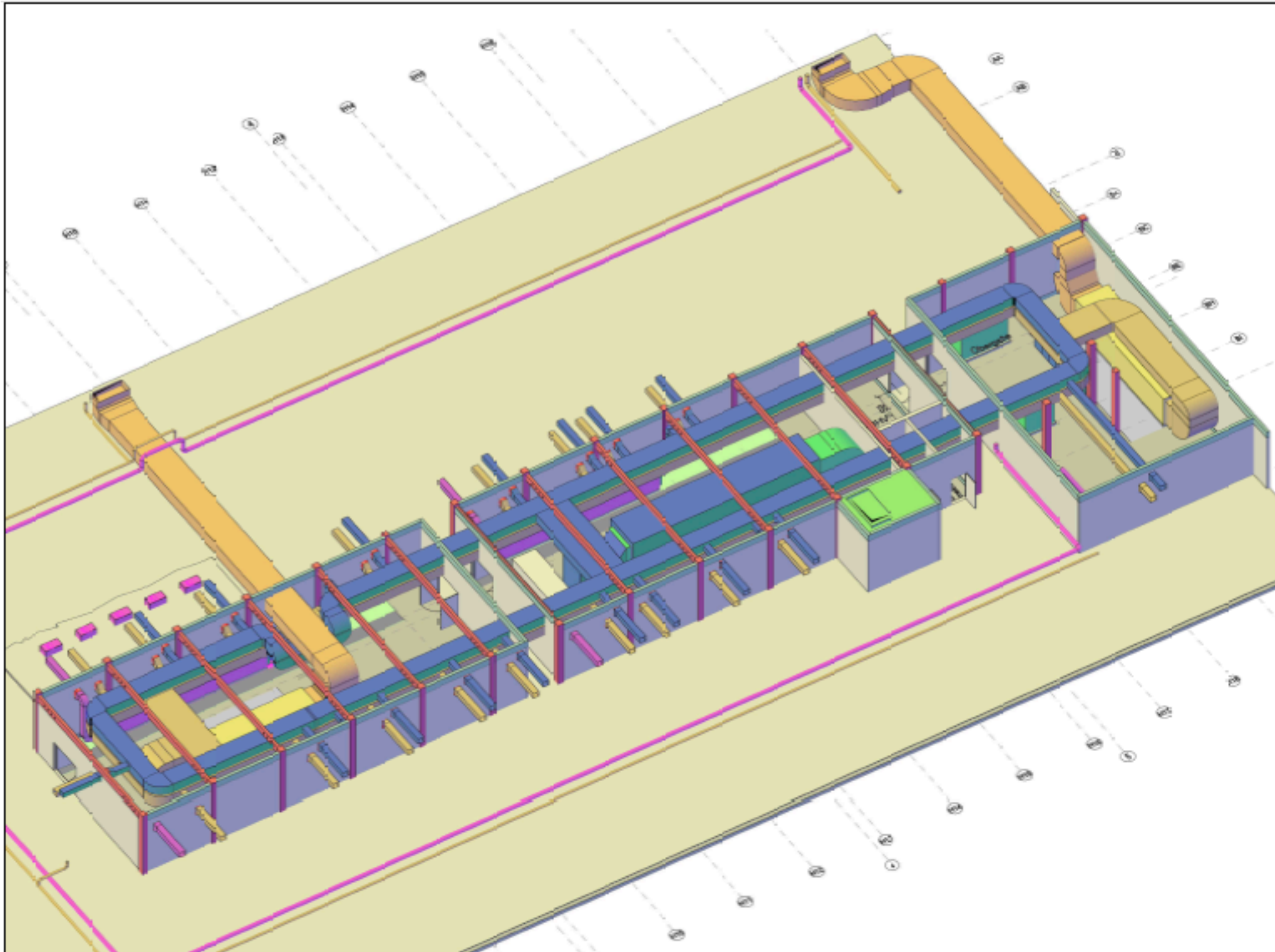
- Room book is almost final
 - WP84 is still missing due to lack of time
- Planning group (IG, Architect, Lab Planners, TC, FM) have agreed on the conceptual floor plan
 - Ceiling height
 - Placement of pillars
 - width of corridors
 - size of infrastructure (ventilation, power etc...)
 - Placement of air ducts
 - General Interface to rest of building



Infrastructure



7



Status Hall Floor

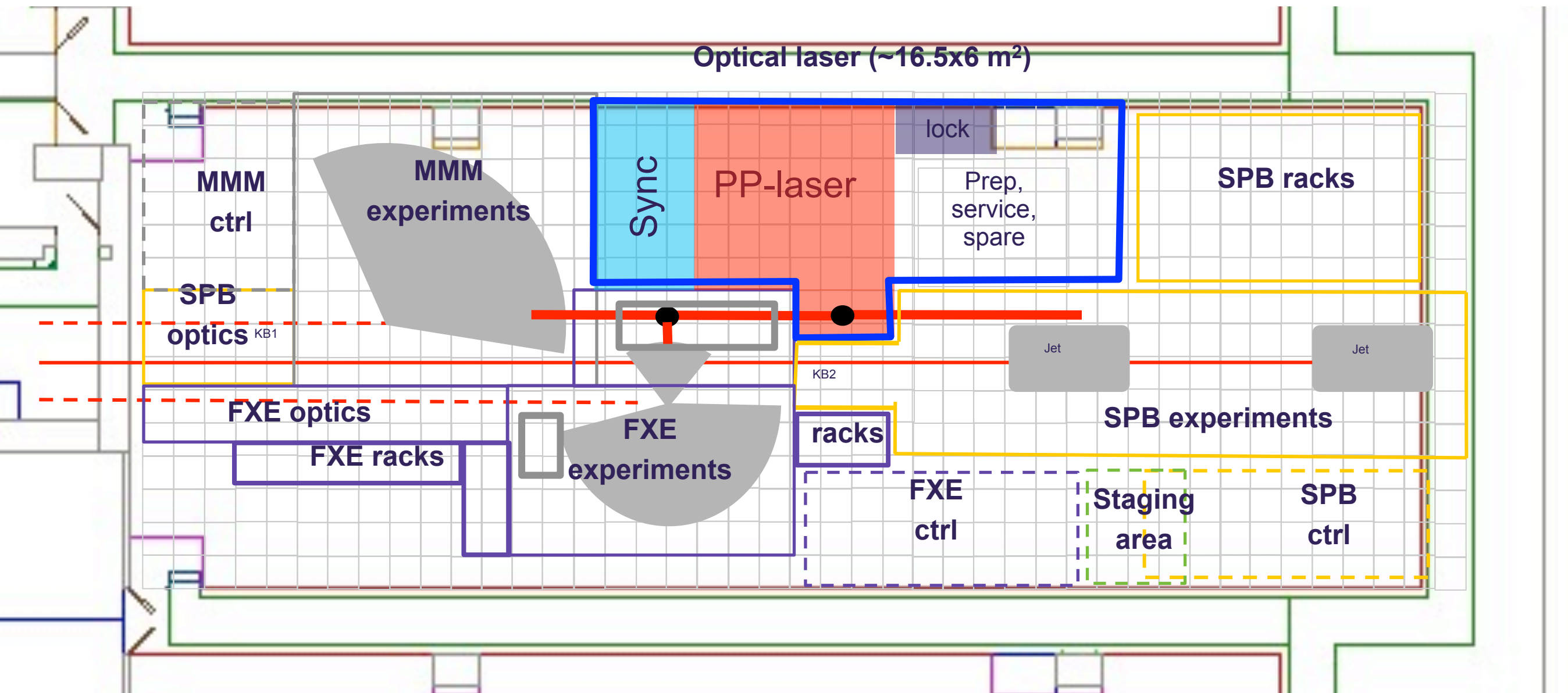


- Placed control and rack hutches
 - FXE and SPB
- New info by C. Bressler
- Started to detail individual hutch requirements
 - See talk by A. Aquila
- Started modelling in 3 D

Conceptual floor plan for SASE 1 instruments



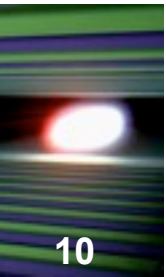
(work in progress, MMM= 80-90 m², FXE= 87.5 m², SPB= 95 m²)



Some numbers (boxes 1x1 m²)

- Total SASE 1 floor space: ~43x15 m² (2 x 1.4 m separation of incoming x-ray beams)
- Control: 4x6m², Electronics: 4x2 m², optics: beam 50 cm from wall, 0.1 m x-ray wall t.)

Status Hall Floor



- Placed control and rack hutches
 - FXE and SPB
- New info by C. Bressler
- Started to detail individual hutch requirements
 - See talk by A. Aquila
- Started modelling in 3 D

