

... SL6 addendum – DESY specific changes

➤ See https://dvinfo.ifh.de/SL6_User_Information



... SL6 addendum – apps

➤ basics:

- Minimal #of systems, mechanisms, packages, DESY-specific customizations
- No “single-user” software
- Preferably no “multi-version” software
- No “dependency-preservation” for “multi-version” software

➤ Dropping /opt/products

- /opt/products use customized RPM-mechanism
 - To support multiple versions of the same sw including all dependencies
 - Multi-Version packages only in rare cases and only if (almost) free of dependencies
- Dropping @sys
- rather use standard mechanisms
 - usually installs in /opt with links in /usr/local/bin → always in your PATH
- Very few exceptions as plain afs-installs
 - Intel compiler
 - Texlive 2011



... SL6 addendum – ini

➤ Dropping `ini` - use modules instead

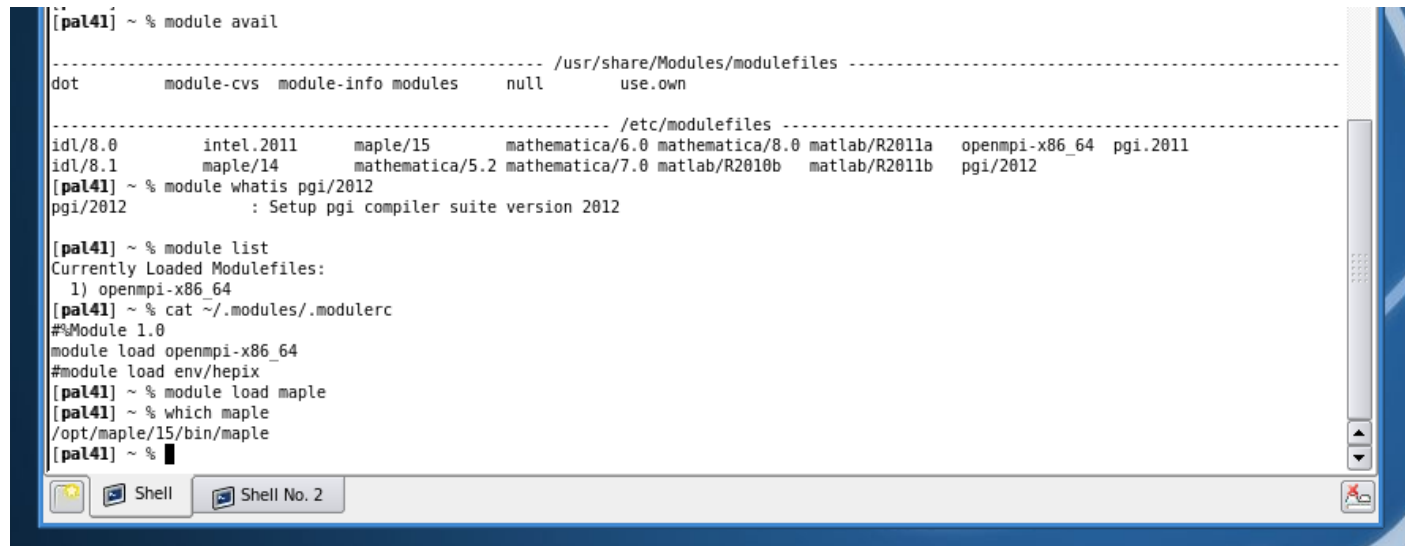
- ini is DESY specific, everyone else uses modules
- several packages come already with module-files
- easy to customize/extend for personal needs
- only available software is actually listed as being available (etc)

➤ ini still available on SLD5, will enable modules to keep SLD5/6 in sync.

➤ No default versions

➤ Use versioned commands like maple15, ifort2011, matlabR2011b

➤ or:



```
[pal41] ~ % module avail

----- /usr/share/Modules/modulefiles -----
dot          module-cvs  module-info  modules      null          use.own

----- /etc/modulefiles -----
idl/8.0       intel.2011    maple/15     mathematica/6.0 mathematica/8.0 matlab/R2011a openmpi-x86_64 pgi.2011
idl/8.1       maple/14     mathematica/5.2 mathematica/7.0 matlab/R2010b  matlab/R2011b  pgi/2012
[pal41] ~ % module whatis pgi/2012
pgi/2012      : Setup pgi compiler suite version 2012

[pal41] ~ % module list
Currently Loaded Modulefiles:
  1) openmpi-x86_64
[pal41] ~ % cat ~/.modules/.modulerc
##Module 1.0
module load openmpi-x86_64
#module load env/hepix
[pal41] ~ % module load maple
[pal41] ~ % which maple
/opt/maple/15/bin/maple
[pal41] ~ %
```

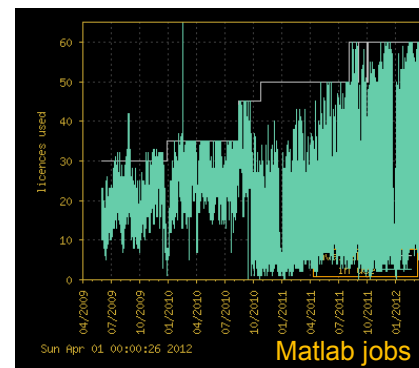
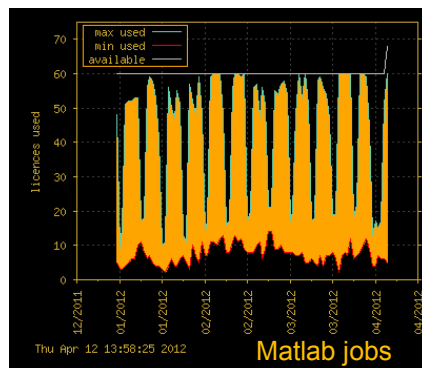
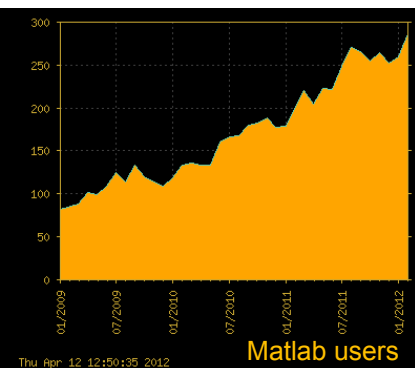
... SLx addendum – apps

➤ Dropping 32-bit (apps)

- Mathworks drops 32-bit versions of Matlab
 - Only 64-bit versions in the future – nothing for 32-bit OS'
 - Ansys dropped 32-bit as well; some Oracle apps 64-bit only; etc
 - Increasing number of vendors (oracle, ibm) and distros are getting on the same track
- Mathworks Seminar @ DESY 11.05.2012
 - See <http://www.mathworks.de/company/events/seminars/seminar64162.html>

➤ License Usage

- The only frequent support question (<>office2010) relates to “no licenses available”
- Constantly monitor license usage; notification whenever licenses are exhausted
- Heavily increased number of licenses for matlab, origin, mathematica etc
- Number of users is growing fast (*4 since 2009) , much faster than budget ;-)
- Number of licenses roughly keep up (*2.3 since 2009)



... SLx addendum – MS

➤ No shortcuts for Microsoft apps on terminal server

- R2008/Win7: Authentication required before session start
- No (easy) way to start seamless apps.
- Rdesktop doesn't support the auth mechanism
- Use xfreerdp instead

