

# Installation

# Outline

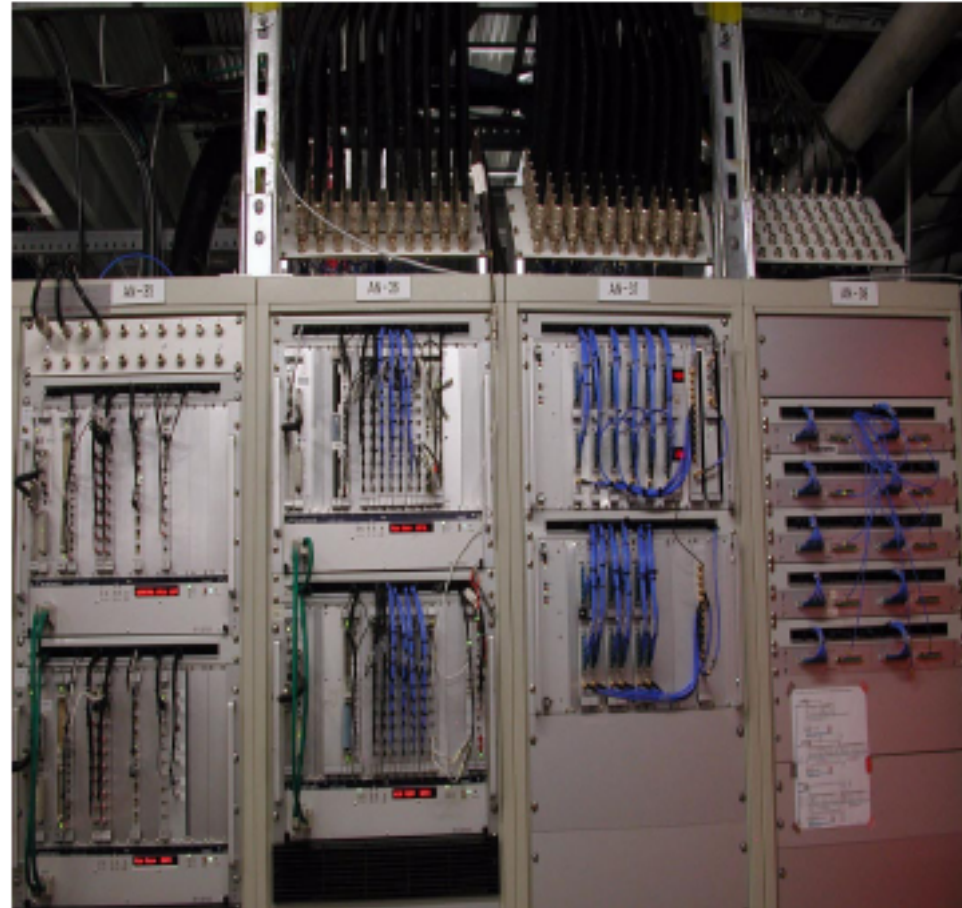
- Locations for Installation
- Present cable plant
- Proposed installation
- Cable plant

# Present cabling in injector and linac

Gun and ACC1



ACC2, ACC3, ACC4 & ACC5



# Proposal for Installation

- Perform tests and evaluation of the ATCA based LLRF system at different locations:
  - Laboratory, MTS, ACC1, ACC456
- Finally operate ACC4,5,6 with ATCA system
  - Split probes and forw./refl. Power
  - Operation transparent to user operation if loop remains open, and WGT and PZT are not operated
  - Similar to ACC1 in parallel to VME system
- Allows for future software development and does not interfere with machine operation

# Options for Installation

## Modulteststand



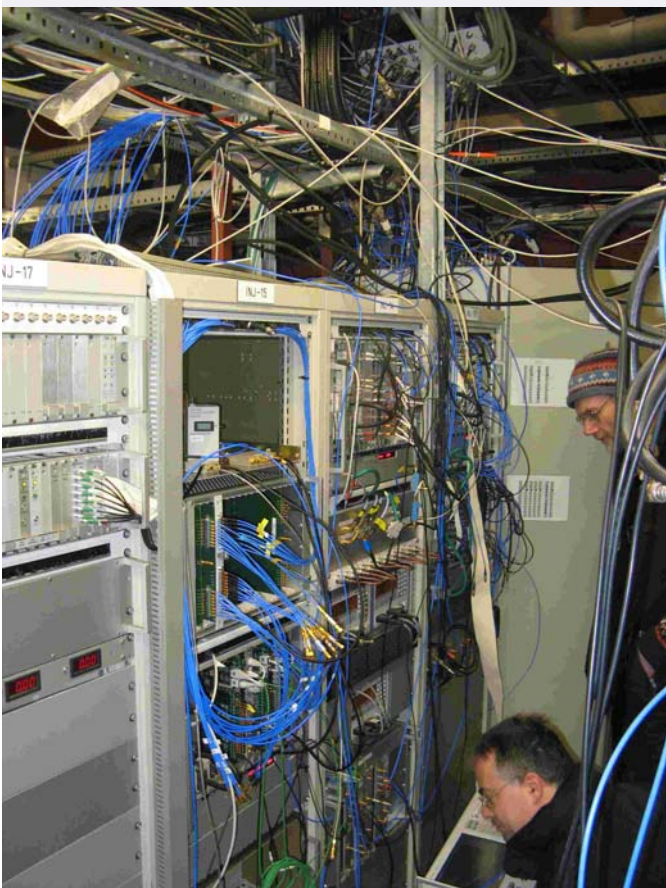
Cryomodule Cave



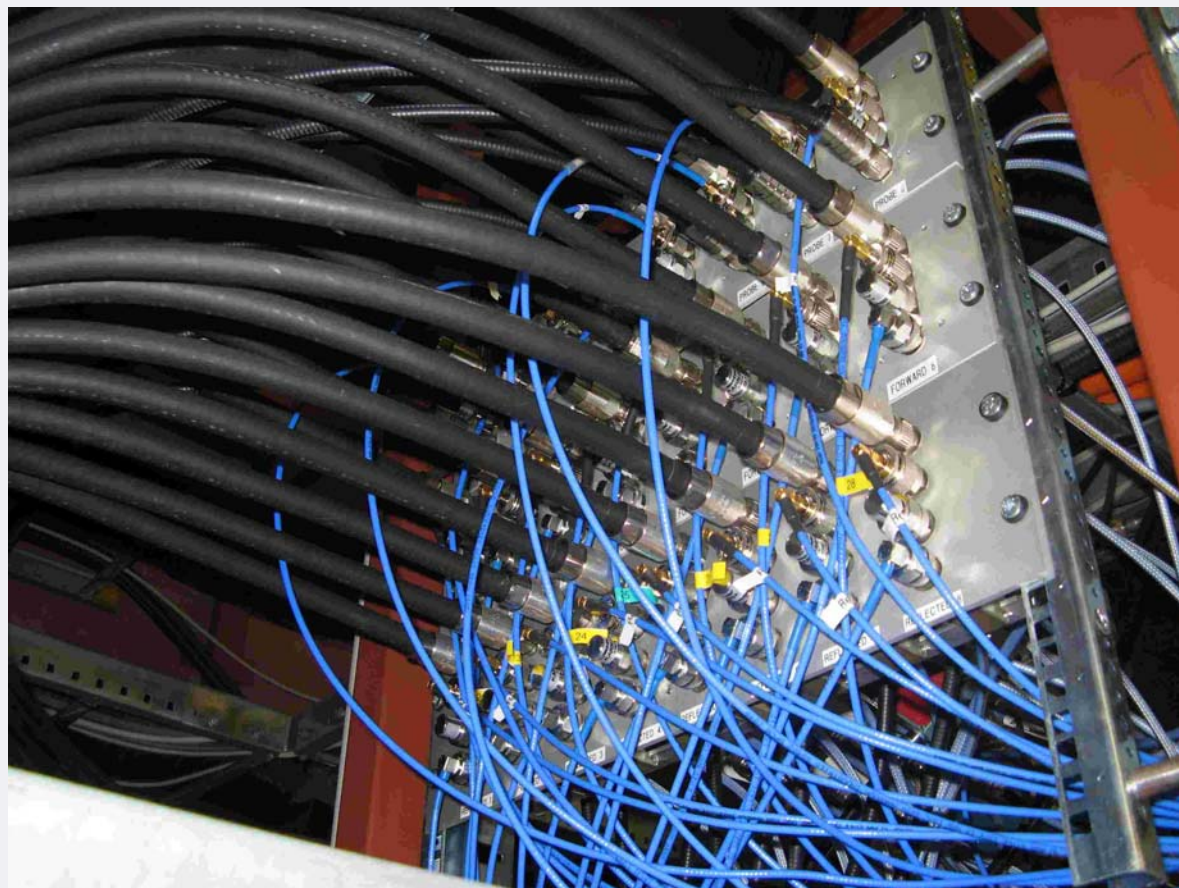
Electronic Racks

# Options for Installation (Ctn'd)

## ACC1



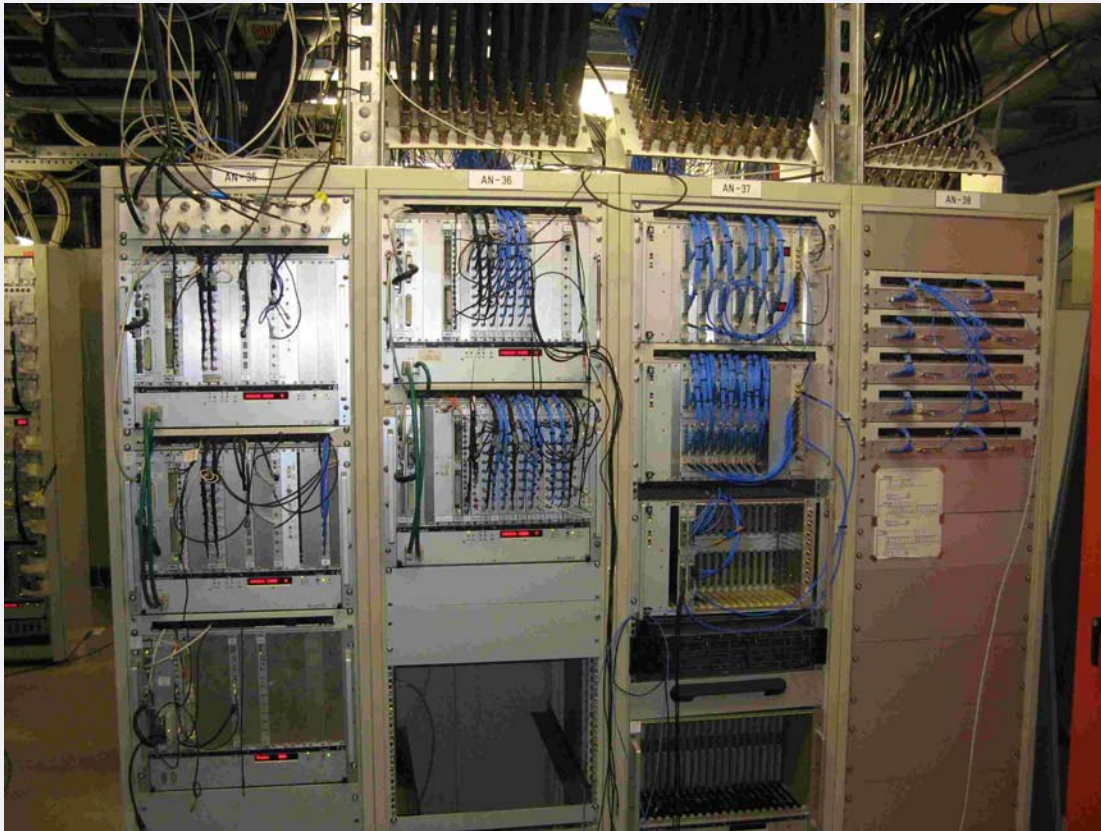
Racks



Cabling with signal splitters

# Options for Installation (Ctn'd)

ACC4,5,6

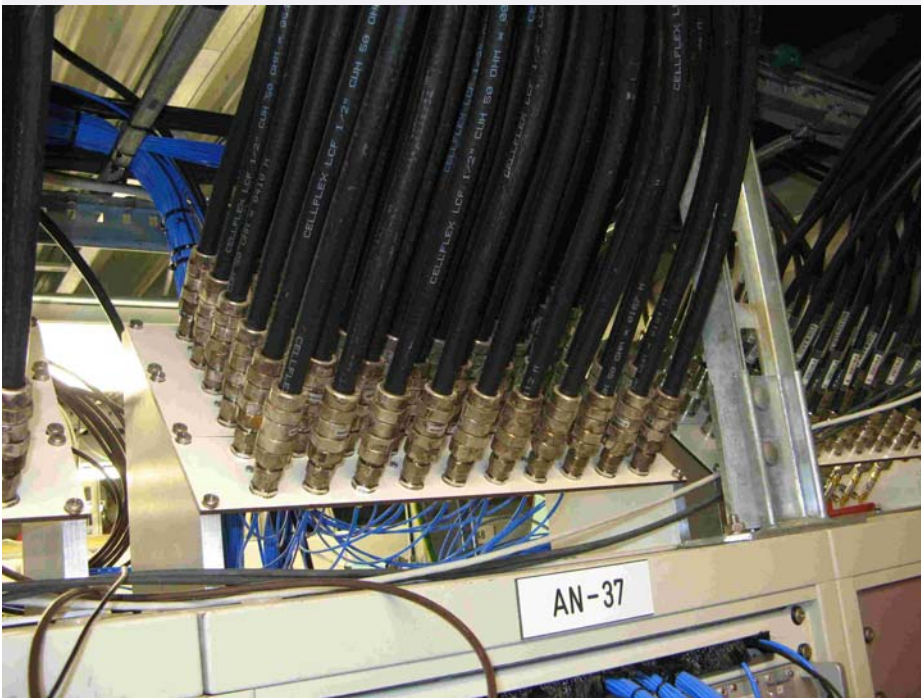


Racks with present installation



Space for ATCA crates

# Cabling (to and within racks)



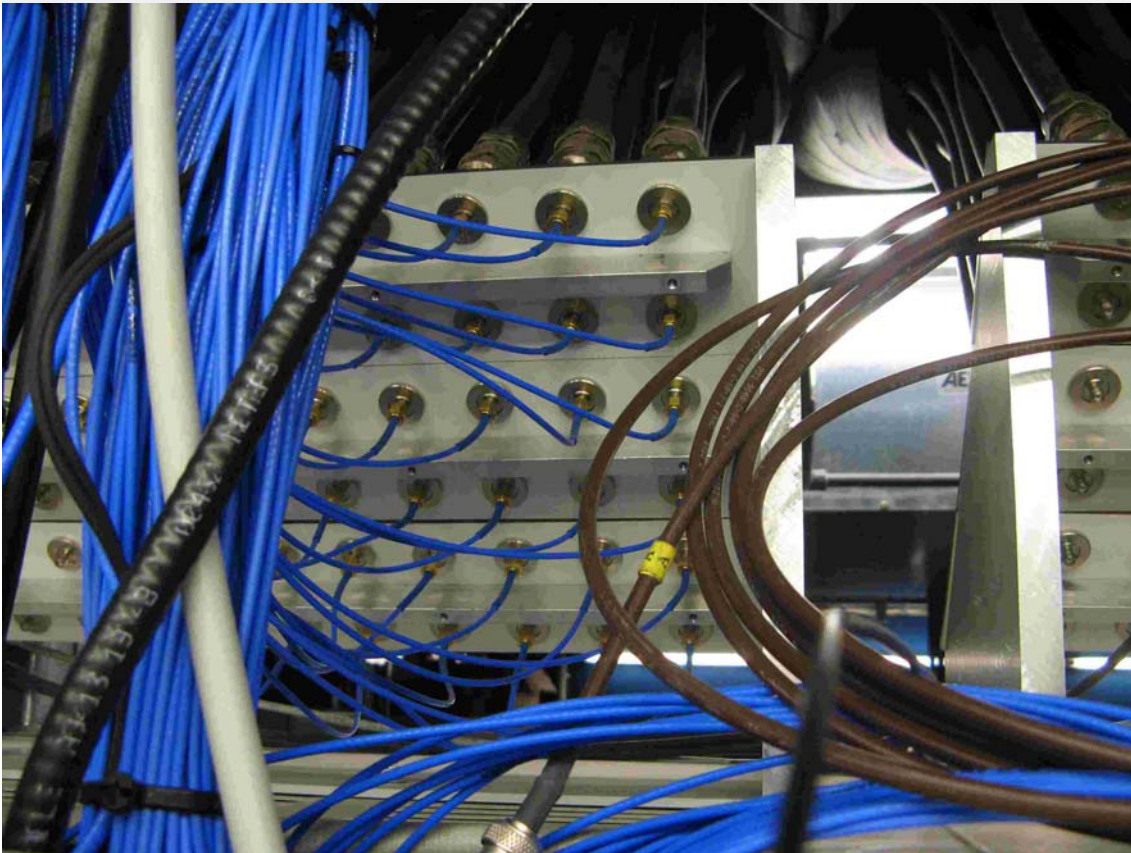
Patch panel ACC4,5



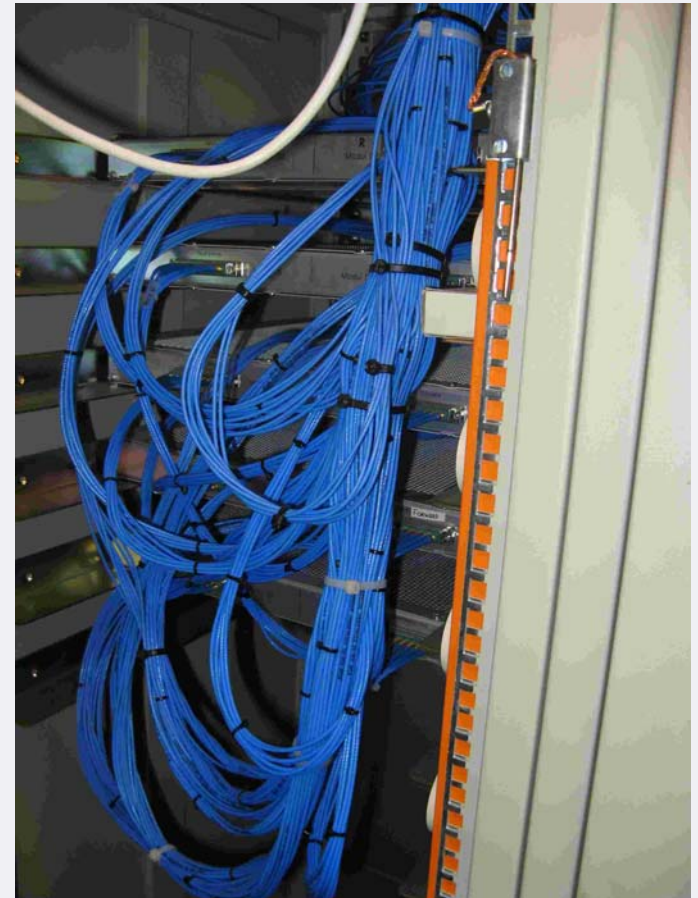
Power splitter ACC6



# ACC4,5,6 patch panel and inside rack



Patch Panel



Rear cables inside rack