

Hoffman *McLean* *Schroff*

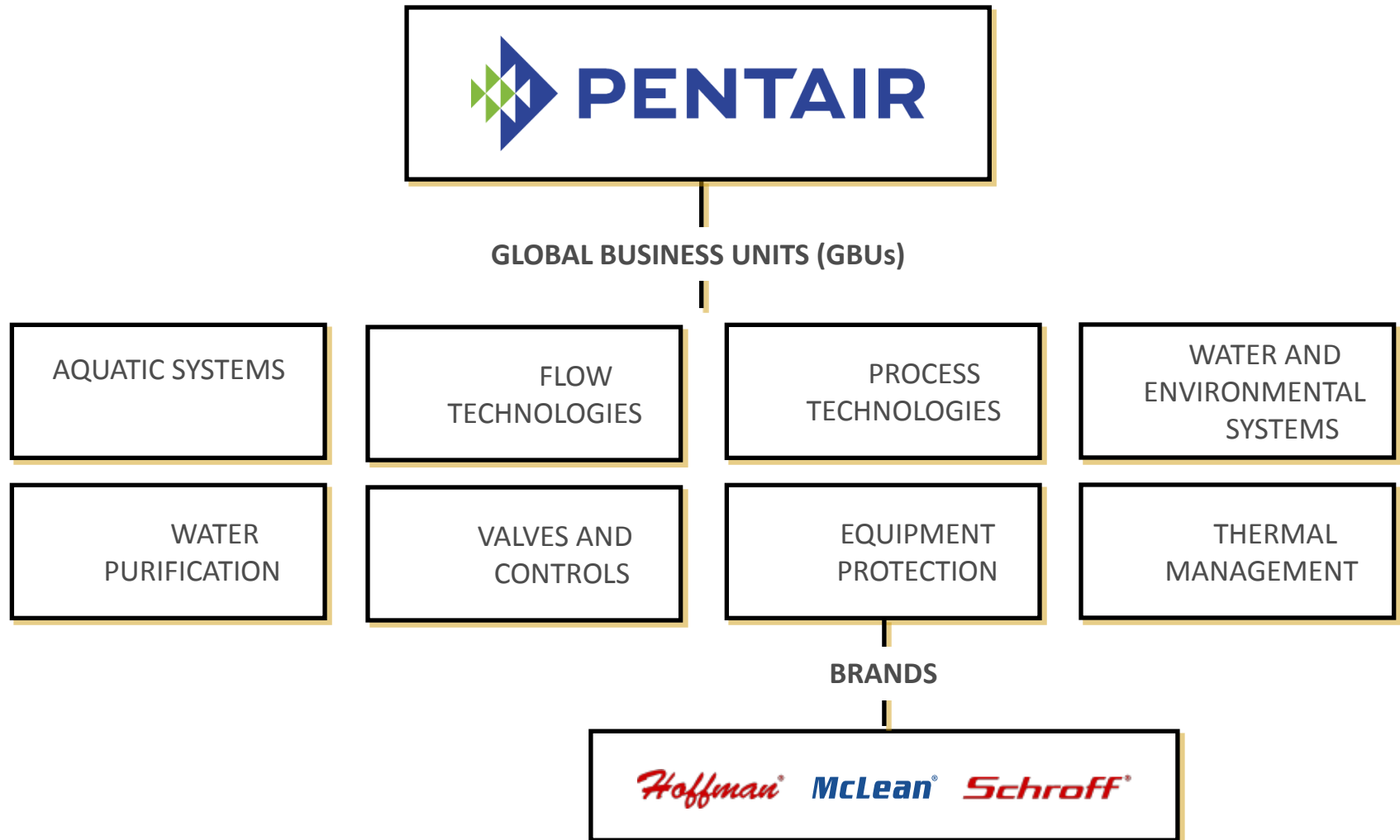
Schroff MTCA.4 Products

MTCA Workshop for Industry and Research
11-12th December, 2012
DESY, Hamburg

Dietmar Mann
Schroff GmbH
Dietmar.mann@pentair.com

DESIGN WITH CONFIDENCE™

Pentair - Equipment Protection - Brands



Schroff MTCA.4 Products

New MTCA.4 shelf with 7 AMC slots for laboratory and deployment use

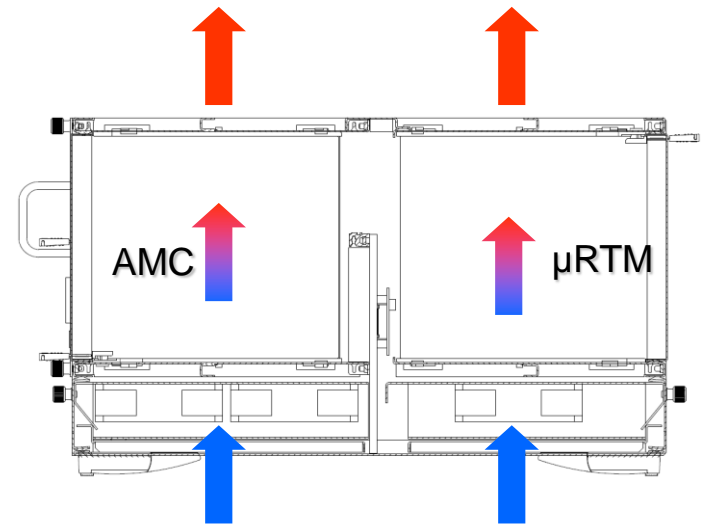
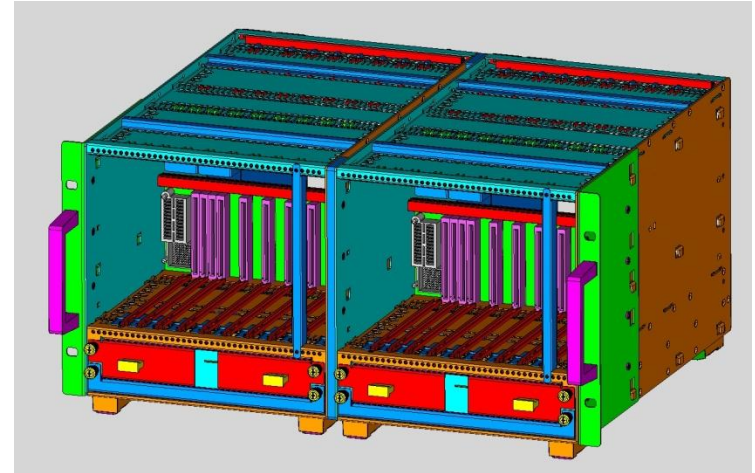
- **Front:**
 - 6 x AMC slots double-wide, mid-size
 - 1 x AMC slots double-wide, full-size
 - 1 x PM (Power Module) Slot
 - 1 x MCA slot
- **Rear:**
 - 6 x RTM slots double-wide, mid-size
 - 1 x RTM slots double-wide, mid-size
- **Hot Swappable CU (Cooling Unit)**
- **Removable Air filter**



Schroff MTCA.4 Products

New MTCA.4 shelf with 7 AMC slots for laboratory and deployment use

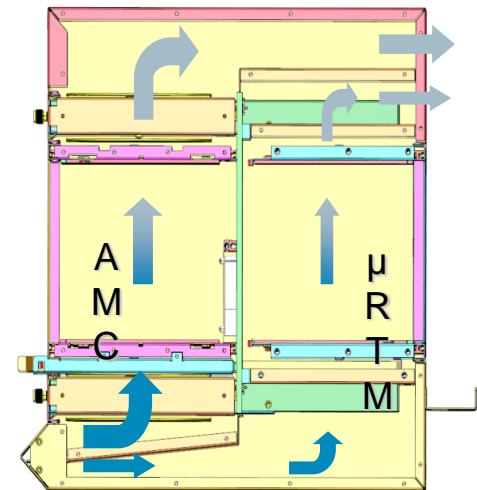
- Side-by-side mounting kit for 19"-Rack installation
- Air flow:
bottom intake, top exhaust



Schroff MTCA.4 Products

Deployment chassis for 12 AMC slots

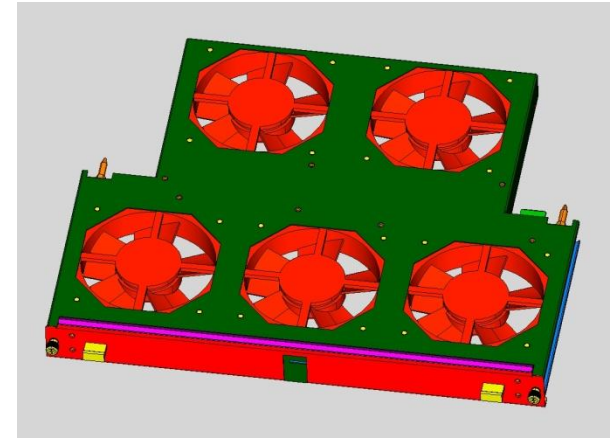
- **Front Module Slots:**
 - 12 x AMC slots double-wide, mid-size
 - 4 x PM (Power Module) Slot
 - 2 x MCA slot
- **Rear Module Slots:**
 - 12 x RTM slots double-wide, mid-size
- **19" wide x 9U high**
- **Push-Pull cooling with front removable fan trays**
- **Front removable Air filter**
- **Air flow front bottom air intake, to rear air exhaust**



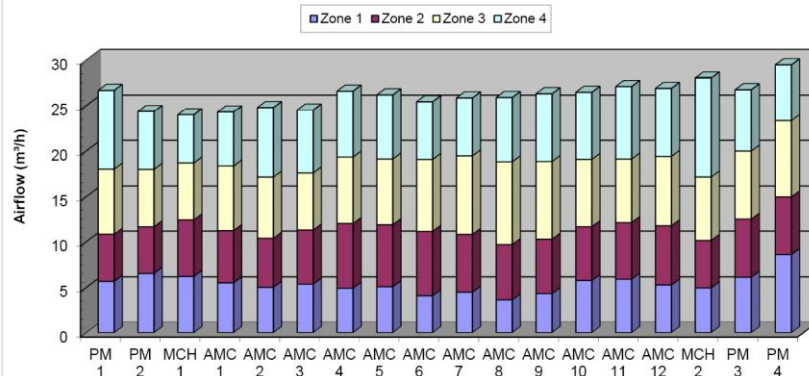
Schroff MTCA.4 Products

Deployment chassis for 12 AMC slots

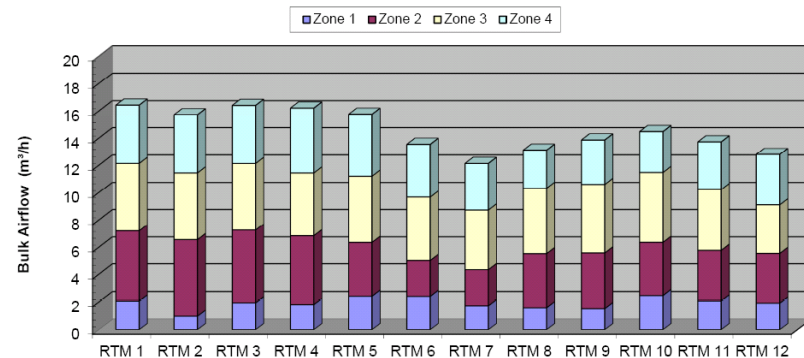
- Air flow measurements
- ~ 25 m³/h Front Air flow → > 80 Watts / AMC
- ~ 12 m³/h RTM Air flow → > 40 Watts / AMC



Air distribution, front Slots, normal operation



Air distribution, Rear board, normal operation



Schroff MTCA.4 Products

New 2U 6-Slot MTCA.4 Shelf

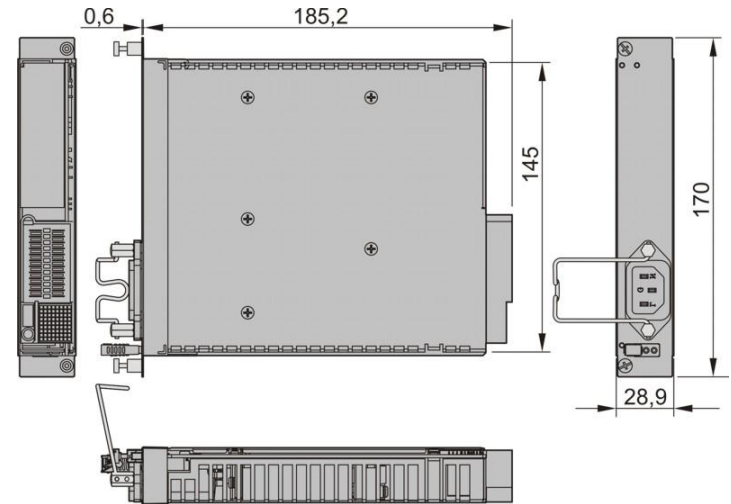
- **Front Module Slots:**
 - 6 x AMC slots double-wide, mid-size
 - 1 x MCA slot
- **Rear Module Slots:**
 - 6 x RTM slots double-wide, mid-size
 - 1 x PM slot
- **19" wide x 2U high**
- **Front removable CU (Cooling Unit) including air filter**
- **Air flow front air intake, to left air exhaust**
- **Customized solution for powerBridge computer**



Schroff MTCA.4 Products

MTCA.4 Power Module

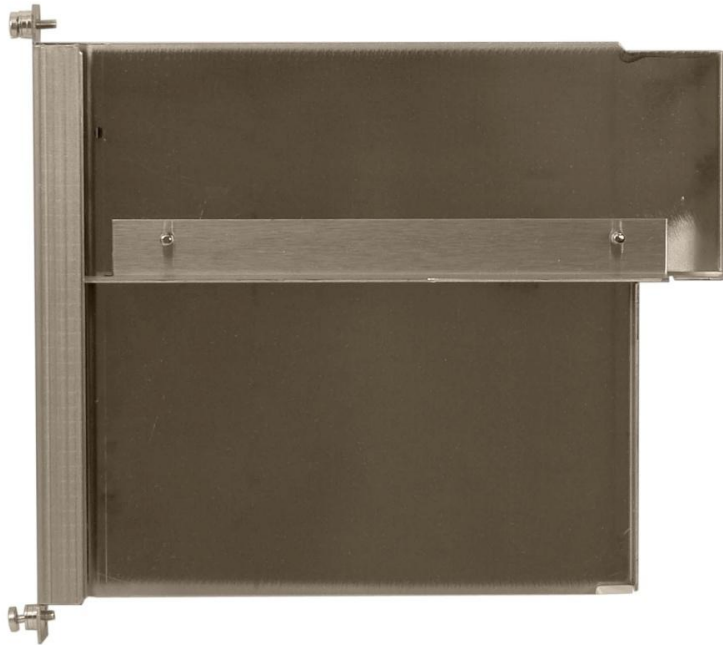
- Wide input voltage range 90 ... 264 VAC
- Active power factor correction
- Dimensions: double full-size
- MicroTCA power management in accordance with PICMG MTCA.0
- 16 output voltages 12 V and 16 x 3.3 V
- Corresponds to EMC class B as per EN 55022
- Mains input at front
- Available soon



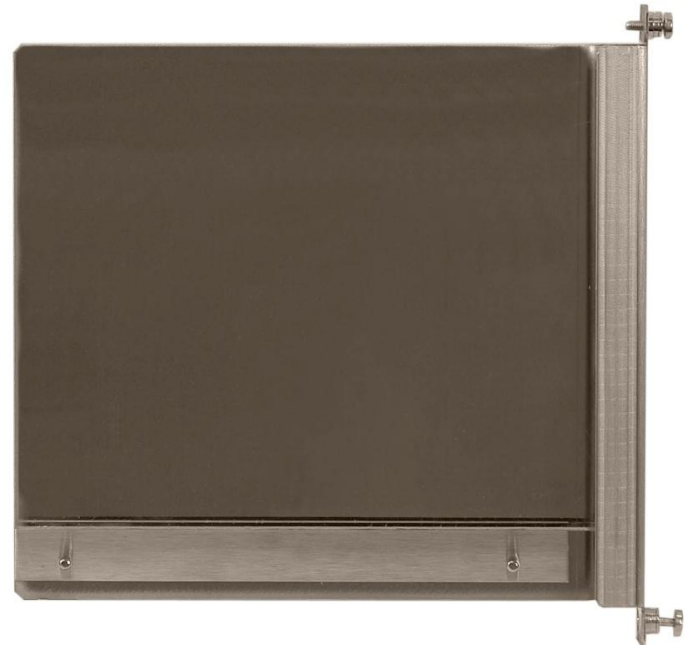
Schroff MTCA.4 Accessories

MTCA.4 Filler / Blocker Modules

Rear Module



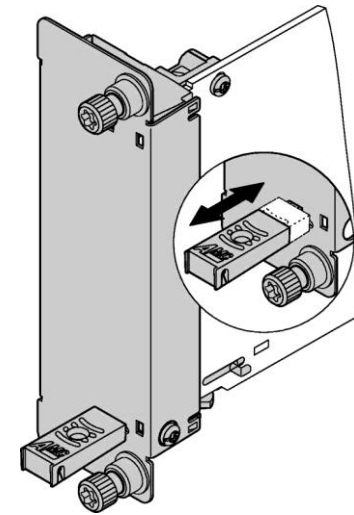
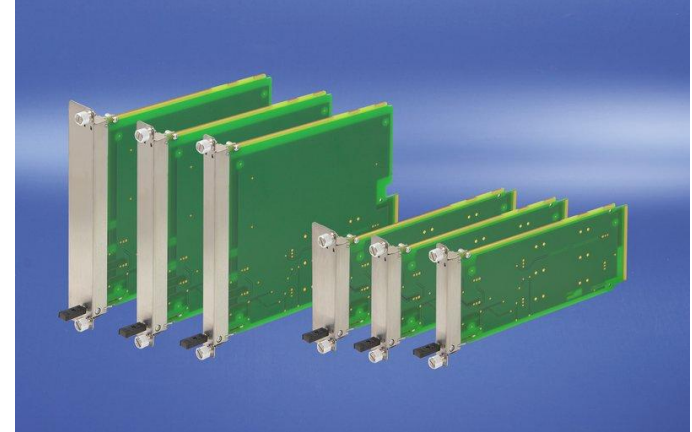
Front Module



Schroff MTCA.4 Accessories

Front panels and handles

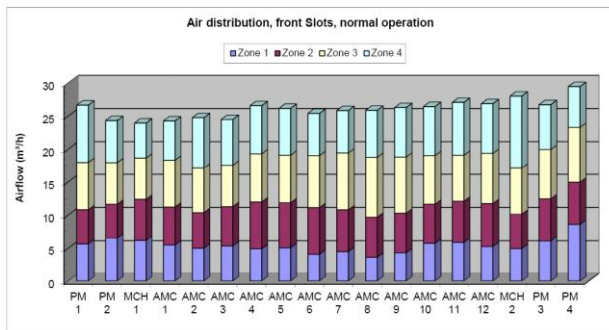
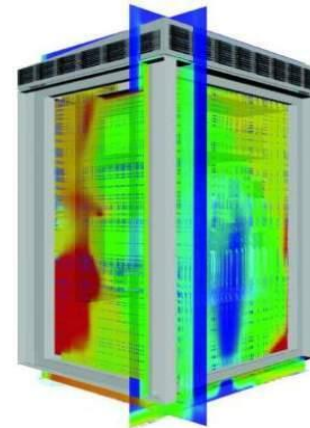
- **Complete kits:**
 - front panel
 - handles
 - light pipes
 - EMC gasket
- **All sizes:**
 - Single /Double
 - compact / mid / full size



Schroff MTCA.4

Simulation and Testing capabilities

- Thermal simulation
- Climate chamber
- Wind tunnel air flow measurements
- Air distribution measurements
- Acoustic noise measurements
- Backplane simulation and measurement
- EMI test



Thank you

Dietmar Mann

Schroff GmbH

dietmar.mann@pentair.com