

# NAF Status Report

Andreas Haupt, [Yves Kemp](#)  
NUC, 12.9.2012

# Tickets to NAF

- > Zeuthen Lustre not mounted in HH
  - User oversaw downtime announcement
- > Monitoring framework, usage for admin users
- > Reports of malfunctioning queues in batch system
  - Slow processing of jobs, qstat output errors...
  - Overload of the system: One user putting multiple 10k jobs in queue
  - No job got lost. Only processing of new jobs and status output was affected
- > Question about “-m a” option of qsub
  - Only sends email in case of SGE-specific error. Does not trigger errors in jobs script itself – needs to be handled by the job script.
- > AFS space requests
- > CERN.CH kerberos realm question
  - ... we did not really understand the reason behind the question
- > Job system configuration questions

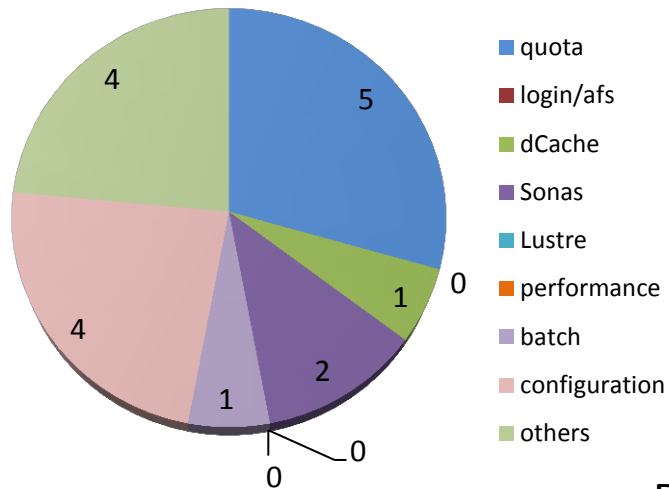


# [Naf-helpdesk@desy.de](mailto:Naf-helpdesk@desy.de) (Aug 1<sup>st</sup>- Aug 31<sup>st</sup> 2012)

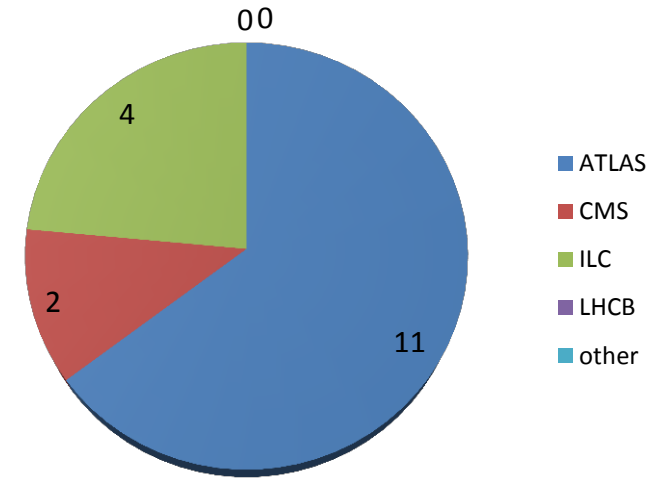
17 tickets in total

Mainly Sonas Quota requests

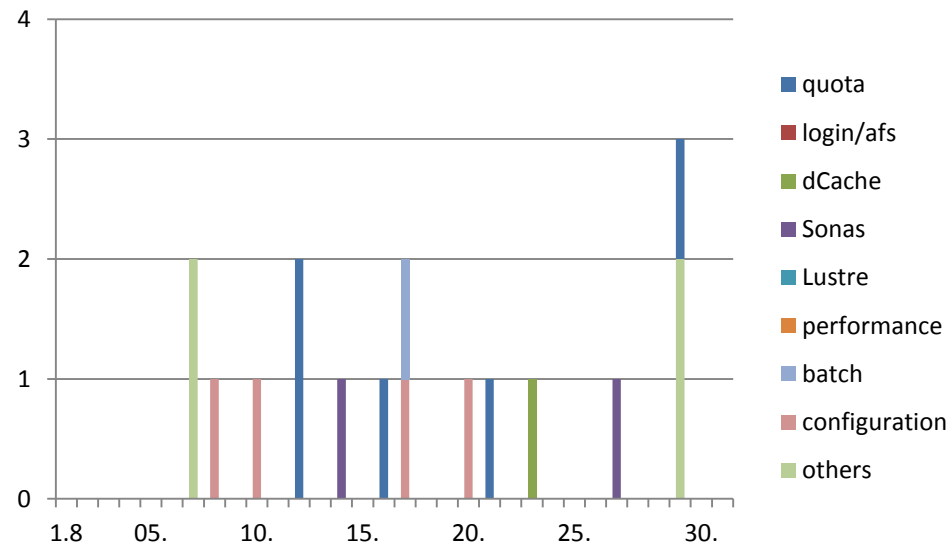
Category of Requests



Requests by Experiment



Date/Category of Requests

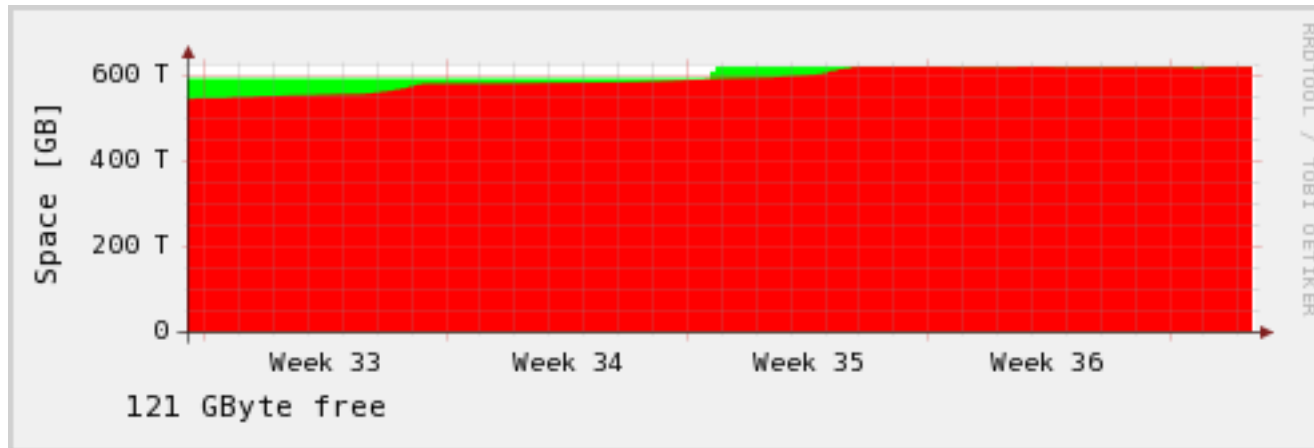


# Incidents and interventions

- > Understanding of the July power outage advances
  - Main reason for power not being reestablished in CC (probably) found
  - Responsible DESY group raised attention for CC and will change circuit logic
- > Storage server outage 7.9.2012 in DESY, affecting e.g. AFS desy.de
  - Could have had side affects on NAF jobs accessing DESY AFS
- > Parts of NAF Hamburg resources moved to new computing room
  - Make space for new hardware
- > 11.9.2012: Maintenance in Zeuthen
  - Remodeling networks – e.g. putting dCache behind the firewall into local network for better local data access performance
  - ATLAS & LHCb dCache software upgrade to version 1.9.12-21



# Storage situation localgroupdisk ATLAS@HH

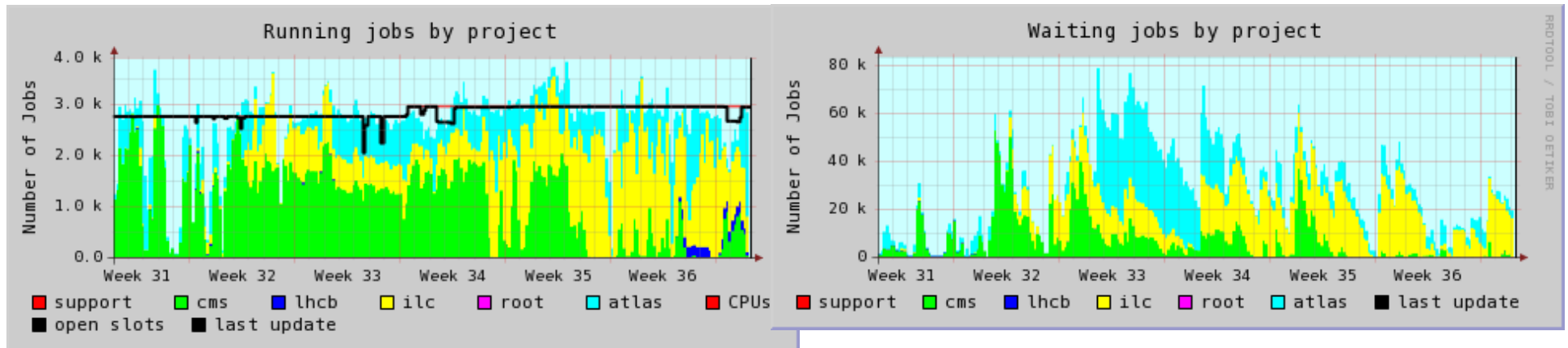


- > Tight since ~1 month, basically full since ~2 weeks
- > Seems that we are blacklisted. Isn't localgroupdisk "private" space?
- > What are the next steps?

# Batch usage since 1.8.2012

## > Multicore / Singlecore (Wall-D)

- ATLAS: 188 / 24541
- CMS: 0 / 47079
- ILC: 0 / 38644
- LHCB: 0 / 796



# Action items

id	who	description	status/comments
1007-2	NAF	report on help desk tickets	done
1010-4	NAF	statistics on multi-core/PROOF usage	done
1204-2	NAF&experiments	rethink queue setups for 15min queue, etc	ongoing
1208-1	NAF	update storage documentation for SONAS	To be done



# Sonas status, end-of-year purchases

## > HH: Lustre decommissioning plan

- Plan: Mount HH-Lustre RO on 1.11.2012. still six weeks away – how should we proceed?

## > New hardware plans for end of year

- Purchase Nx192 CPU cores in HH. N=3 or N=4 ... depending on money
- Sonas enlargement: Still needs some discussion with IBM – end of the month





# NAF 2.0 plans

- End of August, meeting of NAF providers on NAF evolution concepts and plans
  - Consensus to move into direction presented in past NUC meetings
  - A detailed plan is currently being written, to be shown to NUC representatives and German experiments groups via the Alliance Grid Board within next days
- Tentative plan for testing prototype:
  - Beginning October: First WGS + Batch + (some) Sonas/Lustre for selected people that now have DESY account
  - Beginning November: Adding “remote desktop” with NX-like tools, same users
  - Beginning December: Possibility for some selected DESY-external users to access test infrastructure
  - Further timescale will be decided based on these test results
  - As only very few resources will be migrated to NAF 2.0 in this phase (no batch resources), focus should be on functionality rather than bulk job submission performance
  - **Volunteers?**



# Alliance Workshop 3-5.12.2012 in Hamburg

- > We see the need for a NAF users meeting
  - Have already spoken with organizers
  - Ideally no time overlap with physics meetings to reach large number of users
  - Main topic from our side certainly NAF 2.0
- > Of course, NAF users meeting should be organized together with NUC

