

Naf User Committee

October 2012.

Report from Operation

Andreas Haupt, Yves Kemp, Kai Leffhalm

On behalf of the NAF Operators for the NUC
October 10, 2012

Queue Stats

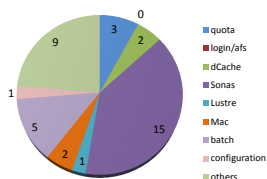
Group	pe	wallclock hours	% usage
ATLAS	NONE	474728.6	24.7
	multicore	2.5	
	proof	2420.5	
CMS	NONE	616168.9	32.0
lhcb	NONE	34997.8	1.8
ILC	NONE	796932.0	41.4
TOTAL	NONE	1922827.4	100
	proof	2420.5	
	multicore	2.5	



Stats from helpdesk - Thanks to B. Kahle

Naf-helpdesk@desy.de (Sep 1st- Sep 30th 2012)

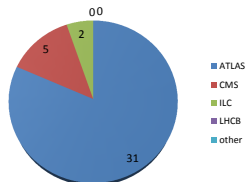
Category of Requests



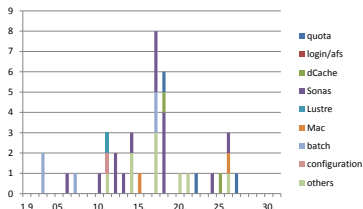
38 tickets in total

Mainly Sonas quota requests, some dCache issues

Requests by Experiment



Date/Category of Requests



Benjamin Kahle – NAF-helpdesk



Tickets

Batch: 3

- > Many jobs submitted with qstat: 1
- > One user process got 100%: 1
- > Question for explanation of "Quota": 1

Access: 3

- > autoproxy: 1
- > NAF-Token ubuntu 12: 1
- > Move account: 1

Hardware: 2

- > DIMM: 1
- > ILO: 1



Storage: 17

- > Sonas quota: 9
- > Sonas Directory: 3
- > Lustre mounts: 1
- > Lustre Directory: 1
- > afs dir not accessible: 1
- > compile on sonas, inodes: 1
- > afs recoveru of data: 1

Other: 4

- > Node down: 1
- > Reboot: 2
- > WGS new installed: 1



Action Items

NAF

- > Monthly reports
- > Update sonas documentation

Experiments

- > Rethink 15 min queues



Naf 2.0

- > First HH WGS are installed and user access granted to some expert users
- > Remote desktop is tested by operators
- > Feedback is welcome

Downtime

- > RZ4 in HH has a shutdown Oct. 23rd in the morning
- > Resources are reduced as some WN are in that room
- > draining starts two days before

