

# NAF User Committee

## January 2013.

### NAF Operations Status Report

Yves Kemp, Andreas Haupt

On behalf of the NAF Operators

January 9, 2013

## Zeuthen part of Atlas NAF-2.0 ready

- > Due to Atlas' wish to concentrate on HH-site, probably just for "local" usage (Zeuthen, Humboldt University)
- > LHCb status unfortunately still unclear

## RHEL 5.9 released

- > SL 5.9 will probably be released during the next weeks
- > Impact on NAF-1.0 unclear - maybe it's not worth the work



# Action Items

1210-2 : offer better monitoring for queue usage

> got no news

1210-3 : reconsider queue setup, scheduling, dynamic or configurable queue limits

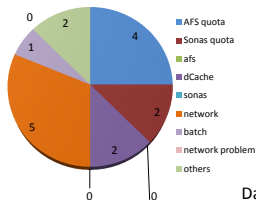
> got no news



# Stats from help desk - Thanks to B. Kahle

[Naf-helpdesk@desy.de](mailto:Naf-helpdesk@desy.de) (Dec 1<sup>st</sup>- Dec 31<sup>st</sup> 2012)

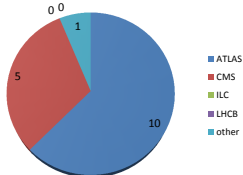
Category of Requests



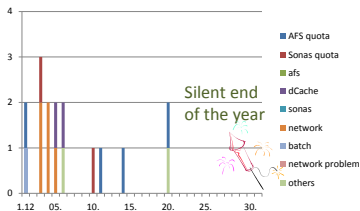
16 tickets in total

Some network problems between Hamburg and Zeuthen

Requests by Experiment



Date/Category of Requests



Silent end of the year

Benjamin Kahle – NAF-helpdesk

