

NAF User Committee

April 2013.

NAF Operations Status Report

Yves Kemp, Kai Leffhalm, Andreas Haupt

On behalf of the NAF Operators

April 10, 2013

Downtime wrap-up

- > downtime on 12th March went through successfully
- > new SL5 kernel with security fix released just after end of downtime - WGS had to be rebooted again

Lustre migration in HH

- > Lustre "end of life" in HH on 1st October
- > Lustre filesystems will be mounted read-only on 1st August
- > Users have to migrate their important data to Sonas on their own
- > Further details spread via mail to naf-announce



Problems during last month

/tmp full

- > /tmp on WN ran full once again due to misbehaving jobs of a user

Batch system blackout

- > A bug in SGE caused a full NAF batch system blackout - WN daemons segfaulted
- > Problem was persistent - restart / reboot did not help
- > SGE's spool area on WN had to be removed to get it up running again



Registry

- > Interface for external users almost ready - PiP connector still missing
- > Namespaces ready for ATLAS, CMS, ILC, LHCb, BELLE
- > Some users did some initial tests
- > NAF 2.0 is ready for power users and users with existing DESY account!



... cont.

- > WGS ready for ATLAS, CMS, ILC, BELLE, Herafitter
- > BIRD (batch resources) with 1400 SL5-cores & 356 SL6-cores ready - often with free resources!
- > AFS scratch space can in /afs/desy.de can be provided, details still need to be discussed, though
- > "NAF remote desktop" (nafhh-x1 & nafhh-x2) with Ubuntu/SL6 available for some time - is there some feedback?



request to mount `sft.cern.ch`

- > Problematic in NAF-1.0 due to CVMFS 2.0 shortcomings and limited disk space on nodes
- > CVMFS 2.1 not really production ready
- > NAF-2.0 with CVMFS over NFS, but this feature also still has bugs



Tickets

Storage: 18

- > Sonas account : 3
- > Sonas quota: 7
- > AFS problem: 3
- > Slow performance: 3
- > Mount cvmfs repository: 1
- > lustre: 1

Maintenance: 1

- > WSG unavailable: 1

Access: 2

- > Account: 1
- > Bird: 1

Documentation/Announcements: 2

- > Bad information mails: 1
- > Monitoring system: 1

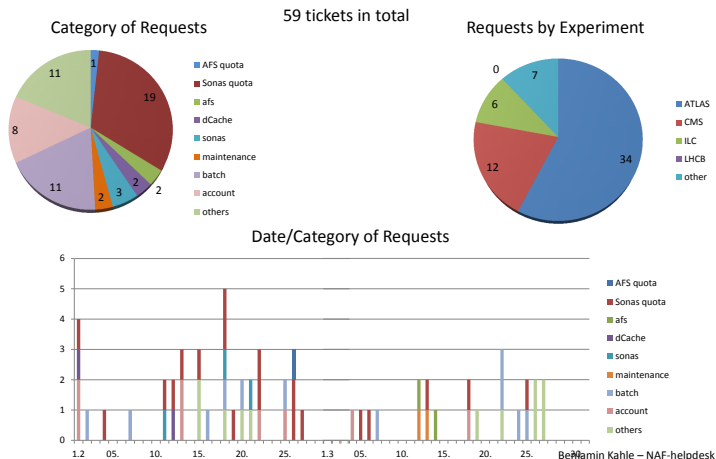
Other: 4

- > /tmp full: 1
- > Hardware error: 1
- > Missing packages on BIRD: 1
- > ini for CMS NAF 2.0: 1



Stats from helpdesk - Thanks to B. Kahle

Naf-helpdesk@desy.de (Feb 1st- Mar 31st 2013)



Benjamin Kahle - NAF-helpdesk



Action Items - NAF 2.0

Offer better monitoring

- > A primitive monitoring is available at <http://www.desy.de/~kemp/birdwatch/day.html>
- > BUT: it is work in progress, tests with SPLUNK are currently done

Reconsider queue setup

- > Should probably be more precise ...

