

NAF User Committee

June 2013.

NAF Operations Status Report

Yves Kemp, Kai Leffhalm, Andreas Haupt

On behalf of the NAF Operators

June 12, 2013

Hardware changes

- > One blade enclosure will be moved to NAF-2 as ILC will completely switch to NAF-2 on 17th June. Who's next?
- > Two blade enclosures will be moved into another computing room

Downtime in Zeuthen in early August

- > Zeuthen computing centre will be completely switched off on the weekend 2.8. - 5.8.
- > We want to upgrade the Zeuthen Atlas dCache to version 2.2 BEFORE that date - any date appreciated?



Status NAF 2.0

Registry

- > Registry interface for external users is ready to use
- > Tests succeeded for BELLE & ILC users
- > Documented at: https://it.desy.de/services/computing_infrastructure/national_analysis_facility___naf/

AFS scratch space

- > Different naming (XXL) but identical use case. Old naming can be achieved by creating symlinks.
- > Available on request

Mailing lists for users

Please provide input how mailing lists for user information & discussion should be set up!

Status "ini" for NAF 2.0

available:

- > dctools
- > ganga (but older version only)
- > grid/glite
- > python26
- > crab
- > neurobayes
- > cmssw & cmssw_cvmfs

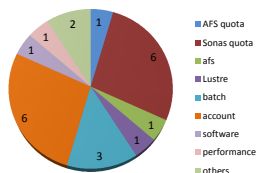
still unavailable:

- > autoproxy (service does not exist in NAF-2, yet)
- > py26root53405 (needs to be done)
- > python (usage unclear)

Stats from helpdesk - Thanks to B. Kahle

Naf-helpdesk@desy.de (May 1st- May 31st 2013)

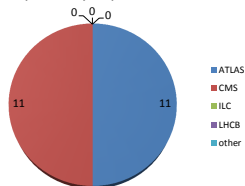
Category of Requests



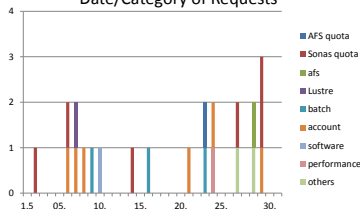
22 tickets in total

Some new account creation requests.

Requests by Experiment



Date/Category of Requests



Benjamin Kahle – NAF-helpdesk



Action Items - NAF 2.0

1302-1

> First information provided at

https://it.desy.de/services/computing_infrastructure/national_analysis_facility___naf/

1302-2

> Still missing ...

