

# NAF User Committee

## August 2013.

### NAF Operations Status Report

Yves Kemp, Kai Leffhalm, Andreas Haupt

On behalf of the NAF Operators

August 14, 2013

## Atlas Lustre mounted readonly

- > Happened on 1st August

## Zeuthen Atlas dCache still unstable

- > Two different problems!
- > SRM database becomes very slow after some time - another change in the PostgreSQL settings looks promising now.
- > A bug in the EMI SL6 dcap client is supposed to cause a "Denial of Service" on the dCache head node under some circumstances - a workaround is in place (usage of an older client version) but unclear whether this helps.



## CMS dCache downtime

- > Should take place on Wed, 28th August, 10:00 - 19:00
- > Will be announced to all relevant mailing lists when the date is fixed.



# Setting quota on SONAS

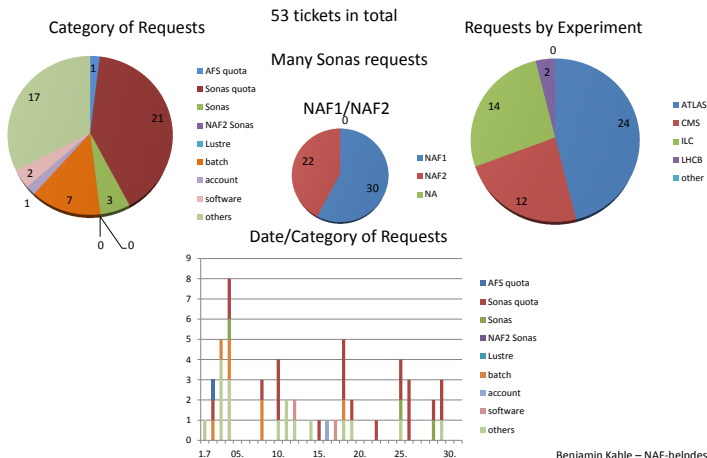
## Official task of NAF VO support

- > ... but do all users know that?
- > Do VO admins know about that?
- > Shall UCO care in case of "emergency"?



# Stats from helpdesk - Thanks to B. Kahle

[Naf-helpdesk@desy.de](mailto:Naf-helpdesk@desy.de) (Jul 1<sup>st</sup>- Jul 31<sup>st</sup> 2013)



# Action Items

It is holiday time ...

> No updates ...

