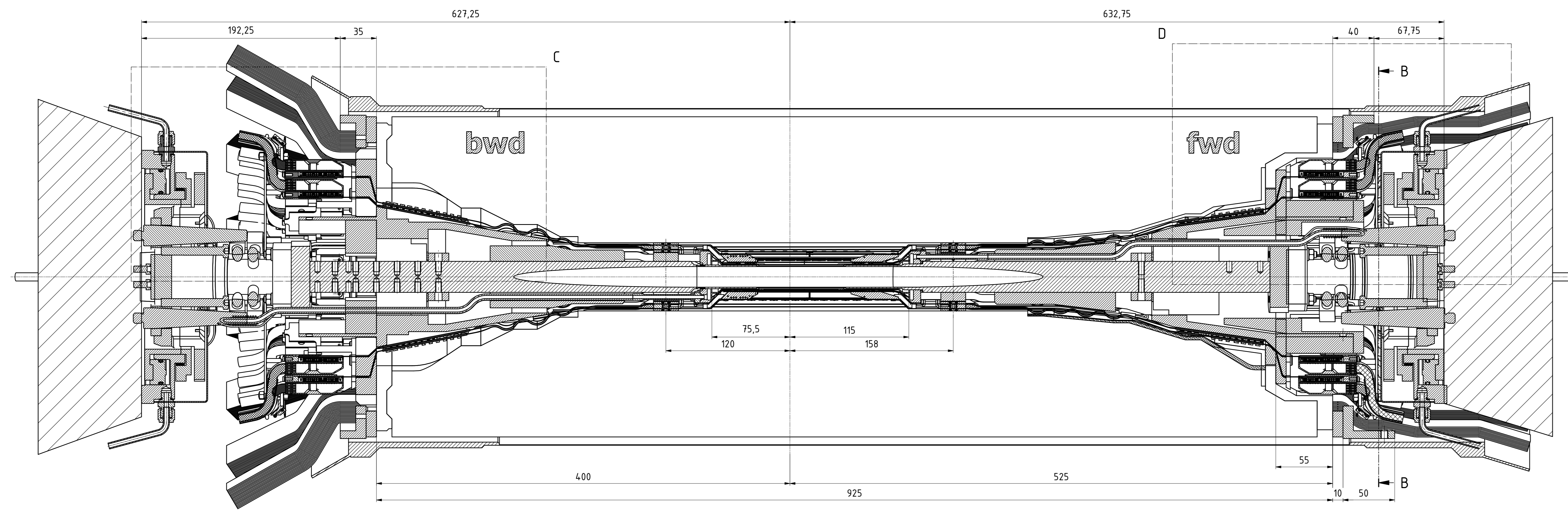
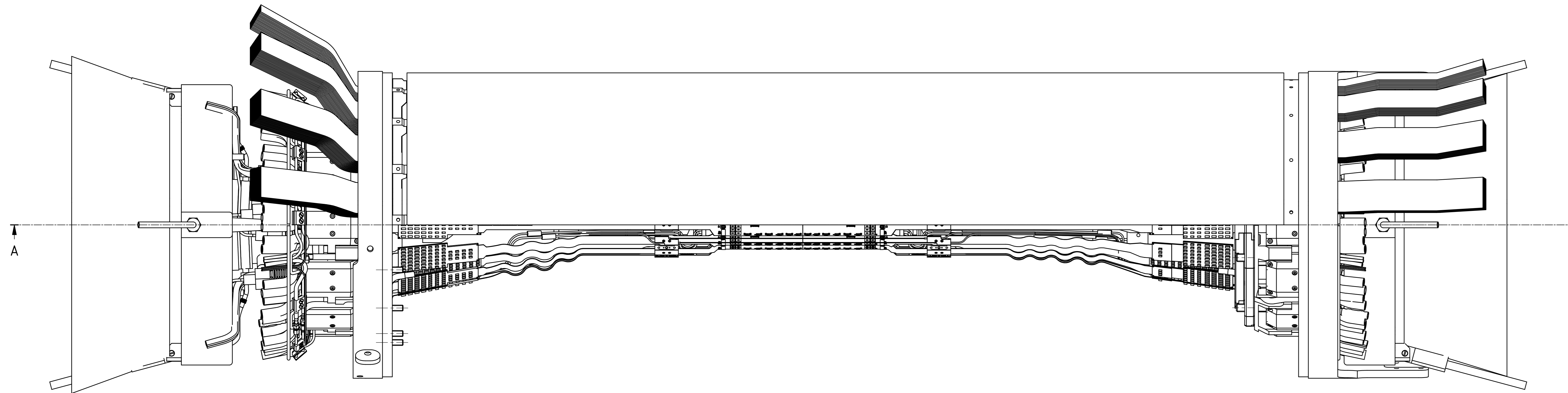
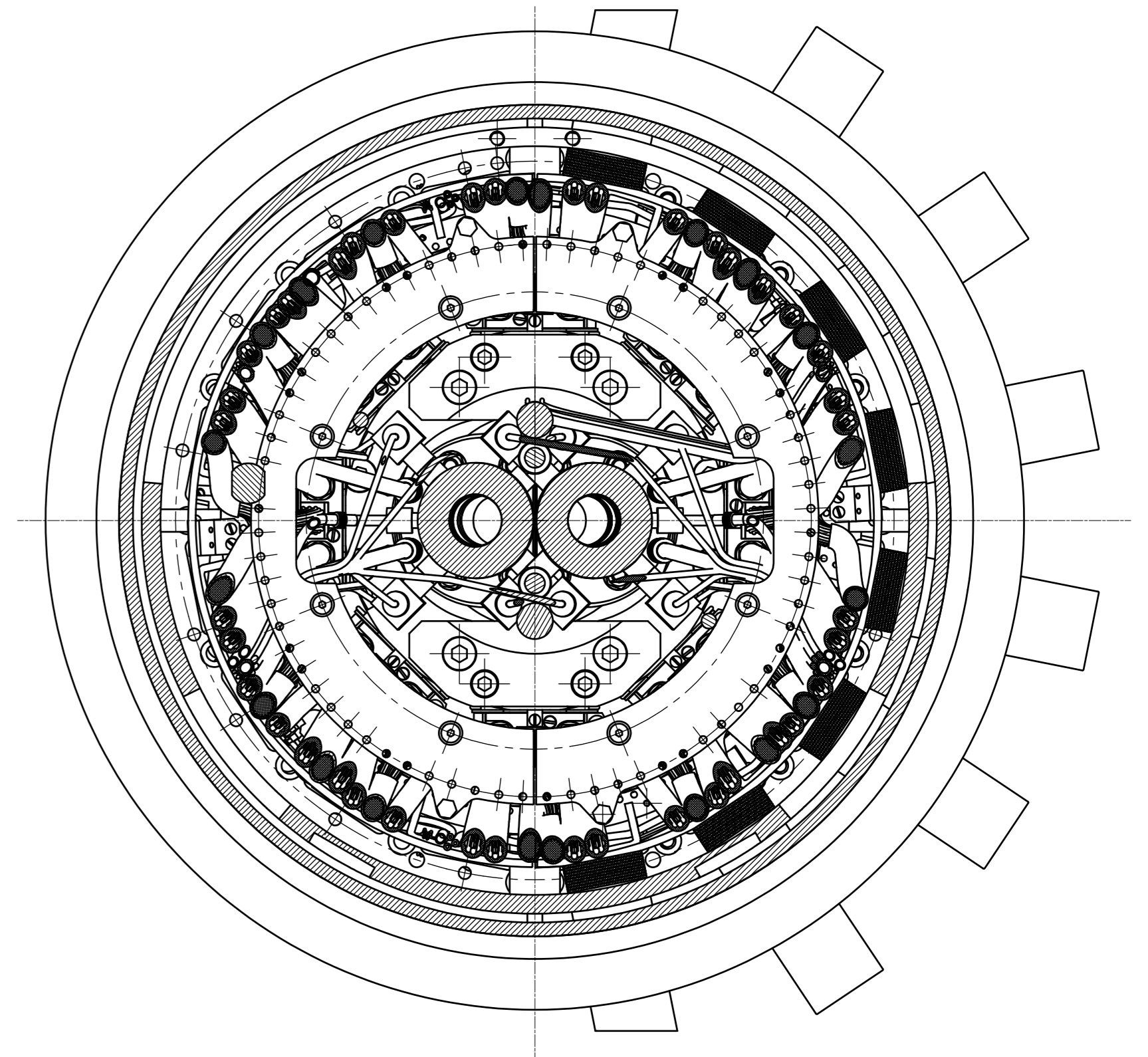


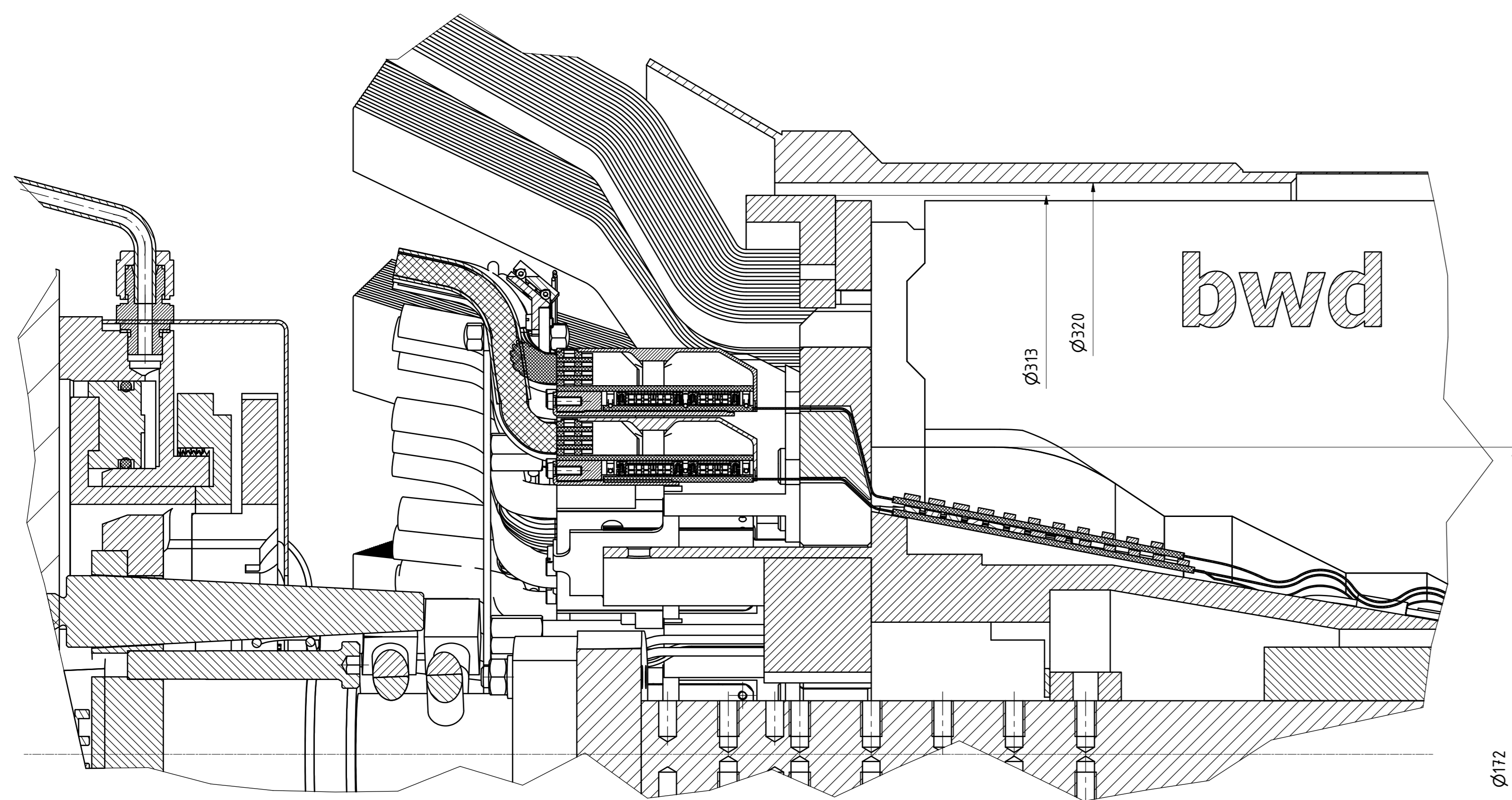
A-A (1:2)



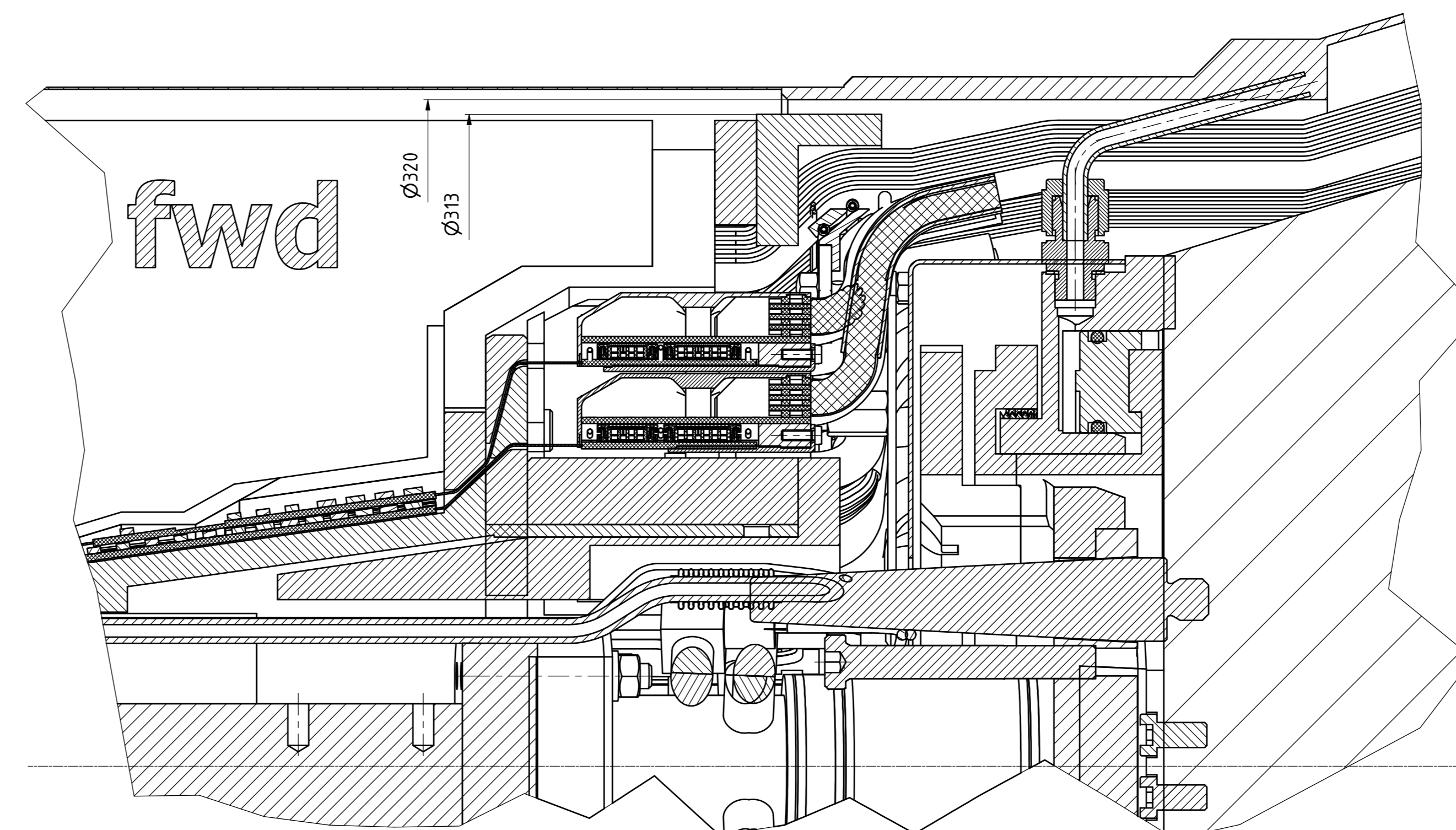
B-B (1:2)



C (1:1)



D (1:1)



Notes on latest changes

- Both sides RVC
- SVD bwd with 172 mm flange on the inside.
- Heavy metal outer flange is not divided on fwd.
- CFRP cone on fwd with old geometry

		Max-Planck-Institut für Physik (Werner-Heisenberg-Kammer) München		Gewicht: ... mm Dimensionen: ... mm Maßstab: ... nach DIN 618
Tag: 13.10.2013 gezeichnet: K. Aiskermann gezeichnet: K. Aiskermann	Name: K. Aiskermann Projekt: KEK-Beam pipe HeavyMetal with kapton cuts	Werkstoff:		Zeichnungsnummer / EDW Nr.: 106-021200-850.idw Blatt: 1 / Gesamtzahl: 2 V1/13 (04.09.2013 - 04.09.2013)
Multistab: 1:2		Sketch HM proposal for PXD-Kaptons (Okt. 2013)		Teil: